

RIGHT POLARIZING BACKPLANE MODULE
ASSEMBLY PART NUMBER ASSIGNMENT

325 - X 0 X X - X X X

LOAD
4 = STANDARD LOAD
7 = CUSTOM LOAD, LEADED
8 = CUSTOM LOAD, LEAD FREE
L = CUSTOM LOAD, LEADED, ADVANCED PLATING
N = CUSTOM LOAD, LEAD FREE, ADVANCED PLATING

MINIMUM PIN WIPE LENGTH, SEE DETAIL U
3 = 1.00 mm WIPE
4 = 2.00 mm WIPE
5 = 3.00 mm WIPE

PLATING CODE
0 = 735 4=804
1 = 732 5=803
2 = 769 6=806
3 = 768 7=805

NUMBER OF COLUMNS
05 = 5 COLUMN MODULE
10 = 10 COLUMN MODULE
20 = 20 COLUMN MODULE
25 = 25 COLUMN MODULE

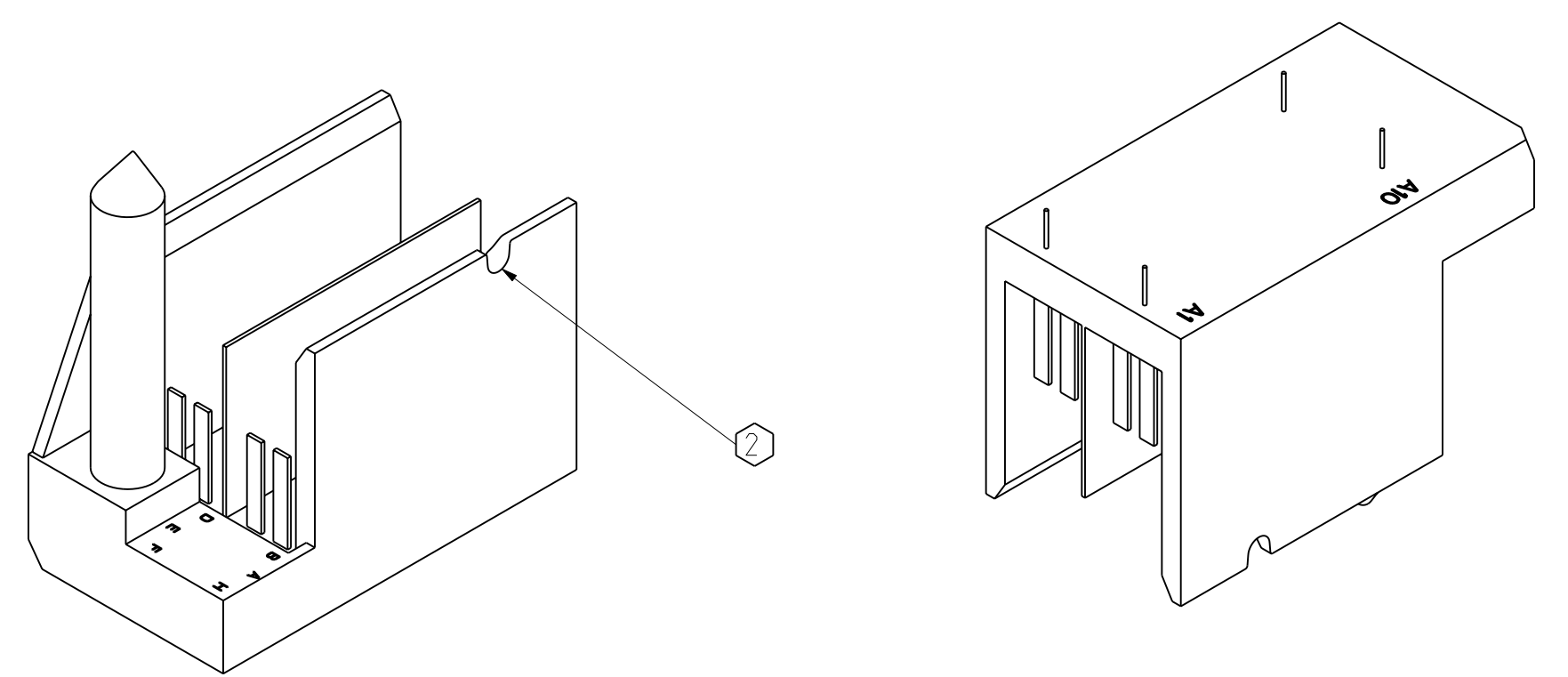
POLARIZATION - SEE TABLE 2

TABLE 1

ASSEMBLY PART NUMBER	K	(L)	P	TOTAL NUMBER OF DIFFERENTIAL PAIRS
325-X005-XXX	4	(7.40)	15.53	10
325-X010-XXX	9	(16.65)	24.78	20
325-X020-XXX	19	(35.15)	43.28	40
325-X025-XXX	24	(44.40)	52.53	50

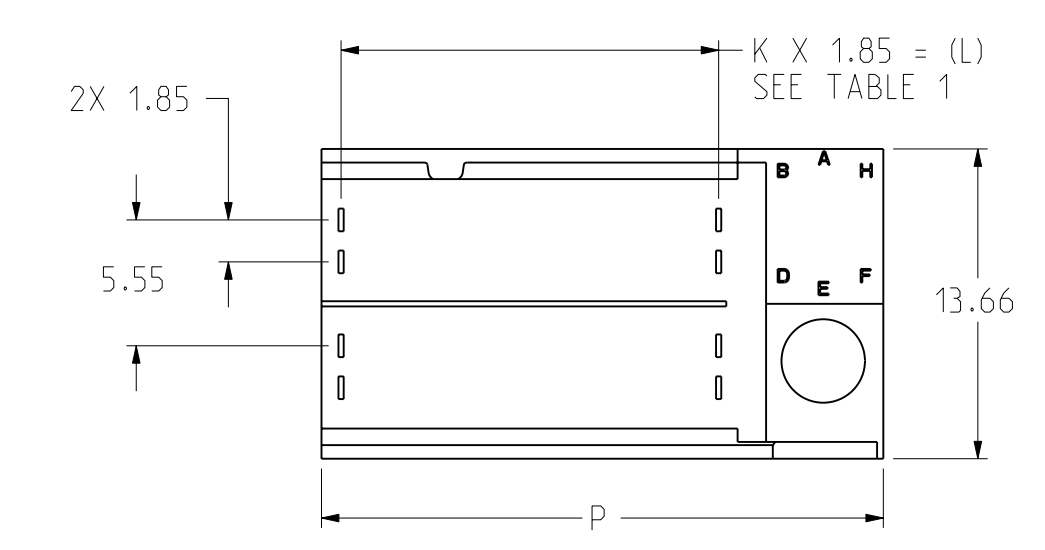
TABLE 2

PART NUMBER 325-X0XX-(XXX)	-0XX	-AXX	-BXX	-CXX	-DXX	-EXX	-FXX	-GXX	-HXX
POLARIZING PIN ORIENTATION									

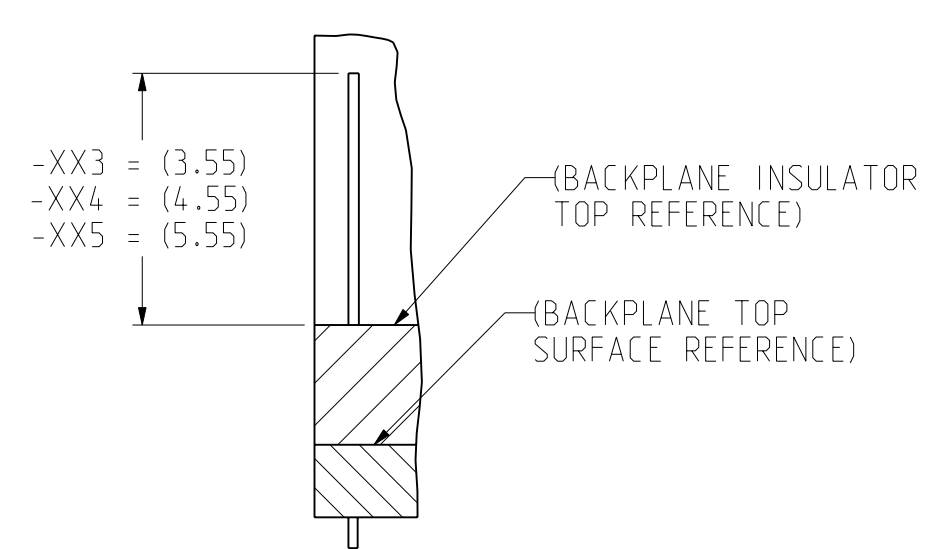


ISO VIEW SCALE 3/1

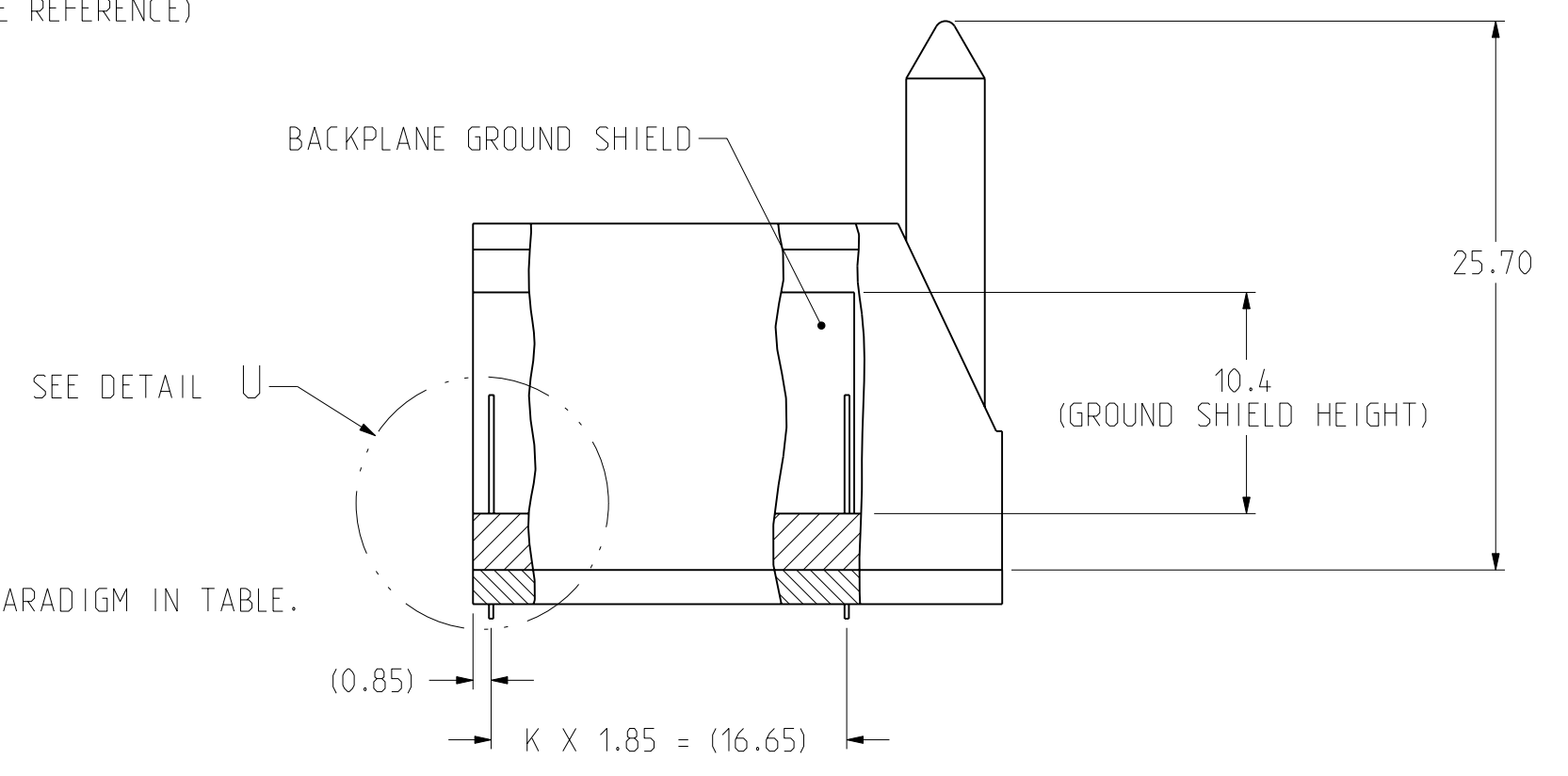
ISO VIEW BOTTOM SCALE 3/1



TOP VIEW SHROUD SHOWN ONLY SCALE 3/1



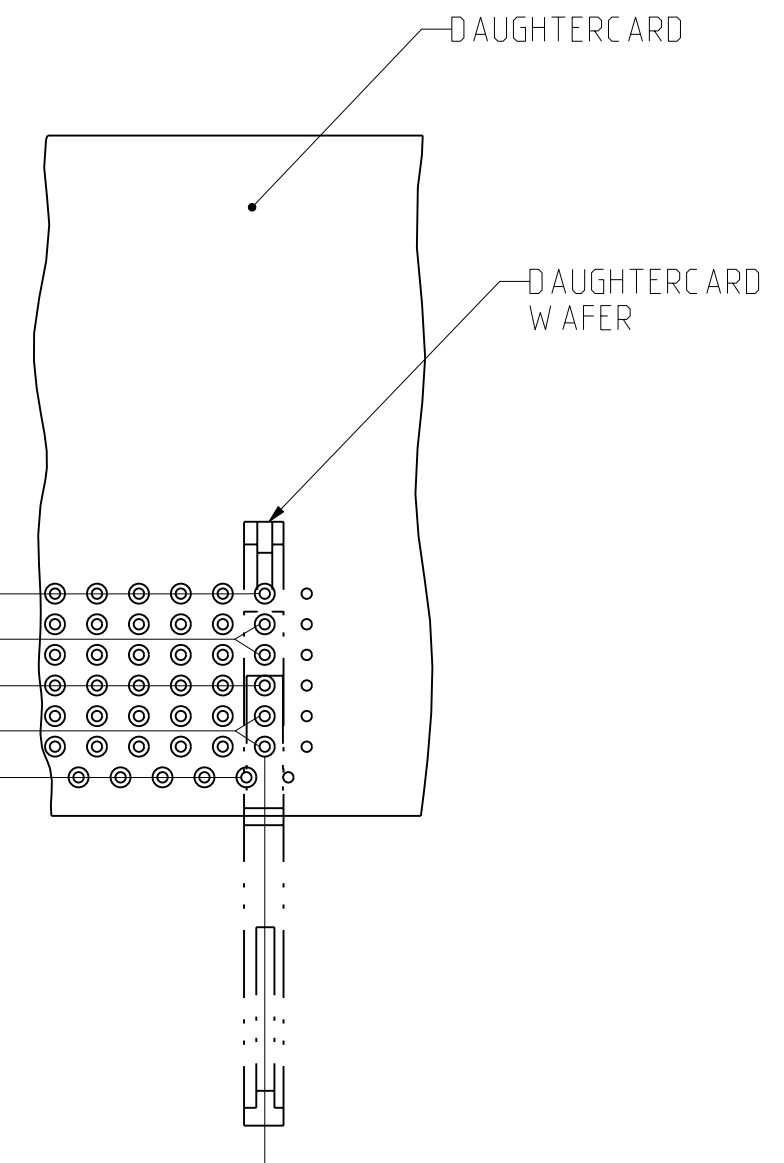
DETAIL U SCALE 6/1



BACKPLANE GROUND SHIELD

BACKPLANE SIGNAL PIN

BACKPLANE

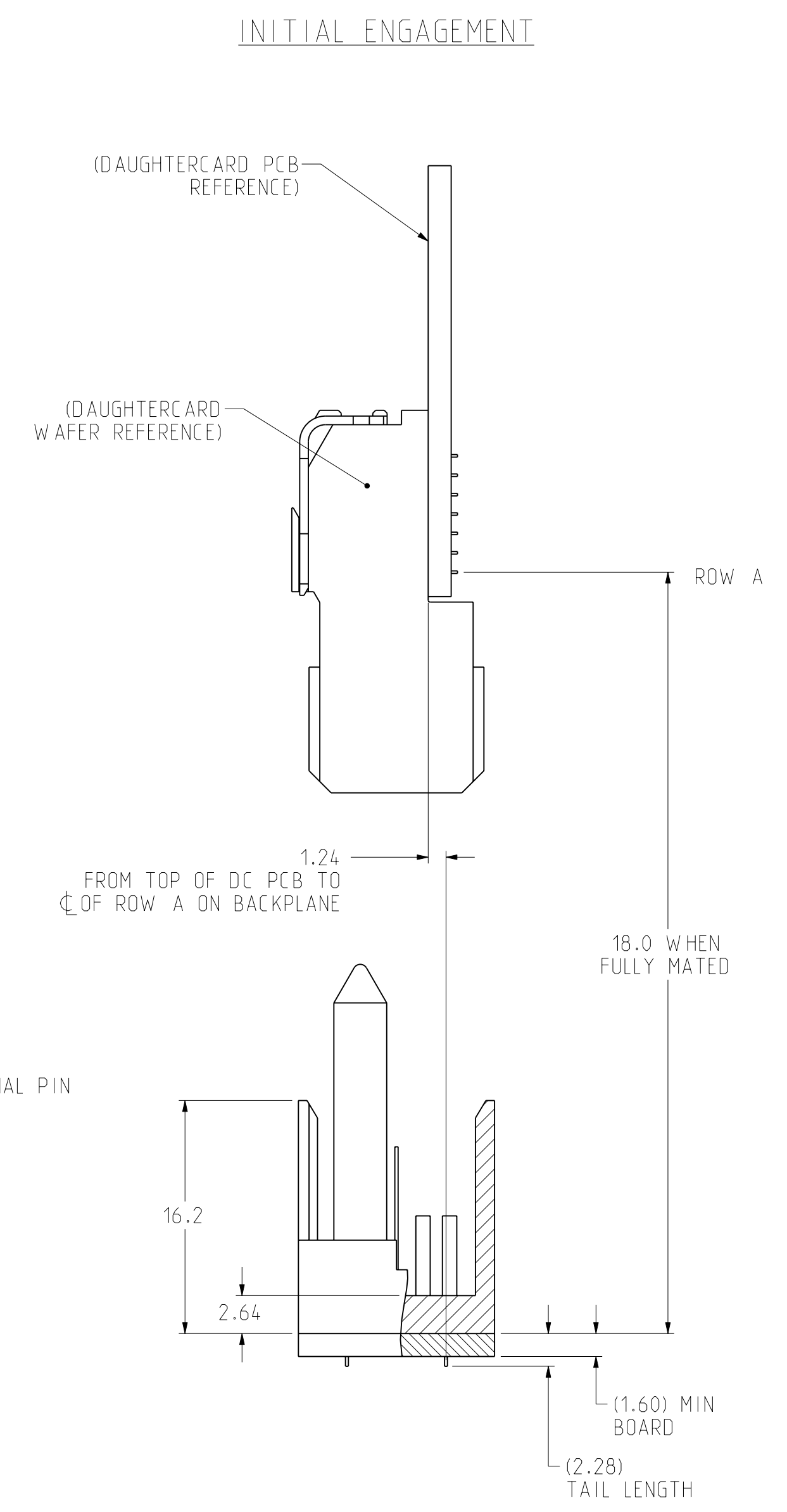


DAUGHTERCARD

DAUGHTERCARD WAFER

SHIELD ROW
SIGNAL ROW
SHIELD ROW
SIGNAL ROW
SHIELD ROW

0.00 OFFSET FROM DC COLUMN TO BP COLUMN



INITIAL ENGAGEMENT

(DAUGHTERCARD PCB REFERENCE)

(DAUGHTERCARD WAFER REFERENCE)

ROW A

1.24 FROM TOP OF DC PCB TO CL OF ROW A ON BACKPLANE

18.0 WHEN FULLY MATED

(1.60) MIN BOARD
(2.28) TAIL LENGTH

IF 4TH DIGIT OF THE PART NUMBER IS 7 OR 8 OR L OR N (CUSTOM PART), DIGIT 5 THROUGH 10 DO NOT FOLLOW THE PARADIGM IN TABLE.

6. USE MATING GAUGE PART NUMBER 699-1085-000 AFTER INSERTION ONTO BOARD TO CHECK POSITION OF BLADES.

5. FOR REPAIR PROCEDURE FOR SIGNAL BLADE, SEE TB-2099.

9th DIGIT OF PART NUMBER IDENTIFIES PLATING.
735 - Ni SULFAMATE, STANDARD GOLD, LEADED
732 - Ni SULFAMATE, HIGH GOLD, LEADED
769 - Ni SULFAMATE, STANDARD GOLD, LEAD-FREE
768 - Ni SULFAMATE, HIGH GOLD, LEAD-FREE
804 - NANO Ni, STANDARD GOLD, LEADED
803 - NANO Ni, HIGH GOLD, LEADED
806 - NANO Ni, STANDARD GOLD, LEAD-FREE
805 - NANO Ni, HIGH GOLD, LEAD-FREE

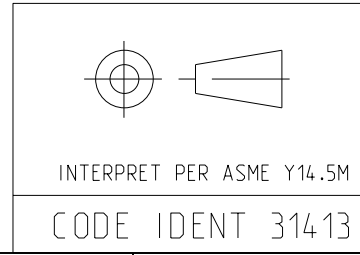
PART MARKING AS FOLLOWS:
LINE 1: "ATCS" AND DATECODE (ATCS YYWW).
LINE 2: MODULE PART NUMBER (325-####-###).
LINE 3: WORK ORDER NUMBER (###*#####), WHERE "*" DENOTES MANUFACTURING LOCATION.

NOTCH DESIGNATES "ROW A" SIDE OF SHROUD. NOTCH FEATURE ON OPPOSITE SIDE FROM PART MARKING.

1. REFER TO TB-2085 FOR GbX PRODUCT SPECIFICATIONS.

NOTES:

TOLERANCES	DESIGN 05-24-2005	DRAWN 06-20-2005	CHK 06-20-2005	APVD 06-20-2005	TITLE	PART NO.	REV
0.0	±0.25	M.DEROSA	M.DEROSA	B.RICHARD	GbXe, 2 PAIR DIFFERENTIAL RIGHT POLARIZING BACKPLANE MODULE	SEE PART NUMBER TREE	N/A
0.00	±0.13	M.DEROSA	M.DEROSA	B.RICHARD			REV C
0.000	±			B.RICHARD			
ANGLES	±						

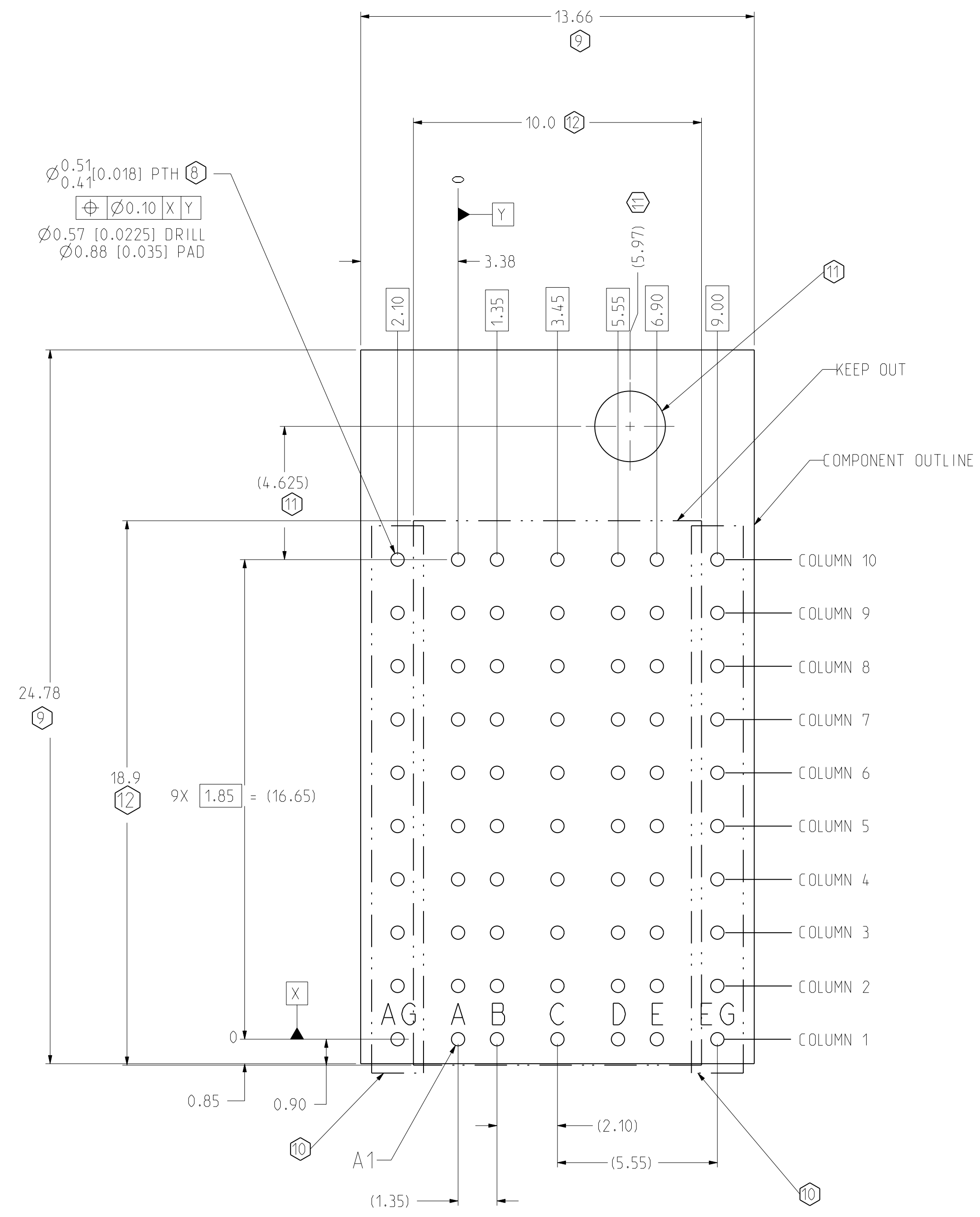


CUSTOMER USE DRAWING

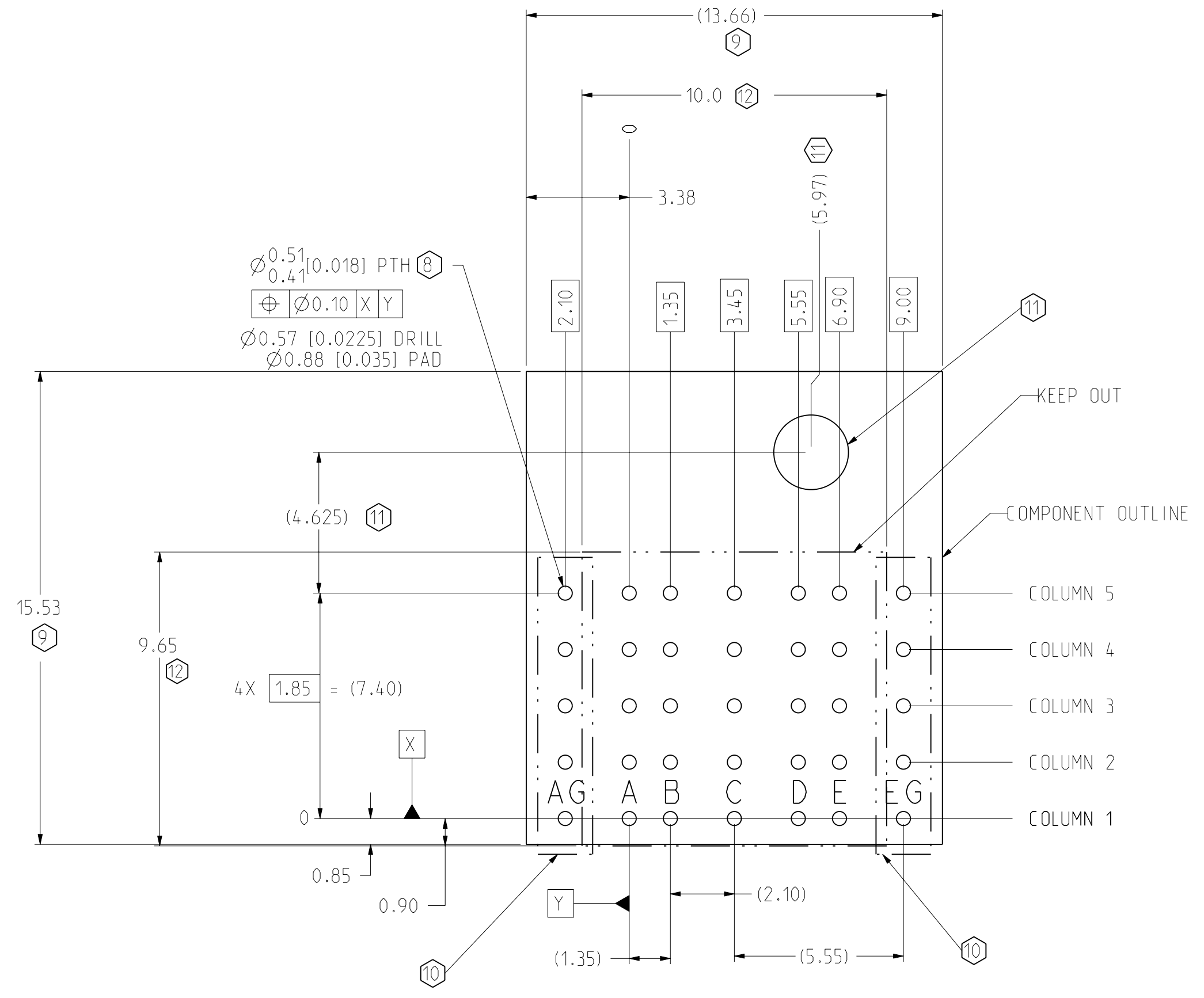
<p>Amphenol TCS A Division of Amphenol Corporation 200 Innovative Way, Nashua, NH 03062 603.879.3000</p>		
<p>UNLESS OTHERWISE SPECIFIED DIMENSIONS ARE IN MM. DECIMAL MARKER IS A PERIOD.</p>	<p>PROJ: P1034-CU-HS-BP-RTPOL PROJ DRAWING: C-325-4010-500</p>	<p>1.2 C.O</p>
<p>SIZE D</p>	<p>SCALE 3/1</p>	<p>SHEET 1 OF 3</p>

DRW NO. C-325-4010-500

SH 1 REV C



10 POSITION GbXe HOLE PATTERN
COMPONENT SIDE SHOWN
SCALE 8/1



05 POSITION GbXe HOLE PATTERN
COMPONENT SIDE SHOWN
SCALE 7/1

- 12 NO SURFACE TRACES IN KEEP OUT ZONE
- 11 OPTIONAL HOLE LOCATION FOR GROUNDED PIN OR ADDITIONAL GUIDE PIN SUPPORT. SEE DOCUMENT C-564-0471-000 FOR DETAIL AND LOCATION. FOR DC BOARD WEIGHT > 8LBS., REFER TO TB-2104 FOR PROPER GUIDE PIN SIZING.
- 10 ADDITIONAL ROWS AG AND HG RECOMMENDED FOR ALL APPLICATIONS. (THESE ROWS SHOULD BE CONNECTED TO GROUND.)
- 9 SEE DOCUMENT 190-0002-000 FOR TOOLING KEEPOUT ZONES.
- 8 STATED PAD SIZE MAY REQUIRE FILLETING. FOR DETAILED ROUTING GUIDELINES, SEE TB-2090.

NOTES:

TOLERANCES		DESIGN	05-24-2005
0.0	±0.25	DRAWN	M.DEROSA
0.00	±0.13	CHK	M.DEROSA
0.000	± -	APVD	B.RICHARD
ANGLES	± -	APVD	B.RICHARD

Amphenol TCS
A Division of Amphenol Corporation
200 Innovative Way, Nashua, NH 03062 603.879.3000

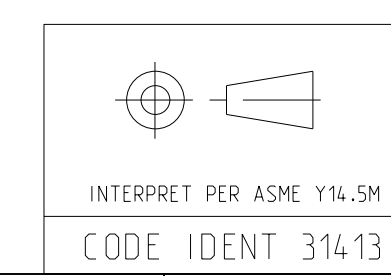
TITLE: GbXe, 2 PAIR DIFFERENTIAL RIGHT POLARIZING BACKPLANE MODULE

PART NO.: SEE PART NUMBER TREE

DRAWING NO.: C-325-4010-500

PROJ. TYPE: P1034-CU-HS-BP-RTPOL

PROJ. DRAWING: C-325-4010-500



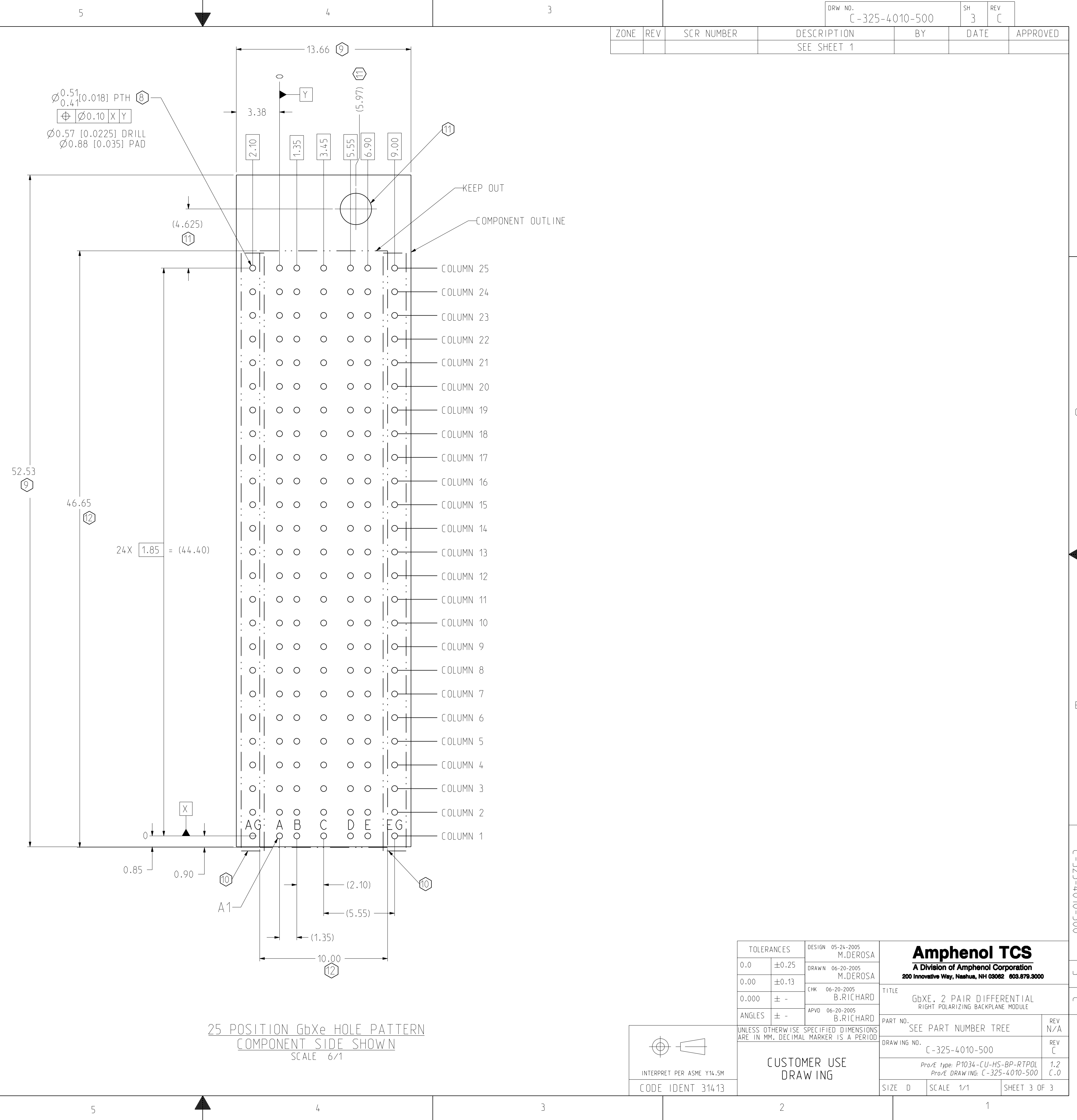
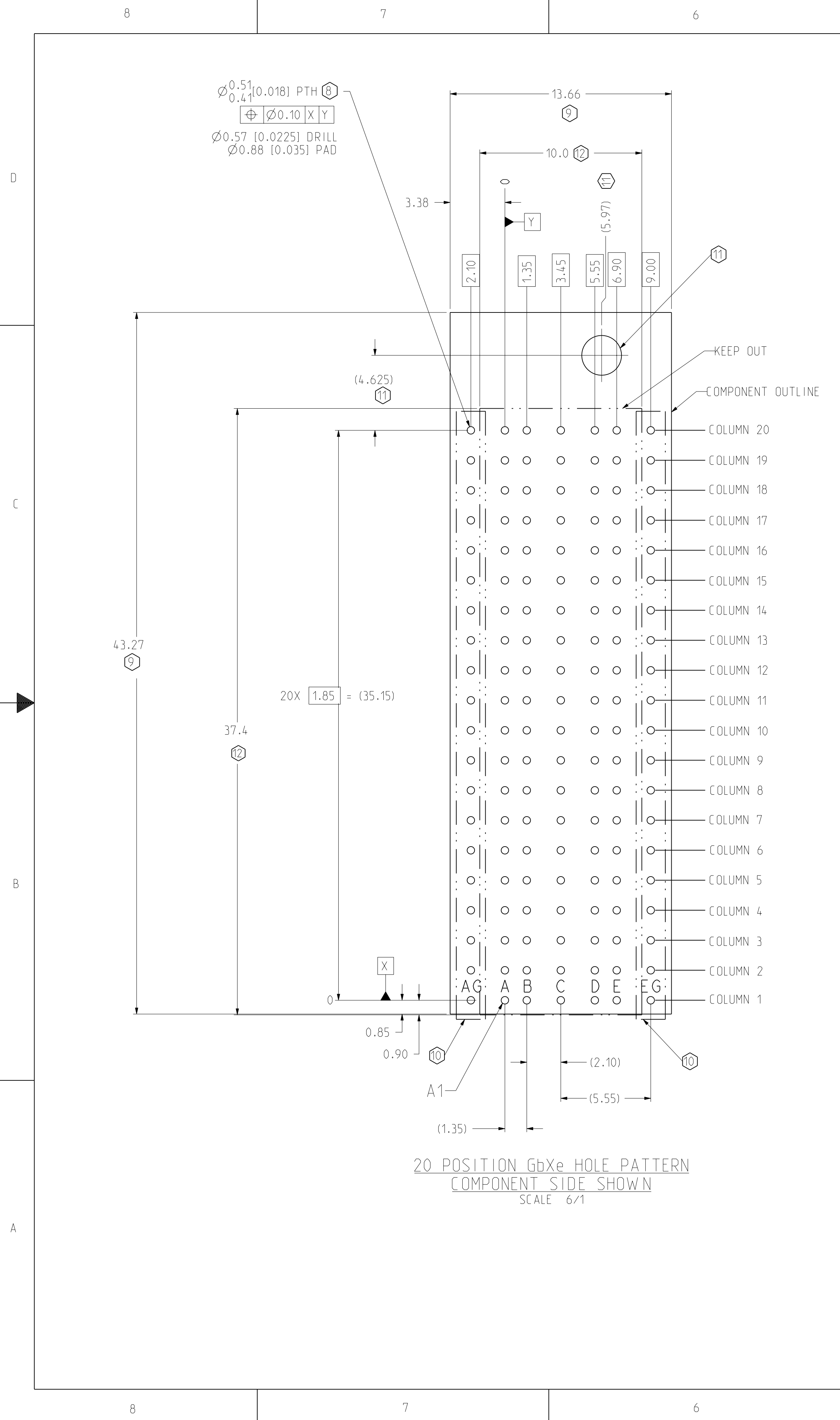
CUSTOMER USE
DRAWING

REV	N/A
REV	C
SCALE	3/1
SHEET	2 OF 3

DRW NO. C-325-4010-500

SH 2
REV C

ZONE	REV	SCR NUMBER	DESCRIPTION	BY	DATE	APPROVED
			SEE SHEET 1			



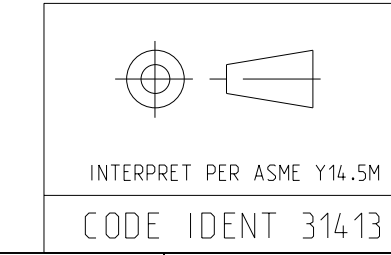
TOLERANCES	DESIGN	DATE
0.0	±0.25	05-24-2005
0.00	±0.13	06-20-2005
0.000	± -	06-20-2005
ANGLES	± -	06-20-2005

DESIGN	DATE	REV
M.DEROSA	05-24-2005	3
M.DEROSA	06-20-2005	C

Amphenol TCS
A Division of Amphenol Corporation
200 Innovative Way, Nashua, NH 03062 603.879.3000

TITLE: GbXe, 2 PAIR DIFFERENTIAL RIGHT POLARIZING BACKPLANE MODULE
PART NO.: SEE PART NUMBER TREE
DRAWING NO.: C-325-4010-500

UNLESS OTHERWISE SPECIFIED DIMENSIONS ARE IN MM. DECIMAL MARKER IS A PERIOD.
CUSTOMER USE DRAWING



PRO/E TYPE	SCALE	SHEET
P1034-CU-HS-BP-RTPOL	1/1	3 OF 3

DRW NO. C-325-4010-500

SH 3 REV C