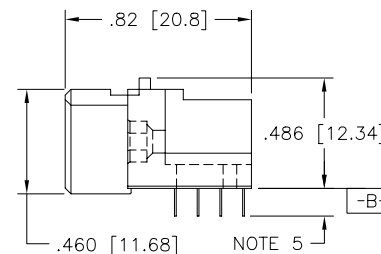
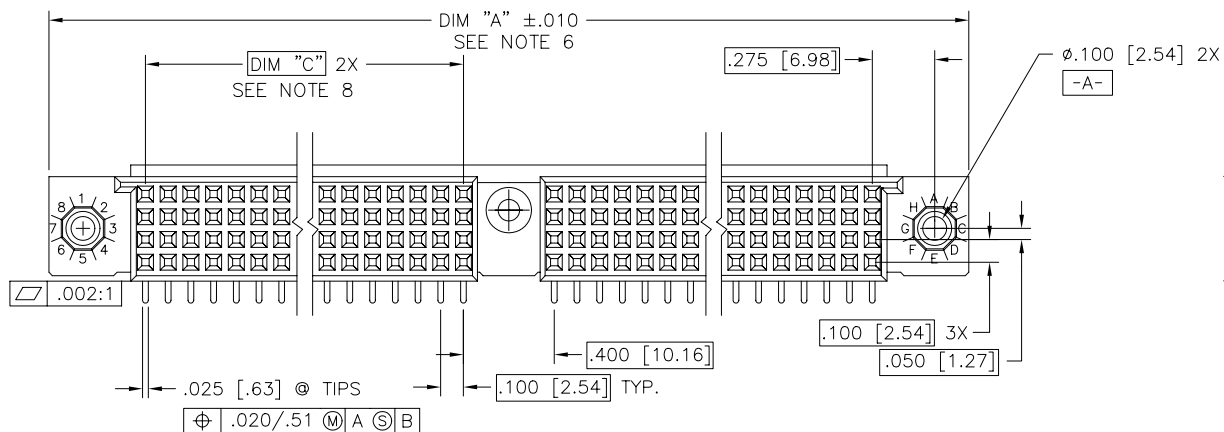
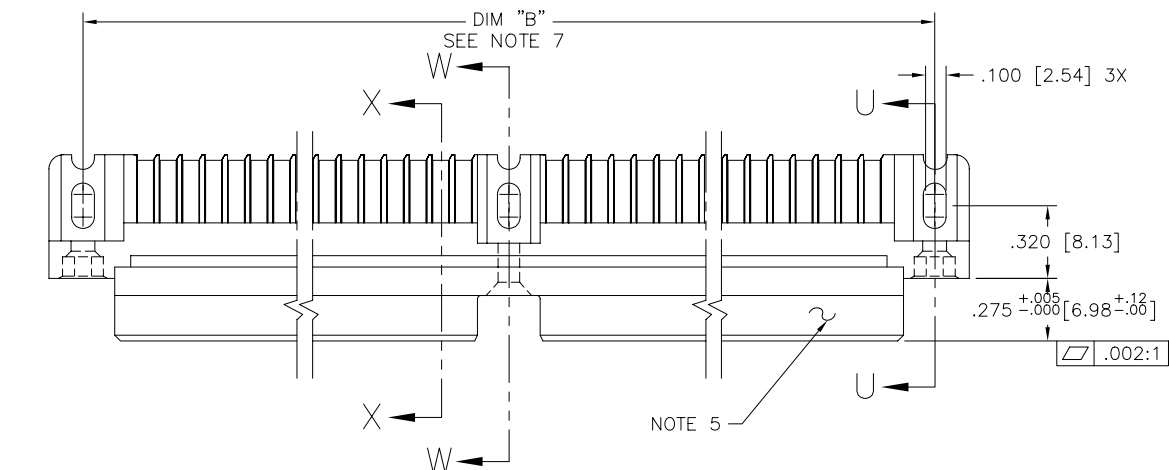




FCIconnect.com

Copyright FCI

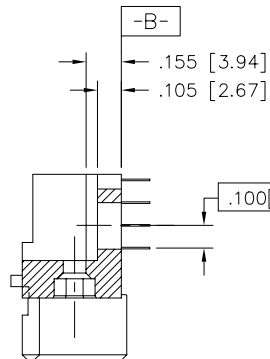
PRODUCT NUMBER
SEE NOTE 1



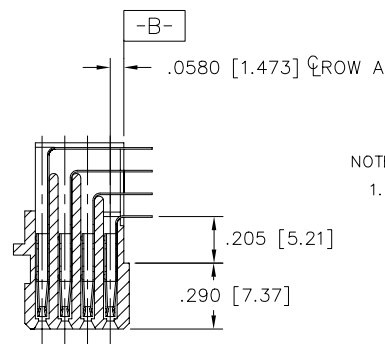
mat'l. code SEE NOTE 3				surface ISO 1302 <input checked="" type="checkbox"/>	tolerance ISO 406 ISO 1101	projection 	product family HPC
ltr	ecn	no	dr	date	tolerances unless otherwise specified	INCH/MM scale 1:1 	title 4 ROW R/A RECEPTACLE SOLDER TAIL, 1 GUIDE PIN
E	v31937	PDP		11/10/93	angles		dwg no
F	v41511	GAH		10/13/94	linear		50004
G	v50266	SAR		9/05/95	$\sigma \pm 2'$		sheet 1 of 2 size
H	v82251	HTB	dr	12/28/98	D. SHEAFFER		A3
J	v00253	JWS	enr	1/12/00	S. CLARK	type	Product Customer Drawing
K	v05-0510	LP	chr	7/18/05	S. CLARK		
L	M06-0255	AEA	appd	7/06/06	S. CLARK		
sheet index	revision	L	L				
	sheet	1	2				

form: A3

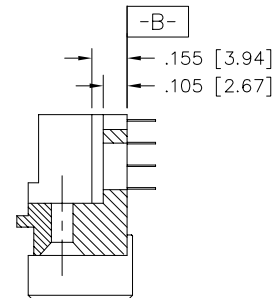
PRODUCT NUMBER SEE NOTE 1	NUMBER OF POSITIONS SEE NOTE 2	"Z" - TAIL LENGTH	SOLDER TAIL PLATING	CONTACT PLATING
50004-1YYYZ	YYY	NOTE 4	TIN LEAD	30u"/.76um Au
50004-3YYYZ	YYY	NOTE 4	TIN LEAD	50u"/1.27um Au
50004-5YYYZ	YYY	NOTE 4	TIN LEAD	30u"/.76um GXT
50004-5YYYZLF	YYY	NOTE 4	TIN	30u"/.76um GXT



SECTION U-U



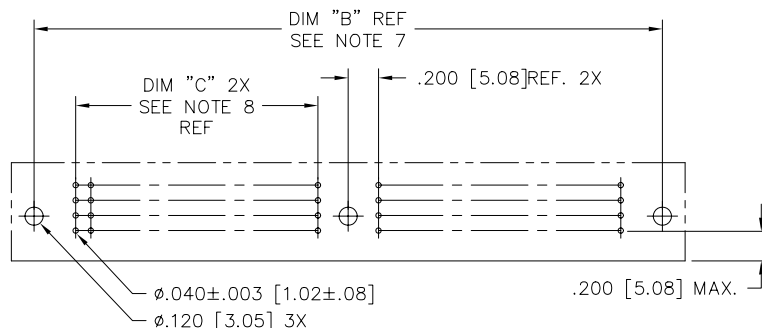
SECTION X-X



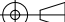

SECTION W-W

NOTES:

- PRODUCT NUMBERING CODE:
50004 - X YYY Z LF
LEAD FREE (OPTIONAL WITH GTX VERSION)
TAIL LENGTH (NOTE 4)
NO. OF POSITIONS (NOTE 2)
PLATING (SEE TABLE)
BASE NUMBER
- THIS PRODUCT IS CONFIGURED IN SIZES OF 20 THRU 122 COLUMNS IN INCREMENTS OF TWO.
i.e.: 20,22,24,26.....118,120,122.
- HOUSING MATERIAL: GLASS AND MINERAL FILLED THERMOPLASTIC.
CONTACT MATERIAL: BeCu
- "Z" - TAIL LENGTH OPTIONS:
E = .125±.010 / 3.18±.25
F = .145±.010 / 3.68±.25
H = .180±.010 / 4.57±.25
- COMPANY NAME, PART NUMBER AND LOT CODE TO APPEAR ON THIS SURFACE PER BUS-12-108.
- DIMENSION "A" CALCULATION = .100 (2.54) X NO. OF COLUMNS + 1.05 (26.7)
- DIMENSION "B" CALCULATION = .100 (2.54) X NO. OF COLUMNS + .750 (19.05)
- DIMENSION "C" CALCULATION = .100 (2.54) X NO. OF COLUMNS DIVIDED BY 2 - .100 (2.54)
- PRODUCT WITH "LF" SUFFIX MEETS EUROPEAN UNION DIRECTIVES AND OTHER COUNTRY REGULATIONS AS DESCRIBED IN GS-22-008.
- THIS HOUSING WILL WITHSTAND EXPOSURE TO 260 DEGREES C PEAK TEMPERATURE FOR 10 - 30 SECONDS IN A CONVECTION, INFRA-RED OR VAPOR PHASE REFLOW OVEN.



RECOMMENDED PCB LAYOUT
(ALL HOLES LOCATED ON .100 [2.54] GRID
UNLESS OTHERWISE SPECIFIED)

mat'l. code NOTE 3				surface ISO 1302 ✓		tolerance ISO 406 ISO 1101		projection 		product family HPC					
ltr ecr no dr date				tolerances unless otherwise specified						title					
L				angles		linear		INCH/MM		4 ROW R/A RECEPTACLE					
						.XX ±.01/.3				SOLDER TAIL, 1 GUIDE PIN					
						.XXX ±.005/.13									
				0°±2'		.XXXX ±.0020/.051		scale 1:1							
				dr		D. SHEAFFER		1/07/90		dwg no		sheet 2 of 2		size	
				enrg		S. CLARK		1/07/90				50004		A3	
				chr		S. CLARK		1/07/90							
				appd		S. CLARK		1/07/90		type		Product		Customer Drawing	
sheet index		revision sheet													