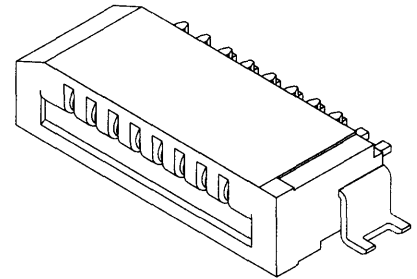


molex® 1.00mm (.039") Pitch FFC/FPC Connector

52793 Right Angle, SMT Non-ZIF Top Contact Style



FEATURES AND SPECIFICATIONS

Features and Benefits

- Sizes 4 to 30 circuits
- For 0.30mm thick FFC/FPC
- Metal solder tabs provide PCB hold-down and strain relief for SMT tails

Reference Information

Packaging: Embossed tape
Designed In: Millimeters

Electrical

Voltage: 50V
Current: 0.5A
Contact Resistance: 30mΩ max.
Dielectric Withstanding Voltage: 500V AC
Insulation Resistance: 100 MΩ min.

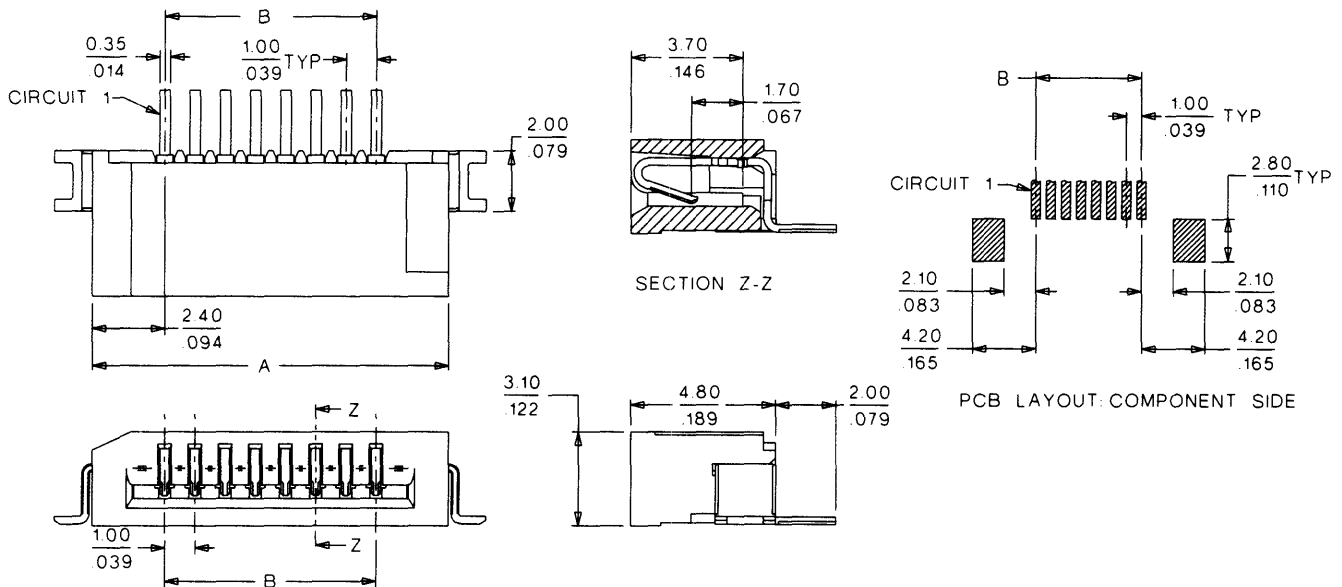
Physical

Housing: PPS, UL 94V-0
Contact: Phosphor Bronze
Plating: Tin/Lead
Solder Tabs: Phosphor Bronze, Tin/Lead plating
Operating Temperature: -20 to +80°C

FFC/FPC Connectors

G

CATALOG DRAWING (FOR REFERENCE ONLY)



ORDERING INFORMATION AND DIMENSIONS

Circuits	Order No.	Dimension		Carrier Tape Width
		A	B	
4	52793-0490	7.80 (.307)	3.00 (.118)	24.00 (.945)
5	52793-0590	8.80 (.346)	4.00 (.157)	24.00 (.945)
7	52793-0790	10.80 (.425)	6.00 (.236)	24.00 (.945)
8	52793-0890	11.80 (.464)	7.00 (.275)	24.00 (.945)
9	52793-0990	12.80 (.503)	8.00 (.314)	24.00 (.945)
10	52793-1090	13.80 (.543)	9.00 (.354)	24.00 (.945)
12	52793-1290	15.80 (.622)	11.00 (.433)	32.00 (1.260)
13	52793-1390	16.80 (.661)	12.00 (.472)	32.00 (1.260)
14	52793-1490	17.80 (.700)	13.00 (.511)	32.00 (1.260)
15	52793-1590	18.80 (.740)	14.00 (.551)	32.00 (1.260)
16	52793-1690	19.80 (.779)	15.00 (.590)	32.00 (1.260)

Circuits	Order No.	Dimension		Carrier Tape Width
		A	B	
18	52793-1890	21.80 (.858)	17.00 (.669)	44.00 (1.732)
19	52793-1990	22.80 (.897)	18.00 (.708)	44.00 (1.732)
20	52793-2090	23.80 (.937)	19.00 (.748)	44.00 (1.732)
22	52793-2290	25.80 (1.015)	21.00 (.826)	44.00 (1.732)
23	52793-2390	26.80 (1.055)	22.00 (.866)	44.00 (1.732)
24	52793-2490	27.80 (1.094)	23.00 (.905)	44.00 (1.732)
25	52793-2590	28.80 (1.133)	24.00 (.944)	44.00 (1.732)
26	52793-2690	29.80 (1.173)	25.00 (.984)	44.00 (1.732)
27	52793-2790	30.80 (1.212)	26.00 (1.023)	44.00 (1.732)
28	52793-2890	31.80 (1.251)	27.00 (1.062)	56.00 (2.205)
30	52793-3090	33.80 (1.330)	29.00 (1.141)	56.00 (2.205)

Note: For cable specification dimensions, see cable pages at end of section