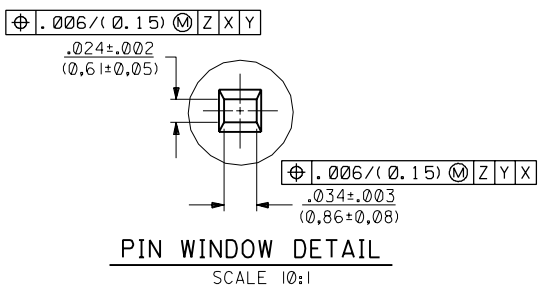
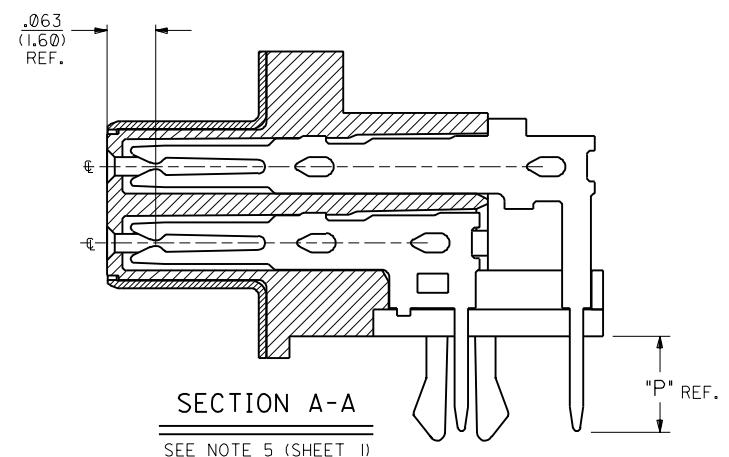
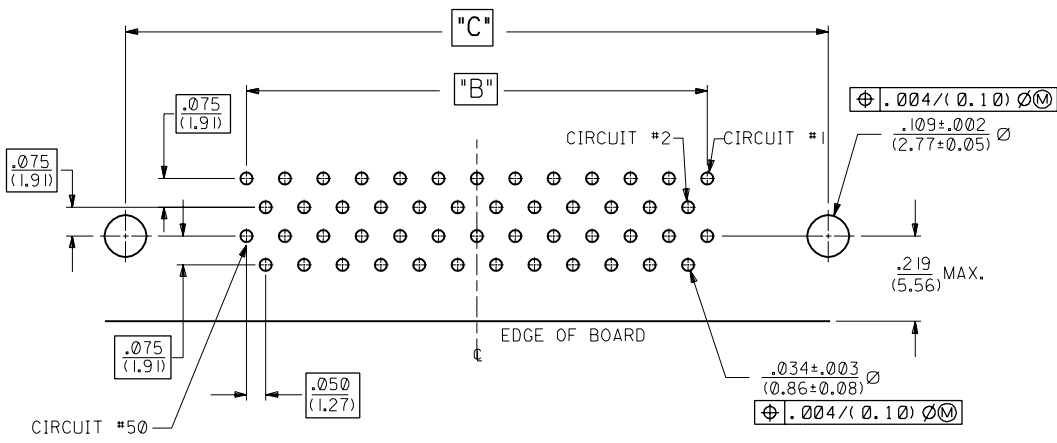
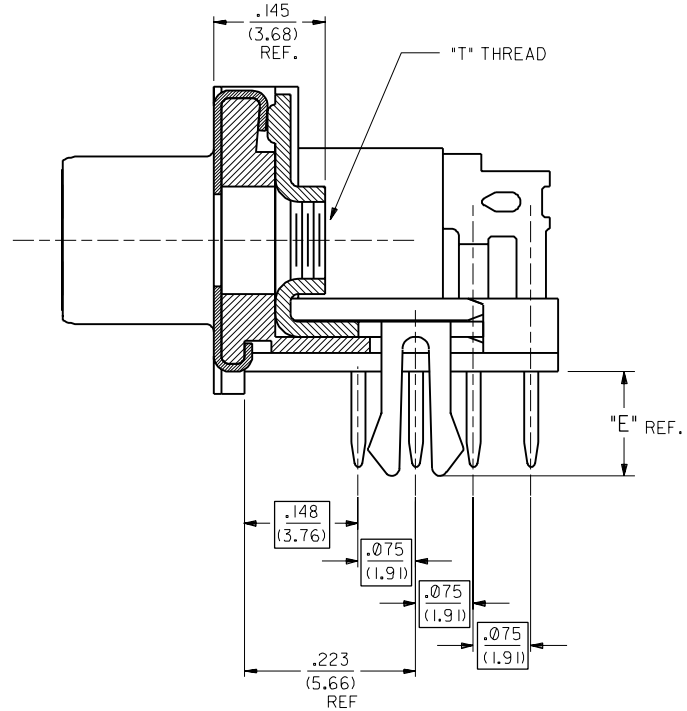
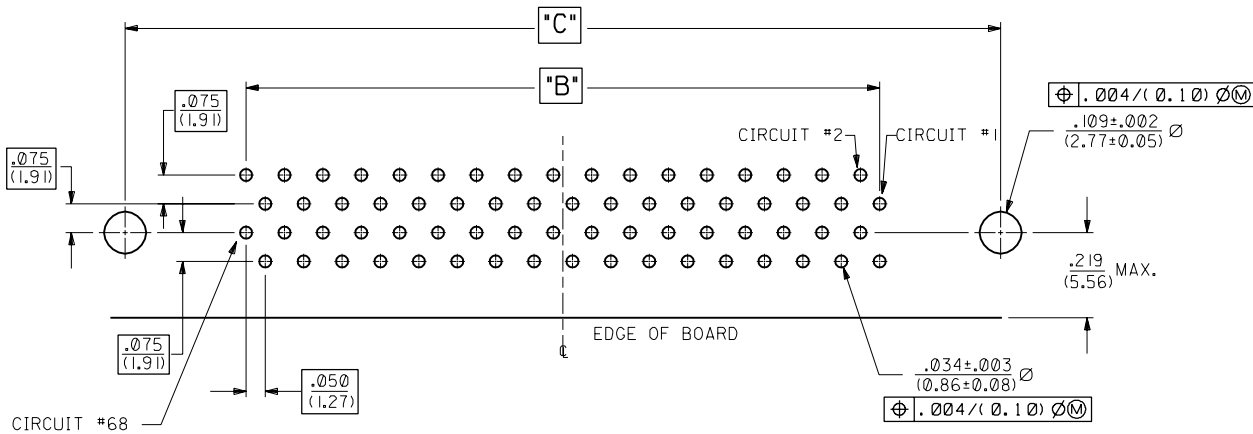


- NOTES:**
- MATERIAL:  
RECEPTACLE HSG: GLASS FILLED LIQUID CRYSTAL POLYMER;  
COLOR: BLACK; UL 94V-0  
SHIELD: STEEL  
TERMINALS: BRASS  
GROUND CLIPS: BRASS
  - FINISH:  
SHIELD: BRIGHT TIN OVER ALL WITH NICKEL UNDERPLATE.  
TERMINALS: SHOWN ON THIS SHEET.  
GROUND CLIPS: TIN OVER NICKEL PLATE.
  - REFER TO PS-74184-001 PRODUCT SPEC. FOR ELECTRICAL, MECHANICAL AND ENVIRONMENTAL SPECIFICATIONS.
  - PACKAGING: PARTS PACKAGED IN TUBES PER PK-70873-0207.
  - FOR FIXED TAIL/PCB PATTERN AT LAST CIRCUIT POSITIONS REFER TO SECTION AA ON SHEET 2. PCB LAYOUTS SHOWN ON SHEET 2.
  - SEE SHEET 3 FOR PART NUMBERS AND CHARTED DIMENSIONS.

**TERMINAL FINISH:**  
SELECTIVE GOLD IN CONTACT AREA;  
THICKNESS = 15 MICROINCH MINIMUM.  
SELECTIVE TIN/LEAD ALLOY IN THE PC TAIL  
THICKNESS = 75 MICROINCH MINIMUM.  
BOTH OVER NICKEL UNDERPLATE.

SCREWLOK NOTE S.3 EC NO. UCP2004-0240 DRAWN BY WHITE 03/07/31 CHK: DMORGAN 03/07/31 APPR: SMILLER 03/07/31	QUALITY SYMBOLS MAJOR $\nabla = 0$ CRITICAL $\nabla = 0$	GENERAL TOLERANCES: (UNLESS SPECIFIED)		SCALE 4:1	DESIGN UNITS <input type="checkbox"/> mm <input checked="" type="checkbox"/> INCH	DIMENSIONS: <input type="checkbox"/> mm <input checked="" type="checkbox"/> INCH <input type="checkbox"/> mm ONLY	THIRD ANGLE PROJECTION	TITLE: SALES- SCSI RIGHT ANGLE SHIELDED RECEPTACLE ASSEMBLY (SERIES II)	SHT 3 REV B
		DRAWN BY & DATE J. Long 99/01/25	CHECKED BY & DATE J. Long 99/01/25	APPROVED BY & DATE BRINKMAN 99/02/22	CAD FILENAME	MATERIAL NO. SEE SHT 3	DRAWING NO. SD-74302-002	SHEET NO. 1 OF 3	
REV B	DESCRIPTION	4 PLACES $\pm 0.$ $\pm .$ 3 PLACES $\pm 0.$ $\pm .005$ 2 PLACES $\pm 0.13$ $\pm .$ 1 PLACE $\pm 0.$ $\pm .$	ANGULAR: $\pm 1/2^\circ$	DRAFT WHERE APPLICABLE MUST REMAIN WITHIN DIMENSIONS		THIS DRAWING CONTAINS INFORMATION THAT IS PROPRIETARY TO MOLEX INCORPORATED AND SHOULD NOT BE USED WITHOUT WRITTEN PERMISSION.		SIZE C	



INITIAL RELEASE EC NO. UDT 1999-0571 DRAWN: J. LONG 99/01/26 CHK: J. LONG 99/01/26 APPR: BRINKMAN 99/02/22	DESCRIPTION MAJOR CRITICAL	GENERAL TOLERANCES: (UNLESS SPECIFIED)		SCALE 8:1	DESIGN UNITS <input type="checkbox"/> mm <input checked="" type="checkbox"/> INCH	DIMENSIONS: <input type="checkbox"/> mm <input checked="" type="checkbox"/> INCH <input type="checkbox"/> mm ONLY		SHT	REV
		4 PLACES ±0. ±.	3 PLACES ±0. ±.005	2 PLACES ±0.13 ±.	1 PLACE ±0. ±.	DRAWN BY & DATE <i>J. Long</i> 99/01/26		THIRD ANGLE PROJECTION	
A	REV	DRAFT WHERE APPLICABLE MUST REMAIN WITHIN DIMENSIONS		APPROVED BY & DATE <i>J. Long</i> 99/01/26		TITLE: SALES - SCSI RIGHT ANGLE SHIELDED RECEPTACLE ASSEMBLY (SERIES II)		MATERIAL NO.	
				CAD FILENAME		MOLEX INCORPORATED		DRAWING NO. SD-74302-002	
				ANGULAR: ± 1/2°		SEE SHT 3		SHEET NO. 2	
				THIS DRAWING CONTAINS INFORMATION THAT IS PROPRIETARY TO MOLEX INCORPORATED AND SHOULD NOT BE USED WITHOUT WRITTEN PERMISSION.				SIZE C	

ASSEMBLIES WITH .078 DIAMETER END HOLES IN HOUSING AND #2-56 GND CLIPS

MATERIAL NUMBER	CKT. SIZE	PLATING	HOLE DIA.	DIM. T GND CLIP THREAD	DIM. A		DIM. B		DIM. C		DIM. D		DIM. E		DIM. P		RECMD PCB	
					INCH	MM	INCH	MM	INCH	MM	INCH	MM	INCH	MM	INCH	MM	INCH	MM
74302-1001	50	571	.078	2-56	2.065	52.54	1.200	30.48	1.830	46.48	1.366	34.69	.105	2.67	.125	3.18	.062	1.57
74302-1002	68	571	.078	2-56	2.515	63.88	1.650	41.91	2.280	57.91	1.816	46.13	.105	2.67	.125	3.18	.062	1.57
74302-1003	50	571	.078	2-56	2.065	52.54	1.200	30.48	1.830	46.48	1.366	34.69	.136	3.45	.125	3.18	.093	2.36
74302-1004	68	571	.078	2-56	2.515	63.88	1.650	41.91	2.280	57.91	1.816	46.13	.136	3.45	.125	3.18	.093	2.36
74302-1005	50	571	.078	2-56	2.065	52.54	1.200	30.48	1.830	46.48	1.366	34.69	.164	4.27	.165	4.19	.125	3.18
74302-1006	68	571	.078	2-56	2.515	63.88	1.650	41.91	2.280	57.91	1.816	46.13	.164	4.27	.165	4.19	.125	3.18

SCREWLOCKS TO BE INSERTED USING POWER DRIVER.

ASSEMBLIES WITH .120 DIAMETER END HOLES IN HOUSING AND #2-56 GND CLIPS

MATERIAL NUMBER	CKT. SIZE	PLATING	HOLE DIA.	DIM. T GND CLIP THREAD	DIM. A		DIM. B		DIM. C		DIM. D		DIM. E		DIM. P		RECMD PCB	
					INCH	MM	INCH	MM	INCH	MM	INCH	MM	INCH	MM	INCH	MM	INCH	MM
74302-1101	50	571	.120	2-56	2.065	52.54	1.200	30.48	1.830	46.48	1.366	34.69	.105	2.67	.125	3.18	.062	1.57
74302-1102	68	571	.120	2-56	2.515	63.88	1.650	41.91	2.280	57.91	1.816	46.13	.105	2.67	.125	3.18	.062	1.57
74302-1103	50	571	.120	2-56	2.065	52.54	1.200	30.48	1.830	46.48	1.366	34.69	.136	3.45	.125	3.18	.093	2.36
74302-1104	68	571	.120	2-56	2.515	63.88	1.650	41.91	2.280	57.91	1.816	46.13	.136	3.45	.125	3.18	.093	2.36
74302-1105	50	571	.120	2-56	2.065	52.54	1.200	30.48	1.830	46.48	1.366	34.69	.164	4.27	.165	4.19	.125	3.18
74302-1106	68	571	.120	2-56	2.515	63.88	1.650	41.91	2.280	57.91	1.816	46.13	.164	4.27	.165	4.19	.125	3.18

SCREWLOCKS TO BE INSERTED USING MANUAL DRIVER.

ASSEMBLIES WITH .105 DIAMETER END HOLES IN HOUSING AND #4-40 GND CLIPS

MATERIAL NUMBER	CKT. SIZE	PLATING	HOLE DIA.	DIM. T GND CLIP THREAD	DIM. A		DIM. B		DIM. C		DIM. D		DIM. E		DIM. P		RECMD PCB	
					INCH	MM	INCH	MM	INCH	MM	INCH	MM	INCH	MM	INCH	MM	INCH	MM
74302-1201	50	571	.105	4-40	2.065	52.54	1.200	30.48	1.830	46.48	1.366	34.69	.105	2.67	.125	3.18	.062	1.57
74302-1202	68	571	.105	4-40	2.515	63.88	1.650	41.91	2.280	57.91	1.816	46.13	.105	2.67	.125	3.18	.062	1.57
74302-1203	50	571	.105	4-40	2.065	52.54	1.200	30.48	1.830	46.48	1.366	34.69	.136	3.45	.125	3.18	.093	2.36
74302-1204	68	571	.105	4-40	2.515	63.88	1.650	41.91	2.280	57.91	1.816	46.13	.136	3.45	.125	3.18	.093	2.36
74302-1205	50	571	.105	4-40	2.065	52.54	1.200	30.48	1.830	46.48	1.366	34.69	.164	4.27	.165	4.19	.125	3.18
74302-1206	68	571	.105	4-40	2.515	63.88	1.650	41.91	2.280	57.91	1.816	46.13	.164	4.27	.165	4.19	.125	3.18

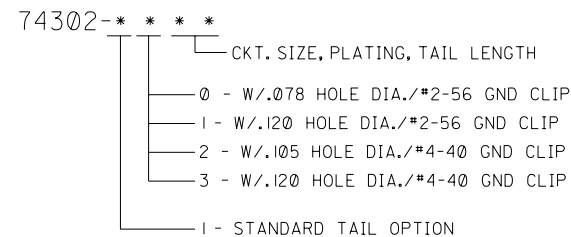
SCREWLOCKS TO BE INSERTED USING POWER DRIVER.

ASSEMBLIES WITH .120 DIAMETER END HOLES IN HOUSING AND #4-40 GND CLIPS

MATERIAL NUMBER	CKT. SIZE	PLATING	HOLE DIA.	DIM. T GND CLIP THREAD	DIM. A		DIM. B		DIM. C		DIM. D		DIM. E		DIM. P		RECMD PCB	
					INCH	MM	INCH	MM	INCH	MM	INCH	MM	INCH	MM	INCH	MM	INCH	MM
74302-1301	50	571	.120	4-40	2.065	52.54	1.200	30.48	1.830	46.48	1.366	34.69	.105	2.67	.125	3.18	.062	1.57
74302-1302	68	571	.120	4-40	2.515	63.88	1.650	41.91	2.280	57.91	1.816	46.13	.105	2.67	.125	3.18	.062	1.57
74302-1303	50	571	.120	4-40	2.065	52.54	1.200	30.48	1.830	46.48	1.366	34.69	.136	3.45	.125	3.18	.093	2.36
74302-1304	68	571	.120	4-40	2.515	63.88	1.650	41.91	2.280	57.91	1.816	46.13	.136	3.45	.125	3.18	.093	2.36
74302-1305	50	571	.120	4-40	2.065	52.54	1.200	30.48	1.830	46.48	1.366	34.69	.164	4.27	.165	4.19	.125	3.18
74302-1306	68	571	.120	4-40	2.515	63.88	1.650	41.91	2.280	57.91	1.816	46.13	.164	4.27	.165	4.19	.125	3.18

SCREWLOCKS TO BE INSERTED USING MANUAL DRIVER.

X = OPTIONAL CONFIGURATION; NOT TOOLED



SCREWLOCK NOTES EC No. UCP2004-0240 DRWNR: WHITE 03/07/31 CHK: DMORGAN 03/07/31 APPR: SWILLER 03/07/31	QUALITY SYMBOLS MAJOR $\nabla=0$ CRITICAL $\nabla=0$	GENERAL TOLERANCES: (UNLESS SPECIFIED) mm      INCH		SCALE: --:-- DESIGN UNITS: <input type="checkbox"/> mm <input checked="" type="checkbox"/> INCH	DIMENSIONS: <input type="checkbox"/> mm <input checked="" type="checkbox"/> INCH <input type="checkbox"/> mm ONLY	SHT    REV REVISE ON CAD ONLY
		4 PLACES ±0.      ±.		DRAWN BY & DATE J. Long 22/01/22	TITLE: SALES - SCSI RIGHT ANGLE SHIELDED RECEPTACLE ASSEMBLY (SERIES II)	
		3 PLACES ±0.      ±.005		CHECKED BY & DATE J. Long 99/01/22	MOLEX INCORPORATED	
		2 PLACES ±0.13      ±.		APPROVED BY & DATE BRINKMAN 99/02/22	MATERIAL NO. SEE CHART	DRAWING NO. SD-74302-002
1 PLACE ±0.      ±.		ANGULAR: ± 1/2°	CAD FILENAME		SIZE C	
DRAFT WHERE APPLICABLE MUST REMAIN WITHIN DIMENSIONS			THIS DRAWING CONTAINS INFORMATION THAT IS PROPRIETARY TO MOLEX INCORPORATED AND SHOULD NOT BE USED WITHOUT WRITTEN PERMISSION.			