

# SERIES 76

## .375" Double Row Barrier Terminal Strip

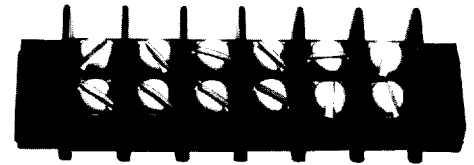
### Description

The series 76, double row high barrier terminal strip is ideal for making up to 30 wire to wire terminations. The extensive offering of screw, quick connect and solder hardware options can solve virtually any connection scheme and the high barriers provide superior circuit isolation.

Made in the USA, all Beau terminal blocks embody the highest quality standards in the industry-using the finest materials and world class manufacturing processes. They meet or exceed all applicable industry standards.

### Features

- **Closed or feed-thru** design allows the series 76 to be mounted directly on a sheet metal panel or placed over a panel cutout.
- **Molded to exact length**, with no ugly saw cuts, Beau terminal strips make your products look more professional. The terminal block is the one component that your customer is sure to see.
- **Wide variety of options.** Our broad range of screw, terminal, hardware and mounting options allows us to save you assembly costs and improve interconnect performance.



### PRODUCT RATINGS

#### #6-32 BINDING HEAD SCREW

<b>UL</b>	Class B	15 Amps @ 300 V 14 AWG
	Class C	15 Amps @ 150 V 14 AWG
<b>CSA</b>	Class B	20 Amps @ 300 V 14 AWG
	Class C	20 Amps @ 300 V 14 AWG

#### #6-32 WIRE CLAMP SCREW

<b>UL</b>	Class B	20 Amps @ 300 V 12 AWG
	Class C	20 Amps @ 150 V 12 AWG
<b>CSA</b>	Class B	20 Amps @ 300 V 12 AWG
	Class C	20 Amps @ 300 V 12 AWG

NOTE: 3.5M screws carry #6-32 screw ratings.

### APPROVALS

<b>UL</b>	File No. E48521
	Guide No. XCFR2
<b>CSA</b>	File No. 025562

### TECHNICAL SPECIFICATIONS

#### ELECTRICAL

DVV	10500 VDC
IR	>5000 Megohms

#### MECHANICAL

Tightening torque	8 in.-lbs.
Maximum torque	13 in.-lbs.
Wire strip length	5/16"
Wire range	12 to 24 AWG

#### ENVIRONMENTAL

Continuous Use Temp	
RTI electrical	110°C
RTI mechanical w/o impact	110°C

### MATERIALS

Insulator	Thermoplastic, UL94V0, black
Terminal	Brass, nickel plate
Screws	#6-32, phillips/slotted, steel, zinc chromate plate

### OPTIONS

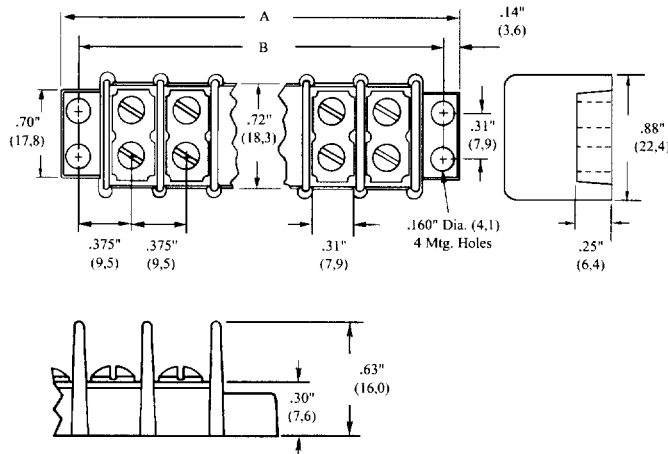
-45	Slotted screw
-45-56	Stainless steel screws, slotted
-47	Screws up, wire ready
-49	Brass, phillips/slotted screw
-50	Clamp washer, phillips/slotted screw
-58	No screws, barrier only
-59	Screws supplied unassembled
-60	One row screws unassembled
-61	One row screws not supplied
-C	No mounting ends
-M	3.5 M screw, slotted
-V	130°C insulator

### HOW TO ORDER

<b>7</b>	<b>6</b>	<b>X</b>	<b>X</b>	<b>X</b>	<b>X</b>	<b>X</b>
SERIES	TERMINAL STYLE	NO. OF POLES	OPTIONS			
	0 1 2	2 to 30	(Dash #s above and opposite page)			
	3 4 5					
	6 7					

\*Consult factory for combinations of screw options.

# SERIES 76



No. of Circuits	A		B	
	in.	mm	in.	mm
2	1.41	35,8	1.13	28,7
3	1.78	45,2	1.50	38,1
4	2.16	54,9	1.88	47,8
5	2.53	64,3	2.25	57,2
6	2.91	73,9	2.63	66,8
7	3.28	83,3	3.00	76,2
8	3.66	93,1	3.38	85,9
9	4.03	102	3.75	95,3
10	4.41	112	4.13	105
11	4.78	121	4.50	114
12	5.16	131	4.88	124
13	5.53	140	5.25	133
14	5.91	150	5.63	143
15	6.28	160	6.00	152
16	6.66	169	6.38	162
17	7.03	179	6.75	171
18	7.41	188	7.13	181
19	7.78	198	7.50	191
20	8.16	207	7.88	200
21	8.53	217	8.25	210
22	8.91	226	8.63	219
23	9.28	236	9.00	229
24	9.66	245	9.38	238
25	10.03	255	9.75	248
26	10.41	264	10.13	257
27	10.78	274	10.50	267
28	11.16	283	10.88	276
29	11.53	293	11.25	286
30	11.91	303	11.63	295

## TERMINAL STYLES

**STYLE 0**  
Screw Terminal

**Style 1**  
One Sided Solder

P/N 141

**STYLE 2**  
Two Sided Solder

P/N 142

**STYLE 3**  
Short Solder

P/N 143

**STYLE 4**  
Short PC

P/N 144

**STYLE 5**  
Long Solder

P/N 145

**STYLE 6**  
Long PC

P/N 146

**Style 7**  
Wire Wrap

P/N 147