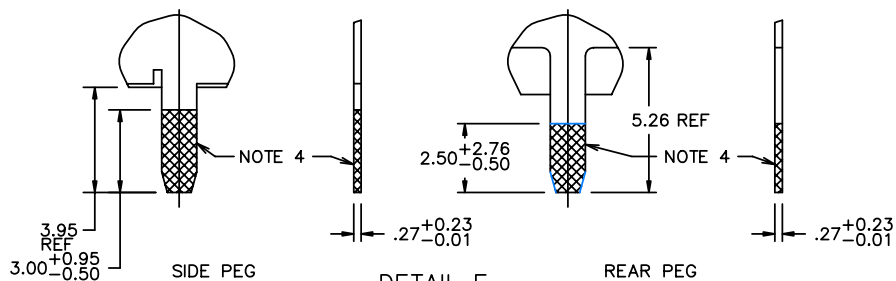
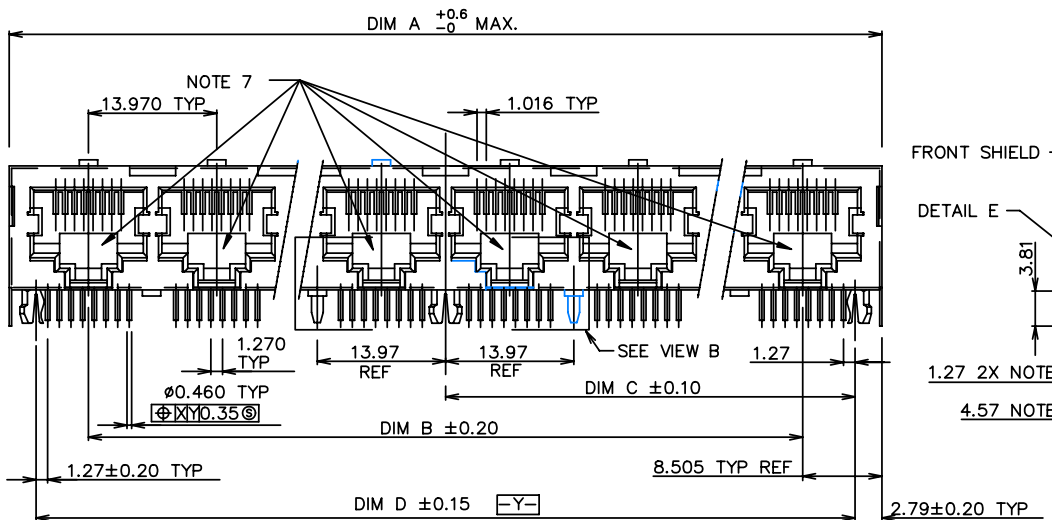
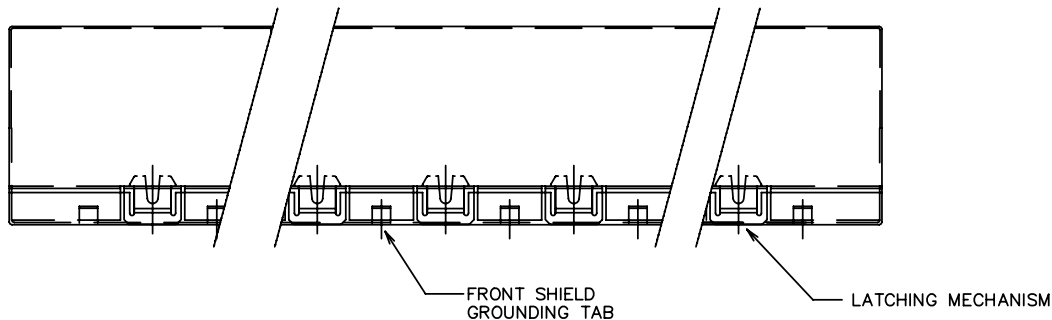
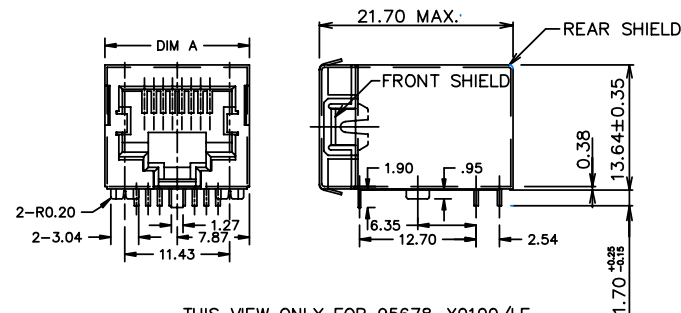


Tous droits strictement réservés. Reproduction ou communication à des tiers interdite sans autorisation écrite du propriétaire.  
FCI  
All rights strictly reserved. Reproduction or issue to third parties in any form or by any means, electronic or mechanical, including photocopying, recording, or by any information storage and retrieval system, is not permitted without written authority from the proprietor.  
FCI  
Property of FCI Electronics. Reproduction or issue to third parties in any form or by any means, electronic or mechanical, including photocopying, recording, or by any information storage and retrieval system, is not permitted without written authority from the proprietor.  
FCI  
Copyright FCI Electronics by

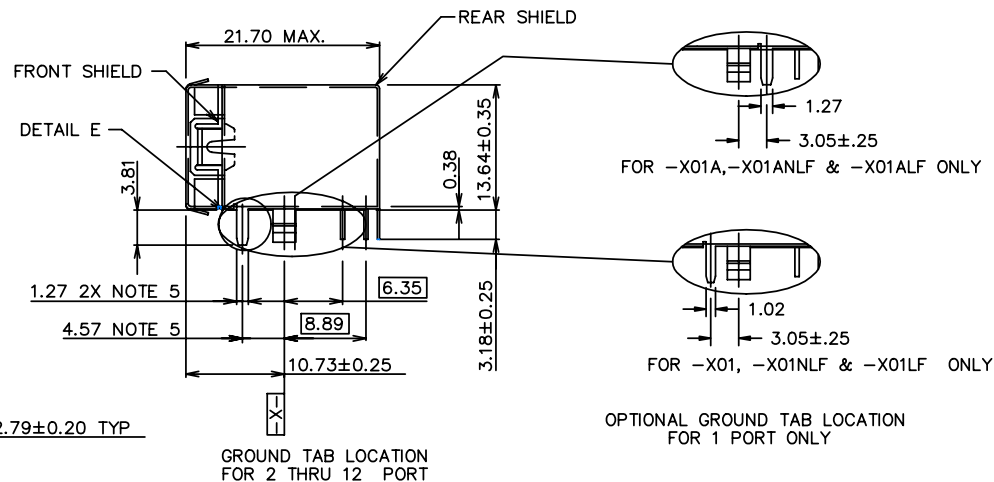
PRODUCT NO.  
SEE TABLE



DETAIL E  
SCALE: 3/1



THIS VIEW ONLY FOR 95678-X0100/LF  
WITH FRONT TONGUE  
NO GROUNDING TABS AND PEGS



mat'l code				tolerance unless otherwise specified		CUSTOMER COPY		FCI www.fciconnect.com	
rev	ecn no.	dr	date	linear	.0 $\pm 0.3$	projection	title	R/A CAT 5 GANG JACK ASSY 8 POS SHIELDED SNAP PEG	
H	V91501	CGC	6/30/99		.00 $\pm 0.13$				
J	V03-1103	PJ	10/23/03		.000 $\pm 0.05$			product family: MOD JACK	
K	N04-0101	MHT	1/12/05	angles	$\pm 2^\circ$				
L	N06-0225	LONG	8/25/06	dr	L.POTTIEGER	8/30/95	unit	size dwg no.	
M	N06-0289	LONG	12/06/06	engr	Y.BELOPOLSKY	8/30/95	mm		
N	N08-0100	SH	09/25/08	chr	Y.BELOPOLSKY	8/30/95	scale	A	
				appd	Y.BELOPOLSKY	8/30/95	1/1		
sheet	revision	M	L	J	K	J	K	95678	
index	sheet	1	2	3	4	5	6		
								213	
								1 OF 7	

Tous droits strictement réservés. Reproduction ou communication a des tiers int  
sous quelque forme que ce soit sans autorisation écrite du propriétaire.  
Property of c BERG ELECTRONICS.  
Copyright BERG ELECTRONICS by

FCI

B

C

D

1		2		3		4		5		6	
PRODUCT NO	PORTS NO	DIA A +.60 -.00	DIM B	DIM C±0.10	DIM D±0.15	GROUND LEG NUMBER ON THE BACK (VIEW B)					
95678-X01 95678-X01LF 95678-X01NLF 95678-X0100 95678-X0100LF	1	15.74	-	5.715	11.43	SEE DIAGRAM ON SHT. 3		NOTE 5			
95678-X01A 95678-X01ALF 95678-X01ANLF	1	15.74	-	5.715	11.43			NOTE 5			
95678-X02YZ 95678-X02YZLF 95678-X02NYZLF	2	30.98	13.97	12.700	25.40			NOTES:			
95678-X03YZ 95678-X03YZLF 95678-X03NYZLF	3	44.95	27.94	19.685	39.37			1. RECOMMENDED P.C.B THICKNESS 1.60 MM.			
95678-X04YZ 95678-X04YZLF 95678-X04NYZLF	4	58.92	41.91	26.670	53.34			2. HOUSING MAT'L: HIGH TEMP RESIN.			
95678-X05YZ 95678-X05YZLF 95678-X05NYZLF	5	72.89	55.88	33.655	67.31			3. CONTACTS: PHOS BRONZE ALLOY UNS-C51000, Ø 0.460 ROUND WIRE, PLATING SEE TABLE.			
95678-X06YZ 95678-X06YZLF 95678-X06NYZLF	6	86.86	69.85	40.640	81.28			④ SHIELD MATL: BRASS ALLOY, .25 MM THICK. SHIELD PLATING: -FOR 95678-X01 THRU 95678-X12YZ BRIGHT TIN LEAD, 100u"MIN OVER NICKEL.			
95678-X07YZ 95678-X07YZLF 95678-X07NYZLF	7	100.83	83.82	47.625	95.25			LEAD FREE OPTION: -FOR 95678-X01NLF THRU 95678-X12NYZLF NICKEL, 30u"MIN WITH SELECTIVE TIN ON SOLDER TAILS. SEE DETAIL E.			
95678-X08YZ 95678-X08YZLF 95678-X08NYZLF	8	114.80	97.79	54.610	109.22			-FOR 95678-X01LF THRU 95678-X12YZLF BRIGHT PURE TIN, 80u"MIN OVER NICKEL.			
95678-X09YZ 95678-X09YZLF 95678-X09NYZLF	9	128.77	111.76	61.595	123.19			⑤ SEE SIDE VIEW ON SHT. 1 FOR DETAILS.			
95678-X10YZ 95678-X10YZLF 95678-X10NYZLF	10	142.74	125.73	68.580	137.16			6. ALL DIMENSIONS IN MILLIMETER.			
95678-X11YZ 95678-X11YZLF 95678-X11NYZLF	11	156.71	139.70	75.565	151.13			⑦ COMPANY LOGO LOCATED IN THIS AREA.			
95678-X12YZ 95678-X12YZLF 95678-X12NYZLF	12	170.68	153.67	82.550	165.10			8. PART NUMBERS WITH LF IN THE END ARE LEAD FREE.			
								9. LEAD FREE STATEMENT: THIS PRODUCT MEETS EUROPEAN UNION DIRECTIVES AN OTHER COUNTRY REGULATION AS DESCRIBED IN GS-22-008.			
								10. THE HOUSING TEMPERATURE WITHSTAND EXPOSURE TO 260°C PEAK TEMPERATURE FOR 15 SECONDS IN A WAVE SOLDER APPLICATION WITH A 1.5 MM MINIMUM THICK CIRCUIT BOARD. SEE APPLICATION NOTES/PROCEDURES IF THEY ARE AVAILABLE.			
								⑪ EQUIVALENT THICKNESS Au AND GXT PLATING HAVE SAME FUNCTION AND THEY ARE ALTERNATIVE BY THE CUSTOEMR .			

PLATING CODE X	PLATING	FRONT SHIELD CODE Y	REAR SHIELD CODE Z
0	30u" G.X.T.	0 = STANDARD GRND. TABS	0 = STANDARD GRND. LEGS
1	15u" GOLD.	1 = NO GRND. TABS	1 = 1 GRND. LEG
3	30u" GOLD.		2 = ALL GRND. LEGS
5	50u" GOLD.		3 = NO GRND. LEGS

NOTE: PLEASE CHECK FOR AVAILABILITY, NOT ALL OPTIONS AVAILABLE.

mat'l code

tolerance unless otherwise specified

CUSTOMER COPY

FCI www.fciconnect.com

rev

ec

no

dr

date

linear

0 ± 0.3

00 ± 0.13

000± 0.05

angles

± 2°

dr

L.POTTIEGER

8/30/95

unit

mm

eng

Y.BELOPOLSKY

8/30/95

scale

1/1

chr

Y.BELOPOLSKY

8/30/95

app

Y.BELOPOLSKY

8/30/95

sheet

revision

index

sheet

projection

title

product family

MOD JACK

code

213

size

dwg no.

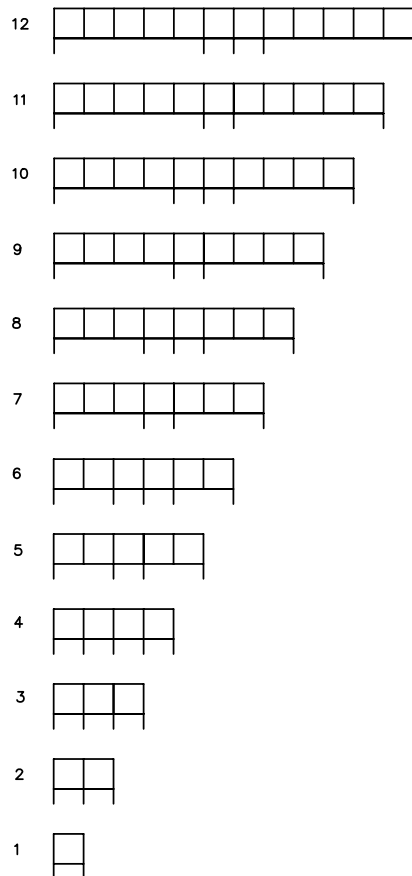
sheet

2 OF 7



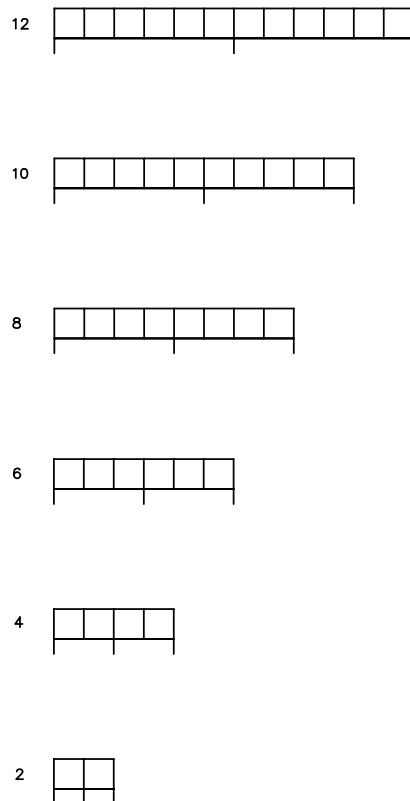
# REAR SHIELD (VIEWED FROM PLUG ENTRY SIDE) GROUND SOLDERTAIL CONFIGURATION

CODE "Z" = 0



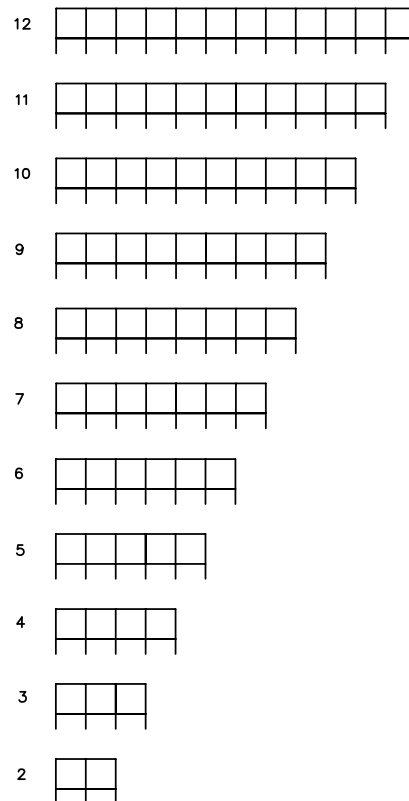
PCB LAYOUT SHEET 4

CODE "Z" = 1



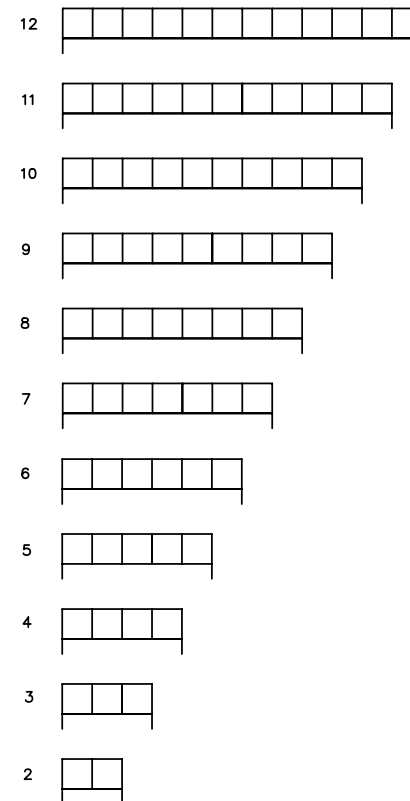
PCB LAYOUT SHEET 5

CODE "Z" = 2



PCB LAYOUT SHEET 6

CODE "Z" = 3



PCB LAYOUT SHEET 7

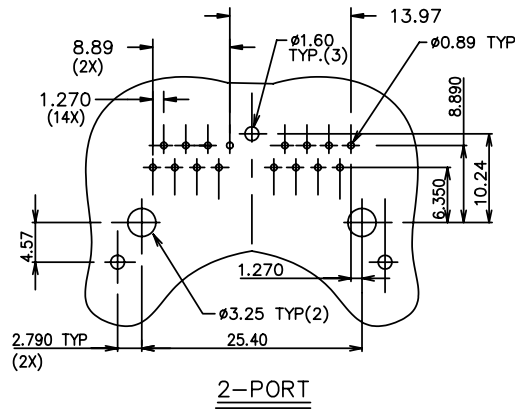
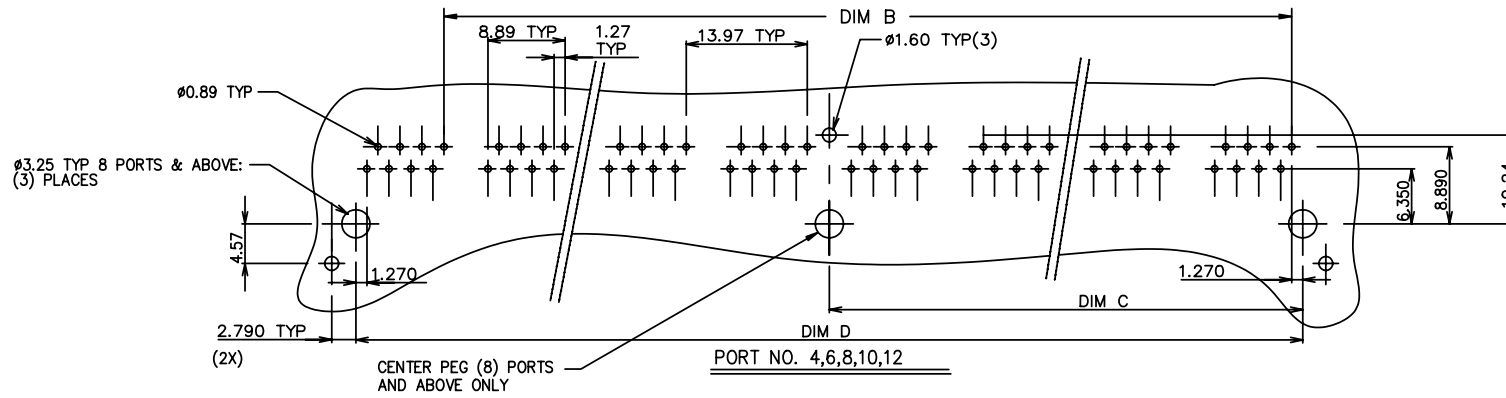
mat'l code		tolerance unless otherwise specified		CUSTOMER COPY		FCI www.fciconnect.com	
rev	ecn no.	dr	date	linear	.0 ± 0.3	projection	title
N					.00 ± 0.13		R/A CAT 5 GANG JACK ASSY
					.000± 0.05		8 POS SHIELDED SNAP PEG
				angles	± 2°		
				dr	L.POTTIEGER 8/30/95	unit	product family: MDD JACK
				engr	Y.BELOPOLSKY 8/30/95	mm	code
				chr	Y.BELOPOLSKY 8/30/95	scale	213
				app	Y.BELOPOLSKY 8/30/95	1/1	95678
sheet	revision						sheet
index	sheet						3 OF 7



Tous droits strictement réservés. Reproduction ou communication à des tiers sans autorisation écrite du propriétaire.  
Property of c BERG ELECTRONICS  
Droits de reproduction BERG ELECTRONICS


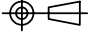


All rights strictly reserved. Reproduction or issue to third parties in any form without written authority from the proprietor.  
Property of c BERG ELECTRONICS.  
Copyright BERG ELECTRONICS by



## RECOMMENDED P.C.B LAYOUT

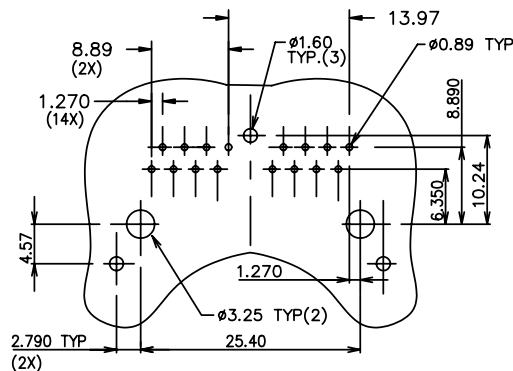
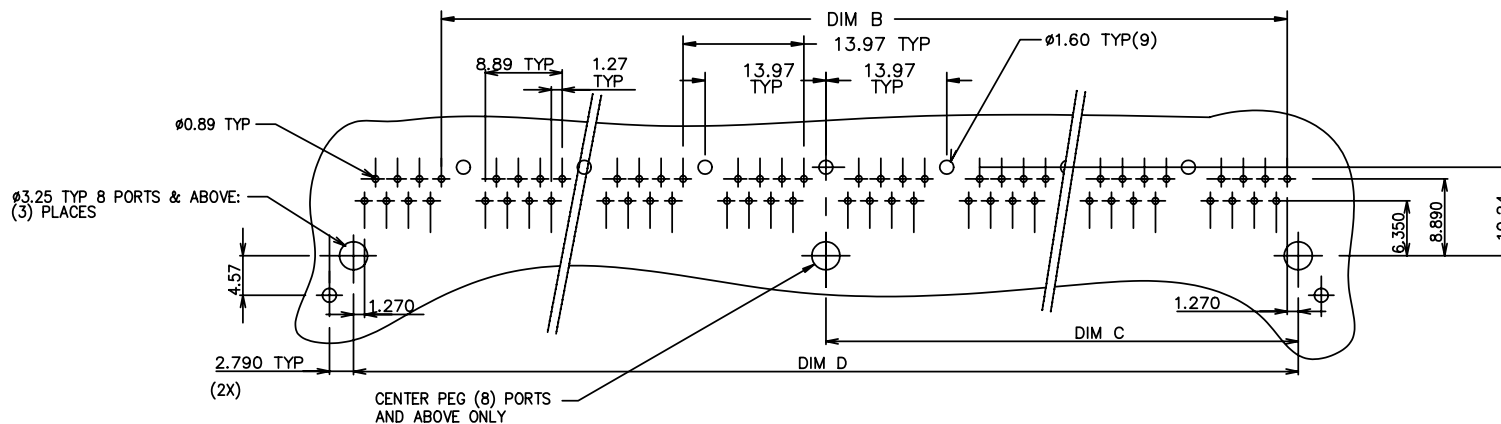
CODE "Z" = 1 (1 GROUND LEG)

mat'l code			tolerance unless otherwise specified		CUSTOMER COPY		www.fciconnect.com	
rev	ecn no.	dr	date	linear			title	
N				.00 ± 0.3		R/A CAT 5 GANG JACK ASSY 8 POS SHIELDED SNAP PEG	product family: MOD JACK	
				.000 ± 0.13			code	
				.000 ± 0.05	mm	scale	sheet	
				angles ± 2'			5 OF 7	
				dr LPOTTIEGER 8/30/95	unit	A	95678	
				engr Y.BELOPOLSKY 8/30/95			213	
				chr Y.BELOPOLSKY 8/30/95	scale	1/1	5 OF 7	
				appd Y.BELOPOLSKY 8/30/95				
sheet	revision							
index	sheet							

PDM: Rev:N

STATUS: Released

Printed: Feb 20, 2010



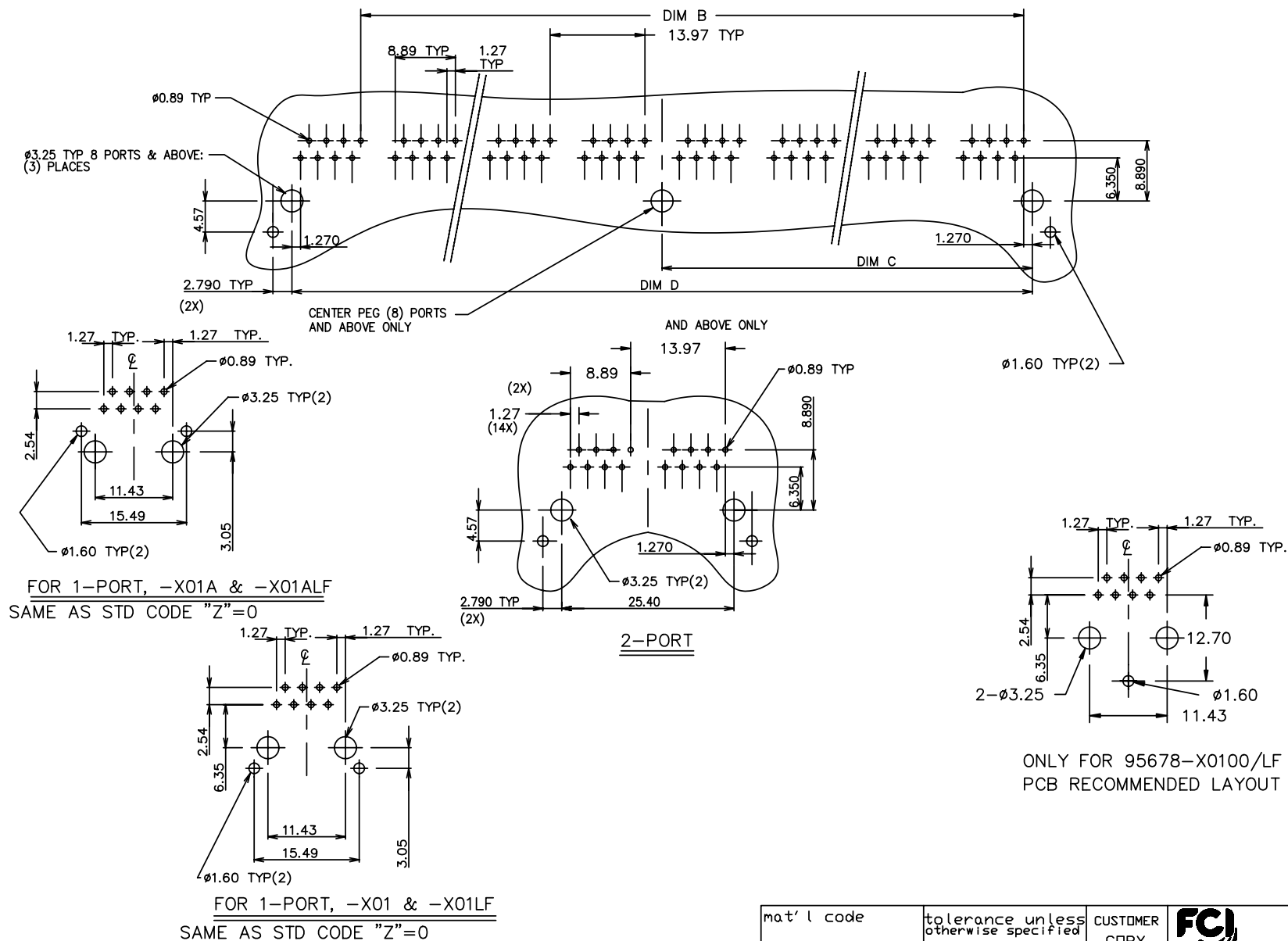
2-PORT

(SAME AS STANDARD CODE "Z"=0)

## RECOMMENDED P.C.B LAYOUT



CODE "Z" = 2 (ALL GROUND LEGS)

mat'l code		tolerance unless otherwise specified		CUSTOMER COPY		FCI www.fciconnect.com	
rev	ecn no.	dr	date	linear	.00 ± 0.13	projection	title
N				angles	.000 ± 0.05	⊕	R/A CAT 5 GANG JACK ASSY
					± 2"		8 POS SHIELDED SNAP PEG
				dr	LPOTTIEGER 8/30/95	unit	product family: MOD JACK
				engr	Y.BELOPOLSKY 8/30/95	mm	code
				chr	Y.BELOPOLSKY 8/30/95	scale	213
				appd	Y.BELOPOLSKY 8/30/95	1/1	sheet
sheet	revision						6 OF 7
index	sheet						



## RECOMMENDED P.C.B LAYOUT

CODE "Z" = 3 (NO GROUND LEGS)

mat'l code			tolerance unless otherwise specified			CUSTOMER COPY	 <a href="http://www.fciconnect.com">www.fciconnect.com</a>	
rev/ecn no.	dr	date	linear	$\pm 0 \pm 0.3$	projection title R/A CAT 5 GANG JACK ASSY 8 POS SHIELDED SNAP PEG 			
N				$\pm 0.00 \pm 0.13$				
				$\pm 0.00 \pm 0.05$				
			angles	$\pm 2'$				
			dr L.POTTIEGER	8/30/95	unit mm	product family: MOD JACK		code 213
			engr Y.BELOPOLSKY	8/30/95	scale	size dwg no.		sheet
			chr Y.BELOPOLSKY	8/30/95	1/1	A	95678	7 OF 7
			appd Y.BELOPOLSKY	8/30/95				
sheet revision								
index sheet								