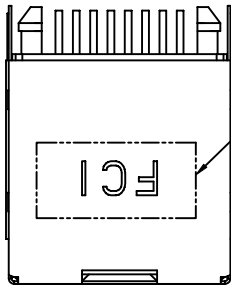


Tous droits strictement reserves. Reproduction ou communication a des tiers
interdite sous quelque forme que ce soit sans autorisation écrite du propriétaire.
Propriete de c FCI. Droits de reproduction FCI.

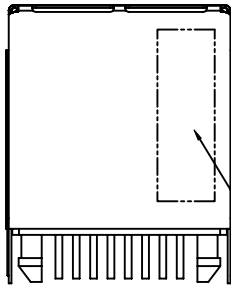
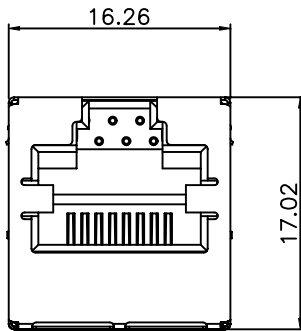
All rights strictly reserved. Reproduction or issue to third parties in any
form whatever is not permitted without written authority from the proprietor.
Property of Fci. Copyright FCI.



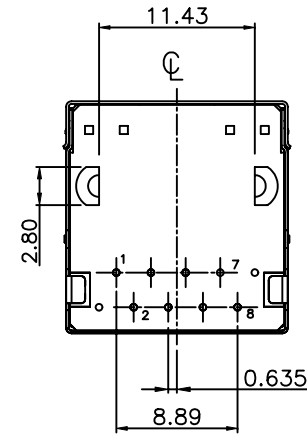
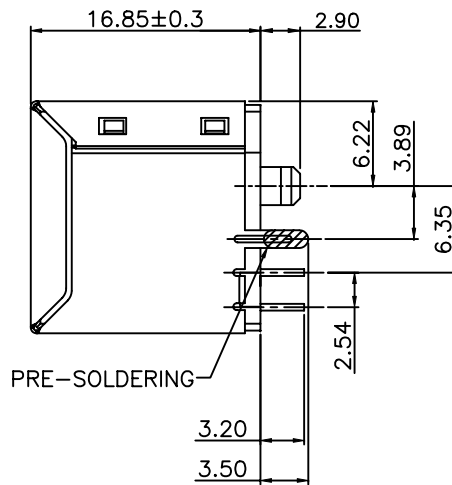
PART NO.
10085078-XXXLF



SEE NOTE 9



PRINT P/N & DATE CODE
SEE NOTE 10



mat'l. code				tolerances unless otherwise specified		CUSTOMER COPY		FCI www.fciconnect.com	
ltr	ecn no	dr	date	linear	.X ± 0.30	projection MM	title RJ45 1x1 STRAIGHT TYPE TRANSFORMER 10/100(8P)	product family JACK SERIES	code TWN
A	T08-1054	WL	03/26/08		.XX ± 0.20				
B	T09-1129	WL	09/29/09		.XXX ± 0.10				
				angles	0° ± 2°	scale A4	size 10085078	sheet 1 of 3	
				dr	WENDY CHEN 03/26/08				
				enr	WENDY CHEN 03/26/08				
				chr	WENDY CHEN 03/26/08	scale A4	size 10085078	sheet 1 of 3	
				appd	ALEX LIANG 03/26/08				
sheet index	revision sheet	B 1	B 2	B 3					

ACAD

PDM: Rev:B

STATUS Released
cage code 2526
Printed Oct 06, 2009

NOTES:

1. MATERIALS :

SHELL : STAINLESS STEEL, T=0.20mm
HOUSING: HIGH THERMOPLASTIC, UL 94V-0
RJ CONTACT : COPPER ALLOY, T=0.30mm
MODULE: PHENOLIC UL94V-0.
INPUT PIN: COPPER WIRE

2. PLATING

RJ CONTACT : 50u" MIN. NICKEL UNDER PLATED OVER ALL.
100u" MIN. MATTE TIN ON SOLDERING AREA.
SELECTIVE GOLD PLATED ON CONTACT AREA.

INPUT PIN: TIN COATED COPPER WIRE
SHELL : PRE-SOLDERING ON SHELL GROUNDING LEG

3. MECHANICAL CHARACTERISTICS :

INSERTION FORCE : 22N MAX.
REMOVAL FORCE(WITHOUT PLUG LOCK) : 22N MAX.
DURABILITY : 1000 TIMES

4. OPERATING TEMPERATURE : 0°C ~ 70°C

5. PRODUCT PERFORMANCE PER SPEC. : GS-12-535.

6. PACKING SPEC. : GS-14-1242.

7. THIS PRODUCT MEETS THE EUROPEAN UNION DIRECTIVE AS DESCRIBED IN GS-22-008.

8. THE HOUSING WILL WITHSTAND EXPOSURE TO 265°C PEAK TEMPERATURE FOR 5 SECONDS IN A WAVE SOLDER APPLICATION WITH A CIRCUIT BOARD.

9. "FCI" LOGO IS STAMPED ON THIS AREA.

10. "DATE CODE" DESCRIPTION:

XX XX
WEEK
YEAR (EX.: 08--2008)

11. PART NUMBER DESCRIPTION:

10085078-X X X LF

LED COLOR CODE:

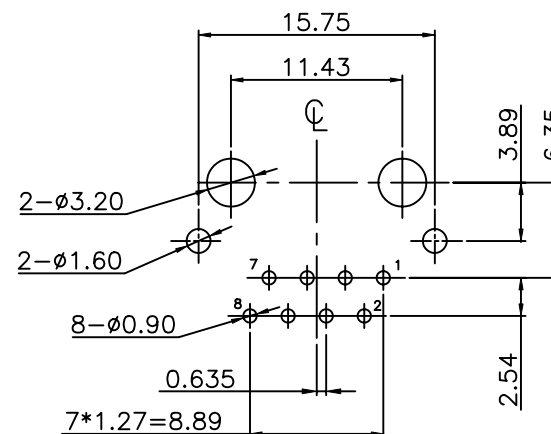
1: WITHOUT LED

TRANSFORMER SPEED :

0: 10/100 BASE-T
LED POLARITY: NORMAL
WITHOUT RESISTOR

RJ CONTACT AREA PLATING:

1 : 15u" GOLD



RECOMMENDED PCB LAYOUT (COMPONENT SIDE)
ALL DIMENSION TOLERANCE ARE $\pm 0.05\text{mm}$

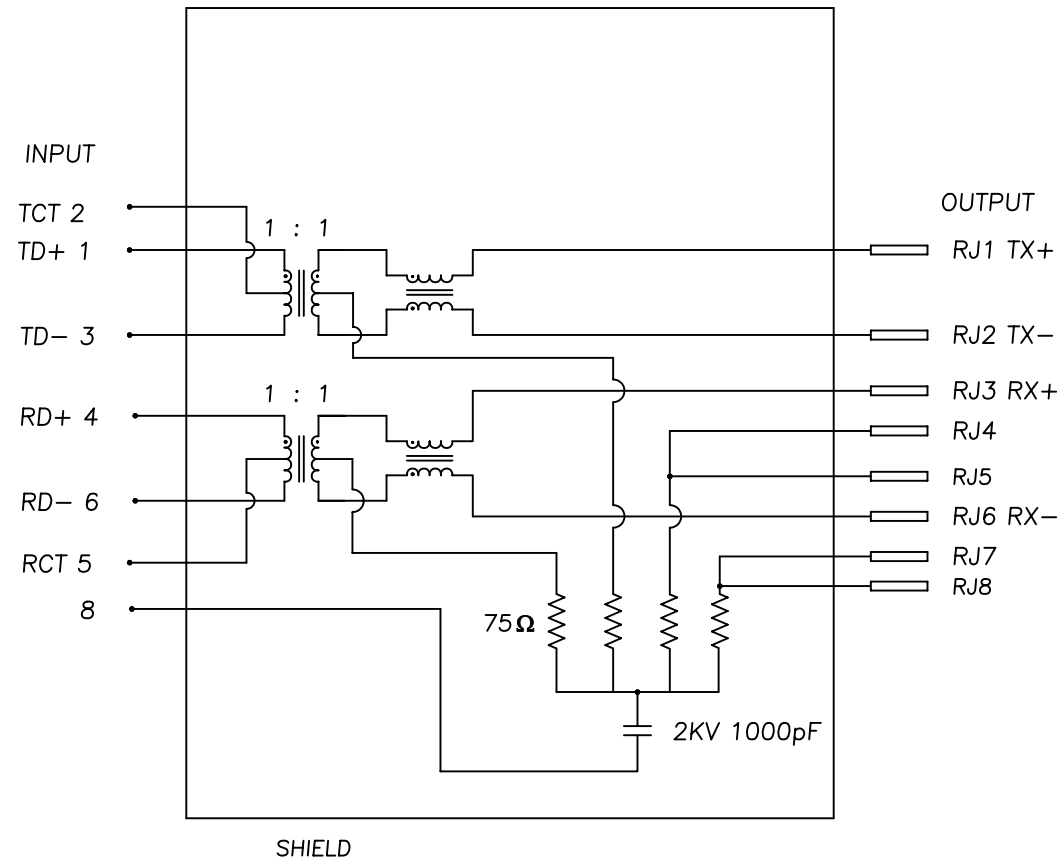
mat'l. code				tolerances unless otherwise specified		CUSTOMER COPY		FCI	
ltr	ecn no	dr	date	linear	.X \pm 0.30	projection	MM	title	www.fciconnect.com
B					.XX \pm 0.20				
					.XXX \pm 0.10				
				angles	0° \pm 2°	scale	A4	product family JACK SERIES	code TWN
				dr	WENDY CHEN 03/26/08				
				enr	WENDY CHEN 03/26/08				
				chr	WENDY CHEN 03/26/08	size	dwg no	10085078	sheet 2 of
				appd	ALEX LIANG 03/26/08				
sheet index	revision sheet								

Tous droits strictement reserves. Reproduction ou communication a des tiers interdite sous quelque forme que ce soit sans autorisation écrite du propriétaire. Propriete de c FCI. Droits de reproduction FCI.

All rights strictly reserved. Reproduction or issue to third parties in any form whatever is not permitted without written authority from the proprietor. Property of Fci. Copyright FCI.



ELECTRIC SCHEME



Transmitter & Receiver Filter:

1. Insertion Loss (dB MAX)
1~100MHz -1.0
2. Return Loss at 100W(dB MIN)
1~30MHz -18
30~60MHz -16
60~80MHz -12
3. Common Mode Rejection@ 1~100 MHz: -30dB MIN
4. Cross Talk@1~100 MHz: -35dB MIN
5. Inductance@100KHz/ 0.1V, 8mA DC BIAS: 350uH MIN
6. HiPot Test: 1500Vrms(or 2250VDC), 60sec
7. LED: Forward Voltage (V)@ 20mA
Typical :2.2 / MAX :2.6

mat'l. code				tolerances unless otherwise specified		CUSTOMER COPY		FCI	
ltr	ecn no	dr	date	linear	.X ± 0.30	projection		title	
B					.XX ± 0.20				
					.XXX ± 0.10				
				angles	0° ± 2°	MM		product family JACK SERIES	
				dr	WENDY CHEN 03/26/08				
				enr	WENDY CHEN 03/26/08				
				chr	WENDY CHEN 03/26/08	scale	A4	size dwg no	
				appd	ALEX LIANG 03/26/08				
sheet index	revision sheet							code	
								10085078	
								TWN	
								sheet 3 of	