

MICRO SWITCH
 FREEPORT, ILLINOIS, U.S.A.
 A DIVISION OF HONEYWELL
 FED. MFG. CODE 91929

**ASSEMBLY -
 TOGGLE SWITCH**

CATALOG LISTING
13AT272-T2-M

MILITARY P/N
 M8805 / 92-014

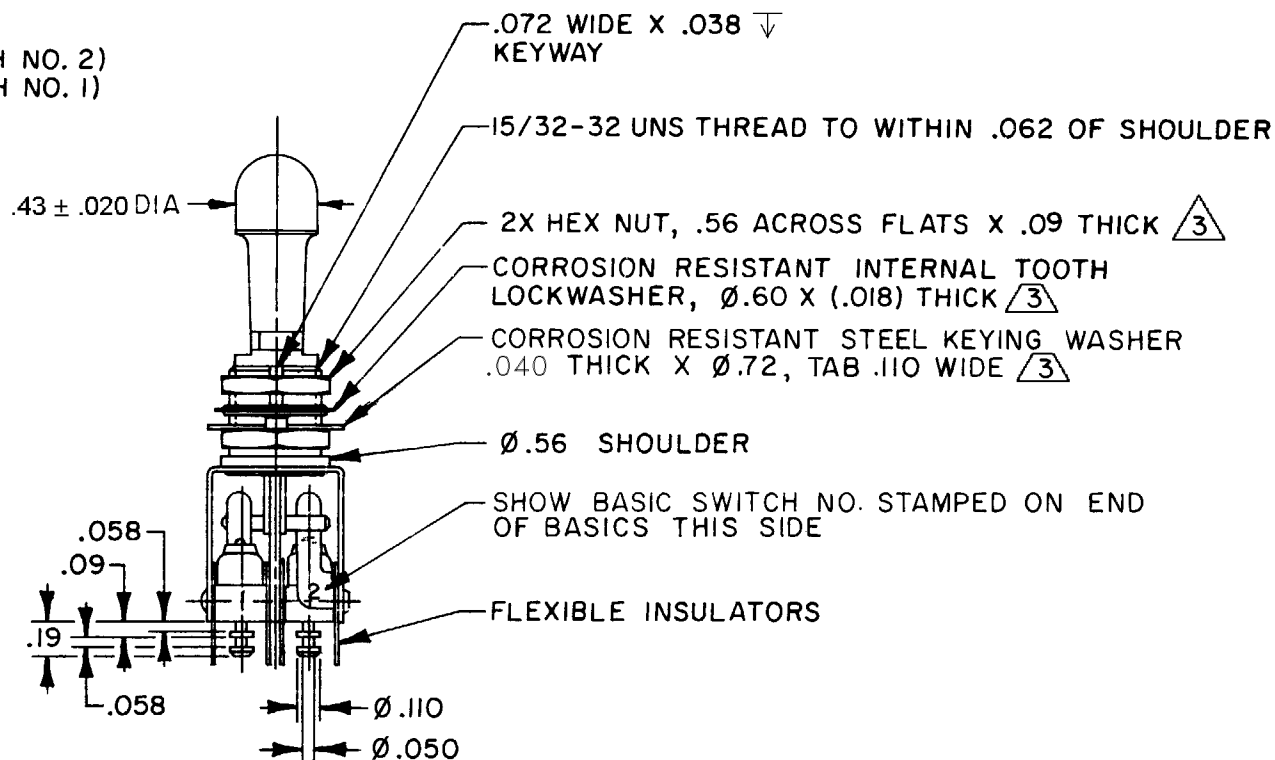
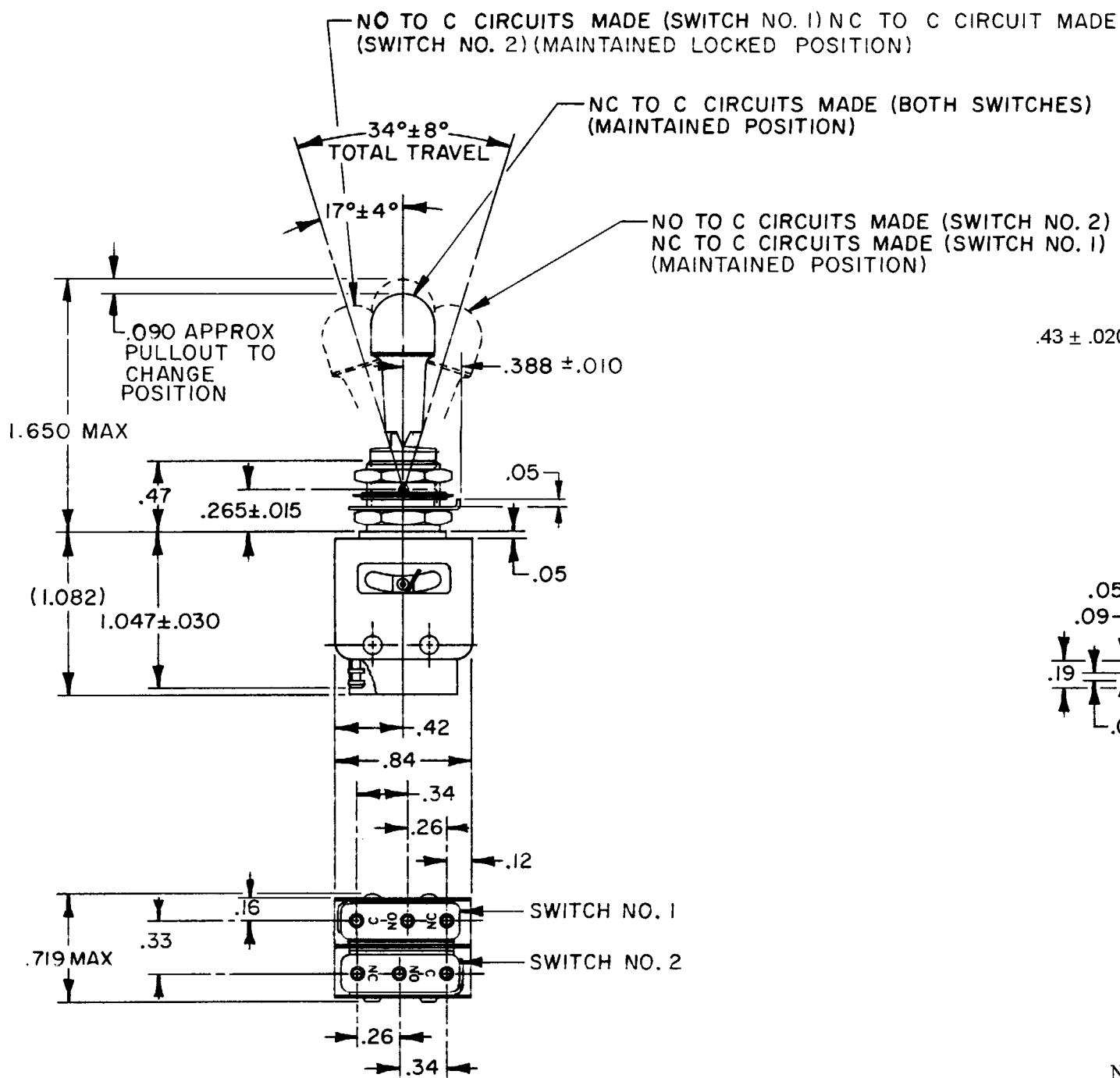
13AT272-T2-M
 PAGE 1 OF 1

M

DRAWING
 NUMBER

ISSUE
 10

REPLACES: PR-1630
 CHECK: 15OCT04
 AK
 CHECK: 23OCT98
 JAF
 CHECK: 29JUN84
 TSK



NOTES

- 1 - UNIT INCLUDES CAT. LIST. 21SM284-T2 BASIC SWITCH (MS25085-2) (2)
- 2 - TERMINALS ARE PLATED FOR SOLDERING
- (3) HARDWARE FURNISHED ASSEMBLED WITH SWITCH OR IN PACKET PER MIL-PRF-8805
- 4 - REPLACEMENT MOUNTING HARDWARE PACKET 15PA311-AT

ANSI Y14.5M-1982 APPLIES

THIS DRAWING COVERS A PROPRIETARY ITEM AND IS THE PROPERTY OF MICRO SWITCH, A DIVISION OF HONEYWELL. THIS DRAWING IS NOT TO BE COPIED OR USED WITHOUT THE APPROVAL OF MICRO SWITCH.

SCALE FULL

DO NOT SCALE PRINT

CHARACTERISTICS

ELECTRICAL DATA

CONTACT ARRANGEMENT
 S P D T (2)

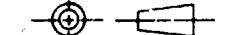
	SEA LEVEL	50,000 FT
LOAD	28 VDC	115 VAC
RESISTIVE	5	5
INDUCTIVE	3	5
LAMP	2.4	1.5
	2.4	2.4

APPLY TO DESIGN UNITS. CONVERSIONS ARE ONLY FOR REFERENCE. UNLESS NOTED, TOLERANCES ARE ±

DIM.	TOL.	DIM.	TOL.
mm	mm/in	in	mm/in
NO PLACES	X	1/04	
ONE PLACE	X,X	0.4/016	X,X
TWO PLACES	X,XX	0.157/006	X,XX
THREE PLACES	X,XXX		X,XXX
ANGLES			

DESIGN UNITS SI METRIC US CUSTOMARY

THIRD ANGLE PROJECTION



WEIGHT .06 LB

RASTER

DRAWN