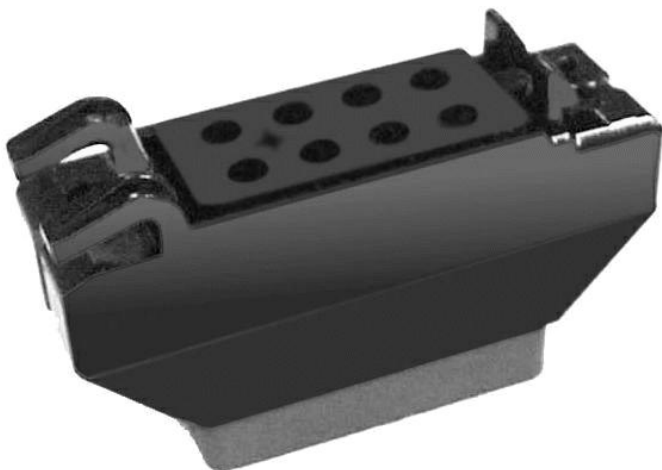


ENGINEERING DATA SHEET

SC30*, SC40*
SOCKET FOR 2 OR 4 POLE
10 AMP



2 POLE



4 POLE

SNAP AND LOCK SOCKET SERIES DESIGNATION FOR:

SERIES M300, M301, M302, M400, M401, M402, T402, T412

DESIGNED TO THE STANDARDS AND REQUIREMENTS OF:

2-pole, 10A relays
Mates with
4-pole, 10A relays
Mates with

MIL-PRF-12883/41
M83536, M83726 and MS27709
MIL-PRF-12883/40
M83536

FEATURES

Low profile
Bottom panel mount
Snaps into panel
Other models available

MATERIALS

Socket body
Grommet
Hardware
Contacts

Contact retainers

Polyetherimide per MIL-P-46184
Silicone rubber per ZZ-R-765
Stainless Steel
Copper alloy, hard gold plated
per MIL-G-45204
Beryllium copper

GENERAL CHARACTERISTICS

Insulation resistance	1000 M Ω min.
Dielectric withstanding voltage	1500 VRMS sea level; 500 VRMS at 25,000 m
Weight	15.3g max.
Temperature range	-65°C to +125°C
Vibration	MIL-STD-202, Method 204, Test Condition G
Shock	MIL-STD-202, Method 213, Test Condition C

This socket is designed to snap and lock into a panel to reduce hardware requirement and mounting time. Contacts and hardware are provided disassembled in a plastic bag. Standard tolerances are ± 0.025 mm unless otherwise noted.



Featuring **LEACH**® power and control solutions
www.esterline.com

AMERICAS
6900 Orangethorpe Ave.
P.O. Box 5032
Buena Park, CA 90622

Tel: (01) 714-736-7599
Fax: (01) 714-670-1145

EUROPE
2 Rue Goethe
57430 Sarrelbe
France

Tel: (33) 3 87 97 31 01
Fax: (33) 3 87 97 96 86

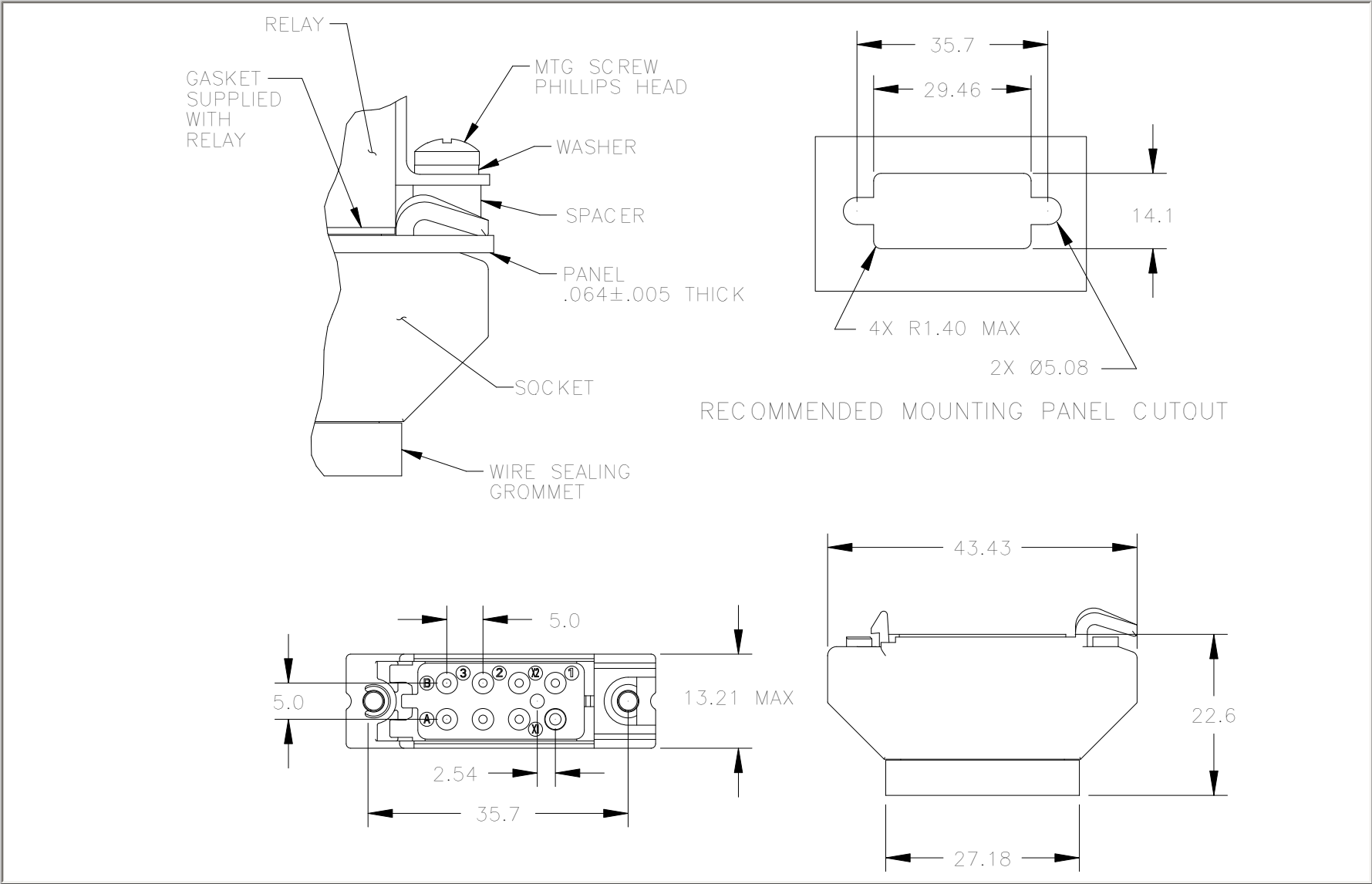
ASIA
Units 602-603 6/F Lakeside 1
No.8 Science Park West Avenue
Phase Two, Hong Kong Science Park
Pak Shek Kok, Tai Po, N.T.
Hong Kong

Tel: (852) 2 191 3830
Fax: (852) 2 389 5803

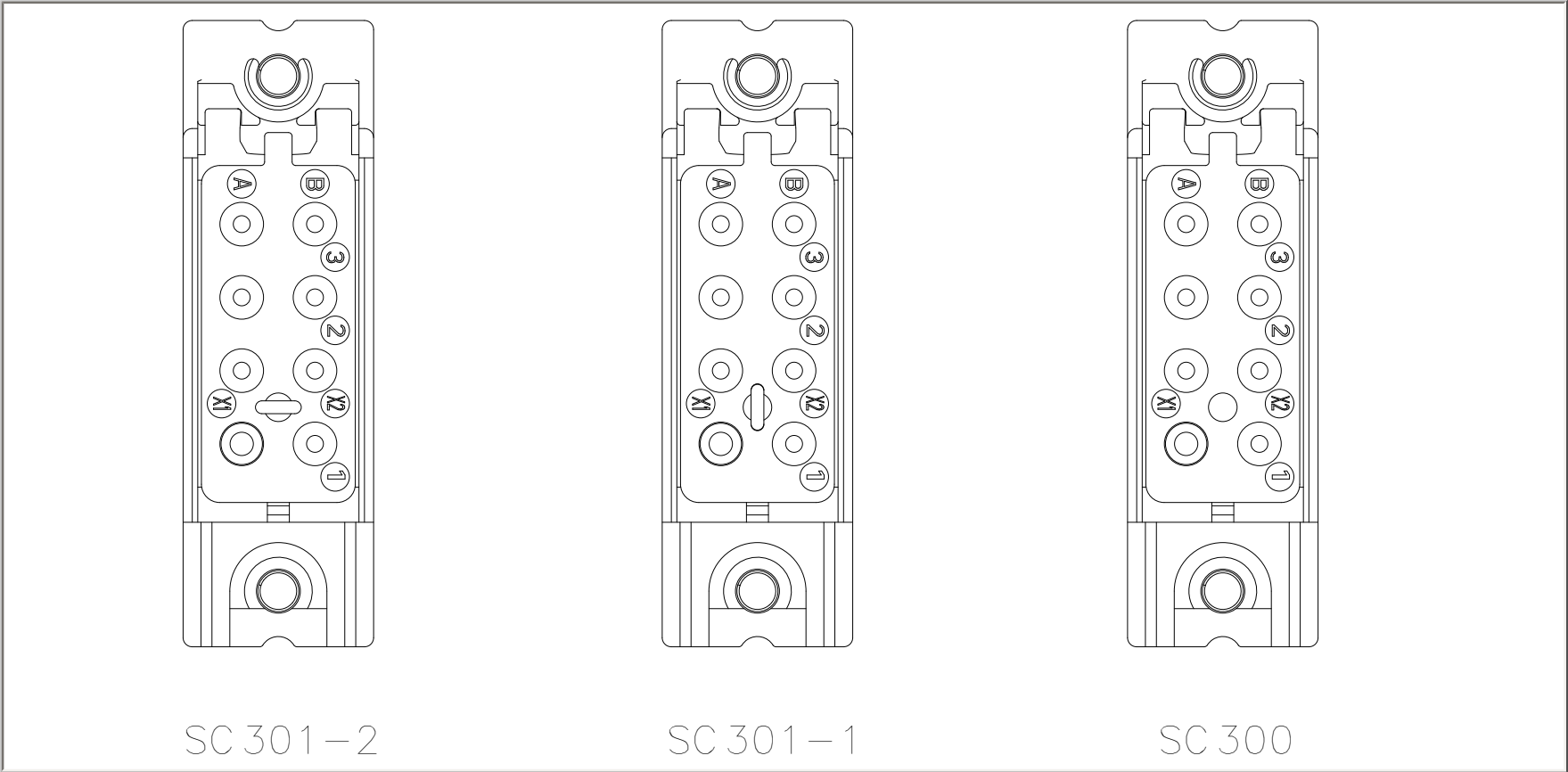
Data sheets are for initial product selection and comparison. Contact Esterline Power Systems prior to choosing a component.

SOCKET DIMENSIONS

SC30* (2 POLE)

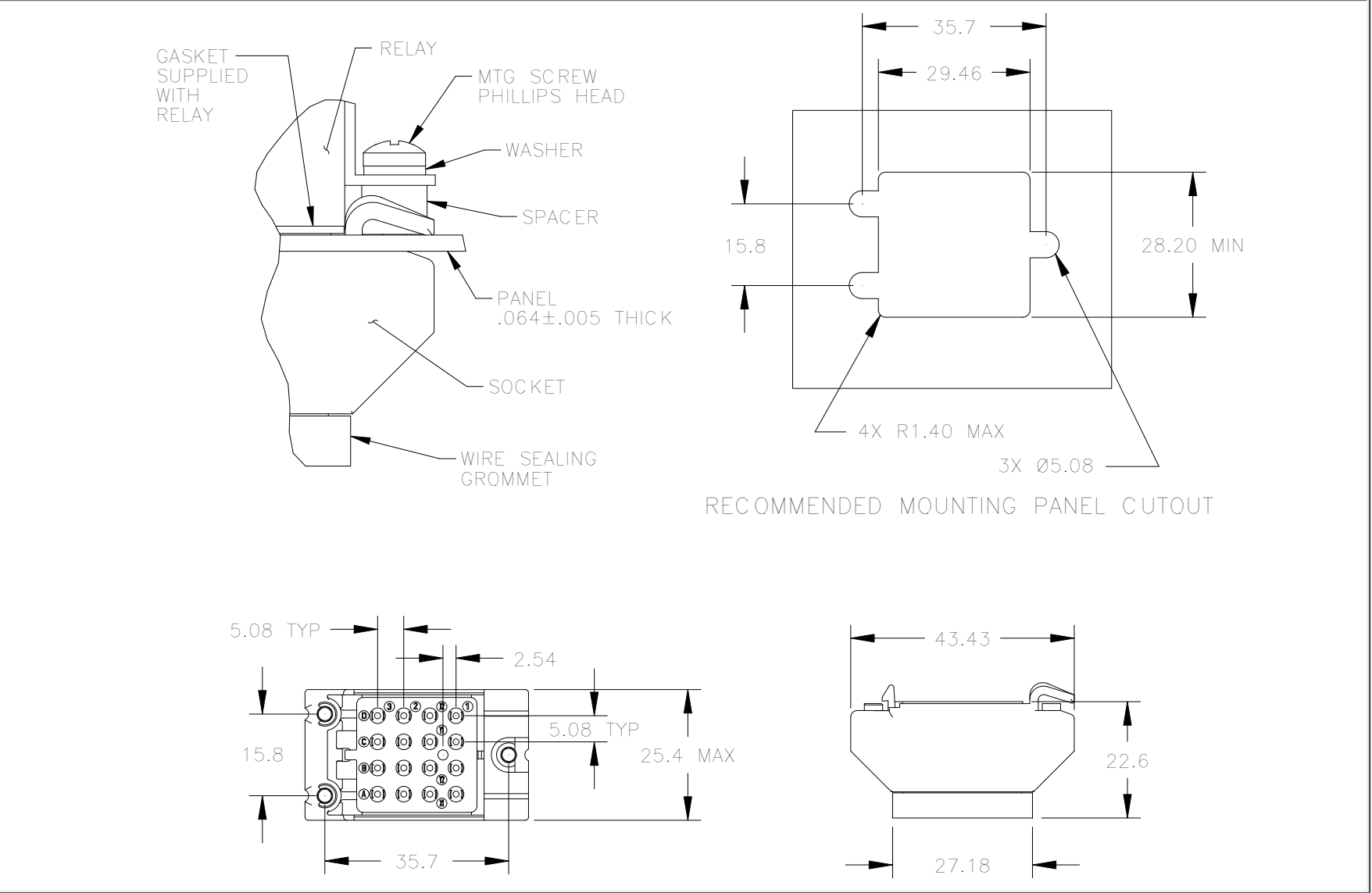


TERMINAL LAYOUT

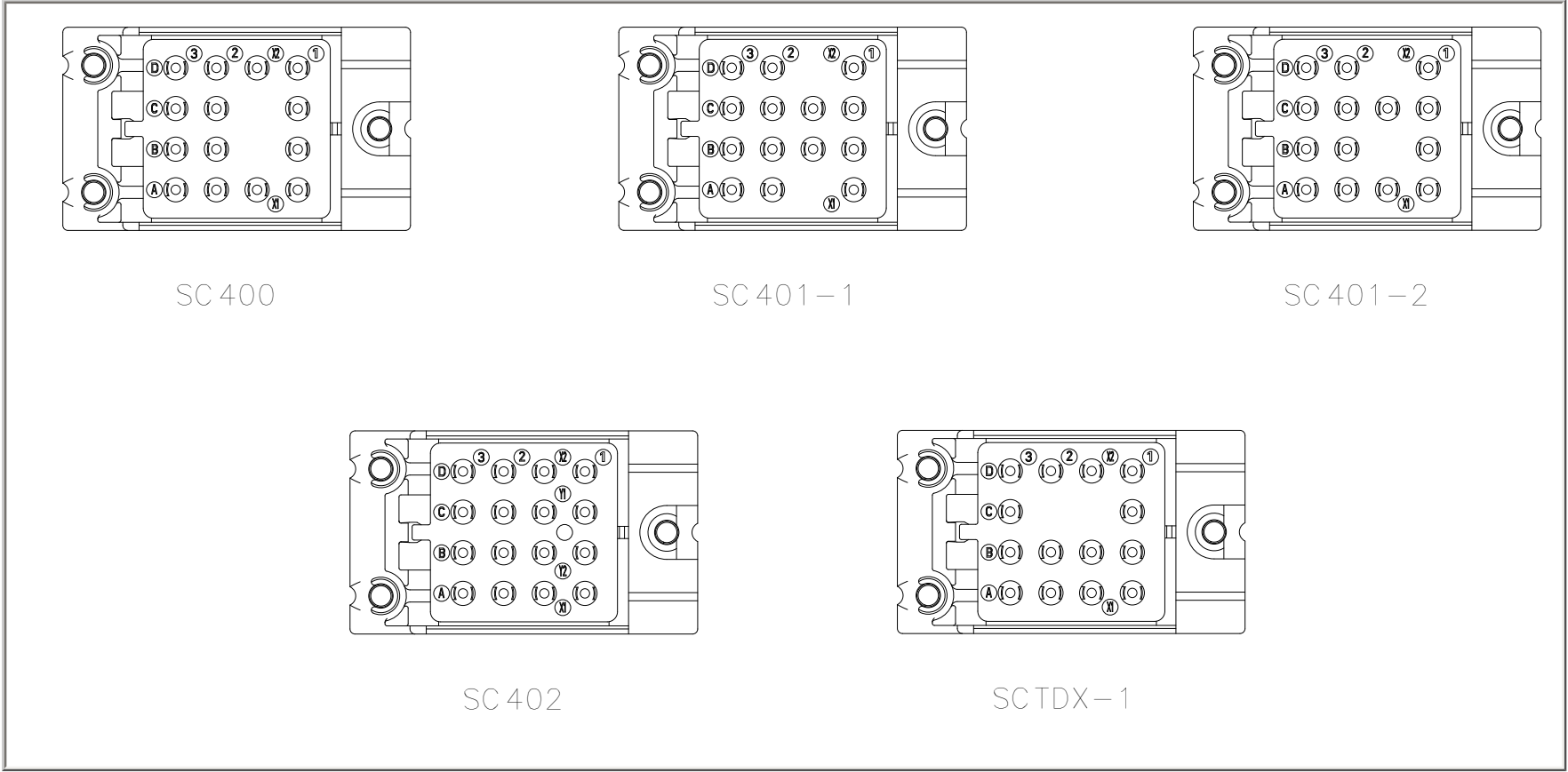


SOCKET DIMENSIONS

SC40* (4 POLE)



TERMINAL LAYOUT



	SC	300	01
1-Basic socket snap lock designation_____			
2-Mating relay (M300, M301, M302, M400, M401_____			
2-Hardware (0=less hardware, 1=with hardware)_____			
3-Contacts (0=less contacts, 1=with contacts)_____			