


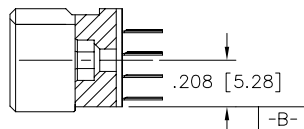
mat'l. code SEE NOTE 3			surface ISO 1302 ✓		tolerance ISO 406 ISO 1101		projection 		product family HPC		
ltr		ecn no		dr		date		tolerances unless otherwise specified		title	
G		V40886		GAH		7/22/94		.XX±.01/.3		4 ROW VERTICAL RECEPTABLE	
H		V41291		MDF		9/8/94		.xxx±.005/.13		SOLDER TO BOARD, 2 GUIDE PINS	
J		V50348		LSS		6/15/95		.xxxx±.0020/.05		scale 1:1	
K		V90651		HTB		4/8/99		dr S.ROYER 8/7/91		dwg no sheet 1 of 3 size	
L		V00258		JWS		1/21/00		enrg S.CLARK 8/7/91		50328 A.	
M		V05-0966		DAI		10/20/05		chr S.CLARK 8/14/91		type Product Customer Drawing	
N		M06-0260		MHT		7/07/06		appd S.CLARK 8/14/91			
sheet index		revision sheet		N		N		N			
				1		2		3			



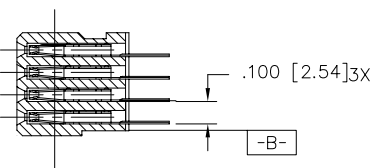
FCIconnect.com

Copyright FCI

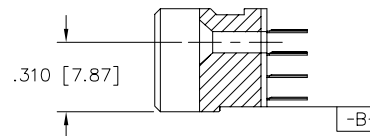
PRODUCT NUMBER
SEE TABLE



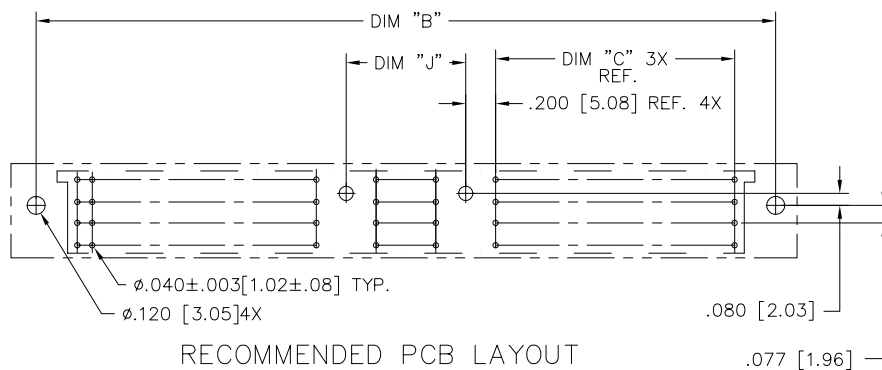
SECTION U-U



SECTION X-X



SECTION W-W



mat'l. code				surface ISO 1302 ✓	tolerance ISO 406 ISO 1101	projection INCH/MM	product family HPC
ltr	ecn no	dr	date	tolerances unless otherwise specified		scale 1:1 FCI	title
N				angles	linear .XX±.01/.3		4 ROW VERTICAL RECEPTACLE
				0°±2'	.xxx±.005/.13		SOLDER TO BOARD, 2 GUIDE PINS
					.xxx±.0020/.05		dwg no
				dr	S.ROYER 8/7/91		sheet 2 of 3 size
				enr	S.CLARK 8/7/91		50328 A3
				chr	S.CLARK 8/14/91		
				appd	S.CLARK 8/14/91		type Product Customer Drawing
sheet index	revision sheet						

form: A3

PRODUCT NUMBER	NUMBER OF POSITIONS SEE NOTE 2	TAIL LENGTH	CONTACT PLATING
50328-1YYYE	YYY	.125±.010/3.18±0.25	30u"/.76u Au
50328-1YYYF	YYY	.145±.010/3.68±0.25	30u"/.76u Au
50328-1YYYH	YYY	.180±.010/4.57±0.25	30u"/.76u Au
50328-1YYYZ	YYY	.220±.010/5.59±0.25	30u"/.76u Au
50328-3YYYE	YYY	.125±.010/3.18±0.25	50u"/1.25u Au
50328-3YYYF	YYY	.145±.010/3.68±0.25	50u"/1.25u Au
50328-3YYYH	YYY	.180±.010/4.57±0.25	50u"/1.25u Au
50328-3YYYZ	YYY	.220±.010/5.59±0.25	50u"/1.25u Au
50328-5YYYE	YYY	.125±.010/3.18±0.25	30u"/.76u GXT
50328-5YYYELF	YYY	.125±.010/3.18±0.25	30u"/.76u GXT
50328-5YYYF	YYY	.145±.010/3.68±0.25	30u"/.76u GXT
50328-5YYYFLF	YYY	.145±.010/3.68±0.25	30u"/.76u GXT
50328-5YYYH	YYY	.180±.010/4.57±0.25	30u"/.76u GXT
50328-5YYYHLF	YYY	.180±.010/4.57±0.25	30u"/.76u GXT
50328-5YYYZ	YYY	.220±.010/5.59±0.25	30u"/.76u GXT
50328-5YYYZLF	YYY	.220±.010/5.59±0.25	30u"/.76u GXT

NOTES:

① PRODUCT NUMBERING CODE:

50328 - X YYY Z LF

LEAD FREE (OPTIONAL)

TAIL LENGTH SEE TABLE

NO. OF POSITIONS SEE NOTE 2

PLATING SEE TABLE

BASE NUMBER

② THIS PRODUCT IS CONFIGURED IN SIZES OF
10 THRU 80 COLUMNS IN INCREMENTS OF ONE.
i.e.: 10,11,12,13,.....79,80.

③ HOUSING MATERIAL: GLASS AND MINERAL FILLED
HIGH TEMP. THERMOPLASTIC. FLAME RETARDANT
PER UL94V-0. COLOR: BLACK.
CONTACT MATERIAL: BeCu

④ MANUFACTURE'S NAME, P/N AND LOT CODE TO APPEAR
ON THIS SURFACE AS PER BUS-12-108.

⑤ LENGTH FORMULAS

DIM A= .100/2.54 X NO. OF COLUMNS + 1.35/34.3



DIM B= .100/2.54 X NO. OF COLUMNS + 1.050/26.67

DIM C= .100/2.54 X NO. OF COLUMNS DIVIDED BY 3 - .100/2.54

DIM J= .100/2.54 X NO. OF COLUMNS DIVIDED BY 3 - .300/7.62

6. THIS PRODUCT (WITH "LF" SUFFIX) MEETS EUROPEAN
UNION DIRECTIVES AND OTHER COUNTRY REGULATIONS
AS DESCRIBED IN GS-22-008.

7. THIS HOUSING WILL WITHSTAND EXPOSURE TO 260° C
PEAK TEMPERATURE FOR 10-30 SECONDS IN A CONVECTION
INFRA-RED OR VAPOR PHASE REFLOW OVEN.

mat'l. code				surface ISO 1302 ✓	tolerance ISO 406 ISO 1101	projection 	product family HPC
ltr	ecn no	dr	date	tolerances unless otherwise specified		INCH/MM scale 1:1 	title
N				angles	linear		4 ROW VERTICAL RECEP TTACLE
				0°±2'	.xxx±.005/.13 .xxx±.0020/.051		SOLDER TO BOARD, 2 GUIDE PINS
				dr	S.ROYER 8/7/91		dwg no
				enr	S.CLARK 8/7/91		sheet 3 of 3 size
				chr	S.CLARK 8/14/91		50328 A3
				appd	S.CLARK 8/14/91		type Product Customer Drawing
sheet index	revision sheet						

form: A3