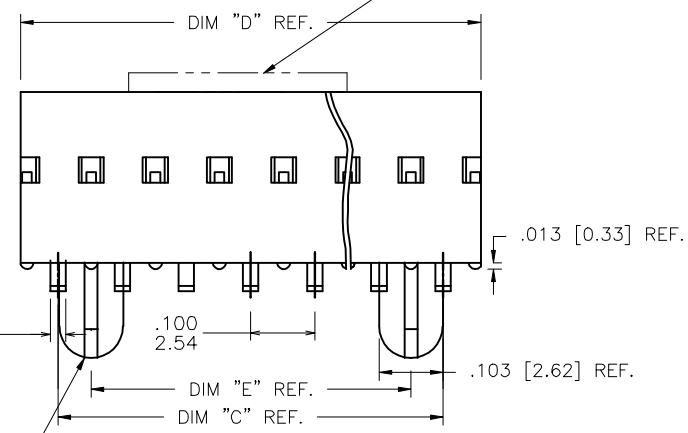
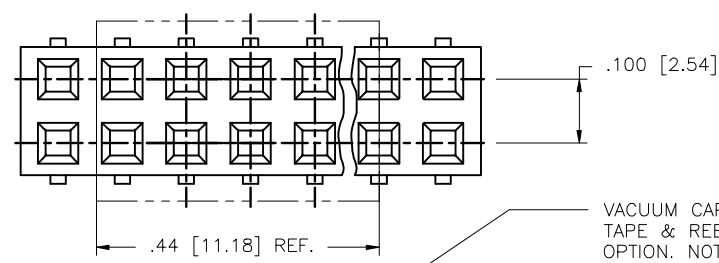


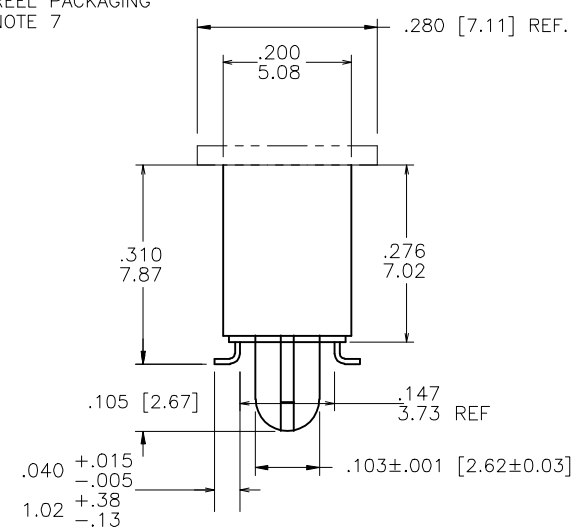
PRODUCT NO.
SEE TABLE

68622 - XXX 2 - LF
 LEAD FREE OPTION
 PACKAGING OPTION NOTE8. OMIT IF NOT REQUIRED.
 HOUSING WITH SMALL ROUND PEGS. OMIT IF NOT REQUIRED.
 SEE CONFIGURATION PAGE 3
 NO. OF POSITIONS PER ROW
 PLATING CODE
 BASE PART NUMBER

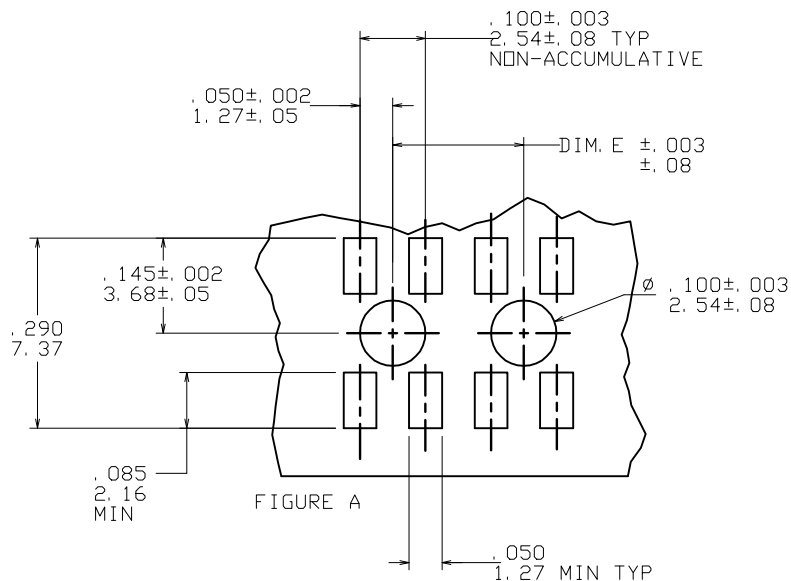


SEE PEG OPTION

VACUUM CAP FOR
TAPE & REEL PACKAGING
OPTION. NOTE 7



mat'l. code SEE NOTES 1, 3 & 7				Surface ISO 1302	tolerance ISO 406 ISO 1101	projection ISO 1302	product family DUBOX
ltr	ecn no	dr	date	tolerances unless otherwise specified		INCH/MM	title
P	V03-0309	HTB	4/28/03	angles	.XX±.01/XX±0.3		SMT DOUBLE ROW
R	V05-0463	DPU	06/28/05	linear	.XXX±.006/XX±0.13	scale 1:1	LATCHED VCC ASSEMBLY
S	M06-0237	MN	06/19/06	O'±2'	.XXX±.0020/XXX±0.051		dwg no
T	M06-0433	AGS	10/31/06	dr	J. SHREINER	12/18/90	sheet 1 of 5 size
U	M07-0203	AGS	05/02/07	engr	M. HAHN	12/18/90	68622 A3
V	M09-0032	MHT	02/25/09	chr	M. HAHN	12/18/90	
W	M09-0057	MHT	3/25/09	appd	M. HAHN	12/18/90	
sheet	revision	W	W	W	W	W	type
index	sheet	1	2	3	4	5	Product Customer Drawing



STANDARD PCB RECOMMENDED

NOTES:

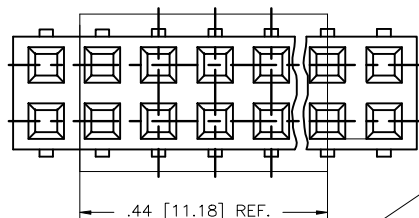
- ① MATERIAL TERMINAL: PHOSPHOR BRONZE, EXTRA HARD.
2. RECOMMENDED APPLICATION DATA:
 - A. RECOMMENDED SOLDER PAD PATTERN IS SHOWN IN FIGURE A.
 - B. ALL MATING PINS TO BE .025/.64 SQUARE ON TRUE CENTER OF GIVEN TERMINAL SPACING WITHIN .015/.38 DIA.
 - C. SUGGESTED MATING PIN LENGTH .210 ±.020/5.33 ±.51.
- ③ MATERIAL HOUSING: G.F. POLYESTER, COLOR: BLACK FLAME RETARDANT PER UL 94 -V0
THIS PART WILL WITHSTAND EXPOSURES TO 260°C PEAK TEMPERATURE FOR 20 SECONDS IN WAVE SOLDER, INFRA-RED OR VAPOR PHASE SOLDER PROCESS.
4. PRESTAMPED POST PLATED TERMINALS.
5. TAPE AND REEL PACKAGING PER GES-14-334.

6. TAPE AND REEL PACKAGING FOR 24mm WIDE AND BELOW HAVE PILOT HOLES ON ONE SIDE OF TAPE ONLY. SIZES ABOVE 24mm HAVE PILOT HOLES ON BOTH SIDES OF TAPE.
- ⑦ VACUUM PICK-UP CAP MATERIAL: L.C.P. FLAME RETARDANT PER UL 94V-0.
COLOR: BLACK
8. ADD SUFFIX "P" TO PART DASH NUMBER FOR TAPE AND REEL PACKAGING.
EXAMPLE: 68622-XXXX
9. MAXIMUM LENGTH OF CONNECTOR FOR TAPE AND REEL PACKAGING IS 2.50 INCHES LONG/63.5 MM.
10. TAPE & REEL PACKAGING 72mm WIDE TAPE WITH 16mm POCKET PITCH.
- ⑪ TAPE & REEL PACKAGING 88mm WIDE TAPE WITH 12mm POCKET PITCH.
12. FCI, FCI FINAL PART NUMBER AND DATE CODE TO BE MARKED ON TUBE LABEL.
- ⑬ ADD LF SUFFIX AT THE END OF PART NUMBER FOR LEAD FREE OPTION.
14. THIS PRODUCT MEETS EUROPEAN UNION DIRECTIVES AND OTHER COUNTRY REGULATION AS DESCRIBED IN GS-22-008.
- ⑮ PLATING OPTIONS:
MAY BE EITHER GOLD OR GXT PLATED AT MANUFACTURER'S OPTION.

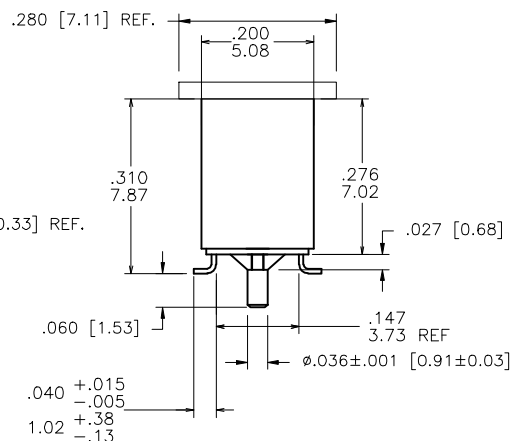
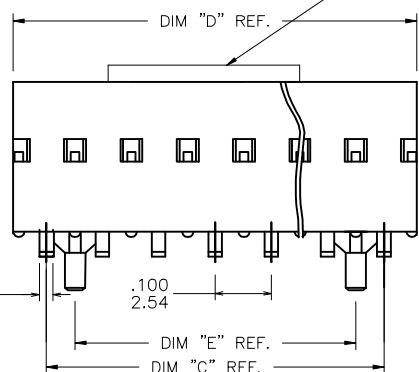
mat'l code SEE NOTES 1,3 & 7		surface ISO 1302 ISO 1301	tolerance ISO 406 ISO 1301	projection ISO 1302	product family DUBOX
ltr	ecp no	dr	date	tolerances unless otherwise specified	title
w				angles linear XX±.01/XX±0.3 XXX±.006/XXX±0.13 O'±2'	INCH/MM scale 1:1
				dr J. SHREINER 12/18/90	sheet 2 of 5 size A3
				engr M. HAHN 12/18/90	68622
				chr M. HAHN 12/18/90	type Product Customer Drawing
				appd M. HAHN 12/18/90	
sheet index	revision sheet				

PRODUCT NO NOTE 13	PLATING CONTACT AREA	PLATING SOLDER TAIL	MATERIAL REF.
68622-2XX	15u"/.38u Au MIN OVER 50u"/1.27u Ni MIN SEE NOTE 15	100u"/160u" Sn 2.54u/4.06u	NOTE 3 & 4
68622-3XX	30u"/.76u Au MIN OVER 50u"/1.27u Ni MIN SEE NOTE 15	100u"/160u" Sn 2.54u/4.06u	NOTE 3 & 4
68622-6XX	30u"/.76u Au MIN OVER 50u"/1.27u Ni MIN SEE NOTE 15	100u"/160u" Sn 2.54u/4.06u	NOTE 3 & 4

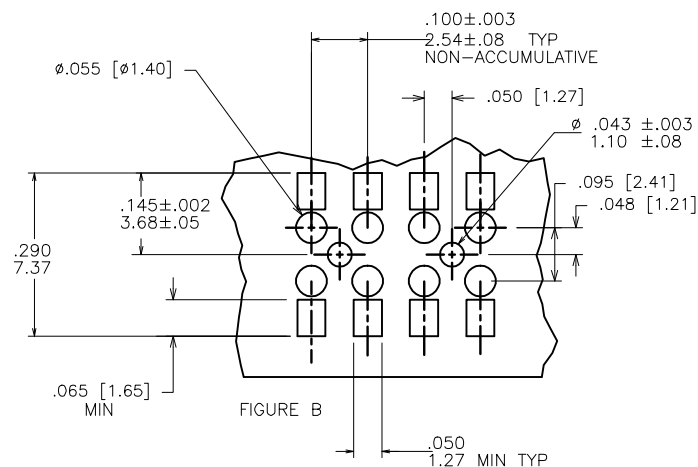
NOTE 13
NOTE 13
NOTE 13



VACUUM CAP FOR
TAPE & REEL PACKAGING
OPTION. NOTE 7



SMALL ROUND PEGS



SMALL ROUND PEGS
PCB RECOMMENDED

mat'l. code SEE NOTES 1, 3 & 7				surface ISO 1902	tolerance ISO 406 ISO 1101	projection INCH/MM	product family DUBOX
ltr	ecr no	dr	date	tolerances unless otherwise specified		scale 1:1	title SMT DOUBLE ROW LATCHED VCC ASSEMBLY
w				angles	linear		dwg no 68622
				0° ± 2°			sheet 3 of 5 size A3
dr	J. SHREINER		12/18/90	leng	M. HAHN	12/18/90	type Product Customer Drawing
chr	M. HAHN		12/18/90	appd	M. HAHN	12/18/90	
sheet index	revision sheet						



Copyright FCI

PRODUCT NO. NOTE 13		NO. OF POSITION	C DIM	D DIM	E DIM	TAPE & REEL PACKAGING
68622-Y04		2 X 4	. 300/7. 62	. 417/10. 59	. 200/ 5. 08	NO
-Y05		2 X 5	. 400/10. 16	. 517/13. 13	. 300/ 7. 62	NO
-Y06		2 X 6	. 500/12. 70	. 617/15. 67	. 400/10. 16	NO
-Y07		2 X 7	. 600/15. 24	. 717/18. 21	. 500/12. 70	NO
-Y08		2 X 8	. 700/17. 78	. 817/20. 75	. 600/15. 24	NO
-Y09		2 X 9	. 800/20. 32	. 917/23. 29	. 700/17. 78	NO
-Y10		2 X 10	. 900/22. 86	1. 017/25. 83	. 800/20. 32	NO
-Y11		2 X 11	1. 000/25. 40	1. 117/28. 37	. 900/22. 86	NO
-Y12		2 X 12	1. 100/27. 94	1. 217/30. 91	1. 000/25. 40	NO
-Y13		2 X 13	1. 200/30. 48	1. 317/33. 45	1. 100/27. 94	NO
-Y14		2 X 14	1. 300/33. 02	1. 417/35. 99	1. 200/30. 48	NO
-Y15		2 X 15	1. 400/35. 56	1. 517/38. 53	1. 300/33. 02	NO
-Y16		2 X 16	1. 500/38. 10	1. 617/41. 07	1. 400/35. 56	NO
-Y17		2 X 17	1. 600/40. 64	1. 717/43. 61	1. 500/38. 10	NO
-Y18		2 X 18	1. 700/43. 18	1. 817/46. 15	1. 600/40. 64	NO
-Y19		2 X 19	1. 800/45. 72	1. 917/48. 69	1. 700/43. 18	NO
-Y20		2 X 20	1. 900/48. 26	2. 017/51. 23	1. 800/45. 72	NO
-Y21		2 X 21	2. 000/50. 80	2. 117/53. 77	1. 900/48. 26	NO
-Y22		2 X 22	2. 100/53. 34	2. 217/56. 31	2. 000/50. 80	NO
-Y23		2 X 23	2. 200/55. 88	2. 317/58. 85	2. 100/53. 34	NO
-Y24		2 X 24	2. 300/58. 42	2. 417/61. 39	2. 200/55. 88	NO
68622-Y25		2 X 25	2. 400/60. 96	2. 517/63. 93	2. 300/58. 42	NO

NOTE 13

mat'l. code SEE NOTES 1,3 & 7				Surface ISO 1302	tolerance ISO 406 ISO 1101	projection	product family DUBOX
ltr	ecn no	dr	date	tolerances unless otherwise specified		 INCH/MM	title SMT DOUBLE ROW LATCHED VCC ASSEMBLY
w				angles	linear		
						scale 1:1	
				dr	J. SHREINER	12/18/90	dwg no 68622
				engr	M. HAHN	12/18/90	
				chr	M. HAHN	12/18/90	sheet 4 of 5 size A3
				appd	M. HAHN	12/18/90	
sheet	revision						type Product Customer Drawing
index	sheet						



Copyright FCI

PRODUCT NO. NOTE 13		NO. OF POSITION	C DIM	D DIM	E DIM	TAPE & REEL PACKAGING	LF OPTIONS
68622-Y26		2 X 26	2. 500/63. 50	2. 617/66. 47	2. 400/60. 96	NO	NOTE 13
	-Y27	2 X 27	2. 600/66. 04	2. 717/69. 01	2. 500/63. 50	NO	
	-Y28	2 X 28	2. 700/68. 58	2. 817/71. 55	2. 600/66. 04	NO	
	-Y29	2 X 29	2. 800/71. 12	2. 917/74. 09	2. 700/68. 58	NO	
	-Y30	2 X 30	2. 900/73. 66	3. 017/76. 63	2. 800/71. 12	NO	
	-Y31	2 X 31	3. 000/76. 20	3. 117/79. 17	2. 900/73. 66	NO	
	-Y32	2 X 32	3. 100/78. 74	3. 217/81. 71	3. 000/76. 20	NO	
	-Y33	2 X 33	3. 200/81. 28	3. 317/84. 25	3. 100/78. 74	NO	
	-Y34	2 X 34	3. 300/83. 82	3. 417/86. 79	3. 200/81. 28	NO	
	-Y35	2 X 35	3. 400/86. 36	3. 517/89. 33	3. 300/83. 82	NO	
	-Y36	2 X 36	3. 500/88. 90	3. 617/91. 87	3. 400/86. 36	NO	
	-Y37	2 X 37	3. 600/91. 44	3. 717/94. 41	3. 500/88. 90	NO	
	-Y38	2 X 38	3. 700/93. 98	3. 817/96. 95	3. 600/91. 44	NO	
	-Y39	2 X 39	3. 800/96. 52	3. 917/99. 49	3. 700/93. 98	NO	
	-Y40	2 X 40	3. 900/99. 06	4. 017/102. 03	3. 800/ 96. 52	NO	
	-Y41	2 X 41	4. 000/101. 60	4. 117/104. 57	3. 900/99. 06	NO	
	-Y42	2 X 42	4. 100/104. 14	4. 217/107. 11	4. 000/101. 60	NO	
	-Y43	2 X 43	4. 200/106. 68	4. 317/109. 65	4. 100/104. 14	NO	
	-Y44	2 X 44	4. 300/109. 22	4. 417/112. 19	4. 200/106. 68	NO	
	-Y45	2 X 45	4. 400/111. 76	4. 517/114. 73	4. 300/109. 22	NO	
	-Y46	2 X 46	4. 500/114. 30	4. 617/117. 27	4. 400/111. 76	NO	
	-Y47	2 X 47	4. 600/116. 84	4. 717/119. 81	4. 500/114. 30	NO	
	-Y48	2 X 48	4. 700/119. 38	4. 817/122. 35	4. 600/116. 84	NO	
	-Y49	2 X 49	4. 800/121. 92	4. 917/124. 89	4. 700/119. 38	NO	
68622-Y50		2 X 50	4. 900/124. 46	5. 017/127. 43	4. 800/121. 92	NO	
68622-Y25P		2 X 25	2. 400/60. 96	2. 517/63. 93	2. 300/58. 42	YES	

NOTES 7&11

mat'l. code SEE NOTES 1,3 & 7				Surface ISO 1302 <input checked="" type="checkbox"/>		tolerance ISO 1101		projection 		product family DUBOX	
ltr	ecp no	dr	date	tolerances unless otherwise specified							
w				angles	linear	XX±.01/XX±.03		INCH/MM		title SMT DOUBLE ROW	
						XXX±.005/XX±.013				LATCHED VCC ASSEMBLY	
				0'±2'		XXX±.0020/XXX±.0051		scale 1:1		dwg no 68622	
				dr	J. SHREINER	12/18/90				sheet 5 of 5 size A3	
				engr	M. HAHN	12/18/90					
				chr	M. HAHN	12/18/90					
				appd	M. HAHN	12/18/90				type Product Customer Drawing	
sheet index	revision sheet										