

| TABLE 1 |                 |             |             |                |                |                |
|---------|-----------------|-------------|-------------|----------------|----------------|----------------|
| STYLE   | TAIL/OPTION     | "A"         | "B"         | TERMINAL #1    | TERMINAL #2    | TERMINAL #3    |
| -01     | -RA             | .103 [2.62] | .126 [3.20] | T-1S13-02-XX-2 | T-1S13-03-XX-2 | T-1S13-17-XX-2 |
| -01     | -FC             | .139 [3.53] | .126 [3.20] | T-1S13-19-XX-2 | T-1S13-22-XX-2 | N/A            |
| -01     | RA W/END SHROUD | .139 [3.53] | .126 [3.20] | T-1S13-19-XX-2 | T-1S13-22-XX-2 | N/A            |
| -01     | *-FE            | .287 [7.29] | .126 [3.20] | T-1S13-22-XX-2 | T-1S13-28-XX-2 | N/A            |
| -04     | -RA             | .100 [2.54] | .075 [1.91] | T-1S13-20-XX-2 | T-1S13-08-XX-2 | N/A            |
| -04     | -FC             | .150 [3.81] | .075 [1.91] | T-1S13-02-XX-2 | T-1S13-03-XX-2 | N/A            |
| -04     | RA W/END SHROUD | .150 [3.81] | .075 [1.91] | T-1S13-02-XX-2 | T-1S13-03-XX-2 | N/A            |
| -05     | -RA             | .090 [2.29] | .085 [1.65] | T-1S13-07-XX-2 | T-1S13-13-XX-2 | N/A            |
| -05     | -FC             | .160 [4.06] | .085 [1.65] | T-1S13-02-XX-2 | T-1S13-03-XX-2 | N/A            |
| -05     | RA W/END SHROUD | .160 [4.06] | .085 [1.65] | T-1S13-02-XX-2 | T-1S13-03-XX-2 | N/A            |

NOTES:

- PARTS MAY BE CUT TO POSITION.
- MEASURED AT BEND RADIUS, NOT AT END OF PIN.
- GOLD PLATING TO BE ON POST, TIN PLATING ON TAIL.
- (C) REPRESENTS A CRITICAL DIMENSION.
- MINIMUM PUSHOUT FORCE: 1.0 LB.
- NOTE DELETED.
- MAX CUT FLASH TO BE .020.

TMMH-1XX-XX-XX-X-XX-XX-XXX

No. OF POSITIONS  
 -02 THRU -50  
 (PER ROW)

LEAD STYLE

- 01: .126 [3.20]
- 04: .075 [1.91]
- 05: .085 [1.65] MIN (SEE TABLE 1)

POLARIZATION

SPECIFY POS -XXX TO BE OMITTED

SHROUD OPTION: (AVAILABLE ON -D ROW OPTION ONLY)

- ES: END SHROUDS (SEE FIG. 2 - SHT 2, 9 POS MIN) (NOT AVAILABLE WITH -FC TAIL OPTION)
- EP: GUIDE POST (SEE FIG. 4 - SHT 2, 9 POS MIN) (NOT AVAILABLE WITH -FC TAIL OPTION)
- EL: BOARD LOCK (SEE FIG. 3 - SHT 2, 9 POS MIN) (NOT AVAILABLE WITH -FC TAIL OPTION)

TAIL OPTION

- RA: RIGHT ANGLE
- FC: FLEX CARD (RIGHT ANGLE; -D ROW OPTION ONLY).
- FE: ELEVATED FLEX CARD (RIGHT ANGLE; -D ROW OPTION ONLY).

ROW OPTION

- D: DOUBLE (USE TMMH-XX-D-X)
- T: TRIPLE (USE TMMH-XX-T-X) (AVAILABLE WITH -01 LEAD STYLE ONLY).

\* = TAIL OPTION TO BE USED ON RIGHT ANGLE ONLY

PLATING SPECIFICATION

- L: LIGHT SELECTIVE GOLD (USE T-1S13-XX-L-2)
- F: FLASH GOLD (USE T-1S13-XX-F-2)
- S: SELECTIVE GOLD (USE T-1S13-XX-S-2)
- G: GOLD (USE T-1S13-XX-G-2)
- T: TIN (USE T-1S13-XX-T-2)
- H: HEAVY GOLD (USE T-1S13-XX-H-2)
- TM: MATTE TIN (USE T-1S13-XX-T-2)
- LM: LIGHT SELECTIVE GOLD/MATTE TIN TAIL (USE T-1S13-XX-L-2)
- FM: FLASH GOLD/MATTE TIN TAIL (USE T-1S13-XX-F-2)
- SM: SELECTIVE GOLD/MATTE TIN TAIL (USE T-1S13-XX-S-2)

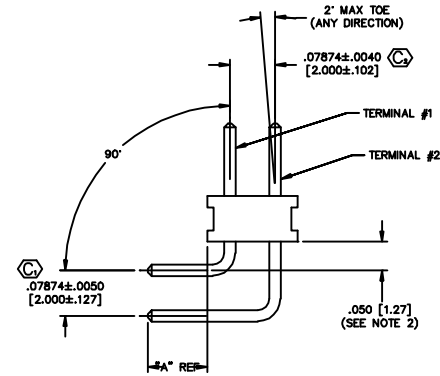
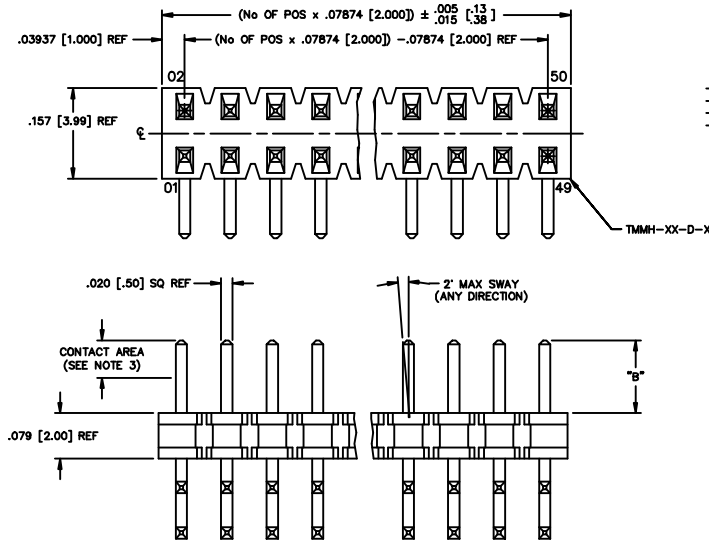


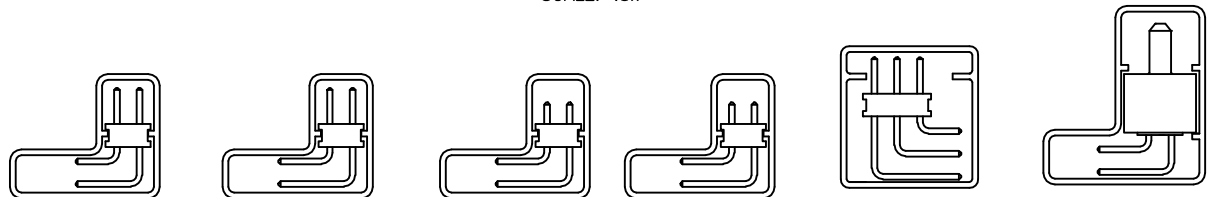
FIG. 1

DO NOT SCALE FROM THIS PRINT

PACKAGING VIEW

\* ONLY TUBE POSITIONS -05 THROUGH -50

SCALE: .5x



-01-RA  
 PT-TMMH-003-RA  
 TP-03 : FOR -EX OPTIONS  
 USE PT-1-24-01-45 TP-07

-01-FC  
 PT-TMMH-003-RA  
 TP-03

-04-RA, -05-RA  
 PT-TMMH-003-RA  
 TP-03

-04-FC, -05-FC  
 PT-TMMH-003-RA  
 TP-03

-01-T-RA  
 PT-1-24-09F-109  
 TP-29

-01/04/05-RA/FE-EX  
 PT-TMMH004-RA-EX  
 TP-07

PROPRIETARY NOTE  
 THE FOLLOWING INFORMATION IS UNCLASSIFIED AND PUBLIC RELEASE IS AUTHORIZED EXCEPT WHERE SHOWN OTHERWISE. IT IS THE PROPERTY OF SAMTEC AND IS NOT TO BE REPRODUCED OR TRANSMITTED IN ANY FORM OR BY ANY MEANS, ELECTRONIC OR MECHANICAL, INCLUDING PHOTOCOPYING, RECORDING, OR BY ANY INFORMATION STORAGE AND RETRIEVAL SYSTEM, WITHOUT THE WRITTEN PERMISSION OF SAMTEC.

**samtec**

520 PARK EAST BLVD., NEW ALBANY, INDIANA 47150  
 PHONE (812) 944-6733 P.O. BOX 1147  
 CODE 55322

MADE BY: PURVIS 12-17-96

TMMH-1XX-XX-XX-X-XX-XX-XXX  
 SHEET 1 OF 2