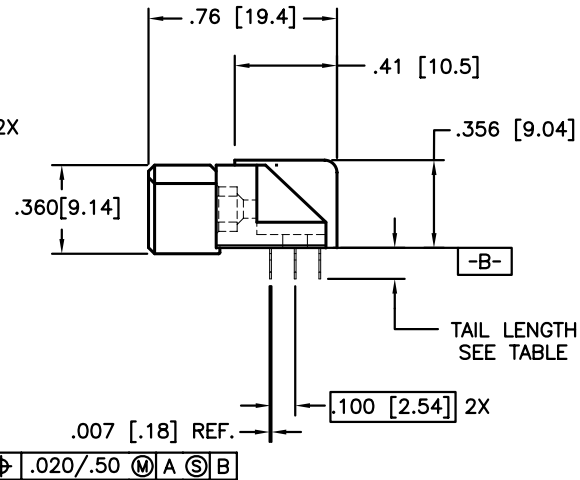
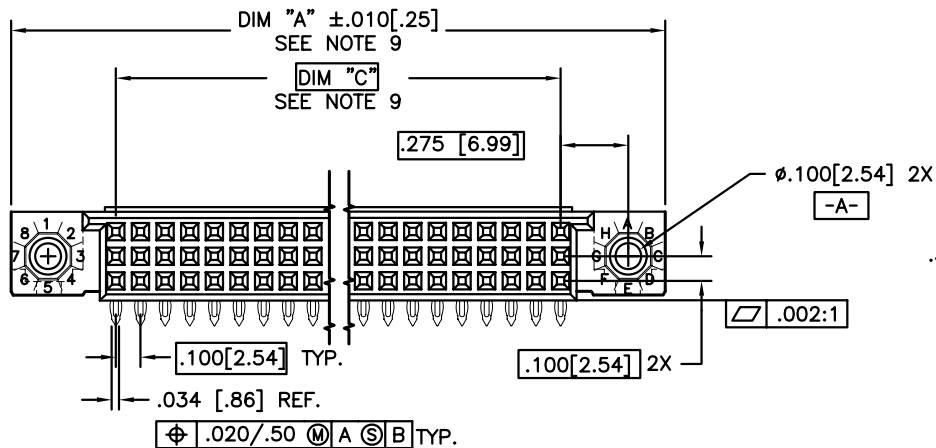
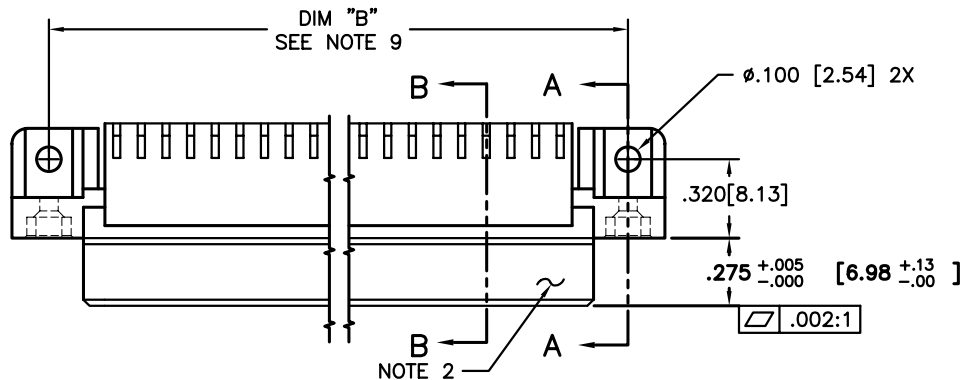


PRODUCT NUMBER
SEE TABLE



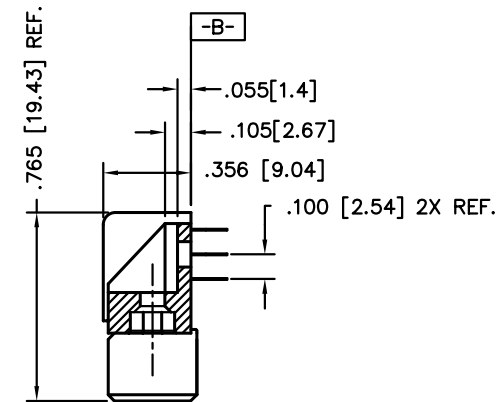
mat'l. code SEE NOTE 4				tolerances unless otherwise specified		CUSTOMER COPY	FCI www.fciconnect.com		
ltr	ecn no	dr	date				title	product family	code
H	V41510	GAH	10/13/94	linear	.XX $\pm .01$ /.X $\pm .3$	projection	3 ROW R/A RECEPT. PRESS FIT, 0 GUIDE PIN	HPC	213
J	V60822	GIP	5/30/96		.XXX $\pm .005$ /.XX $\pm .13$				
K	V90001	HTB	2/15/99	angles	.XXX $\pm .0020$ /.XXX $\pm .051$				
L	V00268	JWS	1/31/00	dr	0° ± 2	INCH/MM			
M	V10826	JRW	2/7/01	engr	G.PETERS 6/19/93				
N	V05-0511	DAI	08/15/05	chr	S.CLARK 6/19/93	scale			
P	V05-1054	HTB	11/17/05	appd	S.CLARK 6/19/93	1:1			
sheet index	revision sheet	P	P	P	P				
		1	2	3	4				

cage code
22526

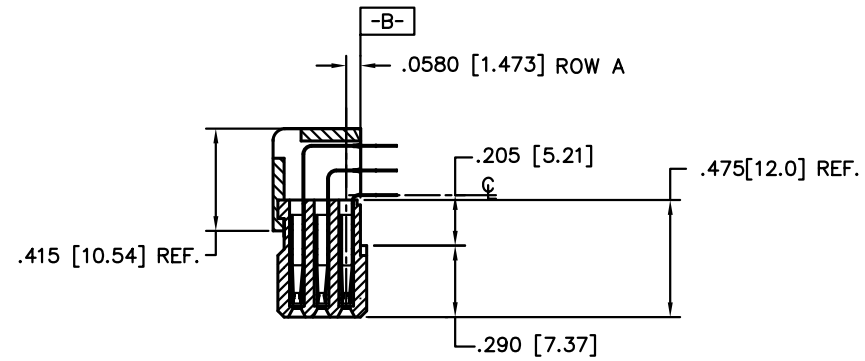
Tous droits strictement reserves. Reproduction ou communication a des tiers
Interdite sous quelque forme que ce soit sans autorisation ecrite du proprietaire.
Propriete de c FCI. Droits de reproduction FCI.

All rights strictly reserved. Reproduction or issue to third parties in any
form whatever is not permitted without written authority from the proprietor.
Property of FCI. Copyright FCI.

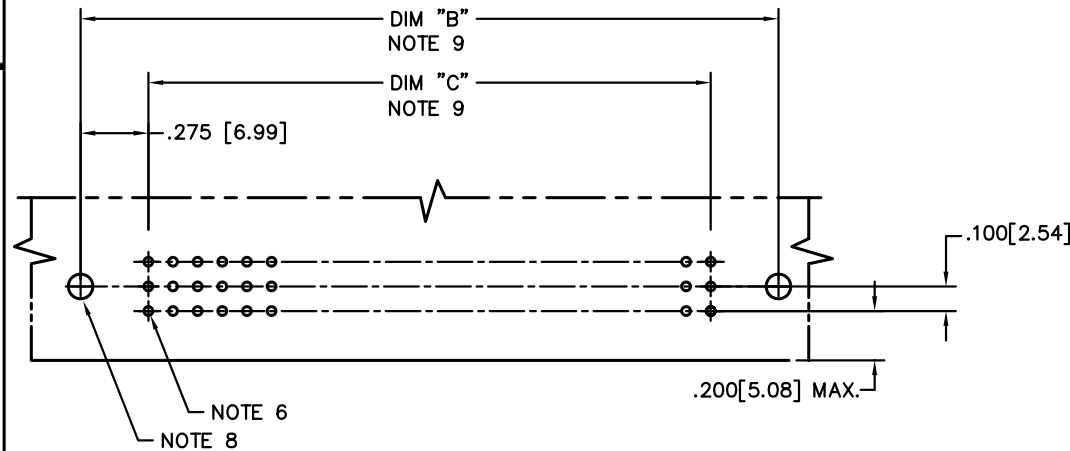
PRODUCT NUMBER
SEE TABLE




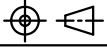
SECTION A-A



SECTION B-B



RECOMMENDED PCB LAYOUT
(ALL HOLES LOCATED ON .100 [2.54] GRID
UNLESS OTHERWISE SHOWN.)

mat'l. code SEE NOTE 4				tolerances unless otherwise specified		CUSTOMER COPY	 www.fciconnect.com		
ltr	ecr no	dr	date	linear	angular		title	product family	code
P				.XX ±.01/.X±.3	0° ±2°	projection	3 ROW R/A RECEPT. PRESS FIT, 0 GUIDE PIN	HPC	213
				.XXX ±.005/.XX±.13		 INCH/MM	size	dwg no	sheet
				.XXX ±.0020/.XXX±.051			A	50645	2 of
				dr G.PETERS 6/19/93	enr S.CLARK 6/19/93	scale			
				chr S.CLARK 6/19/93	appd S.CLARK 6/19/93	1:1			
sheet	revision								
index	sheet								

ACAD

PDM: Rev:P

STATUS: Released

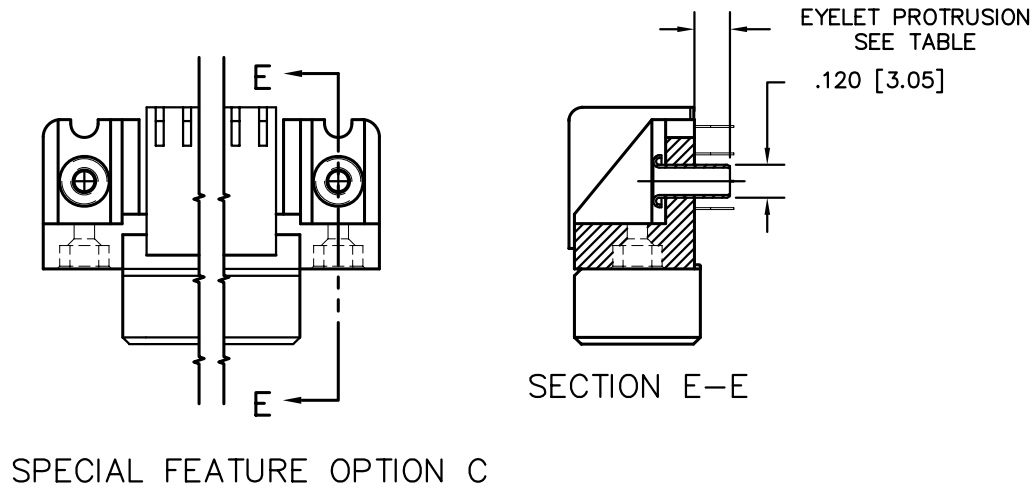
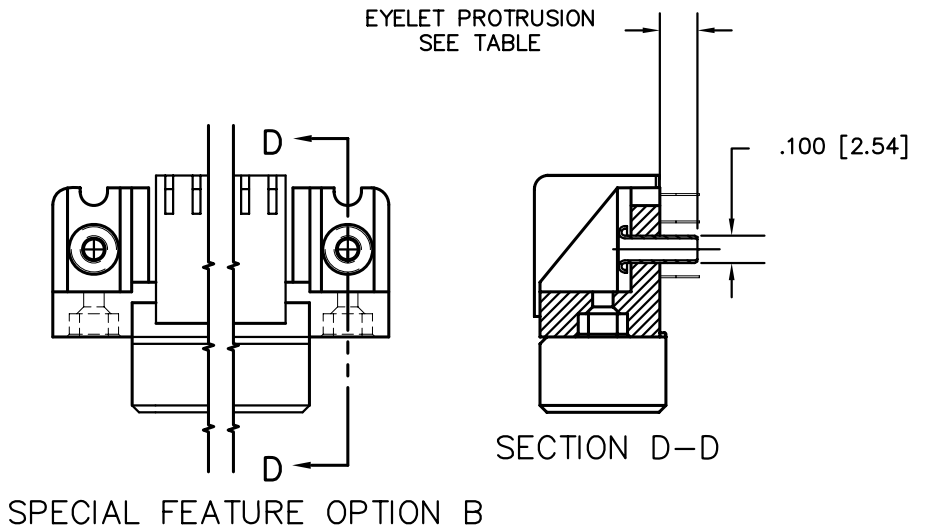
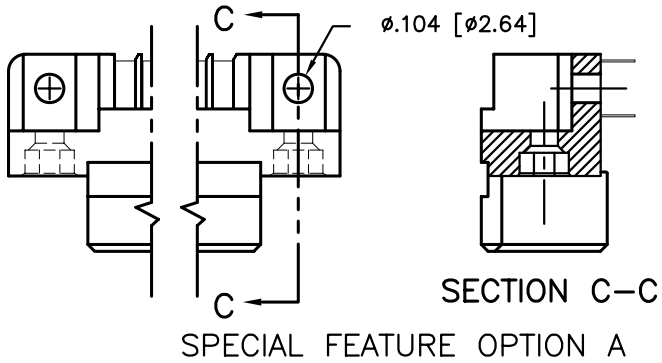
Printed: Dec 22, 2005

cage code
22526

Tous droits strictement reserves. Reproduction ou communication a des tiers
Interdite sous quelque forme que ce soit sans autorisation ecrite du proprietaire.
Propriete de c FCI. Droits de reproduction FCI.

All rights strictly reserved. Reproduction or issue to third parties in any
form whatever is not permitted without written authority from the proprietor.
Property of FCI. Copyright FCI.

PRODUCT NUMBER
SEE TABLE



mat'l. code SEE NOTE 4				tolerances unless otherwise specified		CUSTOMER COPY	FCI www.fciconnect.com		
ltr	ecn no	dr	date	linear	.XX ±.01/.X±.3		title		
P					.XXX ±.005/.XX±.13		3 ROW R/A RECEPT. PRESS FIT, 0 GUIDE PIN		
					.XXXX ±.0020/.XXX±.051		product family HPC		
				angles	0° ±2°	INCH/MM 1:1	code		
				dr	G.PETERS 6/19/93		size		
				enr	S.CLARK 6/19/93		213		
				chr	S.CLARK 6/19/93		sheet		
				appd	S.CLARK 6/19/93		3 of		
sheet index	revision sheet						A 50645		

ACAD

PDM: Rev:P

STATUS: Released

Printed: Dec 22, 2005

cage code
22526

1 | 2

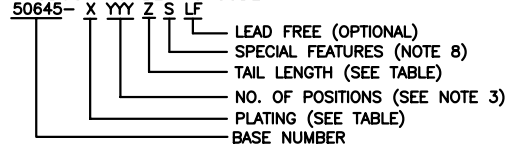
3 |

4

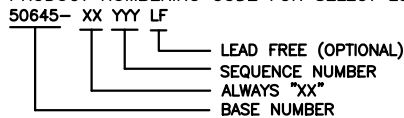
PRODUCT NUMBER NOTE 1	NUMBER OF POSITIONS NOTE 3	TAIL LENGTH ±.010/0.25	SPECIAL FEATURES SEE NOTE 8	SOLDER TAIL PLATING	CONTACT PLATING	EYELET PROTRUSION
50645-1YYYE	YYY	.125/3.18	NONE	TIN-LEAD	30u"/.76u Au	N/A
50645-2YYELF	YY	.125/3.18	NONE	TIN	30u"/.76u GXT	N/A
50645-1YYEA	YYY	.125/3.18	"A"	TIN-LEAD	30u"/.76u Au	N/A
50645-2YYEALF	YYY	.125/3.18	"A"	TIN	30u"/.76u GXT	N/A
50645-1YYEB	YYY	.125/3.18	"B"	TIN-LEAD	30u"/.76u Au	.137/3.48
50645-2YYEBLF	YY	.125/3.18	"B"	TIN	30u"/.76u GXT	.137/3.48
50645-1YYEC	YY	.125/3.18	"C"	TIN-LEAD	30u"/.76u Au	.115/2.92
50645-2YYECLF	YYY	.125/3.18	"C"	TIN	30u"/.76u GXT	.115/2.92
50645-1YYF	YYY	.145/3.68	NONE	TIN-LEAD	30u"/.76u Au	N/A
50645-2YYFLF	YYY	.145/3.68	NONE	TIN	30u"/.76u GXT	N/A
50645-1YYFA	YY	.145/3.68	"A"	TIN-LEAD	30u"/.76u Au	N/A
50645-2YYFALF	YY	.145/3.68	"A"	TIN	30u"/.76u GXT	N/A
50645-1YYFC	YYY	.145/3.68	"C"	TIN-LEAD	30u"/.76u Au	.170/4.32
50645-2YYFCLF	YYY	.145/3.68	"C"	TIN	30u"/.76u GXT	.170/4.32

NOTES:

①. PRODUCT NUMBERING CODE



PRODUCT NUMBERING CODE FOR SELECT LOAD



- ②. MANUFACTURE'S LOGO, PART NUMBER, AND LOT CODE TO APPEAR ON THIS SURFACE.
- ③. THIS PRODUCT IS CONFIGURED IN SIZES OF 6 THRU 80 COLUMNS IN INCREMENTS OF ONE, i.e. 6, 7, 8, 9,79, 80.
- ④. MATERIAL: PRESS BLOCK - HIGH TEMP THERMOPLASTIC HOUSING: GLASS AND MINERAL FILLED HIGH TEMPERATURE THERMOPLASTIC, FLAME RETARDANT PER UL94V-0. COLOR-BLACK CONTACT: BeCu
5. PLATING:
CONTACT AREA: 30u"/0.76 μm Au OR 30u"/0.76μm GXT (FOR LEAD-FREE OPTION)
TAILS: EITHER TIN OR TIN LEAD, SEE TABLE.
- ⑥. DRILLED HOLE DIA OF .0453±.0010 [1.151±0.025] FINISHED TO .0400±.0030 [1.016±0.076] BY PLATING SnPb OR OTHER PLATING .0003 [0.008] TO .0006 [0.015] THICK WITH A COPPER UNDERPLATE AS NEEDED.
7. INFORMATION DOCUMENT: FOR PCB STAY-AWAY ZONE, SEE TA-0954.

⑧. SPECIAL FEATURES:

- = IF NO SPECIAL FEATURE CODE IS SELECTED, CONNECTOR WILL APPEAR AS SHOWN. PCB MOUNTING HOLE DIMENSION TO BE $\phi.120\pm.003$ [3.05±0.07]
- "A" = IF SPECIFIED, CONNECTOR WILL APPEAR AS SHOWN ON SHEET 3. PCB MOUNTING HOLE DIMENSION TO BE $\phi.100\pm.003$ [2.54±0.07].
- "B" = IF SPECIFIED, CONNECTOR WILL HAVE PRE-INSTALLED EYELET FOR P.C.B. ATTACHMENT IN A $\phi.100\pm.003$ [2.54±0.07] MOUNTING HOLE. SEE SHEET 3. (AVAILABLE IN "E" TAIL LENGTH. ONLY).
- "C" = IF SPECIFIED, CONNECTOR WILL HAVE PRE-INSTALLED EYELET FOR P.C.B. ATTACHMENT IN A $\phi.120\pm.003$ [3.05±0.07] MOUNTING HOLE. SEE SHEET 3.

- ⑨. DIMENSION "A" CALCULATION = .100 (2.54) X NO. OF COLUMNS +.75 (19.1)
DIMENSION "B" CALCULATION = .100 (2.54) X NO. OF COLUMNS +.450 (11.43)
DIMENSION "C" CALCULATION = .100 (2.54) X NO. OF COLUMNS -.100 (2.54)

10. ALL POSITIONS ARE LOADED EXCEPT FOR -XXXXY ASSEMBLIES WHICH HAVE SELECTIVE LOADING.
11. THIS PRODUCT (WITH "LF" SUFFIX) MEETS EUROPEAN UNION DIRECTIVES AND OTHER COUNTRY REGULATIONS AS DESCRIBED IN GS-22-008.
12. THIS HOUSING WILL WITHSTAND EXPOSURE TO 260°C PEAK TEMPERATURE FOR 10-30 SECONDS IN A CONVECTION, INFRA-RED OR VAPOR PHASE REFLOW OVEN.

mat'l. code SEE NOTE 4				tolerances unless otherwise specified		CUSTOMER COPY	A FCI www.fciconnect.com		
ltr	ecn no	dr	date	linear	.XX ±.01/.X±.3 .XXX ±.005/.XX±.13 .XXXX ±.0020/.XXX±.051 0° ±2°		projection	title	
P								3 ROW R/A RECEPT. PRESS FIT, 0 GUIDE PIN	
				angles				product family	HPC
				dr	G.PETERS	6/19/93		code	213
				enrg	S.CLARK	6/19/93		size	dwg no
				chr	S.CLARK	6/19/93		A	50645
				appd	S.CLARK	6/19/93	scale	1:1	sheet
sheet	index	revision	sheet						4 of

1 | 2

3 |

4