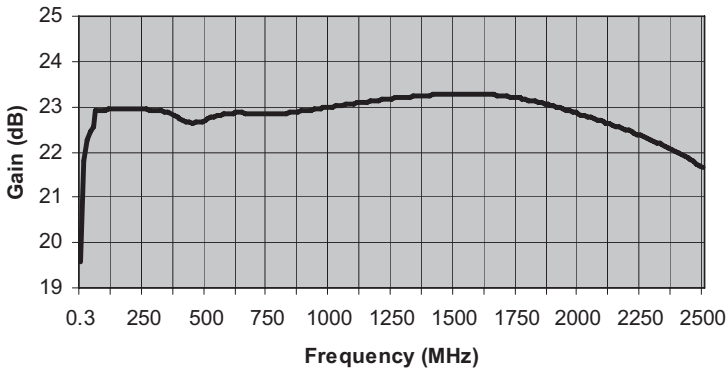


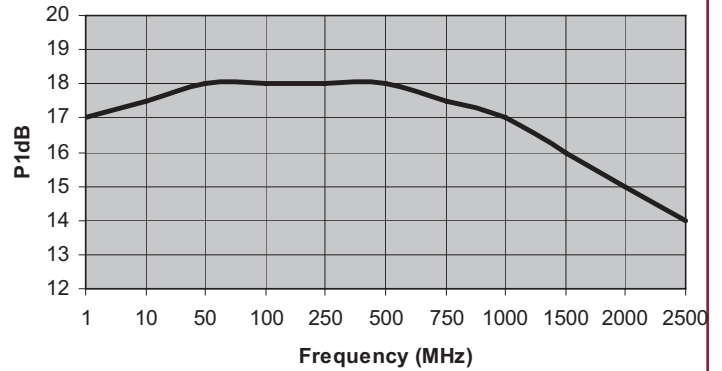
MITEQ AM-1352 SERIES AMPLIFIER

FREQUENCY (MHz)	MODEL NUMBER	GAIN (dB) (Min.)	VAR. (\pm dB) (Max.)	VSWR (Max.)	IMPED. IN/OUT (Ohms)	NOISE FIGURE (dB, Typ.)	P1 dB (dBm) (Typ.)	VOLTS	NOM. DC POWER (mA)	OUTLINE NO.
1-1000	AM-1352-1000	20	0.5	2.0:1	50/50	3.6	17	15	95	1
1-2000	AM-1352-2000	20	0.75	2.0:1	50/50	3.7	15	15	95	1
1-2500	AM-1352-2500	20	1	2.0:1	50/50	3.8	17	15	95	1

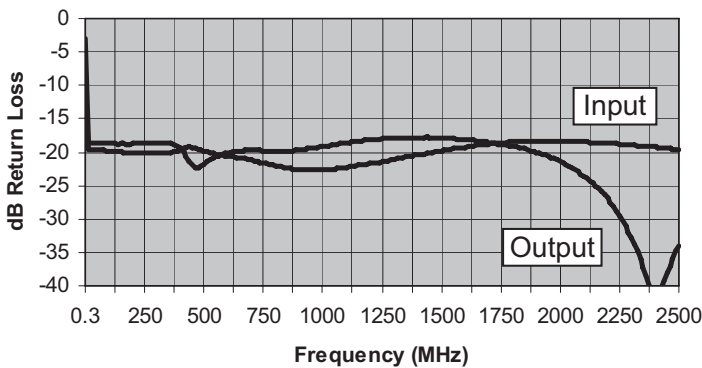
Gain (dB)



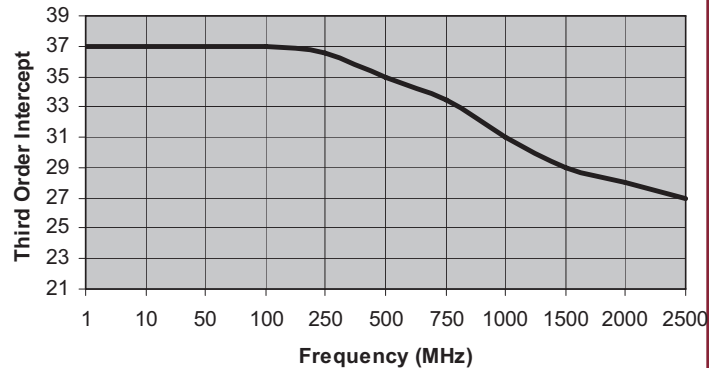
Output -1dB Gain Compression (+dBm)



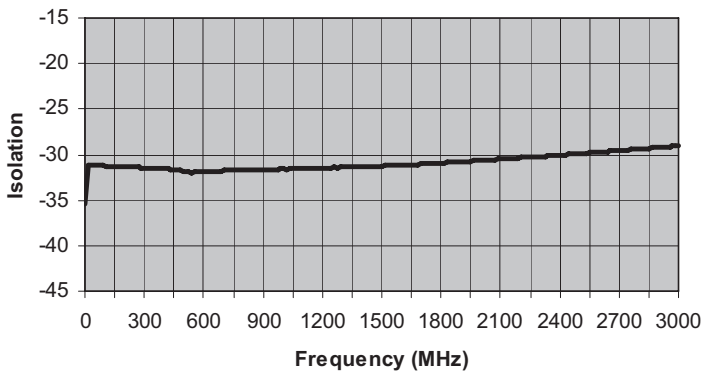
Input & Output Return Loss (dBRL)



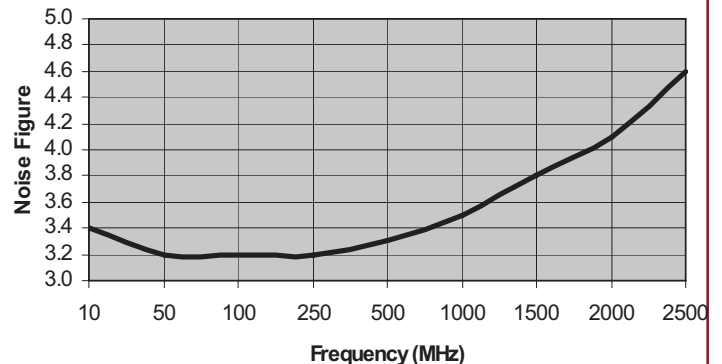
Output Third Order Intercept Point (+dBm)



Reverse Isolation (dB)



Noise Figure (dB)



ISO 9001:2000 Certified • General Information • Warranty



100 Davids Drive, Hauppauge, NY 11788
 TEL.: (631) 439-9220 • FAX: (631) 436-7430
 e-mail: components@miteq.com • www.miteq.com

MITEQ AM-1352 SERIES AMPLIFIER

Freq. (MHz)	Gain (dB)
0.3	19.6
13	21.8
25	22.3
38	22.5
50	22.6
63	22.9
75	22.9
88	22.9
100	22.9
113	22.9
125	22.9
138	22.9
150	22.9
163	22.9
175	22.9
188	22.9
200	22.9
213	22.9
225	22.9
238	22.9
250	22.9
263	22.9
275	22.9
288	22.9
300	22.9
313	22.9
325	22.9
338	22.9
350	22.9
363	22.8
375	22.8
388	22.8
400	22.7
413	22.7
425	22.7
438	22.7
450	22.6
463	22.6
475	22.7
488	22.7
500	22.7
513	22.7
525	22.8
538	22.8
550	22.8
563	22.8
575	22.8
588	22.8
600	22.9
613	22.9
625	22.9
638	22.9
650	22.9
663	22.9
675	22.9
688	22.9
700	22.9

Freq. (MHz)	Gain (dB)
713	22.8
725	22.8
738	22.8
750	22.8
763	22.8
775	22.8
788	22.8
800	22.8
813	22.8
825	22.9
838	22.9
850	22.9
863	22.9
875	22.9
888	22.9
900	22.9
913	22.9
925	22.9
938	22.9
950	23.0
963	23.0
975	23.0
988	23.0
1000	23.0
1013	23.0
1025	23.0
1038	23.0
1050	23.0
1063	23.0
1075	23.1
1088	23.1
1100	23.1
1113	23.1
1125	23.1
1138	23.1
1150	23.1
1163	23.1
1175	23.1
1188	23.1
1200	23.1
1213	23.2
1225	23.2
1238	23.2
1250	23.2
1263	23.2
1275	23.2
1288	23.2
1300	23.2
1313	23.2
1325	23.2
1338	23.2
1350	23.2
1363	23.2
1375	23.2
1388	23.2
1400	23.3
1413	23.3

Freq. (MHz)	Gain (dB)
1425	23.3
1438	23.3
1450	23.3
1463	23.3
1475	23.3
1488	23.3
1500	23.3
1513	23.3
1525	23.3
1538	23.3
1550	23.3
1563	23.3
1575	23.3
1588	23.3
1600	23.3
1613	23.3
1625	23.3
1638	23.3
1650	23.3
1663	23.3
1675	23.3
1688	23.2
1700	23.2
1713	23.2
1725	23.2
1738	23.2
1750	23.2
1763	23.2
1775	23.2
1788	23.2
1800	23.1
1813	23.1
1825	23.1
1838	23.1
1850	23.1
1863	23.1
1875	23.0
1888	23.0
1900	23.0
1913	23.0
1925	23.0
1938	22.9
1950	22.9
1963	22.9
1975	22.9
1988	22.9
2000	22.8
2013	22.8
2025	22.8
2038	22.8
2050	22.8
2063	22.7
2075	22.7
2088	22.7
2100	22.7
2113	22.6
2125	22.6

Freq. (MHz)	Gain (dB)
2138	22.6
2150	22.6
2163	22.5
2175	22.5
2188	22.5
2200	22.5
2213	22.4
2225	22.4
2238	22.4
2250	22.4
2263	22.3
2275	22.3
2288	22.3
2300	22.2
2313	22.2
2325	22.2
2338	22.2
2350	22.1
2363	22.1
2375	22.1
2388	22.0
2400	22.0
2413	21.9
2425	21.9
2438	21.9
2450	21.8
2463	21.8
2475	21.7
2488	21.7
2500	21.7



100 Davids Drive, Hauppauge, NY 11788
TEL.: (631) 439-9220 • FAX: (631) 436-7430
e-mail: components@miteq.com • www.miteq.com

MITEQ AM-1352 SERIES AMPLIFIER

Freq. (MHz)	Input VSWR (dBRL)	Output VSWR (dBRL)
0.3	-11	-3
13	-20	-19
25	-20	-19
38	-20	-19
50	-20	-19
63	-20	-19
75	-20	-19
88	-20	-19
100	-20	-19
113	-20	-19
125	-20	-19
138	-20	-19
150	-20	-19
163	-20	-19
175	-20	-19
188	-20	-19
200	-20	-19
213	-20	-19
225	-20	-19
238	-20	-19
250	-20	-19
263	-20	-19
275	-20	-19
288	-20	-19
300	-20	-19
313	-20	-19
325	-20	-19
338	-20	-19
350	-20	-19
363	-20	-19
375	-20	-19
388	-20	-19
400	-20	-19
413	-19	-20
425	-19	-21
438	-19	-21
450	-19	-22
463	-19	-22
475	-20	-22
488	-20	-22
500	-20	-22
513	-20	-21
525	-20	-21
538	-20	-21
550	-20	-21
563	-20	-21
575	-20	-20
588	-21	-20
600	-21	-20
613	-21	-20
625	-21	-20
638	-21	-20
650	-21	-20
663	-21	-20
675	-21	-20
688	-21	-20

Freq. (MHz)	Input VSWR (dBRL)	Output VSWR (dBRL)
700	-21	-20
713	-21	-20
725	-21	-20
738	-22	-20
750	-22	-20
763	-22	-20
775	-22	-20
788	-22	-20
800	-22	-20
813	-22	-20
825	-22	-20
838	-22	-20
850	-22	-20
863	-22	-20
875	-23	-20
888	-23	-20
900	-23	-20
913	-23	-20
925	-23	-20
938	-23	-19
950	-23	-19
963	-23	-19
975	-23	-19
988	-23	-19
1000	-23	-19
1013	-23	-19
1025	-23	-19
1038	-23	-19
1050	-23	-19
1063	-22	-19
1075	-22	-19
1088	-22	-19
1100	-22	-19
1113	-22	-19
1125	-22	-18
1138	-22	-18
1150	-22	-18
1163	-22	-18
1175	-22	-18
1188	-22	-18
1200	-22	-18
1213	-22	-18
1225	-22	-18
1238	-21	-18
1250	-21	-18
1263	-21	-18
1275	-21	-18
1288	-21	-18
1300	-21	-18
1313	-21	-18
1325	-21	-18
1338	-21	-18
1350	-21	-18
1363	-21	-18
1375	-21	-18
1388	-20	-18

Freq. (MHz)	Input VSWR (dBRL)	Output VSWR (dBRL)
1400	-20	-18
1413	-20	-18
1425	-20	-18
1438	-20	-18
1450	-20	-18
1463	-20	-18
1475	-20	-18
1488	-20	-18
1500	-20	-18
1513	-20	-18
1525	-20	-18
1538	-20	-18
1550	-20	-18
1563	-19	-18
1575	-19	-18
1588	-19	-18
1600	-19	-18
1613	-19	-18
1625	-19	-18
1638	-19	-18
1650	-19	-18
1663	-19	-18
1675	-19	-18
1688	-19	-18
1700	-19	-19
1713	-19	-19
1725	-19	-19
1738	-19	-19
1750	-19	-19
1763	-19	-19
1775	-19	-19
1788	-18	-19
1800	-18	-19
1813	-18	-19
1825	-18	-19
1838	-18	-19
1850	-18	-19
1863	-18	-20
1875	-18	-20
1888	-18	-20
1900	-18	-20
1913	-18	-20
1925	-18	-20
1938	-18	-20
1950	-18	-21
1963	-18	-21
1975	-18	-21
1988	-18	-21
2000	-18	-21
2013	-18	-22
2025	-18	-22
2038	-18	-22
2050	-18	-22
2063	-18	-23
2075	-18	-23
2088	-18	-23

Freq. (MHz)	Input VSWR (dBRL)	Output VSWR (dBRL)
2100	-18	-24
2113	-18	-24
2125	-19	-24
2138	-19	-25
2150	-19	-25
2163	-19	-25
2175	-19	-26
2188	-19	-26
2200	-19	-27
2213	-19	-27
2225	-19	-28
2238	-19	-29
2250	-19	-30
2263	-19	-30
2275	-19	-31
2288	-19	-32
2300	-19	-33
2313	-19	-34
2325	-19	-35
2338	-19	-36
2350	-19	-37
2363	-19	-39
2375	-19	-40
2388	-19	-41
2400	-19	-42
2413	-19	-41
2425	-19	-40
2438	-19	-39
2450	-19	-38
2463	-19	-37
2475	-20	-36
2488	-20	-35
2500	-20	-34



100 Davids Drive, Hauppauge, NY 11788
 TEL.: (631) 439-9220 • FAX: (631) 436-7430
 e-mail: components@miteq.com • www.miteq.com

MITEQ AM-1352 SERIES AMPLIFIER

Freq. (MHz)	Reverse Isolation (dB)
0.3	-35
13	-31
25	-31
38	-31
50	-31
63	-31
75	-31
88	-31
100	-31
113	-31
125	-31
138	-31
150	-31
163	-31
175	-31
188	-31
200	-31
213	-31
225	-31
238	-31
250	-31
263	-31
275	-31
288	-31
300	-32
313	-32
325	-32
338	-32
350	-32
363	-32
375	-32
388	-32
400	-32
413	-32
425	-32
438	-32
450	-32
463	-32
475	-32
488	-32
500	-32
513	-32
525	-32
538	-32
550	-32
563	-32
575	-32
588	-32
600	-32
613	-32
625	-32
638	-32
650	-32
663	-32
675	-32
688	-32

Freq. (MHz)	Reverse Isolation (dB)
700	-32
713	-32
725	-32
738	-32
750	-32
763	-32
775	-32
788	-32
800	-32
813	-32
825	-32
838	-32
850	-32
863	-32
875	-32
888	-32
900	-32
913	-32
925	-32
938	-32
950	-31
963	-31
975	-32
988	-31
1000	-31
1013	-31
1025	-31
1038	-31
1050	-31
1063	-31
1075	-31
1088	-31
1100	-31
1113	-31
1125	-31
1138	-31
1150	-31
1163	-31
1175	-31
1188	-31
1200	-31
1213	-31
1225	-31
1238	-31
1250	-31
1263	-31
1275	-31
1288	-31
1300	-31
1313	-31
1325	-31
1338	-31
1350	-31
1363	-31
1375	-31
1388	-31

Freq. (MHz)	Reverse Isolation (dB)
1400	-31
1413	-31
1425	-31
1438	-31
1450	-31
1463	-31
1475	-31
1488	-31
1500	-31
1513	-31
1525	-31
1538	-31
1550	-31
1563	-31
1575	-31
1588	-31
1600	-31
1613	-31
1625	-31
1638	-31
1650	-31
1663	-31
1675	-31
1688	-31
1700	-31
1713	-31
1725	-31
1738	-31
1750	-30
1763	-30
1775	-30
1788	-30
1800	-30
1813	-30
1825	-30
1838	-30
1850	-30
1863	-30
1875	-30
1888	-30
1900	-30
1913	-30
1925	-30
1938	-30
1950	-30
1963	-30
1975	-30
1988	-30
2000	-30
2013	-30
2025	-30
2038	-30
2050	-30
2063	-30
2075	-30
2088	-30

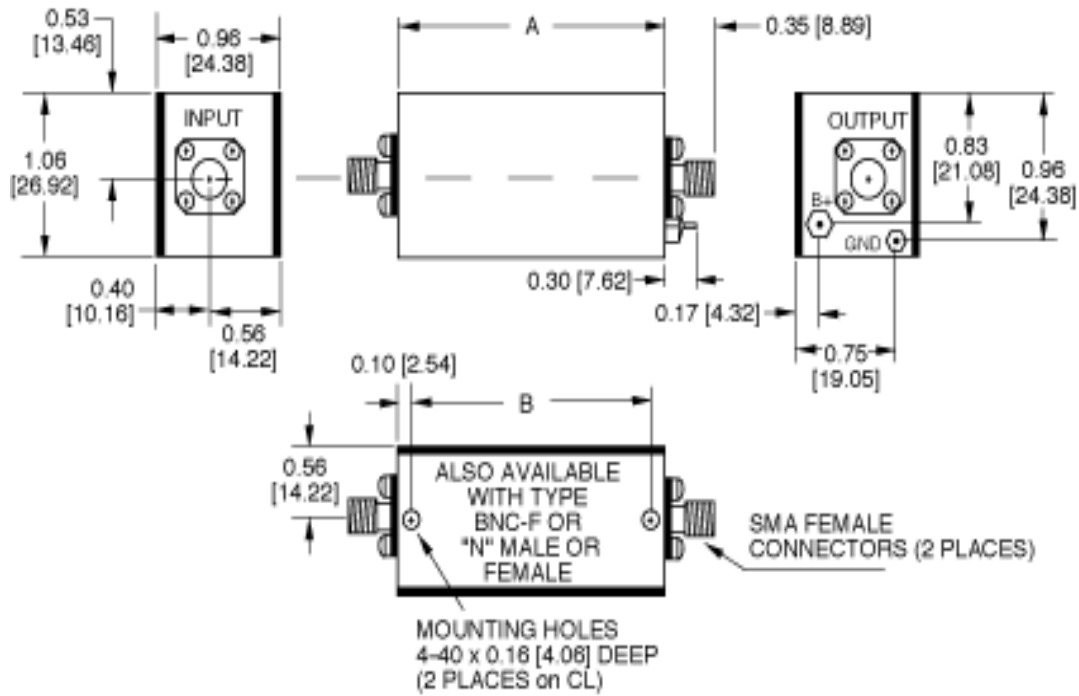
Freq. (MHz)	Reverse Isolation (dB)
2100	-30
2113	-30
2125	-30
2138	-30
2150	-30
2163	-30
2175	-30
2188	-30
2200	-30
2213	-30
2225	-30
2238	-30
2250	-30
2263	-30
2275	-30
2288	-29
2300	-29
2313	-29
2325	-29
2338	-29
2350	-29
2363	-29
2375	-29
2388	-29
2400	-29
2413	-29
2425	-29
2438	-29
2450	-29
2463	-29
2475	-29
2488	-29
2500	-29



100 Davids Drive, Hauppauge, NY 11788
 TEL.: (631) 439-9220 • FAX: (631) 436-7430
 e-mail: components@miteq.com • www.miteq.com

MITEQ AM-1352 SERIES AMPLIFIER

OUTLINE	DIM A	DIM B	OUNCES
1	1.11 [28.19]	0.91 [23.11]	1.5



NOTE: DIMENSIONS ARE IN INCHES [MILLIMETERS].



100 Davids Drive, Hauppauge, NY 11788
 TEL.: (631) 439-9220 • FAX: (631) 436-7430
 e-mail: components@miteq.com • www.miteq.com

OPTIONS FOR BIPOLAR AMPLIFIERS

INPUT BIAS TEE

Add Suffix "-F"

Used to inject bias signal to photo diode or other type of device. Check for availability on your model before ordering. Available on most units operating above 1 MHz. Please contact MITEQ with your custom requirements.

BIAS THROUGH THE OUTPUT CONNECTOR

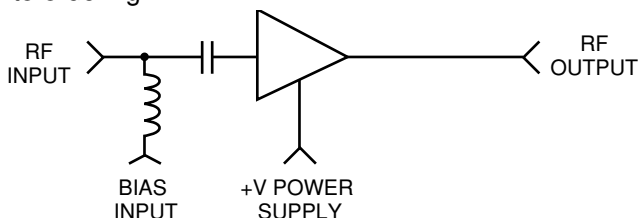
Add Suffix "-1306/E" or "-1306/D"

Used to supply operating power when the amplifier is remotely located while eliminating the need to run a separate DC line. Specify whether existing power pin should be "Enabled" or "Disabled." To order, add -1306/E or -1306/D after model number. Example: AU-2A-0150-1306/E will have existing +15 V pin enabled so that it can be used as a test point. Use caution with this option since any voltage applied here will also be present on the RF output center pin. Available on most units operating above 1 MHz.

BIAS THROUGH THE OUTPUT CONNECTOR WITH DC FEEDTHROUGH TO RF INPUT

Add Suffix "-1334/E" or "-1334/D"

Used to supply operating power when the amplifier is remotely located and eliminates the need to run a separate DC line. This DC voltage is then internally fed to the RF input to power a remote LNA or other low power equipment. Maximum current of external load will vary with model type. Available on most units operating above 1 MHz. Please contact factory prior to ordering.



Specify whether existing power pin should be "Enabled" or "Disabled". To order, add "-1334/E" or "-1334/D"

after model number. Example: AU-2A-0150-1334/E will have existing +15 V pin enabled so that it can be used as a test point. Use caution with this option since any voltage applied here will also be present on both the RF output and input center pins.

TYPE N OR BNC CONNECTORS

Add Suffix "-N" or "-BNC"

Type N-female and type BNC-female are available for all outlines 1 through 5, 12, 13 and 15 amplifiers. Add connector type after model number. Examples: AU-2A-0150-N; AU-2A-0150-BNC. Type N-male and mixed connector types are also available on request. Please call MITEQ with your specific requirements.

INPUT INTERNAL LIMITER

Add Suffix "-1103"

Available on models up to 500 MHz. Will protect the input stage from CW signals as high as +30 dBm. To order, add "-1103" after model number. Example: AU-2A-0150-1103. Options are available for protection against short duration pulses up to 50 W.

AC POWER SUPPLY (100 to 240 VAC, 47 - 440 Hz). Add Suffix "-1179"

Available as an add-on to most models using outlines 1 through 5 and 15. Includes 6-foot line cord with standard US line plug, internal fuse, on/off switch and LED indicator light. Amplifier is permanently mounted to power supply. To order, add "-1179" after model number. Example: AU-2A-0150-1179. Refer to outline 12 for dimensions.

AC POWER SUPPLY (Wall plug-in unit) Part Number "205531-19"

A low cost alternate to option "-1179", the wall plug-in unit is a small switching power supply capable of delivering 1 amp at 15 volts.

AC POWER SUPPLY WITH SMC CONNECTORS (Wall plug-in unit) Part Number "-1179SC"

Same as above except has mating SMC connectors on amplifier DC input and power supply DC output. Available for outlines 1 through 10, 13 and 15.

ADDITIONAL OPTIONS AVAILABLE

OPTION	SUFFIX
Gain Window	-GW
Phase Match	-PM
Amplitude Match	-AM
Gain Control	-GC

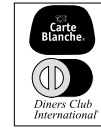


100 Davids Drive, Hauppauge, NY 11788
TEL.: (631) 439-9220 • FAX: (631) 436-7430
e-mail: components@miteq.com • www.miteq.com

GENERAL INFORMATION

PRICING AND TERMS

A quotation on any item in the catalog is available by contacting the factory. All quotations, unless otherwise noted, are valid for 60 days from the date of issue, F.O.B. (FCA) Hauppauge, NY 11788. Pricing does not include customer or government source inspection unless otherwise noted. On international orders, an irrevocable letter of credit may be required. MITEQ accepts these credit cards:



QUANTITY DISCOUNTS

A quantity discount is generally available on most catalog items. Due to the wide variety of devices in the catalog, it is not possible to provide a standard discount schedule. When quantities are involved, please contact the factory and the appropriate information will be provided.

SOURCE INSPECTION

Government / customer source inspection is available on any item upon receipt of the complete written confirmation of purchase order items, including the prime government contract number. Source inspection with respect to some products increases the unit price and extends delivery because of duplicate standard final inspection and testing. It is recommended wherever possible that a Certificate of Compliance be substituted for source inspection to minimize price and delivery delays.

SHIPPING INFORMATION

Unless instructed otherwise by the customer, we will ship UPS in the U.S. F.O.B. (FCA) Hauppauge. Air freight will be used as the primary international means of shipment. Please indicate at time of purchase what method of shipment you require.

RETURNED MATERIAL

When returning material for repair or replacement, please ensure that there is complete information included with the shipment, giving a detailed description of the reason for its return, the date and purchase order on which it was obtained, and the exact address to which the material is to be reshipped. All returns must arrive freight, postage, duties and handling prepaid.

REPAIR COSTS

Warranty repairs will be made at no cost to the customer. Units out of warranty, or those which have been mishandled, will require approval by the customer for the charges involved before the repairs can be accomplished. We will provide an estimate for the cost of the repair, which can be applied to the repair, if approval is granted. For those items that are deemed beyond repair, or where the customer may decide not to repair the unit, an evaluation fee and handling charge will be applicable.

APPLICATION ENGINEERING

We maintain a large support staff of engineers who are experts in specific areas of microwave technology. Each has an engineering background that combines both a formal engineering education with training and experience in product design. As further technical support, we make available the services of our engineering and scientific staff, who may be consulted on more advanced circuit designs or application problems.

DRAWINGS AND SPECIFICATIONS

The material presented in this catalog was current at the time of publication. MITEQ Inc.'s continuing product improvement program makes it necessary to reserve the right to change our mechanical and electrical specifications without notice. If either of these parameters is critical, please contact the factory to verify that the information is current.

ADDITIONAL INFORMATION

WARRANTY

ISO 9001:2000 Certified



MITEQ FEDERAL SUPPLY CODE

Our Federal Supply Code is: 33592



100 Davids Drive, Hauppauge, NY 11788
TEL.: (631) 439-9220 • FAX: (631) 436-7430
e-mail: components@miteq.com • www.miteq.com