

**SAW Filter 821.5MHz**  
**Part No: MA08038**

**Model: TA0558A**  
**Rev No: 1**

**A. MAXIMUM RATING:**

1. Input Power Level: 10dBm
2. DC voltage: 3V
3. Operating Temperature: -20°C to +70°C
4. Storage Temperature: -40°C to +85°C

**B. CHARACTERISTICS:**

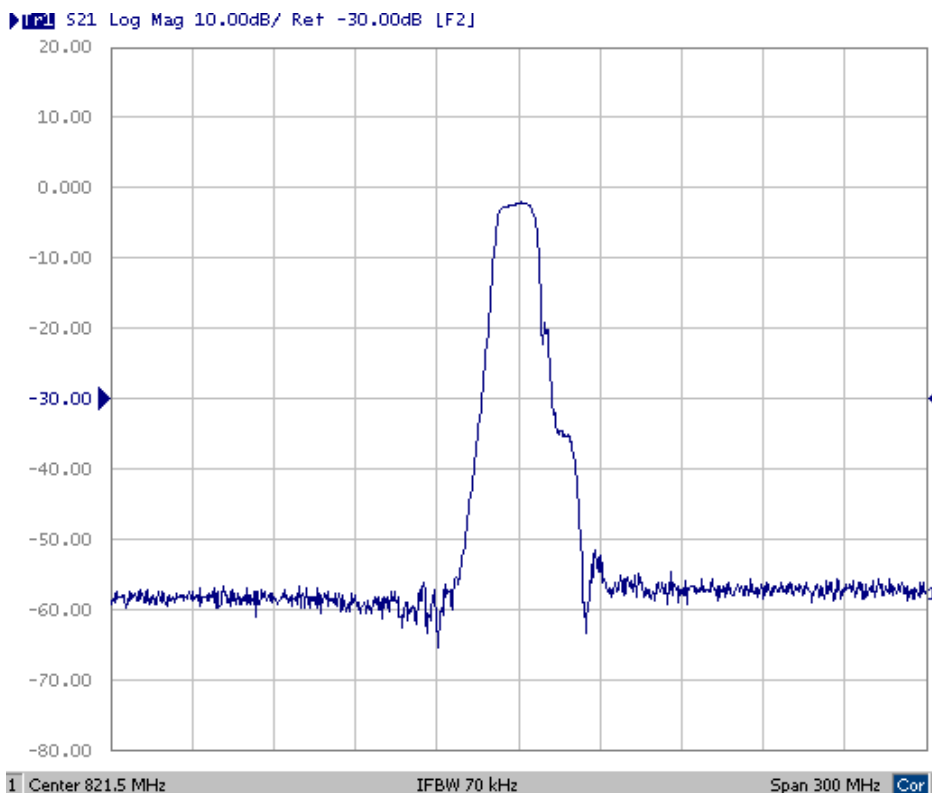
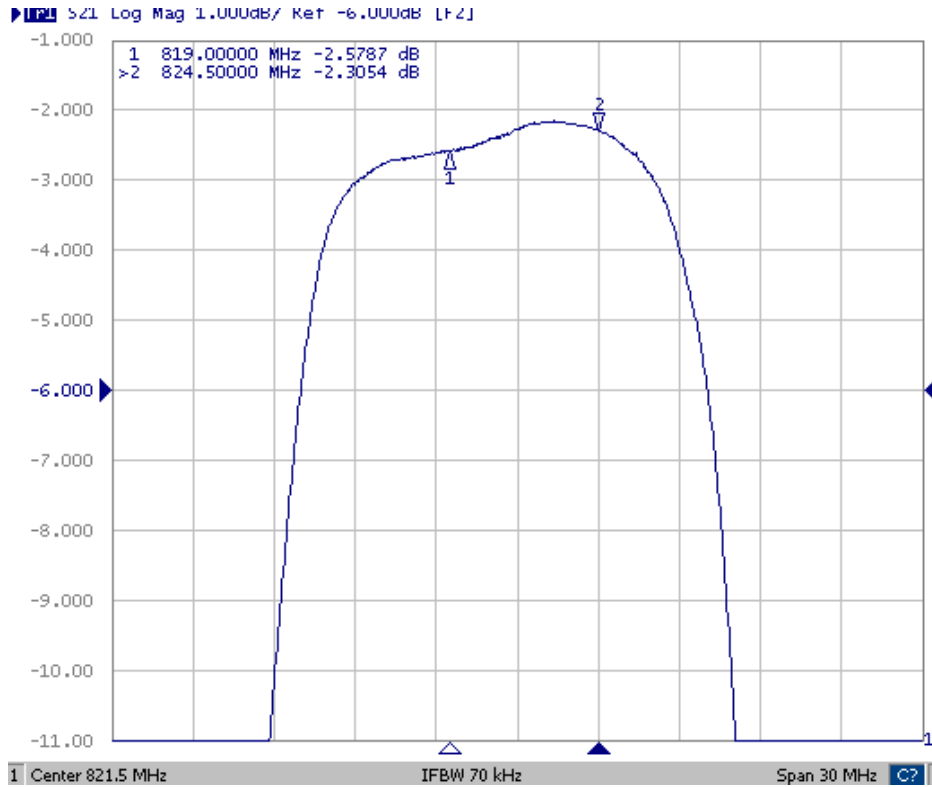
Item		Min.	Typ.	Max.
Center frequency Fc	MHz	-	821.5	-
Insertion loss 819 ~ 824.5MHz IL	dB	-	2.6	4.2
Amplitude ripple 819 ~ 824.5MHz	dB	-	0.7	1.5
Attenuation (Reference level from 0dB)				
729.0 ~ 734.0MHz	dB	40	50	-
774.0 ~ 779.0MHz	dB	40	50	-
796.5 ~ 801.5MHz	dB	33	43	-
Source impedance Z <sub>S</sub>	Ω	-	50	-
Load impedance Z <sub>L</sub>	Ω	-	50	-

Note1. No matching network required for operation at 50Ω

**SAW Filter 821.5MHz**  
**Part No: MA08038**

**Model: TA0558A**  
**Rev No: 1**

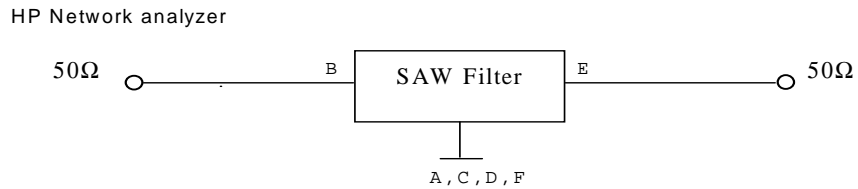
**C. TRANSFER FUNCTION:**



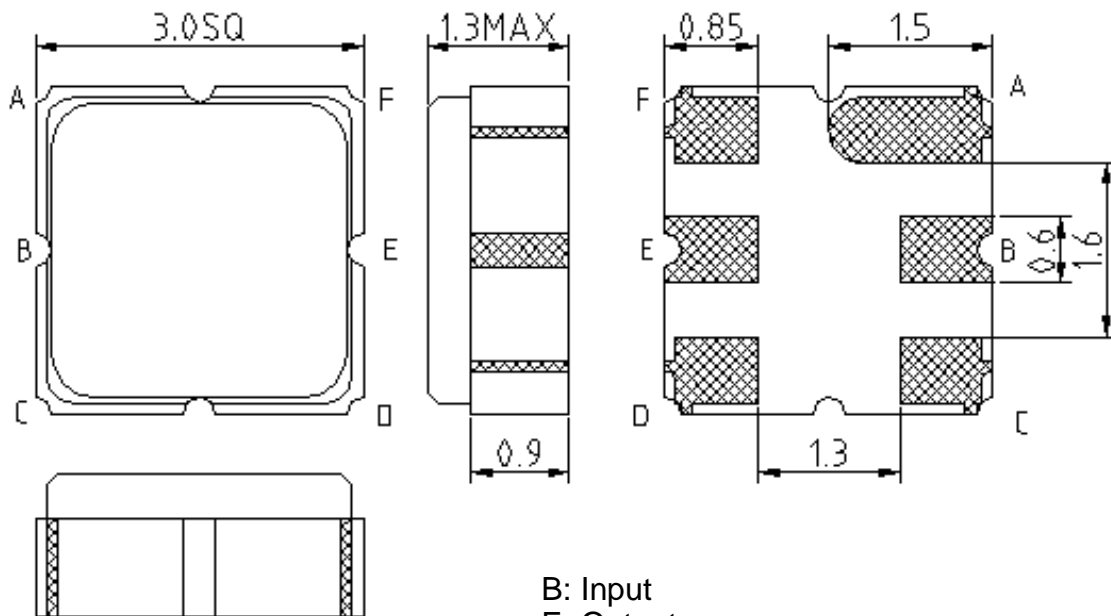
**SAW Filter 821.5MHz**  
**Part No: MA08038**

**Model: TA0558A**  
**Rev No: 1**

**D. MEASUREMENT CIRCUIT:**



**E. OUTLINE DRAWING:**



B: Input  
E: Output  
A, C, D, F: Ground  
Unit: mm

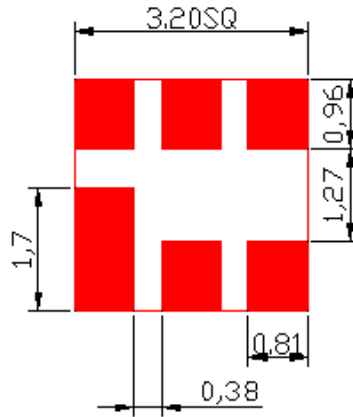
---

**SAW Filter 821.5MHz**  
**Part No: MA08038**

**Model: TA0558A**  
**Rev No: 1**

---

**F. PCB FOOTPRINT:**

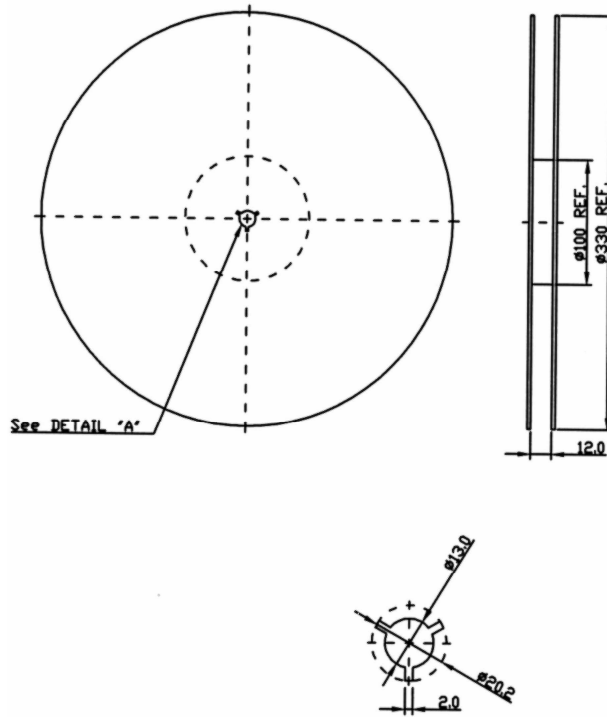


**SAW Filter 821.5MHz**  
**Part No: MA08038**

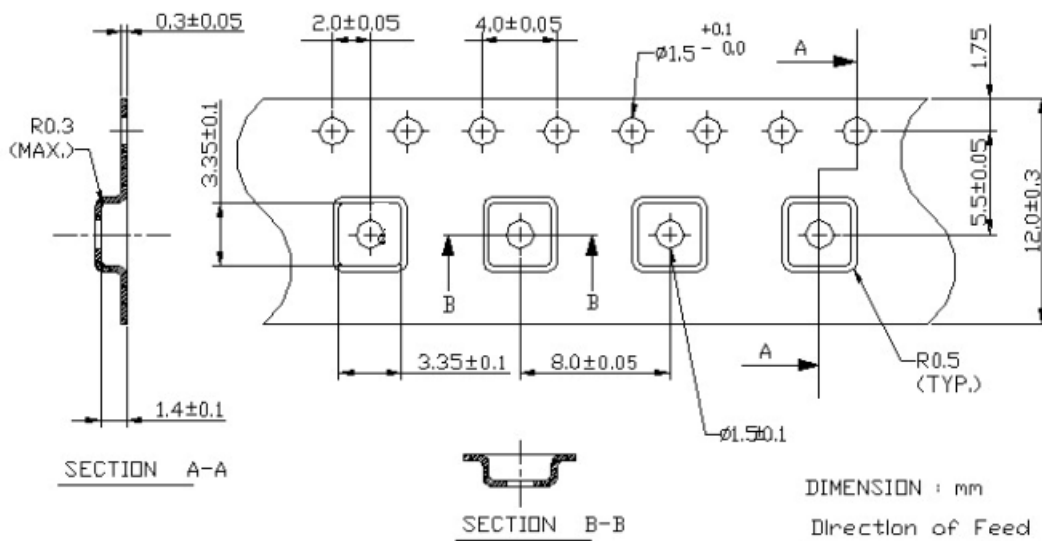
**Model: TA0558A**  
**Rev No: 1**

**G. PACKING:**

**1. REEL DIMENSION**



**2. TAPE DIMENSION**



---

**SAW Filter 821.5MHz**  
**Part No: MA08038**

**Model: TA0558A**  
**Rev No: 1**

---

**H. RECOMMENDED REFLOW PROFILE:**

