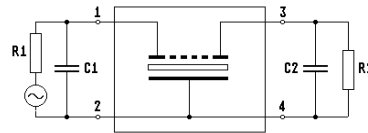
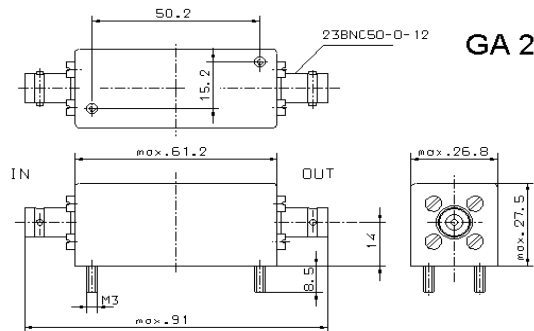


Specification for monolithic crystal filter

MQF 150.85 - 1500 / B

1. General

1.1. Case:



- 1.2. Type name: MQF 150.85-1500/B
- 1.3. Number of poles: 6, 5 th overtone
- 1.4. Operating temperature range: -20°C to 70°C
- 1.5. Storage temperature range: -30°C to 80°C

2. Electric values

- 2.1. Nominal center frequency fo: 150.85 MHz
- 2.2. Pass band
 - 2.2.1. Bandwidth between 3 dB - frequencies: $\geq f_0 \pm 7.5$ kHz
 - 2.2.2. Ripple: ≤ 1.0 dB at $f_0 \pm 5.0$ kHz
 - 2.2.3. Insertion loss: ≤ 8.0 dB
(measured on smallest attenuation in pass band)
- 2.3. Stop band
 - 2.3.1. $f_0 \pm 25$ kHz: ≥ 20 dB
 - 2.3.2. $f_0 \pm 60$ kHz: ≥ 60 dB
 - 2.3.3. Alternate attenuation: ≥ 60 dB (except spurious)
 - 2.3.4. Spurious responses: ≥ 40 dB at frequencies $> f_0 + 60$ kHz
- 2.4. Terminating impedance (input and output): $50 \Omega // 0$ pF
- 3. Marking on the case: firm, year week
MQF 150.85-1500/B
- 4. Environment conditions: Corresponding to Telefilter CF001

Edited by: _____ date: _____ name: _____