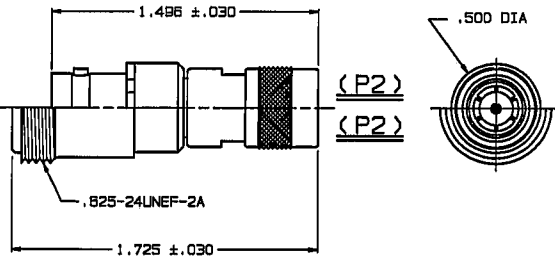


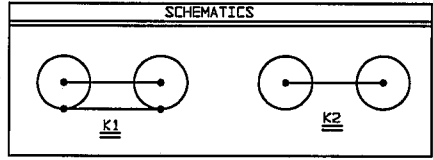
WEB INDICATES ORIGINAL

P2 CONN TYPE	FIG NO	P1 CONN TYPE											
		BJ20		UBJ20		BJ40/B		UBJ40/B		J85		UJ85	
		SCHEMATICS											
		K1	K2	K1	K2	K1	K2	K1	K2	K1	K2	K1	K2
DASH NO													
PL50	1A/1B	-1	-2	-3	-4	-5	-6	-7	-8	-9	-10	-11	-12
PL50FL	1A/1B	-13	-14	-15	-16	-17	-18	-19	-20	-21	-22	-23	-24
PL350	5A/5B	-25	-26	-27	-28	-29	-30	-31	-32	-33	-34	-35	-36
PL53	2A/2B	-37	-38	-39	-40	-41	-42	-43	-44	-45	-46	-47	-48
PL350S	5A/5B	-49	-50	-51	-52	-53	-54	-55	-56	-57	-58	-59	-60
BJ59	3A/3B	-61	-62	-63	-64	-65	-66	-67	-68	-69	-70	-71	-72
BJ59FL	3A/3B	-73	-74	-75	-76	-77	-78	-79	-80	-81	-82	-83	-84
BJ359	3A/3B	-85	-86	-87	-88	-89	-90	-91	-92	-93	-94	-95	-96
C.60	4A/4B	-97	-98	-99	-100	-101	-102	-103	-104	-105	-106	-107	-108
CJ50FL	4A/4B	-109	-110	-111	-112	-113	-114	-115	-116	-117	-118	-119	-120
CJ350	4A/4B	-121	-122	-123	-124	-125	-126	-127	-128	-129	-130	-131	-132

FIG 1A (P1)
-1 SHOWN
-9 SHOWN
FIG 1B (P1)



INCH	MM
.005	0.13
.030	0.76
.125	3.18
.187	4.75
.438	11.15
.444	11.28
.500	12.70
.625	15.88
1.438	36.47
1.495	38.00
1.518	38.51
1.538	39.01
1.665	42.29
1.725	43.82
1.745	44.32
1.765	44.83



ITEM NOT SHOWN

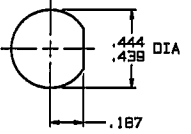
5. EXAMPLE OF COMPLETE PART NO:
12-16-20
BASIC PART NO. — DASH NO.

4. EXAMPLE OF COMPLETE MODEL NO:
AD-BJ20-K1-PL350
ADAPTER — CONNECTOR P2
CONNECTOR P1 — SCHEMATIC

3. BETWEEN SERIES ADAPTER,
50 & 75 OHM BNC/TNC/N
RECEPTACLE TO 50 OHM COAXIAL
SUBMINIATURE 3-LUG, 4-LUG,
THREADED; PUSH ON & THREADED
PLUG WITH SAFETY WIRE HOLES

2. FINISH: TFS-1A (NICKEL)

1. ALL DIM ARE IN INCHES



RECOMMENDED
PANEL CUTOUT
MAX PANEL THK .125

DWG SIZE	REVISIONS			12-16		SH 1
	REV	ED	DESCRIPTION	OWN	APPROVED	DATE
C	C	10983	REVISED DIMENSIONS; SEE ECD	DKC	Bm; FR	3/14/95

FIG 2A (P1)
-37 SHOWN
FIG 2B (P1)
-45 SHOWN

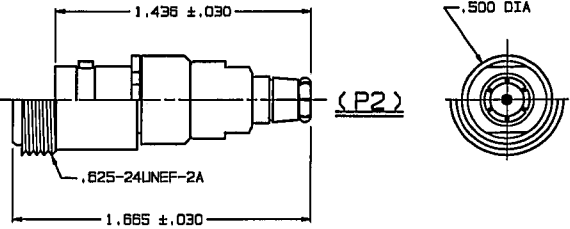


FIG 3A (P1)
-61 SHOWN
FIG 3B (P1)
-93 SHOWN

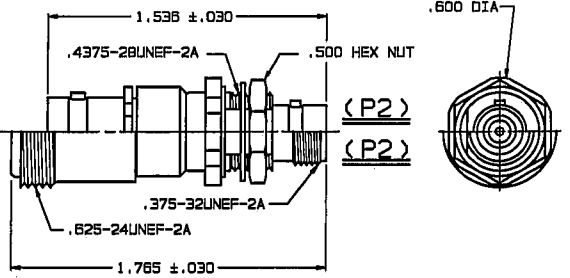


FIG 4A (P1)
-97 SHOWN
FIG 4B (P1)
-129 SHOWN

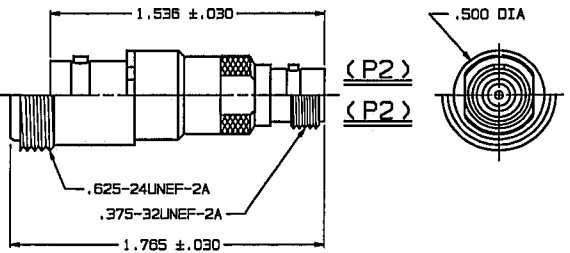
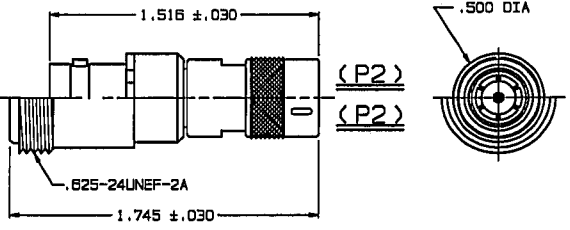


FIG 5A (P1)
-25 SHOWN
-57 SHOWN
FIG 5B (P1)



QTY	DESCRIPTION	PART NUMBER	ITEM
TOL UNLESS SPECIFIED	TROMPETER ELECTRONICS, INC.	ADAPTERS: 1/BJ20/40/J85 TO COMPLETE 50 SERIES	REV C
.XX ± .005			
.XXX ± .005	MATERIAL	CODE IDENT	DRAWING NO.
.XXXX	14949	12-16	12-16
ANGLES:	ENGR	APPR	SCALE 2/1
	FR	FR	DATE 7-29-86
			SHEET 1 OF 2