

Fig. 1

- Series 319, 330 and 399 single row strips may be cut to any length.
- Spring Target connectors present a large flat surface for making tangent connections to our standard .042" dia spring pin plungers. The target connectors provide an excellent gold plated conductive path back to the board mounted spring pin connector.
- Target connectors use MM #1938, #1940, #1942 and #3024 pins. See page 176 for details.
- Insulators are high temp. thermoplastic.

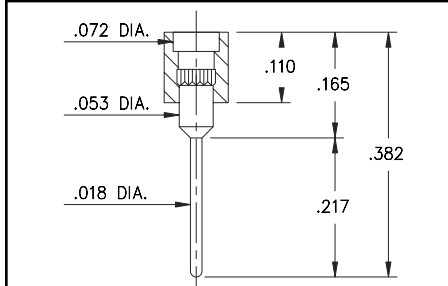
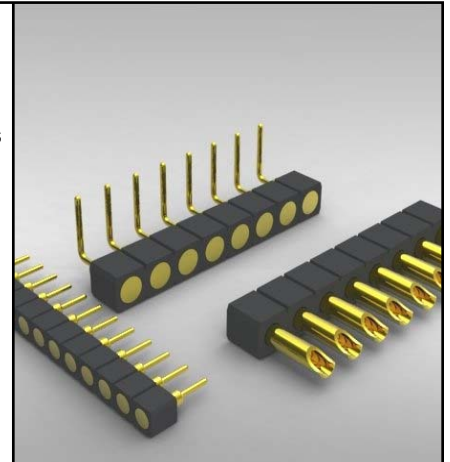


Fig. 2

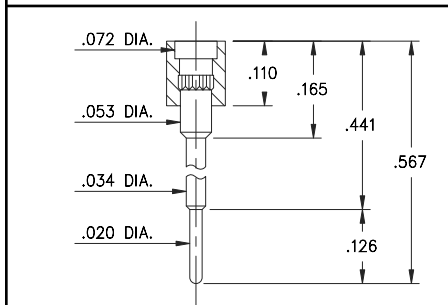


Fig. 3

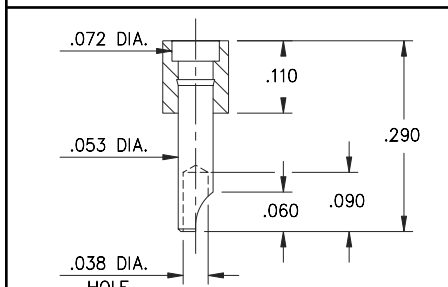


Fig. 4

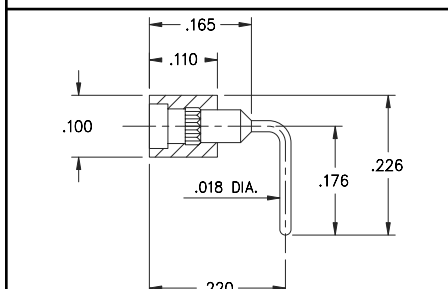


Fig. 5

Ordering Information

Fig. 1	Series 319...001	Standard Solder Tails
	319-10-1__-00-001000	Specify # of pins \rightarrow 01-64
Fig. 2	Series 319...002	Long Solder Tails
	319-10-1__-00-002000	Specify # of pins \rightarrow 01-64
Fig. 3	Series 319...005	Elevated Solder Tails
	319-10-1__-00-005000	Specify # of pins \rightarrow 01-64
Fig. 4	Series 330...240	Solder Cups
	330-10-1__-00-240000	Specify # of pins \rightarrow 01-64
Fig. 5	Series 399...008	Right Angle Solder Tails
	399-10-1__-10-008000	Specify # of pins \rightarrow 01-64

XX=Plating Code
See Below



SPECIFY PLATING CODE XX=	10			
Pin Plating	10 μ " Au			