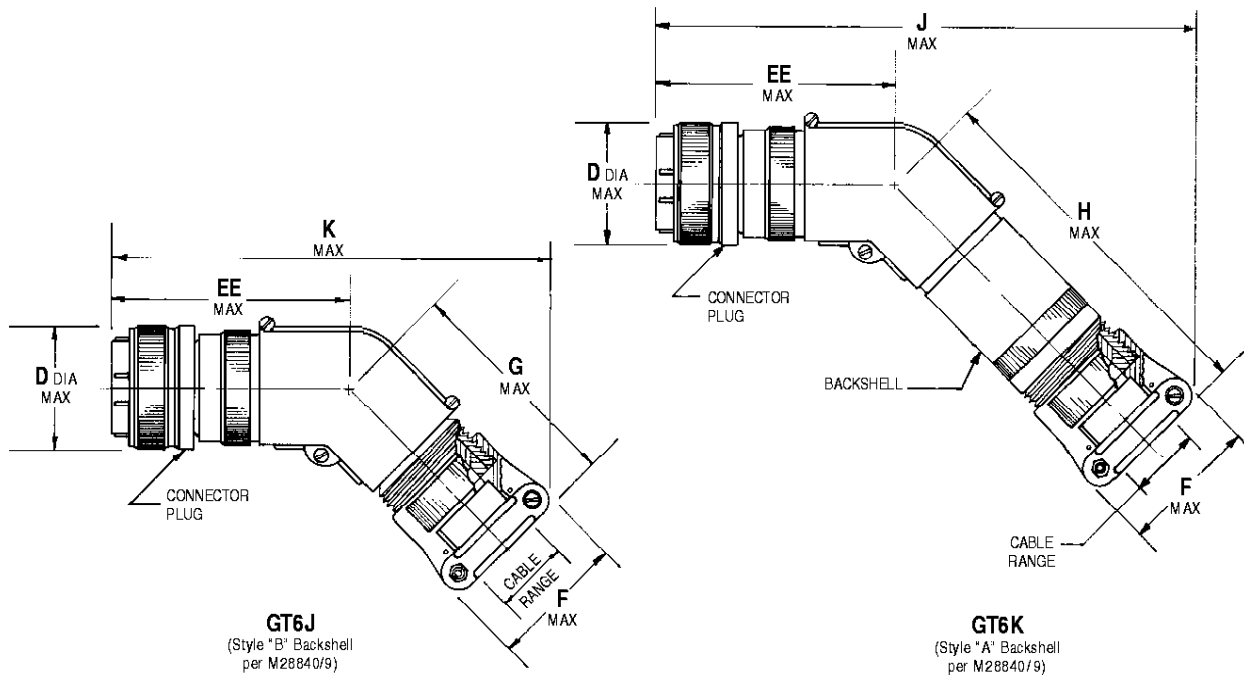


# PLUG, 45° ADAPTER ASSEMBLY FOR JACKETED CABLE ONLY



## SAMPLE CATALOG NUMBER

To complete catalog number, see detailed part number breakdown, pages 9 and 10.

**GT6**    **J**    \*\*    \*    \*\*\*    \*    \*  
 J = 45° Environmental Backshell  
 K = 45° Environmental / EMI Backshell  
 Shell Size  
 Cable Range Designator  
 A, B, C or D = Cable entry dimension See Table II, Page 23  
 Shell Polarization (See Key Polarization Chart, Page 7)  
 Contact Type  
 Insert Arrangement (Number of Contacts)

**M28840/29** } Plug, 45° Adapter Assembly for Jacketed Cable Only  
**GT6J, GT6K**

SHELL SIZE	CABLE RANGE DESIGNATOR <i>See Table II, Page 23</i>	D DIA MAX		F MAX		J MAX		EE MAX		H MAX		K MAX		G MAX	
		IN	MM	IN	MM	IN	MM	IN	MM	IN	MM	IN	MM	IN	MM
11	A	1.031	26.19	.938	23.83	7.404	188.06	3.250	82.55	5.432	137.97	5.728	145.49	3.062	77.77
	B	1.031	26.19	1.125	28.57	7.457	189.41	3.250	82.55	5.432	137.97	5.781	146.84	3.062	77.77
	C	1.281	32.54	1.312	33.32	7.727	196.27	3.375	85.72	5.557	141.15	6.051	153.70	3.187	80.95
13	A	1.031	26.19	1.125	28.57	7.457	189.41	3.250	82.55	5.432	137.97	5.781	146.84	3.062	77.77
	B	1.281	32.54	1.312	33.32	7.727	196.27	3.375	85.72	5.557	141.15	6.051	153.70	3.187	80.95
	C	1.531	38.89	1.312	33.32	7.938	201.63	3.500	88.90	5.682	144.32	6.262	159.05	3.312	84.12
15	A	1.281	32.54	1.125	28.57	7.671	194.84	3.375	85.72	5.557	141.15	5.895	152.27	3.187	80.95
	B	1.281	32.54	1.312	33.32	7.727	196.27	3.375	85.72	5.557	141.15	6.051	153.70	3.187	80.95
	C	1.531	38.89	1.312	33.32	7.938	201.63	3.500	88.90	5.682	144.32	6.262	159.05	3.312	84.12
	D	1.531	38.89	1.593	40.46	8.058	204.67	3.500	88.90	5.713	145.11	6.382	162.10	3.343	84.91
17	A	1.531	38.89	1.312	33.32	7.938	201.63	3.500	88.90	5.682	144.32	6.262	159.05	3.312	84.12
	B	1.531	38.89	1.593	40.46	8.058	204.67	3.500	88.90	5.713	145.11	6.382	162.10	3.343	84.91
	C	1.531	38.89	1.750	44.45	8.161	207.29	3.556	90.32	5.807	147.50	6.485	164.72	3.437	87.30
19	A	1.531	38.89	1.312	33.32	7.938	201.63	3.500	88.90	5.682	144.32	6.282	159.56	3.312	84.12
	B	1.781	45.24	1.750	44.45	8.371	212.62	3.625	92.07	5.932	150.67	6.695	170.05	3.562	90.47
23	A	1.781	45.24	1.593	40.46	8.272	210.11	3.625	92.07	5.838	148.28	6.596	167.54	3.468	88.09
	B	1.781	45.24	1.750	44.45	8.371	212.62	3.625	92.07	5.932	150.67	6.695	170.05	3.562	90.47
	C	1.781	45.24	2.093	53.16	8.628	219.15	3.625	92.07	6.119	155.42	6.952	176.58	3.749	95.22
25	A	1.781	45.24	1.750	44.45	8.371	212.62	3.625	92.07	5.932	150.67	6.695	170.05	3.562	90.47
	B	1.781	45.24	2.093	53.16	8.628	219.15	3.625	92.07	6.119	155.42	6.952	176.58	3.749	95.22
	C	2.031	51.59	2.093	53.16	8.841	224.56	3.750	95.25	6.244	158.60	7.165	181.99	3.874	98.40
	D	2.031	51.59	2.343	59.51	8.950	227.33	3.750	95.25	6.276	159.41	7.274	184.76	3.906	99.21
29	A	2.031	51.59	2.093	53.16	8.841	224.56	3.750	95.25	6.244	158.60	7.165	181.99	3.874	98.40
	B	2.031	51.59	2.343	59.51	8.950	227.33	3.750	95.25	6.276	159.41	7.274	184.76	3.906	99.21
33	A	2.531	64.29	2.343	59.51	9.377	238.18	4.000	101.60	6.526	165.76	7.701	195.61	4.156	106.56
	B	2.531	64.29	2.750	69.85	9.659	245.34	4.000	101.60	6.801	172.76	7.983	202.77	4.431	112.55