

SPECIFICATIONS

Mechanical

Insertion Force: 45N max.
Withdrawal Force: 25N min.
Durability: 50 Cycles.

Electrical

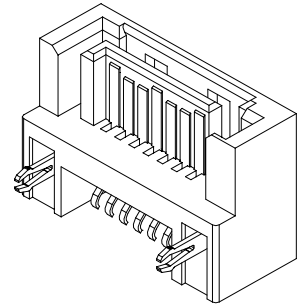
Voltage Rating: 250V.
Current Rating: 1.5A per pin.
Contact Resistance: 30 mΩ max., Δ15 mΩ max. after stress.
Dielectric Withstanding Voltage: 500V AC.
Insulation Resistance: 1000MΩ min.

Physical

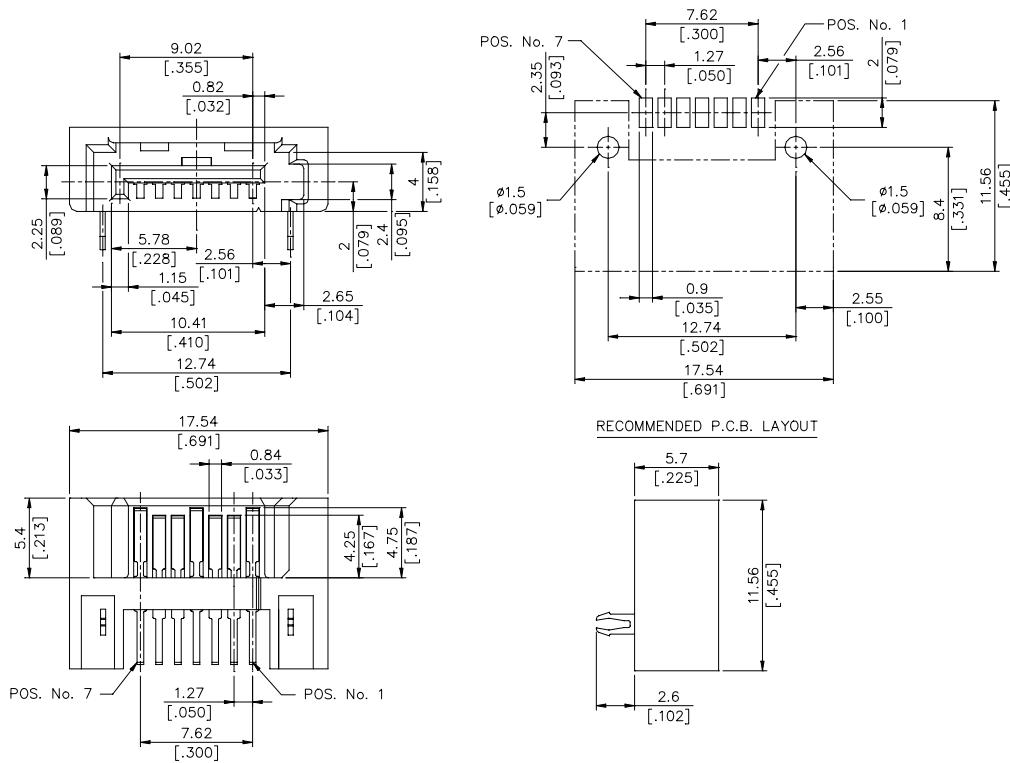
Housing: Thermoplastic, UL 94V-0 rating.
Color: See "ORDERING INFORMATION".
Contact: Copper alloy
Plating: See "ORDERING INFORMATION".
Operating Temperature: -55 to +105

S-ATA Connector

LD Series
SMT,R/A,IN-LINE Type
Plug
1.27mm [.050"] Pitch
7 Pos.



DRAWING



ORDERING INFORMATION

PRODUCT NO. : LD 1 1 07 * - S 16 2 *

- S-ATA Series
- Mating End Type
1=Host Plug
- Mounting End Type
1=SMT,R/A,IN-LINE
- No. of Pos.
07=7 Pos.
- Housing Material
NONE=PA9T,Color Black
U=PA9T,Color Blue
- Package Type
1/NONE=Tray
2=Tube
3=Tape&Reel
- Modification Code
- S-ATA
- Contact Area Plating
F=Gold Flash With RoHS COMPLIANCE
H=30u" Gold With RoHS COMPLIANCE
V=15u" Gold With RoHS COMPLIANCE