

SSC-P1 Series
PUSH-PULL COUPLING TYPE
HOUSING (for $\phi 0.9\text{mm}$)
TECHNICAL SPECIFICATIONS

Seiko Instruments Inc.

Components Sales Dept.

8, Nakase 1-Chome

Mihama-ku, Chiba-shi, Chiba-ken

261 JAPAN

Telephone : 043-211-1214

-1215

Facsimile : 043-211-8035

SSC-P1 Series PUSH-PULL COUPLING TYPE HOUSING (for ϕ 0.9mm)
TECHNICAL SPECIFICATIONS

Document Number NCD-42B3-02

39052-2309-01	March 1993
39055-2005-01	May 1993
NCD-42B3-01	February 1994
Second Edition	December 1995

Copyright 1993, 1994, 1995 by **Seiko Instruments Inc.**
All right reserved.

The information contained herein shall not reproduced or disclosed to any third party without the express written consent of **SII**.
The Specifications contained herein are subject to change without notice.

SII is a trademark of **Seiko Instruments Inc.**

Please address any questions, comments, and suggestions to:

Seiko Instruments USA Inc.

Electronics Components Division
2990 West Lomita Boulevard
Torrance, CA 90505, U.S.A.
Phone: 310-517-7780
Fax: 310-517-7792

Seiko Instruments (H.K.) Ltd.

Sales Department
4th & 5th Floor, Wyler Center 2
200 Tai Lin Pai Road, Kwai Chung
N.T., Kowloon, Hong Kong
Phone: 852-2421-8611
Fax: 852-2480-5479

Seiko Instruments Singapore pte. Ltd.

2, Marsiling Lane,
Woodlands New Town,
Singapore, 2573, Singapore
Phone: 65-2691370
Fax: 65-2699729

Seiko Instruments GmbH

OFC Division
Siemensstraße 9b
D-63263 Neu-Isenburg, Germany
Phone: 06102-297-0
Fax: 06102-297-211

Seiko Instruments Taiwan Inc.

Sales Department
5F-1, No.99, Sec. 2, Chung Shan
Rd.
Taipei 104, Taiwan, R.O.C.
Phone: 02-563-5001, 523-5111
Fax: 02-521-9519

TABLE OF CONTENTS

Section	Page
1. PROVISION	1
1.1 Application Limit	1
2. PARTS NUMBER	1
3. GENERAL SPECIFICATIONS	2
3.1 Parts and Materials	2
3.2 Physical Dimensions	2
3.3 General Tolerances	2
4. PACKING	3

Table

Table 1	Parts Number	1
Table 2	Parts and Materials	2
Table 3	General Tolerance	2

Figure

Figure 1	SSC-P1 Housing	4
Figure 2 to 7	Part Dimensions	5 to 7

1. PROVISION

1.1 Application Limit

These specifications apply to the SSC-P1 PUSH-PULL COUPLING TYPE HOUSING
(for ϕ 0.9mm) supplied by **SII**.

2. PARTS NUMBER

Parts Number of the Housing is Shown in Table 1.

Table 1 Parts Number

MODEL Number		Type Number							
SSC-P1		5	1	1	4	2	1	0	0

Hood Color	
0	No hood
2	Red
4	Grey
5	Blue
6	Deep-Green
8	Park-Green

Hood I.D.	
0	No hood
1	ϕ 0.9mm

Marking of Grip	
1	SII / SSC-P

(Required)	
0 0	

Length	
1	33mm

Package	
2	Individual Package
3	Separate Package

Cap	
0	No Cap
4	Blue PVC

3. GENERAL SPECIFICATIONS

3.1 Parts and Materials

Parts and the materials are shown in Table 2.

Table 2 Parts and materials

No.	Part Name	Q'ty	Material	Notes
①	Grip	1	Plastics	Blue , UL94 V-0
②	Plug frame	1	Plastics	White , UL94 V-0
③	Spring	1	Stainless Steel	- -
④	Stop ring	1	Brass	Nickel Plating
⑤	Hood	(1)	Synthetic Rubber	Hood Color Shows Table 1, UL94 V-0.
⑥	Cap	(1)	PVC	Blue

3.2 Physical Dimensions

Figure 1 shows the assembled state of SSC-P1.

Figure 2 to 7 show the part dimension.

- In accordance with JIS C5973 F04 type connectors

3.3 General Tolerances

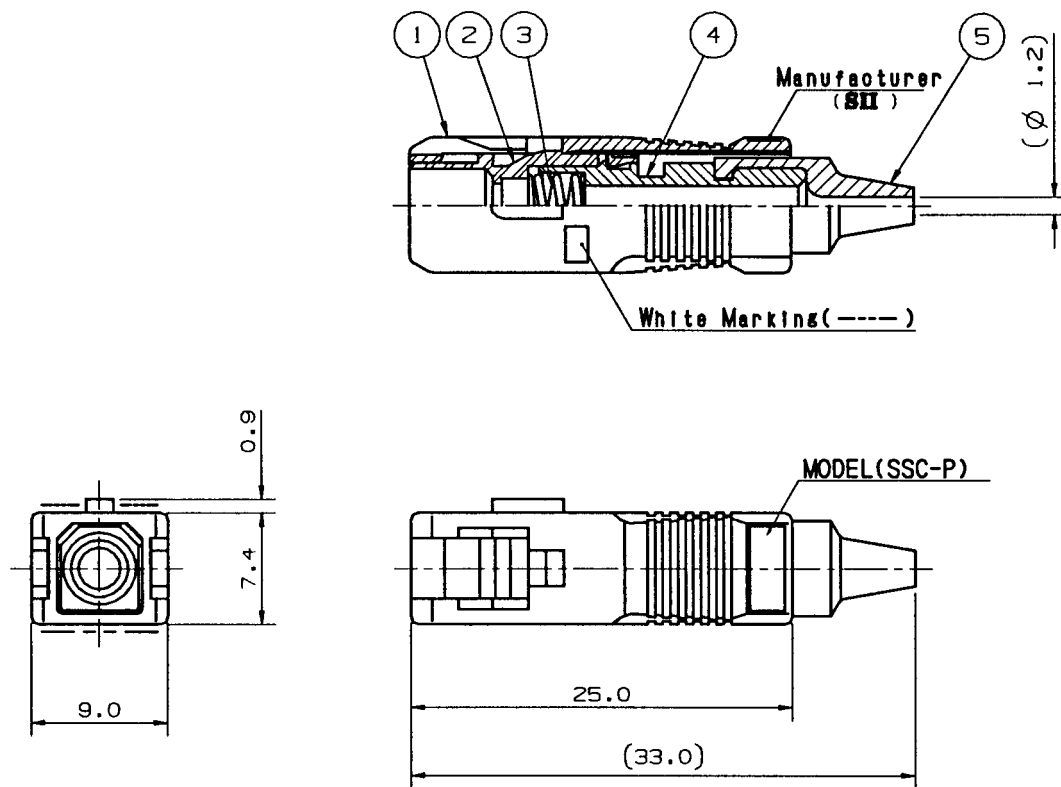
Permissible deviation in dimensions without tolerance indication is in accordance with JIS B 0405 class m, as shown in Table 3.

Table 3 General Tolerance (JIS B 0405 class m)

Basic size step (mm)		Permissible deviation (mm)
Over	Under	
0.5	3	± 0.1
3	6	± 0.1
6	30	± 0.2
30	120	± 0.3

4. PACKING

The product is packed to prevent damage during shipping.

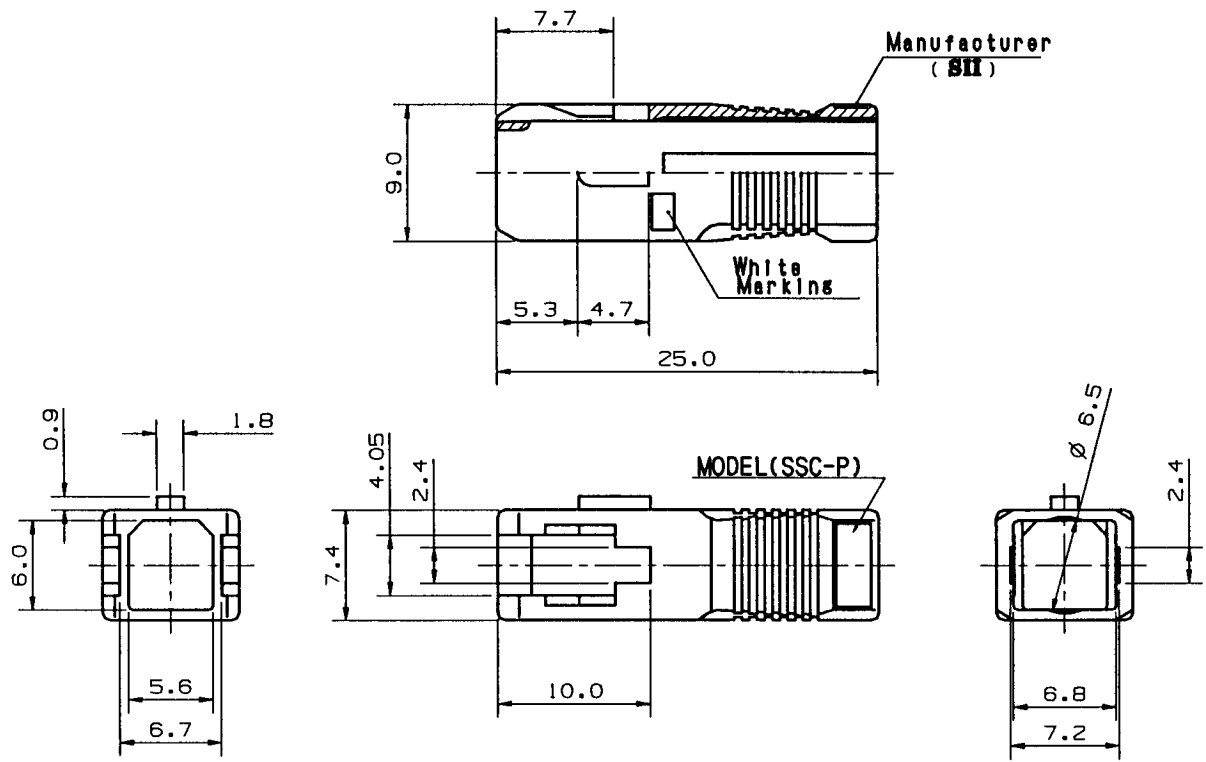


note.1: This drawing Shows the Tentatively assembled condition. In practice, the housing is not assembled like this.

note.2: This drawing does not include Caps.

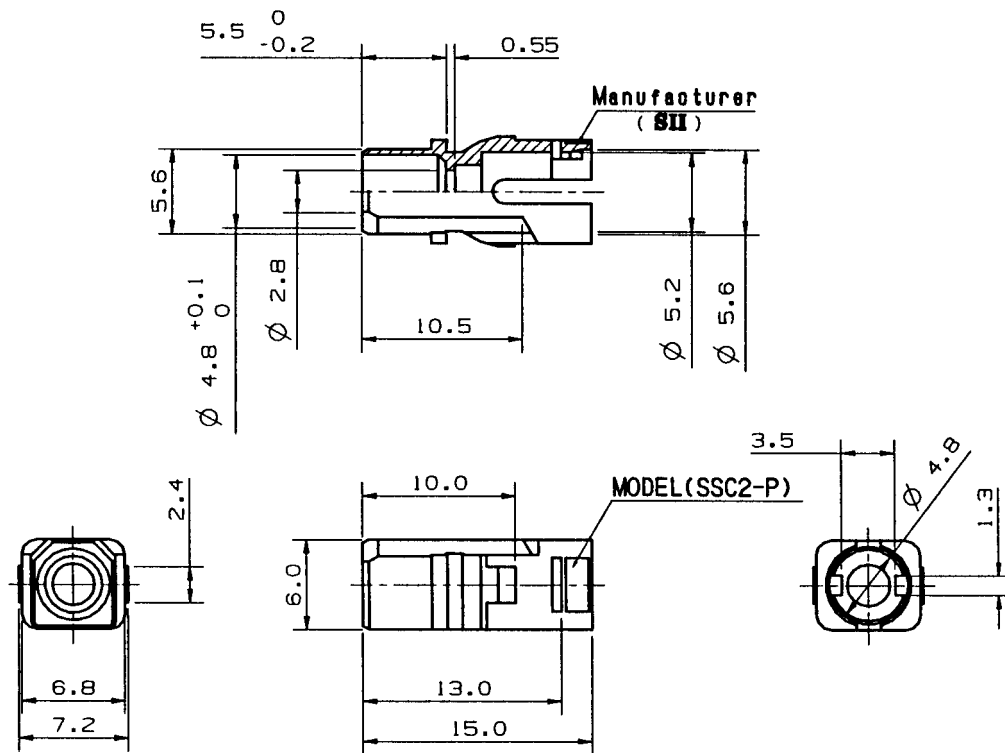
Unit: mm

Figure 1 SSC-P1 HOUSING



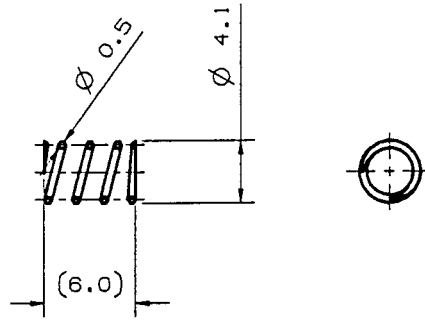
Unit: mm

Figure 2 ① Grip



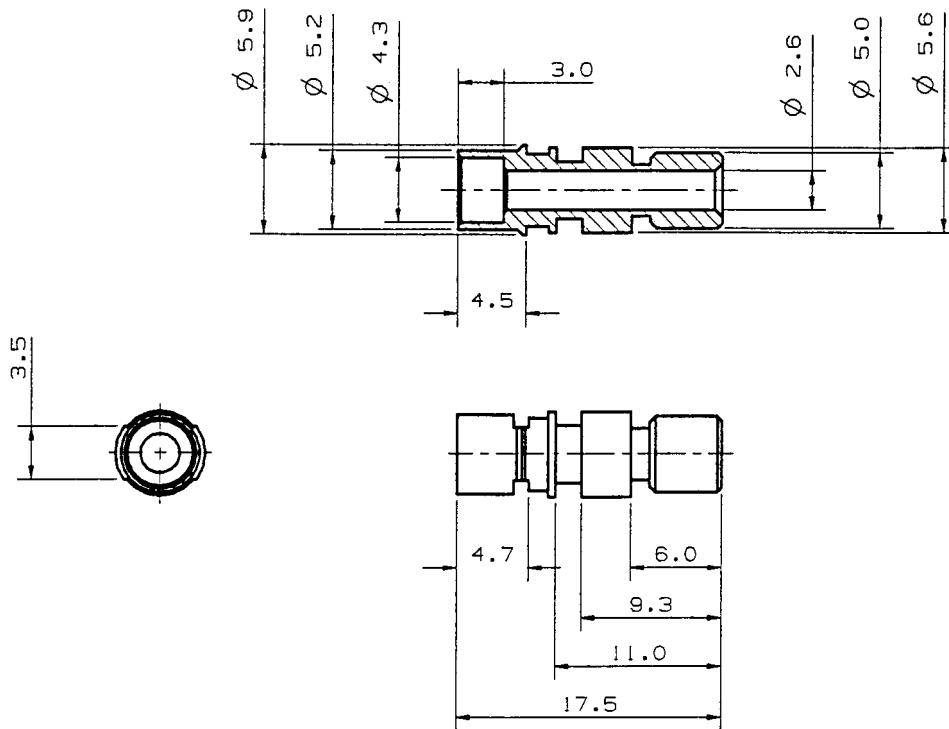
Unit: mm

Figure 3 ② Plug frame



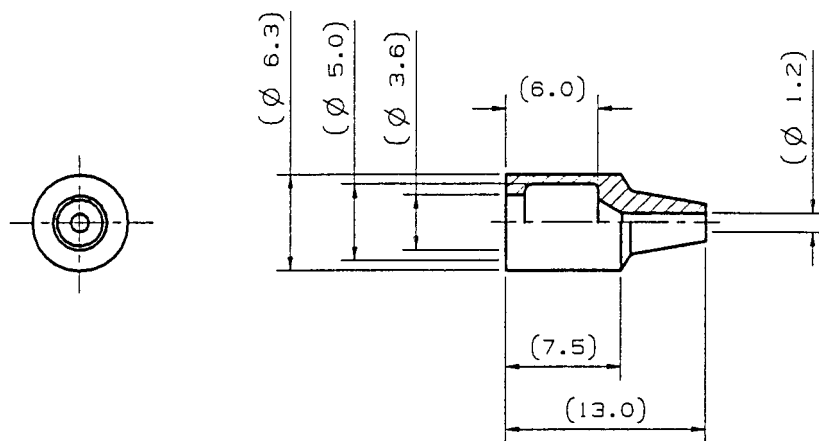
Unit: mm

Figure 4 ③ Spring



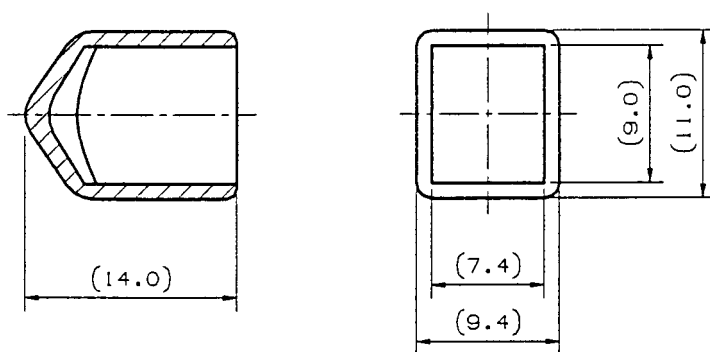
Unit: mm

Figure 5 ④ Stop ring



Unit: mm

Figure 6 ⑤ Hood



Unit: mm

Figure 7 ⑥ Cap