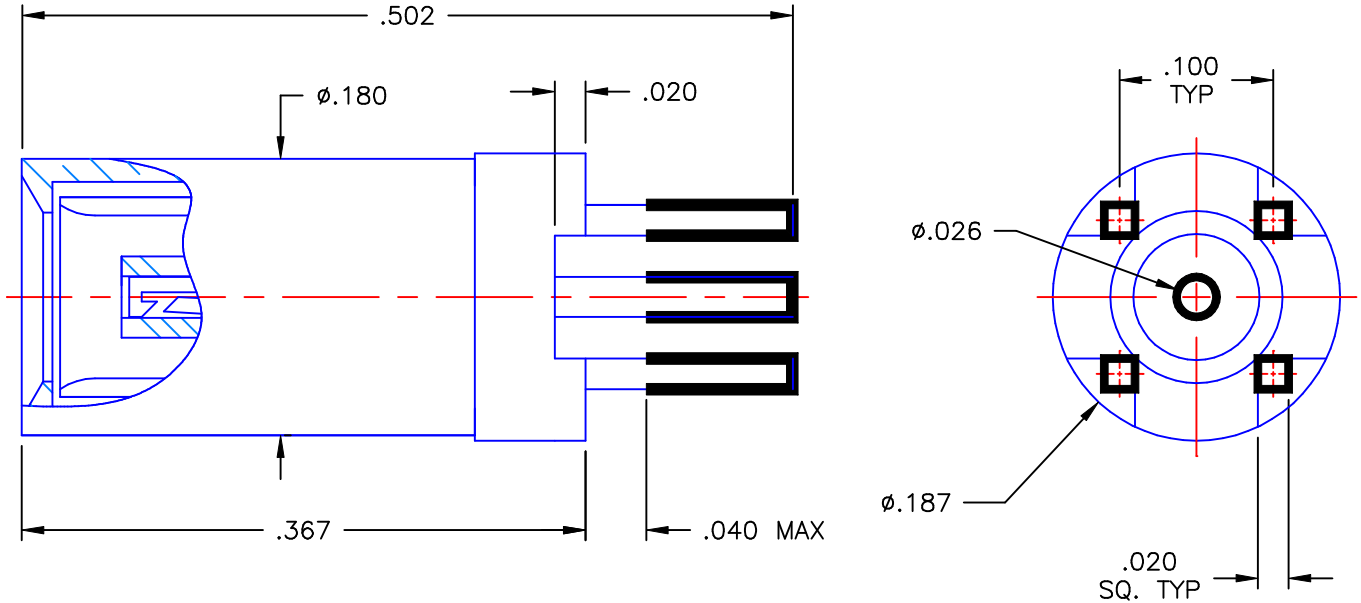


PROPRIETARY INFORMATION
 NOT TO BE RELEASED
 WITHOUT WRITTEN PERMISSION
 FROM AN AUTHORIZED
 REPRESENTATIVE OF
 APPLIED ENGINEERING PRODUCTS

REVISIONS			
REV	DESCRIPTION	DATE	APPROVED
-	INITIAL RELEASE	11/21/05	K.P.
A	ECO #6239	05/12/06	K.P.



THIS CONNECTOR ONLY MATES WITH 0023-1511-040.


NOTES:
 DESIGNED WITH A $\pm.030$ MATED TRAVEL.

MATERIALS:

1. BODY & CONTACT = BERYLLIUM COPPER PER ASTM B196, ALLOY C17300, TEMPER TD04.
2. INSULATOR = VIRGIN WHITE TEFLON PER ASTM D1710, GRADE 1, TYPE I, CLASS "B".
3. SLEEVE = BRASS PER ASTM B16, ALLOY C36000, TEMPER H02.

FINISHES:

1. BODY & SLEEVE = GOLD PLATE PER MIL-G-45204, TYPE II, CLASS 0, GRADE C, OVER $.00010$ TO $.00020$ COPPER STRIKE PER MIL-C-14550.
2. CONTACT = GOLD PLATE PER MIL-G-45204, TYPE II, CLASS 1, GRADE C, OVER $.00010$ TO $.00020$ STRESS FREE SULFAMATE NICKEL PER QQ-N-290.
3. TIN DIP = AEP STANDARD CLAUSE 100. Sn63 SOLDER DIP $.0002$ -. $.0005$ THICK.

UNLESS OTHERWISE SPECIFIED DIMENSIONS ARE IN INCHES TOLERANCES ON		DWN: K.P.	DATE 11/21/05	 APPLIED ENGINEERING PRODUCTS 104 John W. Murphy Dr. New Haven, CT 06513
		CHKD: A.D.M.	DATE 11/21/05	
DECIMAL	ANGLE	APVD: D.J.C.	DATE 11/21/05	
				SSLB TYPE INTERFACE WITH EXTRA LONG MATING DEPTH STRAIGHT PLUG P.C.B. MOUNT TINNED RECEPTACLE
REFERENCE:		MATERIALS & FINISHES: SEE NOTES		SIZE A
ORIGINATOR: K.P. DATE: 11/21/05				FSCM NO. 19505
				DWG NO. 0022-1512-040
				REV A
		SCALE 8:1		THIRD ANGLE PROJECTION
				SHEET 1 OF 1

0022-1512-040