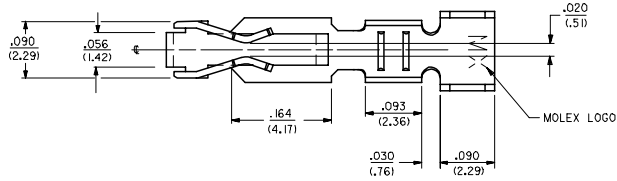
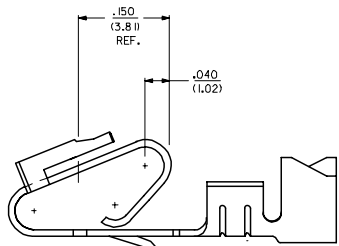


CARRIER STRIP DETAIL

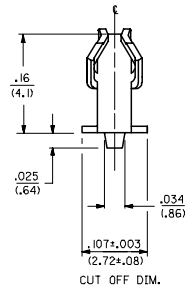


- NOTES:
 1. MATERIAL: SEE LEGEND
 2. FINISH:
 *909 - OVERALL HOT TIN DIP: .000100/(0.00254) MIN.
 102 - OVERALL TIN: .000200/(0.00508) MIN.
 OVERALL COPPER: .000100/(0.00254) MIN.
 132 - OVERALL TIN: .000200/(0.00508) MIN.
 OVERALL COPPER: .000200/(0.00508) MIN.
 503 - OVERALL HARD GOLD: .000030/(0.00076) MIN.
 OVERALL NICKEL: .000050/(0.00127) MIN.
 550 - SELECT HARD GOLD: .000015/(0.00038) MIN.
 OVERALL NICKEL: .000030/(0.00076) MIN.
 OVERALL HARD GOLD FLASH: .000002/(0.00005) MIN.
 555 - SELECT HARD GOLD: .000015/(0.00038) MIN.
 OVERALL NICKEL: .000030/(0.00076) MIN.
 558 - SELECT HARD GOLD: .000030/(0.00076) MIN.
 OVERALL NICKEL: .000050/(0.00127) MIN.
 OVERALL HARD GOLD FLASH: .000002/(0.00005) MIN.
 561 - SELECT HARD GOLD: .000030/(0.00076) MIN.
 OVERALL NICKEL: .000050/(0.00127) MIN.
 * THE PRIMARY SHIPPING CARTON WILL BE LABELED "COMPLIANT TO RoHS DIRECTIVE 2002/95/EC AND ELV ANNEX II OF DIRECTIVE 2000/53/EC." CARTONS WITHOUT THIS LABEL MAY CONTAIN PRODUCT WITH TIN-LEAD PLATING.

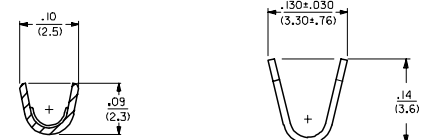
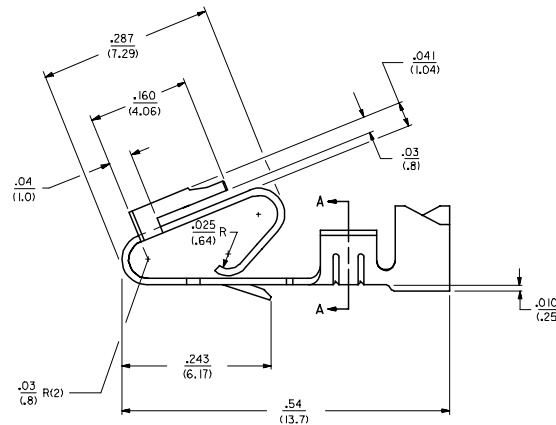
3. PRODUCT SPECIFICATION: PS-40-02
 4. PACKAGING SPECIFICATION: CHAIN FORM SEE PK-6838-001
 5. TERMINAL FOR USE IN HOUSING NO'S. 6442 AND 41695
 6. THIS PART WITH CRIMP FOR 22-26 AWG. WIRE. SEE DWG. NO. 7258
 7. CRIMP FOR 18 TO 20 GA. WIRE WITH MAX. INSULATION DIA. OF .100/(2.54) STRIP LENGTH OF .125/(3.18) / (3.18/2.54)
 8. DIMENSIONS GIVEN ACROSS CENTERLINES ARE SYMMETRICAL ABOUT THOSE CENTERLINES WITHIN HALF THE TOTAL TOLERANCE.



SELECTIVE PLATING LOCATION

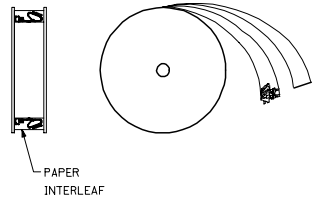


CUT OFF DIM.

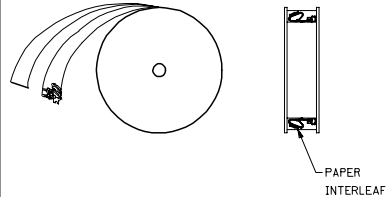


SECTION A-A

- LEGEND: 6838- () () () ()
 MATERIAL:
 (.27) / .0106 THK
 BLANK=BRASS
 A=PHOS BRONZE
 WINDING
 A= PER DETAIL A
 BLANK= PER DETAIL B
 FORM
 BLANK= CHAIN
 L= LOOSE
 PLATING
 SEE NOTE 2



WINDING DETAIL 'A'



WINDING DETAIL 'B'

REVISE NOTES REC NO: UCP2006-0117 2005/07/28 DRAWN: JUNE 2005/08/02 CHKD: ADRI 2005/08/05 APPROV: SMITH	DESCRIPTION TRIFURC CRIMP TYPE .156 CENTERS 18 TO 20 AWG WIRE	QUALITY SYMBOLS ▽=0 ▽=0		GENERAL TOLERANCES (UNLESS SPECIFIED) mm INCH 4 PLACES ± .010 ± .0004 3 PLACES ± .010 ± .0004 2 PLACES ± 0.25 ± .015 1 PLACE ± 0.36 ± .014 ANGULAR ± 1/2°		DIMENSION STYLE IN/MM		SCALE ---	DESIGN UNITS INCH	THIRD ANGLE PROJECTION	SHEET NO. 1 OF 2	
		DRAWN BY GUZIK DATE 11/15/89		CHECKED BY PATEL DATE 11/15/89		APPROVED BY LENZ DATE 11/15/89		MATERIAL NO. SEE CHART		DOCUMENT NO. SD-6838		
		DRAFT WHERE APPLICABLE MUST REMAIN WITHIN DIMENSIONS		SIZE D		THIS DRAWING CONTAINS INFORMATION THAT IS PROPRIETARY TO MOLEX INCORPORATED AND SHOULD NOT BE USED WITHOUT WRITTEN PERMISSION						

6838-(*)**			6838-A(*)**														
PART NO.	ENG. NO.	PER E.S.	PART NO.	ENG. NO.	PER E.S.	PART NO.	ENG. NO.		PART NO.	ENG. NO.		PART NO.	ENG. NO.		PART NO.	ENG. NO.	
08-50-0187	6838-(P909)		08-53-1101	6838-A(999)													
08-50-0189	6838-(P909)L		08-53-1102	6838-A(999)L													
08-50-0275	6838-(P909)-A		08-58-0187	6838-A(P558)	MAKE FROM												
08-50-0026	6838-(P102)		08-58-0189	6838-A(P558)L	6838-A(P561)												
	6838-(P102)L		08-60-0001	6838-A(132)													
08-50-0028	6838-(102)		08-60-0002	6838-A(132)L													
08-50-0029	6838-(102)L		08-58-0102	6838-A(558)	MAKE FROM												
08-51-0106	6838-(999)			6838-A(558)L	6838-A(561)												
08-51-0107	6838-(999)L		08-58-0108	6838-A(503)													
			08-58-0109	6838-A(503)L													
			08-52-0112	6838-A(P909)													
			08-52-0113	6838-A(P909)L													
			08-50-0024	6838-A(102)													
			08-50-0251	6838-A(102)L													
			08-58-0105	6838-A(P555)													
			08-58-0106	6838-A(P555)L	ES-276-P555												
			08-58-0110	6838-A(P561)													
			08-58-0111	6838-A(P561)L	ES-276-P561												
			08-58-0118	6838-A(561)													
			08-58-0119	6838-A(561)L													
			08-58-0131	6838-A(550)	MAKE FROM												
			08-58-0132	6838-A(550)L	6838-A(P555)												

CHANGE TO ME10 EC NO: UCP2005-0959 DRAWN BY: DRWINDRATNOL 2004/11/16 CHECKED BY: CHKCD-SAMIEC 2006/07/26 APPR: MWARGULLIS 2009/11/07 AP	QUALITY SYMBOLS ▽=0 ▽=0	GENERAL TOLERANCES (UNLESS SPECIFIED) <table border="1"> <tr> <th></th> <th>mm</th> <th>INCH</th> </tr> <tr> <td>4 PLACES</td> <td>± .005</td> <td>± .0002</td> </tr> <tr> <td>3 PLACES</td> <td>± .002</td> <td>± .0001</td> </tr> <tr> <td>2 PLACES</td> <td>± .001</td> <td>± .00005</td> </tr> <tr> <td>1 PLACE</td> <td>± .0005</td> <td>± .00002</td> </tr> </table>		mm	INCH	4 PLACES	± .005	± .0002	3 PLACES	± .002	± .0001	2 PLACES	± .001	± .00005	1 PLACE	± .0005	± .00002	DIMENSION STYLE IN/MM	SCALE --- INCH	DESIGN UNITS INCH	THIRD ANGLE PROJECTION
		mm	INCH																		
	4 PLACES	± .005	± .0002																		
	3 PLACES	± .002	± .0001																		
2 PLACES	± .001	± .00005																			
1 PLACE	± .0005	± .00002																			
DRAFT WHERE APPLICABLE MUST REMAIN WITHIN DIMENSIONS	MATERIAL NO. LENZ	DRAWN BY GUZIK	DATE 11/15/89	CHECKED BY PATEL	DATE 11/15/89	TITLE TRIFURCON TERMINAL CRIMP TYPE															
SEE CHARTS	DOCUMENT NO. SD-6838	APPROVED BY LENZ	DATE 11/15/89	MOLEX INCORPORATED	SHEET NO. 2	THIS DRAWING CONTAINS INFORMATION THAT IS PROPRIETARY TO MOLEX INCORPORATED AND SHOULD NOT BE USED WITHOUT WRITTEN PERMISSION															