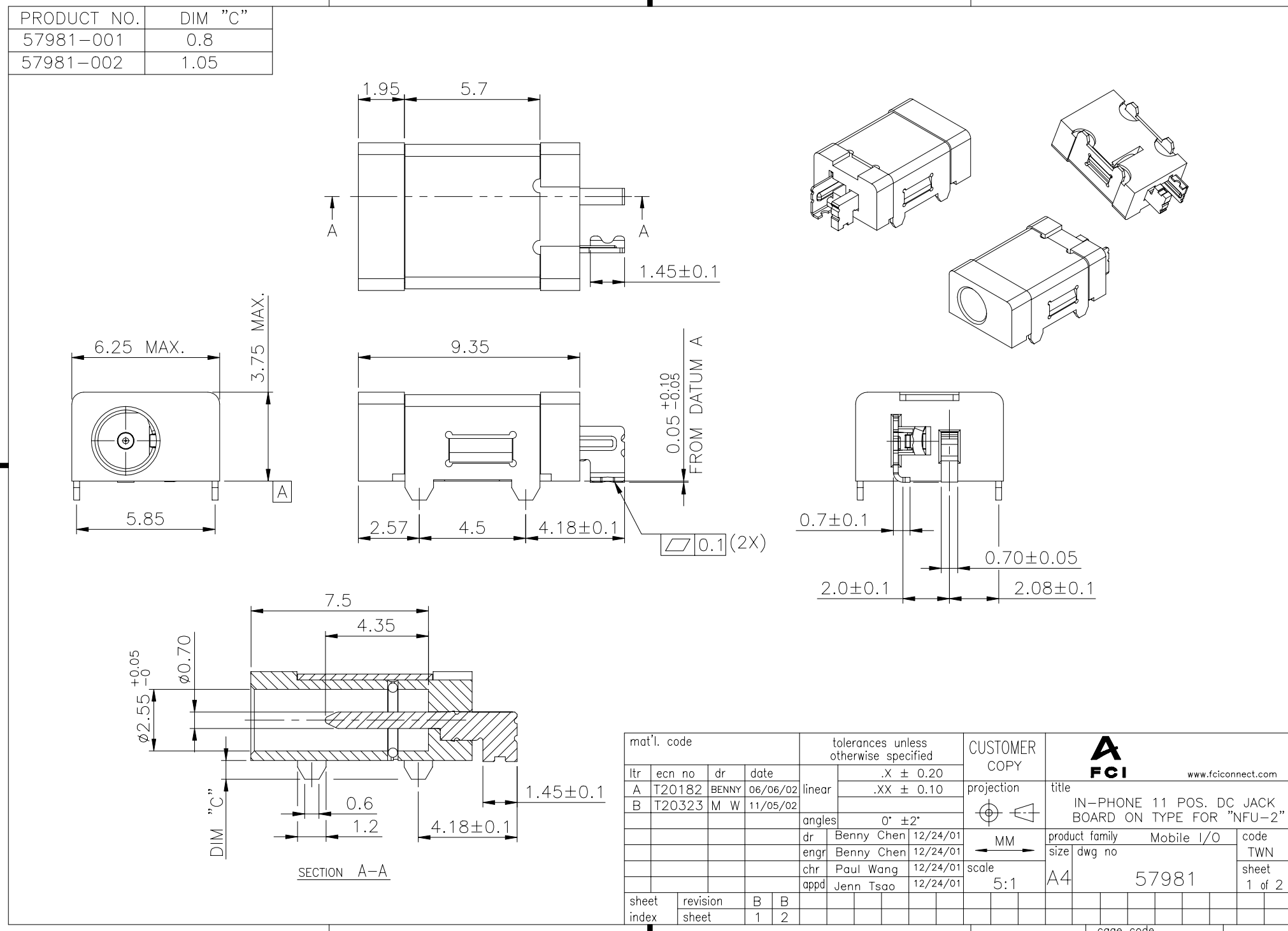


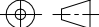
A

FCI

All rights strictly reserved. Reproduction or issue to third parties in any form whatever is not permitted without written authority from the proprietor. Property of FCI. Copyright FCI.

Tous droits strictement reserves. Reproduction ou communication a des tiers interdite sous quelque forme que ce soit sans autorisation écrite du propriétaire. Propriete de c FCI. Droits de reproduction FCI.



mat'l. code				tolerances unless otherwise specified				CUSTOMER COPY		<div><div><div>A</div><div>FCI</div></div><div>www.fciconnect.com</div></div>							
ltr	ecn no	dr	date	linear	.X ± 0.20				projection	title IN-PHONE 11 POS. DC JACK BOARD ON TYPE FOR "NFU-2"							
A	T20182	BENNY	06/06/02		.XX ± 0.10												
B	T20323	M W	11/05/02														
				angles	0° ±2°												
				dr	Benny Chen	12/24/01	MM ←→	product family		Mobile I/O		code					
				engr	Benny Chen	12/24/01		size		dwg no		TWN					
				chr	Paul Wang	12/24/01		scale	A4		57981		sheet 1 of 2				
				appd	Jenn Tsao	12/24/01											
sheet index	revision sheet		B 1	B 2													

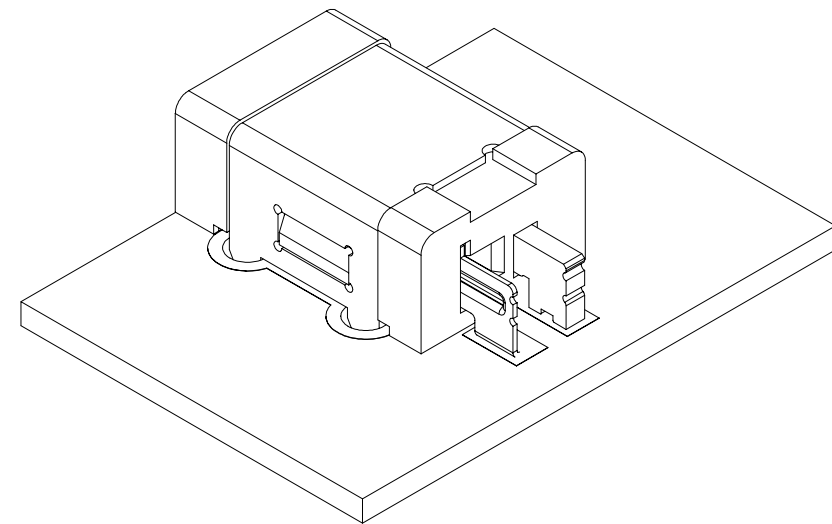
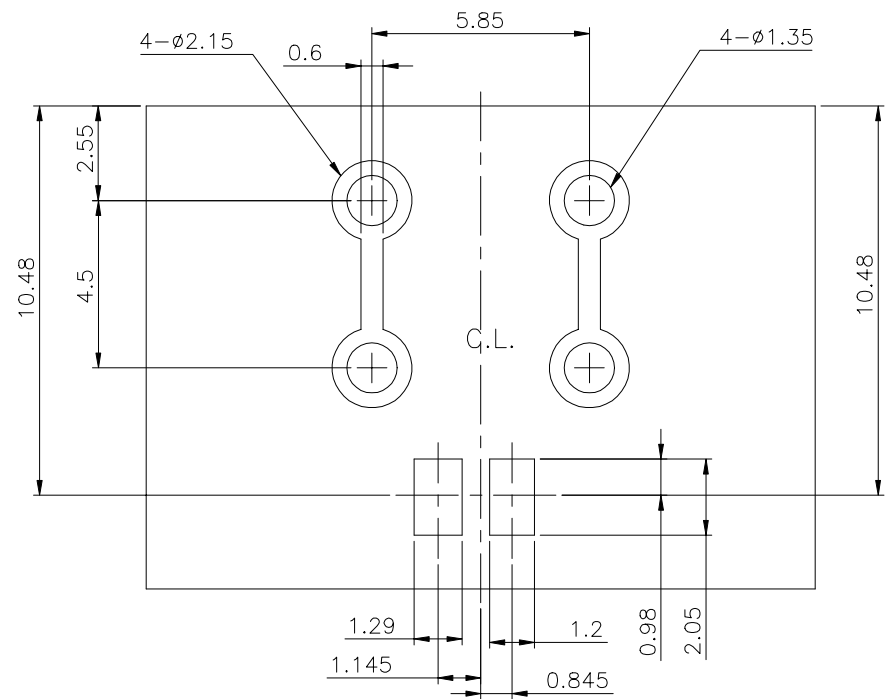
ACAD

PDM: Rev:B


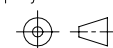

STATUS:Released

Printed Jun 16, 2004

RECOMMENDED LAYOUT



SCALE 8:1

mat'l. code				tolerances unless otherwise specified				CUSTOMER COPY		<div> www.fciconnect.com</div>					
ltr	ecn no	dr	date	linear	.X ± 0.20				projection 	title IN-PHONE 11 POS. DC JACK BOARD ON TYPE FOR "NFU-2"					
B					.XX ± 0.10										
					angles 0° ±2°										
				dr	Benny Chen	12/24/01		product family Mobile I/O				code			
				engr	Benny Chen	12/24/01		size dwg no				TWN			
				chr	Paul Wang	12/24/01		A4 57981				sheet 2 of			
				appd	Jenn Tsao	12/24/01	scale 5:1								
sheet index	revision sheet														