

AMPLIMITE HD-20 Filtered Connectors—Straight Posted

Receptacle over Receptacle

Material and Finish:

Shell—Steel, tin plated

Housing—94V-0 rated thermoplastic, black

Threaded Inserts—Brass, unplated

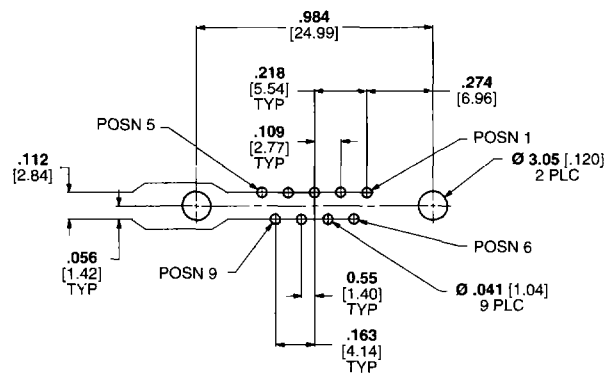
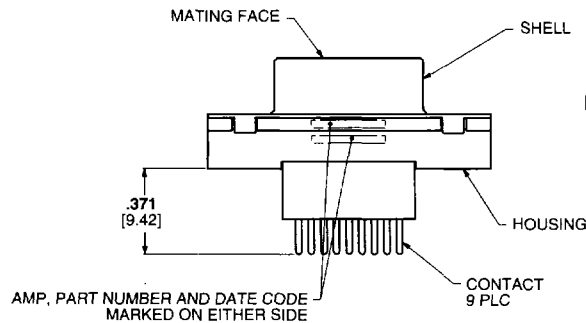
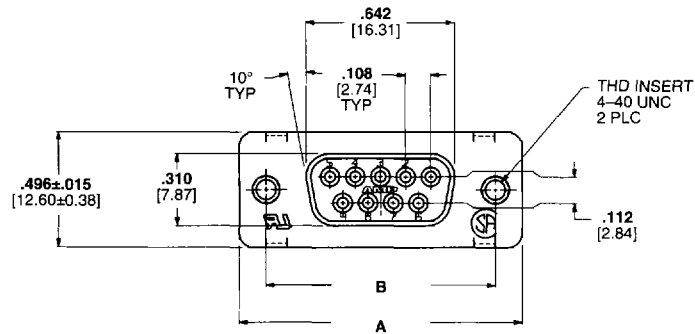
Female Screwlocks—Zinc

Socket Contacts (Posted)—

Phosphor bronze, plated as follows:

.000030 [0.00076] gold on mating end,
tin-lead on termination end, with entire
contact .000030 [0.00076] (min.)
nickel underplated

9 Position Receptacle*- Ferrite Block with front metal shell



Contact Arrangement and PC Board Mounting Specifications

Shell size	No. of Positions	Ferrite Thickness	Dimensions		Part Number
			A	B	
1	9	.135 [3.43]	1.216 [30.89]	.984 [24.99]	Call**
		.240 [6.10]	1.216 [30.89]	.984 [24.99]	267218-1

Notes: *Available in all plastic versions

**For further information, contact the AMP Product Information Center 1-800-522-6752

All versions available in plug format

Standard mounting style is threaded inserts. Also available with standard mounting holes, retention inserts, or fixed female screwlocks.

AMPLIMITE HD-20 Filtered Connectors-Straight Posted (Continued)

Receptacle over Receptacle

Material and Finish:

Shell—Steel, tin plated

Housing—94V-0 rated thermoplastic, black

Threaded Inserts—Brass, unplated

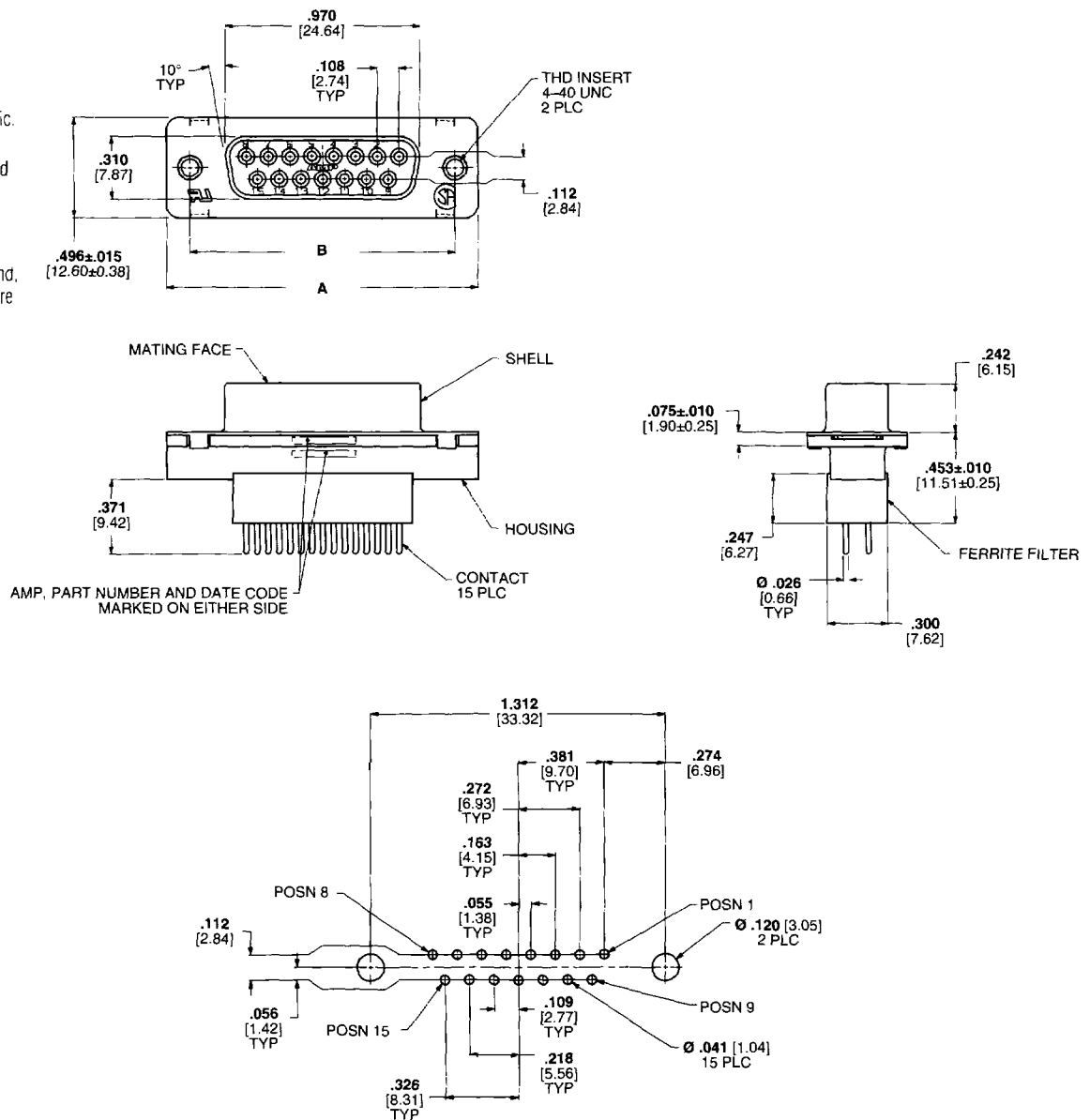
Female Screwlocks—Zinc

Socket Contacts (Posted)—

Phosphor bronze, plated as follows:

.000030 [0.00076] gold on mating end, tin-lead on termination end, with entire contact .000030 [0.00076] (min.) nickel underplated

15 Position Receptacle*- Ferrite Block with front metal shell



Contact Arrangement and PC Board Mounting Specifications

Shell size	No. of Positions	Ferrite Thickness	Dimensions		Part Number
			A	B	
2	15	.135 [3.43]	1.541 [39.14]	1.312 [33.33]	267397-1
		.247 [6.27]	1.541 [39.14]	1.312 [33.33]	267219-1

Notes: *Available in all plastic versions

All versions available in plug format

Standard mounting style is threaded inserts. Also available with standard mounting holes, retention inserts, or fixed female screwlocks.

