

## FEATURES AND SPECIFICATIONS

### Features and Benefits

- Molded-in identification for voltage and pin #1
- Dual ejector latches for easy module removal
- Module pre-alignment feature prevents mismatching
- Palladium Nickel with Gold flash plating for improved reliability
- Stamped and formed contacts reduce debris at interface
- Added contact wide for improved reliability

### Reference Information

Product Specification: PS-71243  
 Packaging: Tray  
 UL File No.: E29179  
 CSA File No.: LR 19980A-366  
 Mates With: JEDEC MO-206 modules  
 Designed In: Inches

### Electrical

Voltage: 100V  
 Current: 1.0A  
 Contact Resistance: 30mΩ max.  
 Dielectric Withstanding Voltage: 500V AC  
 Insulation Resistance: 1000 MΩ min.

### Mechanical

Mating Force: 1.6N (0.34 lb)  
 Durability: 25 cycles min.

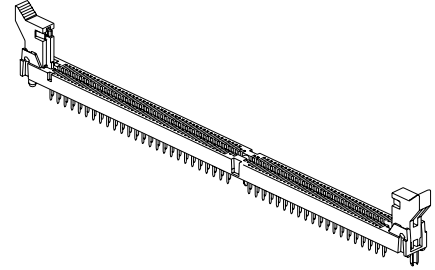
### Physical

Housing and Latch: High-temperature resistant thermoplastic, UL 94V-0  
 Contact: Phosphor Bronze  
 Plating: Selective Palladium Nickel with Gold flash with Tin/Lead on solder tails  
 Operating Temperature: -40 to +85°C

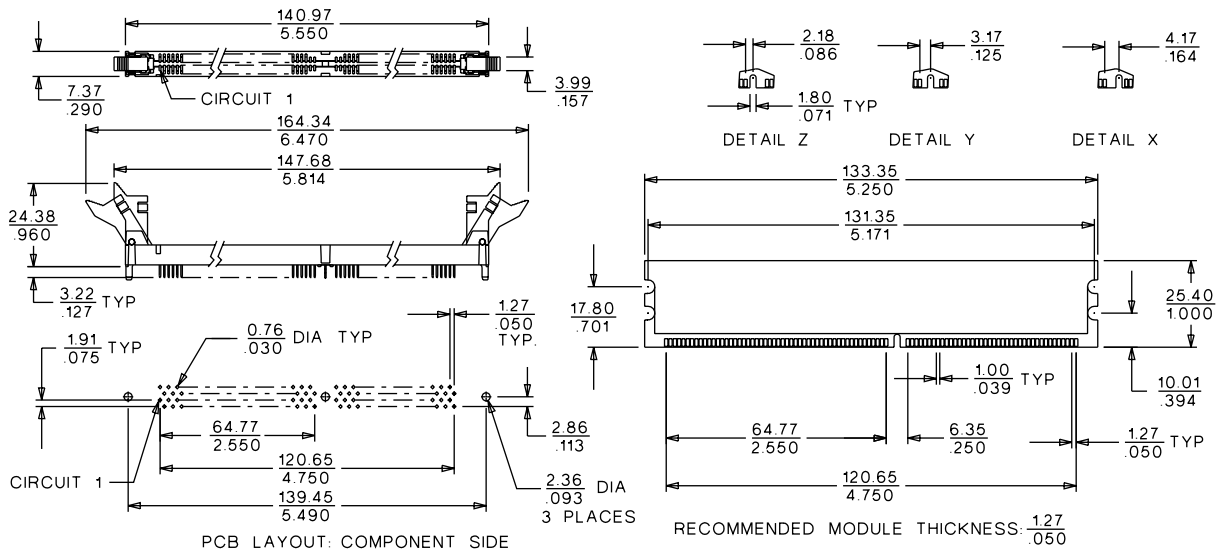
# molex® 1.27mm (.050") Pitch DDR DIMM Socket

## 71243

## Vertical, Single Key



## CATALOG DRAWING (FOR REFERENCE ONLY)



## ORDERING INFORMATION AND DIMENSIONS

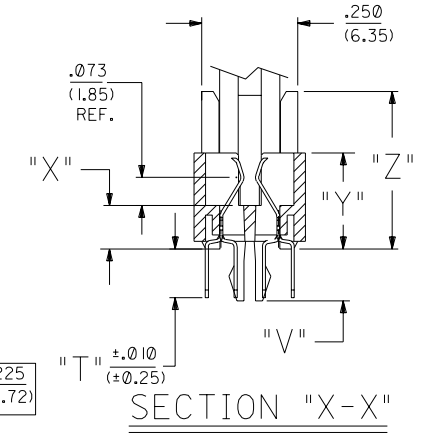
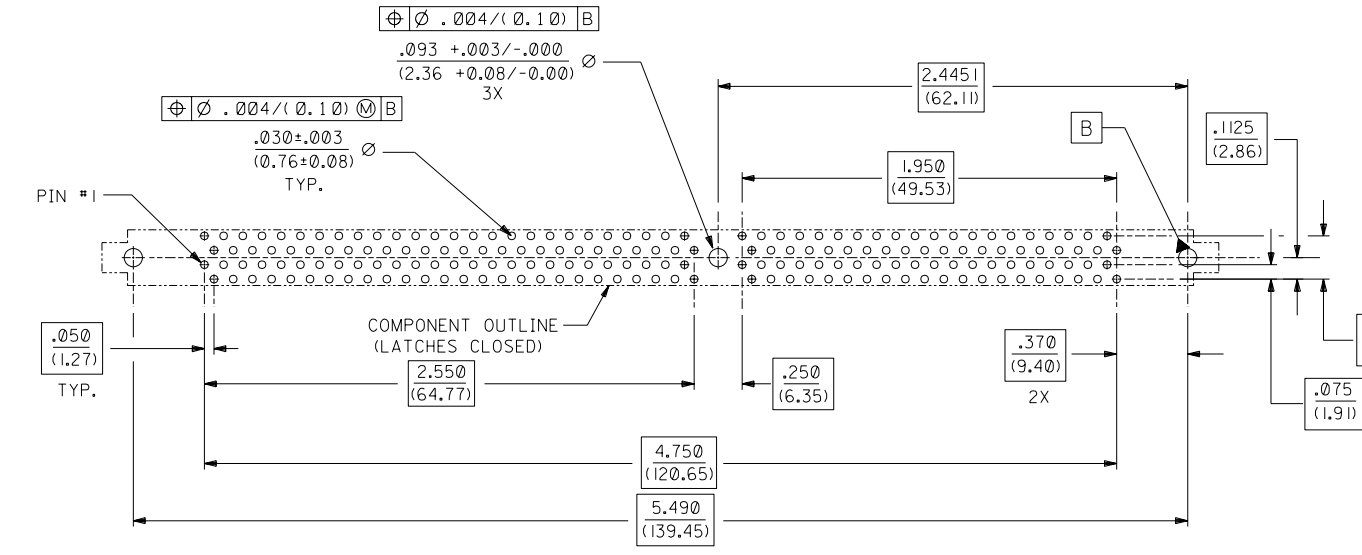
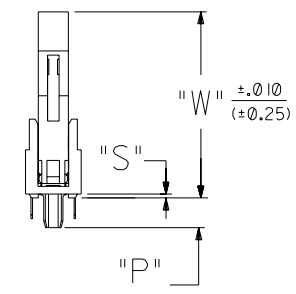
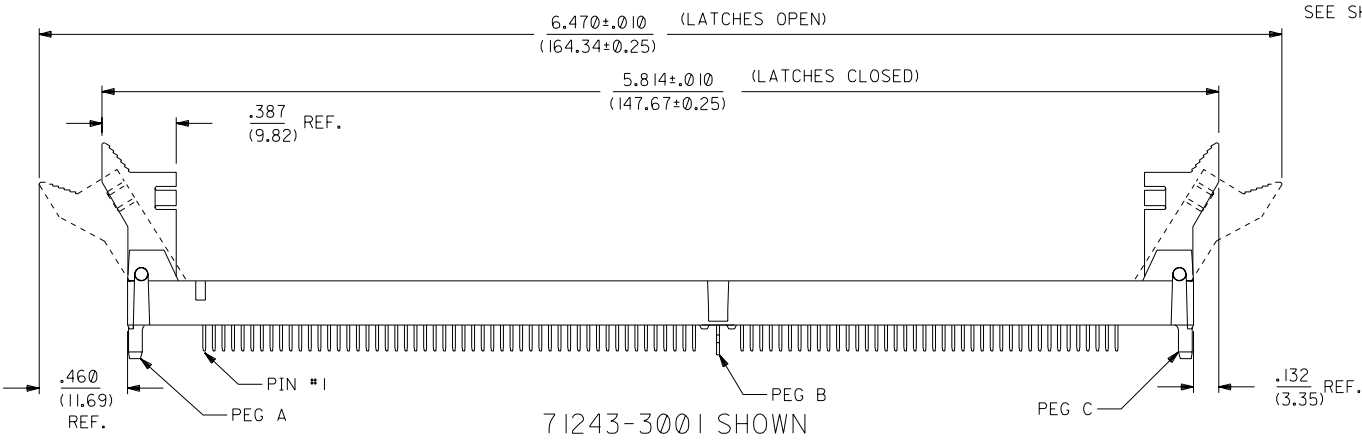
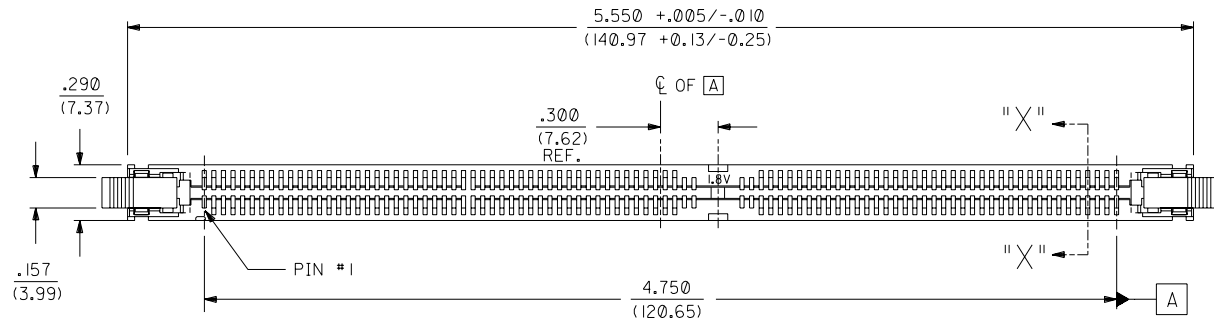
Circuits	Order No.	Voltage Key	Voltage
184	71243-3001	Detail Y	1.8V
	71243-3002	Detail Z	2.5V
	71243-3003	Detail X	3.3V

Sockets and Edge Connectors

71243

NOTES:  
 1. CARD SLOT ACCEPTS  $.050 \pm .004$  (1.27 $\pm$ 0.10) MODULE THICKNESS. (MEASURED OVER P.C. PADS).  
 2. ALL PEGS ARE INTERFERENCE FITS TO PCB UNLESS NOTED.  
 3. REFER TO PRODUCT SPEC PS-71243-9999 FOR PERFORMANCE SPECIFICATIONS.  
 4. PRODUCT IS PACKAGED IN TRAYS PER PK-70873-0609.  
 5. RECOMMENDED MODULE LAYOUT SHALL BE PER SHEET 2.  
 6. RECOMMENDED PLATING ON MODULE PADS: 30 MICROINCH/(0.76 MICROMETER) MINIMUM HARD GOLD (Au) OVER 79 MICROINCH/(2.0 MICROMETER) MINIMUM NICKEL (Ni).  
 7. PRODUCT WILL HAVE DATE CODE STAMPED ON SIDE OF HOUSING.

MATERIALS:  
 HOUSING - GLASS FILLED LIQUID CRYSTAL POLYMER (LCP), UL 94V-0, COLOR: BLACK.  
 TERMINAL - PHOSPHOR BRONZE  
 LATCHES - GLASS FILLED HIGH TEMPERATURE NYLON, UL 94V-0, COLOR: IVORY.  
 PLATING:  
 SEE SHEET 2.



D	ADD -3007 OPTION ECN# UCF2003-0263 DMORGAN 02/08/13
C	ADD LUBED P/N'S ECN# UDT12001-1012 DMORGAN 01/03/28
B	CHG Sn-Pb THICKNESS ECN# UDT1999-0454 DMORGAN 99/08/09
A	REL TO PRODUCTION ECN# UDT1999-0290 99/02/19 BARKER
3	CTR PEG TO FORK & ADD .5003 (NO ECR) 98/10/17 BARKER
2	REVISED PER ECR# U80920 98-4-17 LAURX
1	PROPOSAL RELEASE PER ECR# U80920 97-10-29 LAURX

DIMENSIONS SHOWN (METRIC) INCH		UNLESS OTHERWISE SPECIFIED TOLERANCES: ANGULAR ± 1/2°	
3 PLACE	± .005	INCH	METRIC
2 PLACE	± --- ± 0.13		
1 PLACE	± --- ± 0.25		
DRAFT WHERE APPLICABLE MUST REMAIN WITHIN DIMENSIONS			
DRWG. BY: JCL	CHK'D. BY: JCL	FILE NAME: S7124331 DGN	SCALE: 2:1
MOLEX INCORPORATED LITSE, ILL. 60532 U.S.A.		SHEET NO. 1 OF 2 DATE 97/09/25	
SEE CHART		SDA-71243-3***	
THIS DRAWING CONTAINS INFORMATION THAT IS PROPRIETARY TO MOLEX INC. AND SHOULD NOT BE USED WITHOUT WRITTEN PERMISSION.		DIV. CP	

RECOMMENDED  
P.C. BOARD HOLE PATTERN  
(CONNECTOR SIDE)

13	12	11	10	9	8	7	6	71243		4	3	2	1	
PART NUMBER	DESCRIPTION	VOLTAGE KEY	PEG A	PEG B	PEG C	DIM. "P"	DIM. "S"	DIM. "T"	DIM. "V"	DIM. "W"	DIM. "X"	DIM. "Y"	DIM. "Z"	TERMINAL TYPE
71243-3001	1.8 VOLT VDDQ	CENTER	PLASTIC PEG	METAL FORKLOCK	PLASTIC PEG	.155 (3.94)	.020 (0.51)	.127 (3.23)	.135 (3.43)	.970 (24.64)	.113 (2.87)	.250 (6.35)	.410 (10.41)	NOT LUBRICATED
71243-3002	2.5 VOLT VDDQ	OFFSET LEFT	PLASTIC PEG	METAL FORKLOCK	PLASTIC PEG	.155 (3.94)	.020 (0.51)	.127 (3.23)	.135 (3.43)	.970 (24.64)	.113 (2.87)	.250 (6.35)	.410 (10.41)	NOT LUBRICATED
71243-3004	1.8 VOLT VDDQ	CENTER	PLASTIC PEG	METAL FORKLOCK	PLASTIC PEG	.155 (3.94)	.020 (0.51)	.127 (3.23)	.135 (3.43)	.970 (24.64)	.113 (2.87)	.250 (6.35)	.410 (10.41)	LUBRICATED
71243-3005	2.5 VOLT VDDQ	OFFSET LEFT	PLASTIC PEG	METAL FORKLOCK	PLASTIC PEG	.155 (3.94)	.020 (0.51)	.127 (3.23)	.135 (3.43)	.970 (24.64)	.113 (2.87)	.250 (6.35)	.410 (10.41)	LUBRICATED
71243-3007	2.5 VOLT VDDQ	OFFSET LEFT	PLASTIC PEG	NONE	PLASTIC PEG	.155 (3.94)	.020 (0.51)	.127 (3.23)		.970 (24.64)	.113 (2.87)	.250 (6.35)	.410 (10.41)	NOT LUBRICATED

**NOTES:**

1. STRAIGHTNESS OF MODULE APPLIES TO THE AREA FROM THE BOTTOM OF THE CARD UP .157/(4.00).
2. IF THE TIE BARS ARE ATTACHED TO PADS, THE TIE BAR SHOULD BE ON AN INTERNAL LAYER, SO THAT THE REMNANT CANNOT CAUSE DAMAGE TO THE CONTACTS.

**PLATING:**

CONTACT AREA NOT LUBRICATED:

GOLD (Au) FLASH: THICKNESS=2-10 MICROINCH/(0.05-0.25 MICRO METER),  
OVER PALLADIUM-NICKEL (Pd-Ni); THICKNESS=30 MICROINCH/(0.76 MICROMETER) MINIMUM.

CONTACT AREA LUBRICATED:

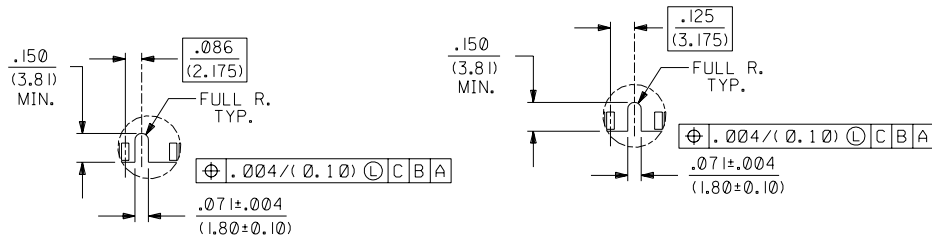
MOLEX EBI LUBRICANT APPLIED OVER GOLD (Au) FLASH:  
THICKNESS=2-10 MICROINCH/(0.05-0.25 MICRO METER),  
OVER PALLADIUM-NICKEL (Pd-Ni); THICKNESS=30 MICROINCH/(0.76 MICROMETER) MINIMUM.

SOLDER TAILS:

TIN-LEAD (Sn-Pb): THICKNESS=150 MICROINCH/(3.81 MICROMETER) MINIMUM.

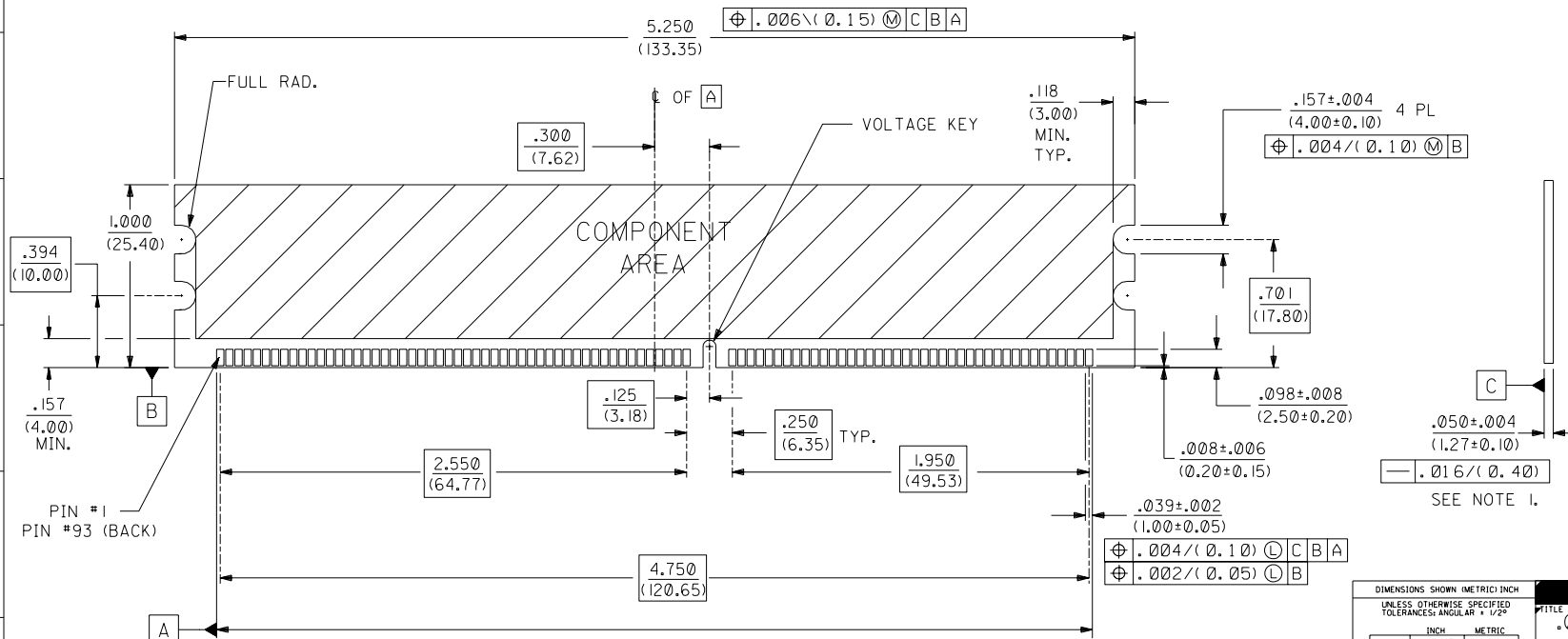
UNDERPLATE:

NICKEL (Ni) OVER ENTIRE TERMINAL.



OFFSET LEFT KEY

CENTERED KEY



RECOMMENDED MODULE LAYOUT  
184 CKT 3.3V SHOWN

D	SEE SHEET I
C	SEE SHEET I
A	SEE SHEET I
3	SEE SHEET I
2	SEE SHEET I
I	SEE SHEET I

DIMENSIONS SHOWN (METRIC INCH)		UNLESS OTHERWISE SPECIFIED TOLERANCES: ANGULAR ± 1/2°		REVISIONS	
INCH		METRIC		MFG. SH. REV. LTR.	
5 PLACE ± .005	---	---		REVISE ONLY ON CAD SYSTEM	
2 PLACE ± .01	± 0.13	---		TITLE	
1 PLACE --- ± 0.25	---	---		.050/(1.27) PITCH SINGLE KEY	
DRAFT WHERE APPLICABLE MUST REMAIN WITHIN DIMENSIONS		MOLEX INCORPORATED		SHEET NO. 2	
DRWG. NO. SDA-71243-3***		DATE 97/09/25		FILE NAME	
DRG. BY JCL		CHK'D. BY JCL		57124332	
APP'D. BY JCL		SCALE 2: 1		DIV. CP	
THIS DRAWING CONTAINS INFORMATION THAT IS PROPRIETARY TO MOLEX INC. AND SHOULD NOT BE USED WITHOUT WRITTEN PERMISSION.		SIZE		CP	