






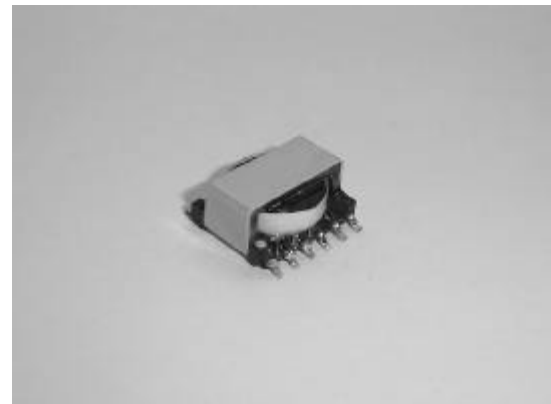


-  Flyback transformers designed for PoE (IEEE802.3af) powered devices with up to 6 Watts
-  Designed for 250kHz switching frequency with input of 36 - 72V
-  Low Leakage Inductance
-  Hipot voltage: 1500Vrms
-  Operating temperature -40°C to +85°C.
-  RoHS compliant version is available
-  Custom design is also available



**ELECTRICAL SPECIFICATION @ 25°C**

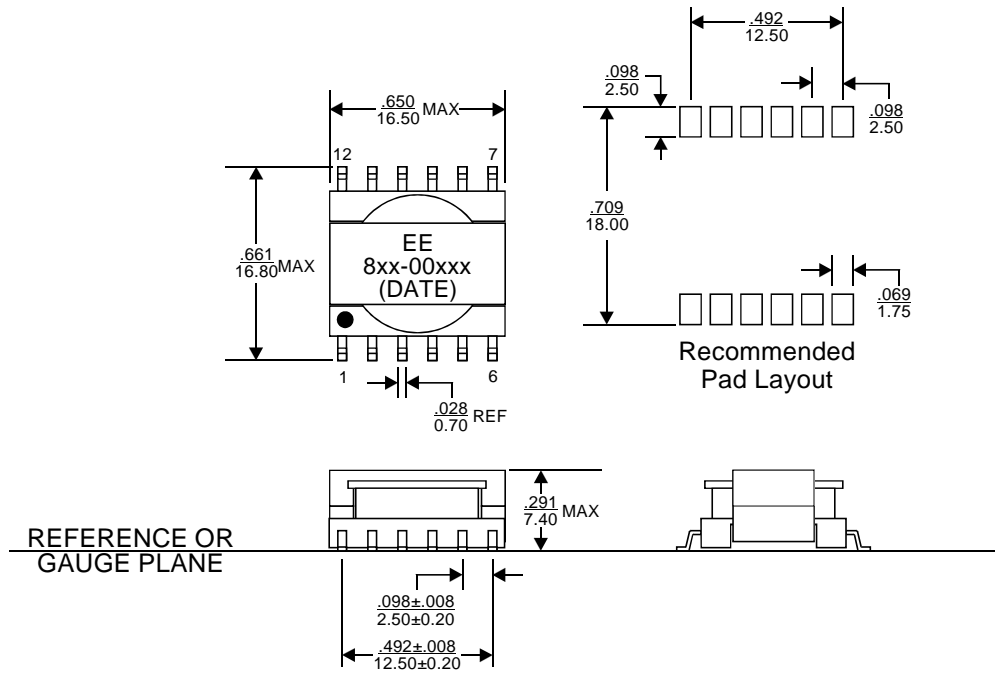
Part Number	RoHS Part Number	Turns Ratio		Inductance at 0A (uH ± 10%)	Inductance at Ipk (uH Min)	Leakage Inductance (nH Max)	DCR (mOhm Max)			Ipk (A)	Secondary Output
		Pri : Sec	Pri : Bias				Pri	Sec	Bias		
<b>Continuous mode</b>											
835-00820	835-00820F	1 : 0.063	1 : 0.344	167	150.3	7.8	303	17	570	0.62	Vout=1.8V,3.3A
835-00821	835-00821F	1 : 0.083	1 : 0.333	177	159.3	7.0	353	27	660	0.60	Vout=2.5V,2.4A
835-00822	835-00822F	1 : 0.100	1 : 0.333	184	165.6	4.0	286	26	515	0.57	Vout=3.3V,1.8A
835-00823	835-00823F	1 : 0.143	1 : 0.343	193	173.7	8.0	344	43	660	0.55	Vout=5.0V,1.2A
835-00824	835-00824F	1 : 0.333	1 : 0.333	204	183.6	5.8	293	83	545	0.52	Vout=12V,0.5A
<b>Discontinuous mode</b>											
835-00825	835-00825F	1 : 0.063	1 : 0.344	75	67.5	6.7	311	18	575	1.0	Vout=1.8V,3.3A
835-00826	835-00826F	1 : 0.083	1 : 0.333	80	72.0	5.0	219	17	388	0.95	Vout=2.5V,2.4A
835-00827	835-00827F	1 : 0.100	1 : 0.333	85	76.5	4.0	285	26	530	0.90	Vout=3.3V,1.8A
835-00828	835-00828F	1 : 0.143	1 : 0.357	90	81.0	3.1	271	33	529	0.85	Vout=5.0V,1.2A
835-00829	835-00829F	1 : 0.333	1 : 0.333	95	85.5	2.4	265	74	484	0.80	Vout=12V,0.5A

**Notes:**

1. Inductance is measured at 250kHz, 0.5Vrms, 0Adc.
2. Peak primary current, Ipk, is drawn at minimum input voltage.
3. DCR for the primary and for the secondary are with the windings connected in parallel.
4. Leakage Inductance is for the primary winding with the secondary winding shorted.
5. Turns ratio are with the primary and secondary windings connected in parallel.
6. Output of the secondary is with the windings connected in parallel. Bias winding output is 12V, 0.2A.
7. Designed to remain in continuous mode operation at power levels of 3 watts and above.
8. Operating temperature range: -40°C to +125°C. The part temperature (ambient temperature + temperature rise) should not exceed the upper limit of the operating temperature under worst case operating conditions. Circuit design, component placement, PWB trace size and thickness, airflow and other cooling provisions all affect the part temperature. Part temperature should be verified in the end application.



**MECHANICAL DIMENSIONS**

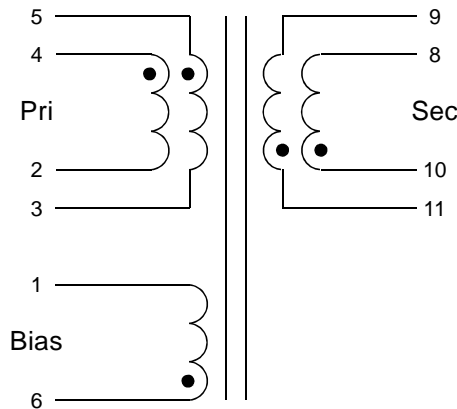


**Notes:**

- 9. All dimensions are specified in  $\frac{\text{inches}}{\text{mm}}$  with higher precedence in inches.
- 10. Unless otherwise specified, all tolerances are  $\pm \frac{.010}{0.25}$ .
- 11. Coplanarity:  $\frac{.004}{0.10}$  max.

Weight (in gram)	: 2.9 typ.
Tape & Reel	: 300 / reel

**SCHEMATICS**



**FOR MORE INFORMATION, PLEASE CONTACT**

HEADQUARTER  
2/F Block A, Merit Industrial Centre,  
94 Tokwawan Road, Kowloon,  
Hong Kong  
Tel: (852) 2765 3888  
Fax: (852) 2954 3304  
Email: eempl@eleceltek.com

Website: <http://www.eleceltek.com>

Information herein is for reference only and subject to change without notice. It does not constitute any representation, warranty or commitment of the company in respect of the products in any aspect. All logos, brands and product names mentioned herein are trademarks or registered trademarks of their respective owners. The company does not assume any liability arising out of the application or use of any product or circuit described herein. Copyrights 2006, E & E Magnetic Products Limited.