

PRODUCT NUMBER
20020010-XXXXXXLF

20020010-□ □ □ □ 0 □ L F

PITCH
C: 3.50 mm
D: 3.81 mm
G: 5.00 mm
H: 5.08 mm

POLES
02: 2 POLES
03: 3 POLES
04: 4 POLES
24: 24 POLES

LF : NOTED RoHS COMPATIBLE

1 : STANDARD PRODUCT
W/ BOX PACKING

PROPERTY TABLE						
FCI SERIES NAME		02-350	02-381	02-500	02-508	
PITCH (mm)		3.50	3.81	5.00	5.08	
VOLTAGE RATING (VAC)		300	300	300	300	
CURRENT RATING (A)	cULus	8	8	12	12	
	VDE	10	10	NA	NA	
APPLICABLE WIRE RANGE (AWG)	1-WIRE	16~28	16~28	12~24	12~24	
	2-WIRE	20	20	18	18	
WIRE CROSS SECTION (mm ²)	SOLID	1-WIRE	1.5	1.5	2.5	2.5
		2-WIRE	0.5	0.5	1.0	1.0
	STRANDED	1-WIRE	1.5	1.5	2.5	2.5
		2-WIRE	0.75	0.75	1.5	1.5
OPENING CONTACT HOUSING(mm ²)		2.8x1.7	2.8x1.7	2.6x3.3	2.6x3.3	
WIRE STRIP LENGTH(mm)		6~7	6~7	6~7	6~7	
TORQUE +/-10% (N-m/Lb-in)		0.19/1.7	0.19/1.7	0.4/3.5	0.4/3.5	
SCREW		M2x0.4	M2x0.4	M3x0.5	M3x0.5	
WITHSTANDING VOLTAGE (kV)	cULus	1.6	1.6	1.6	1.6	
	VDE	2.5	2.5	NA	NA	
OPERATING TEMP. (°C)		-40~+115	-40~+115	-40~+115	-40~+115	
POLES AVAILABLE		02~24	02~24	02~24	02~24	
SAFETY CERTIFICATE						

SCREW CODE

CODE	SCREW TYPE	AVAILABILITY
A	-/+	ON REQUEST ONLY
B	-	STANDARD

HOUSING CODE

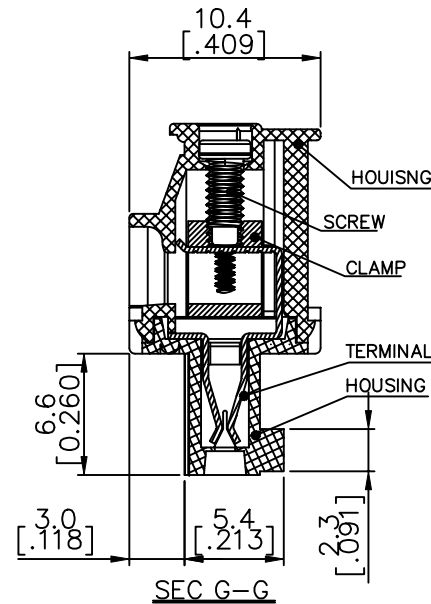
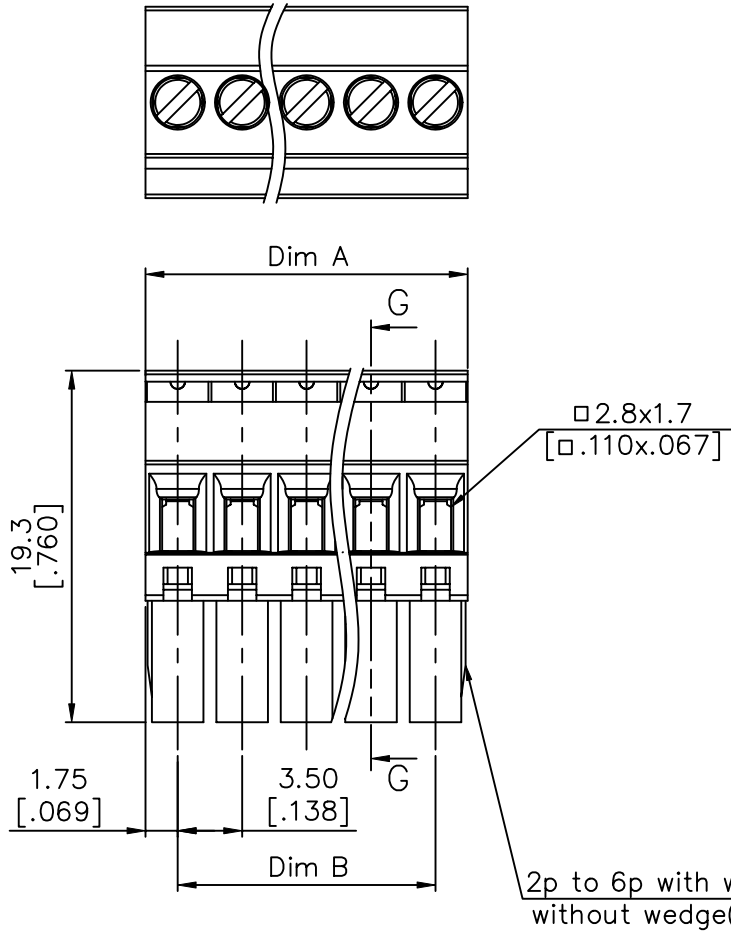
CODE	COLOR	AVAILABILITY
1	GREEN(RAL 6018/T)	STANDARD
2	BLACK	ON REQUEST ONLY
3	GREY(RAL 7004/P)	ON REQUEST ONLY
4	BLUE(RAL 5015/A)	ON REQUEST ONLY

NOTES:

- MATERIALS
 - 1-1 HOUSING: THERMALPLASTIC RESIN, UL 94V-0 RATED.
 - 1-2 SCREW: STEEL, ZINC PLATED.
 - 1-3 CLAMP: COPPER ALLOY, NICKEL PLATED.
 - 1-4 TERMINAL: COPPER ALLOY, TIN PLATED.
- PRODUCT SPECIFICATION REFER TO FCI GS-12-625.
- PRODUCT PACKING SPECIFICATION REFER TO FCI GS-14-1394.
- FCI, SAFETY CERTIFICATE LOGO AND SERIES NAME TO BE SHOWN ON PRODUCT SURFACE.
- THE PRODUCTS WHERE THE PART NUMBER END IN "LF" MEET THE EUROPEAN UNION DIRECTIVE AND OTHER COUNTRY REGULATIONS AS DESCRIBED IN GS-22-008.

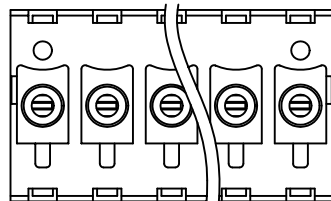
mat'l. code				surface ASME Y14.5	tolerance ASME Y14.5	projection	product family
tolerances unless otherwise specified							TERMINAL BLOCK
ltr	ecn no	dr	date	angles	X.±0.5	MM	title
A	T10-0029	JH	120909	 X.X±0.3	 X.XX±0.1	 [INCH]	TERMINAL BLOCK
B	T10-0042	WL	030310				PLUGGABLE PLUG, BACK SIDE HOOK
C	T10-0082	WL	080510	scale			dwg no
D	T10-0158	WL	100410	dr	JASON HSU	120909	sheet 1 of 5 size
E	T11-0013	WL	040811	enr	JASON HSU	120909	20020010
				chr	GARY HSIEH	120909	A4
				appd	JOSEPH HSIA	120909	type
							CUSTOMER Drawing
sheet index	revision sheet	E	E	E	E	E	
		1	2	3	4	5	

PRODUCT NUMBER	SERIES NAME	PITCH
20020010-CXXXXXXLF	02-350	3.50 mm



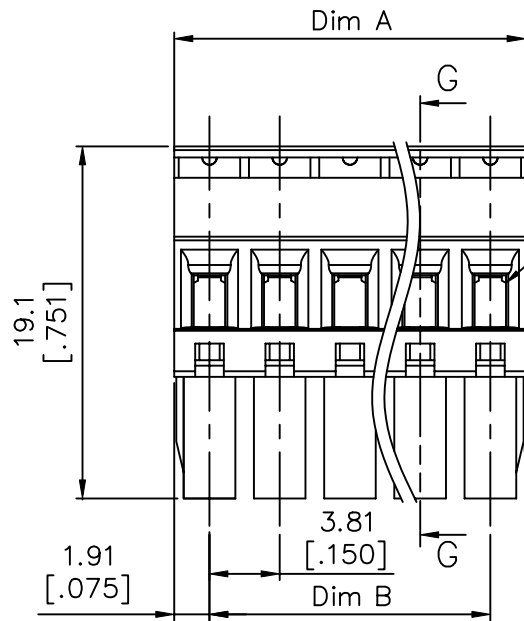
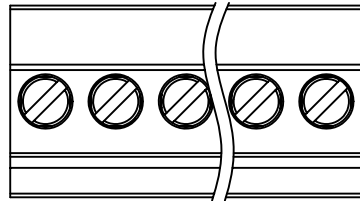
N = Number of poles
 Dim A = $N \times 3.5$ [.138]
 Dim B = $(N-1) \times 3.5$ [.138]

POLES	Dim A	Dim B
2-6p	±0.15 [.006]	
7-12p	±0.20 [.008]	
13-18p	±0.25 [.010]	
19-24p	±0.30 [.012]	



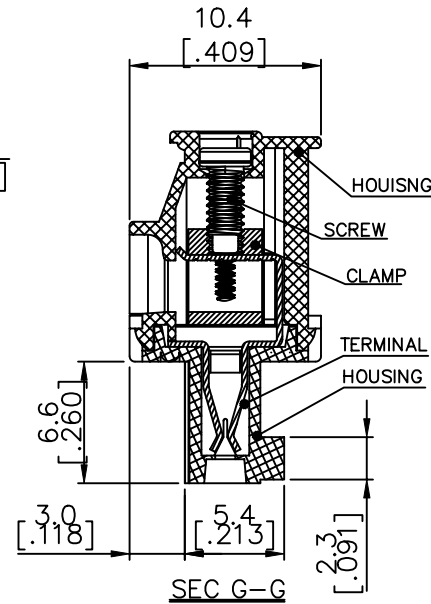
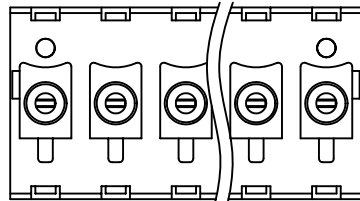
mat'l. code	surface ASME Y14.5	tolerance ASME Y14.5	projection MM [INCH]	product family TERMINAL BLOCK	
ltr	ecn	no	dr	date	title
E					TERMINAL BLOCK PLUGGABLE PLUG, BACK SIDE HOOK
	angles X°±1'	flat X.X±0.3	scale		dwg no 20020010
					sheet 2 of 5 size A4
	dr	JASON HSU	120909		type CUSTOMER Drawing
	enr	JASON HSU	120909		
	chr	GARY HSIEH	120909		
	appd	JOSEPH HSIA	120909		
sheet index	revision sheet				

PRODUCT NUMBER	SERIES NAME	PITCH
20020010-DXXXXXXLF	02-381	3.81 mm



□2.8x1.7
[□.110x.067]

2p to 6p with wedge, above 7p
without wedge (including 7p)

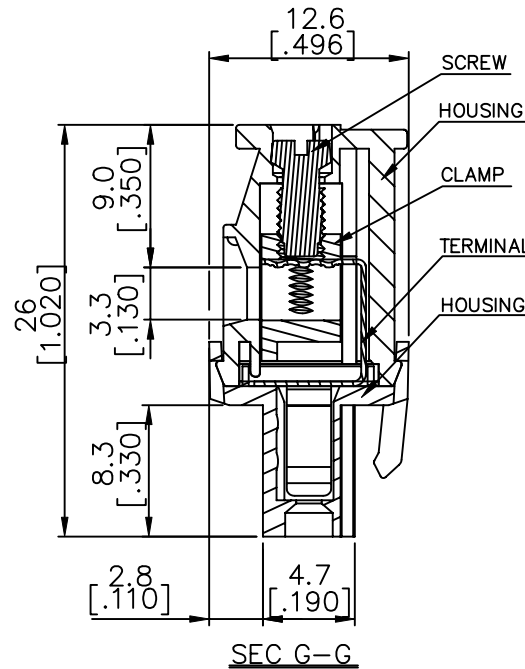
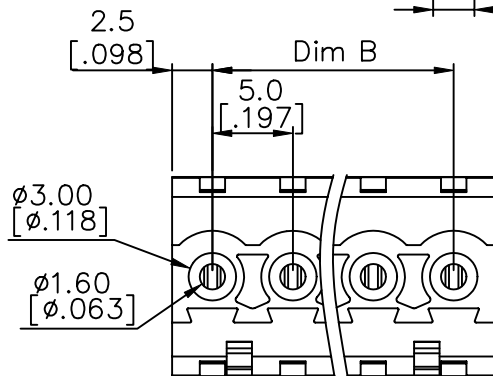
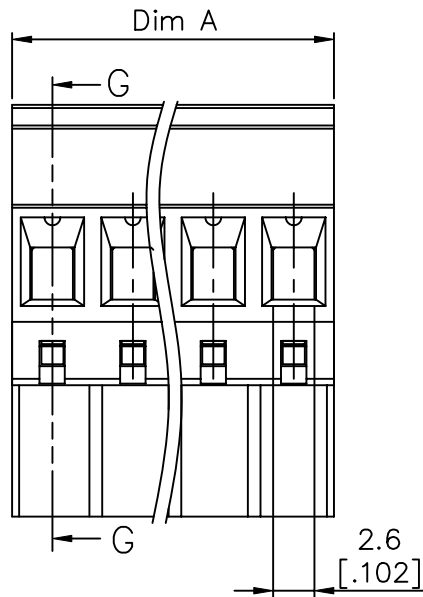
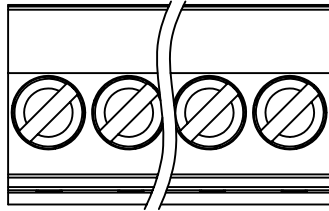


N = Number of poles
Dim A = N x 3.81 [.150]
Dim B = (N - 1) x 3.81 [.150]

POLES	Dim A	Dim B
2-6p	±0.15 [.006]	
7-12p	±0.20 [.008]	
13-18p	±0.25 [.010]	
19-24p	±0.30 [.012]	

mat'l. code		surface ASME Y14.5 ✓	tolerance ASME Y14.5	projection MM [INCH]	product family TERMINAL BLOCK
ltr	ecn no	dr	date	tolerances unless otherwise specified	title
E				angles X ± 0.5 X.X ± 0.3 X° ± 1'	TERMINAL BLOCK PLUGGABLE PLUG, BACK SIDE HOOK
		dr	JASON HSU 120909	scale	dwg no 20020010 sheet 3 of 5 size A4
		enr	JASON HSU 120909		type CUSTOMER Drawing
		chr	GARY HSIEH 120909		
		appd	JOSEPH HSIA 120909		
sheet index	revision sheet				

PRODUCT NUMBER	SERIES NAME	PITCH
20020010-GXXXXXL	02-500	5.00 mm

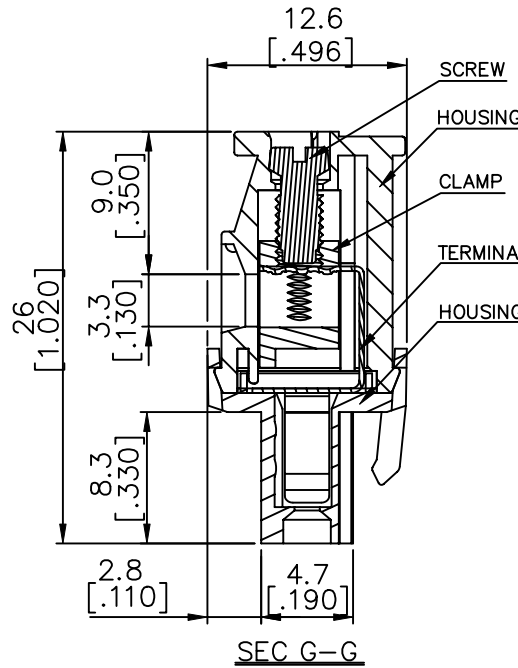
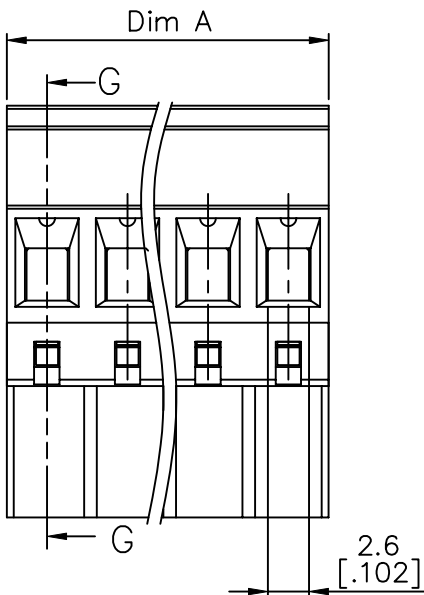
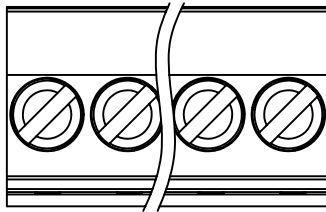


N = Number of poles
 Dim A = N x 5.0 [.197]
 Dim B = (N - 1) x 5.0 [.197]

POLES	Dim A	Dim B
2-6p	±0.15 [.006]	
7-12p	±0.25 [.010]	
13-18p	±0.30 [.012]	
19-24p	±0.40 [.016]	

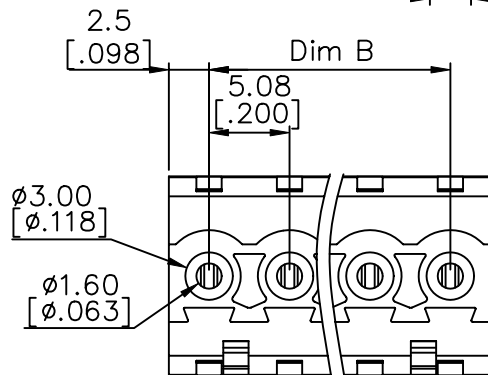
mat'l. code		surface ASME Y14.5 ✓	tolerance ASME Y14.5	projection MM [INCH]	product family TERMINAL BLOCK
ltr	ecn no	dr	date	title TERMINAL BLOCK PLUGGABLE PLUG, BACK SIDE HOOK	
E				scale	dwg no 20020010
					sheet 4 of 5 size A4
		dr	JASON HSU 120909		type CUSTOMER Drawing
		enr	JASON HSU 120909		
		chr	GARY HSIEH 120909		
		appd	JOSEPH HSIA 120909		
sheet index	revision sheet				

PRODUCT NUMBER	SERIES NAME	PITCH
20020010-HXXXXXXLF	02-508	5.08 mm



N = Number of poles
 Dim A = N x 5.08 [.200]
 Dim B = (N - 1) x 5.08 [.200]

POLES	Dim A	Dim B
2-6p	±0.15 [.006]	
7-12p	±0.25 [.010]	
13-18p	±0.30 [.012]	
19-24p	±0.40 [.016]	



mat'l. code		surface ASME Y14.5 ✓	tolerance ASME Y14.5	projection [Symbol]	product family TERMINAL BLOCK
ltr	ecn no	dr	date	title TERMINAL BLOCK PLUGGABLE PLUG, BACK SIDE HOOK	
E				angles X ± 1°	scale MM [INCH]
				tolerances unless otherwise specified	dwg no 20020010
		dr	JASON HSU 120909		sheet 5 of 5 size A4
		enr	JASON HSU 120909		type CUSTOMER Drawing
		chr	GARY HSIEH 120909		
		appd	JOSEPH HSIA 120909		
sheet index	revision sheet				