

60VA & 75VA Quick Connect Transformers

4000 Series - Class II U.L. 1585

Non-Inherently Energy Limited (Secondary fusing required)

- **Type "BB" Same Side Termination** - features quick connect terminals with line and load terminations on the same side of the transformer.
- **Type "AE" Laydown Termination** - features quick connect terminals with line and load terminations on the top of the transformer.
- For Agency Approval, 60VA & 75VA transformers must have one of the following overcurrent protectors in series with the secondary winding:
 - Internally Fused
 - Integral Circuit Breaker
 - Customer Supplied - must be approved by factory. Part number series becomes "4001".

PART NUMBER	VA RATING	PRIMARY VOLTS	SEC. VOLTS	FREQUENCY HERTZ	"A" DIM.	"B" DIM.	"C" DIM.	"D" DIM.	"E" DIM.	BOX QUANTITY	APPROX. WEIGHT
4000-01L15BB*	60	120	24	50/60	3.562"	3.00"	2.50"	2.475" (1)	1.00"	10	2.20 lbs 1.00 kg
-02L15BB*	60	240	24								
-03L15BB*	60	277	24								
-04L15BB*	60	480	24								
-05L15BB*	60	120/208/240	24								
-09L15BB*	60	208/240	24								
4000-01J15AE999**	75	120	24	50/60	3.562"	3.00"	2.50"	2.475" (1)	1.00"	10	2.40 lbs 1.09 kgs
-01J15BB*	75	120	24								
-02J15BB*	75	240	24								
-03J15BB*	75	277	24								
-04J15BB*	75	480	24								
-05J15BB*	75	120/208/240	24								
-09J15AE999**	75	208/240	24								
-09J15BB*	75	208/240	24								
-13J15BB*	75	208/240/480	24								
-51J15BB*	75	380/415	24								
-78J15BB*	75	575	24								

To specify Laydown Termination, change "BB" in part number to "AE".

AGENCY APPROVALS: U.L./C.U.L. File E87824

*A three digit customer ID suffix will be assigned by the factory.

Guide No. XOKV2

Consult factory for availability of other voltage combinations.

C.S.A. File LR56266

Standard male quick connect terminals are .250 x .032.

Insulation System = 130°C Class B

Other quick connect sizes available .187 x .032 & .187 x .020.

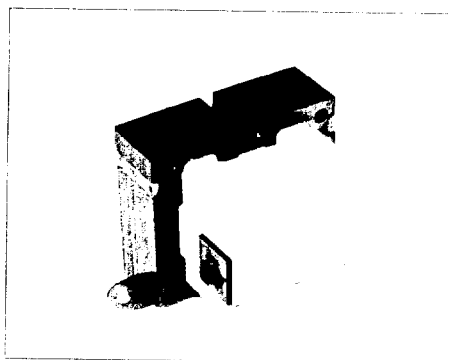
All "999" 75VA models come standard with an integral circuit breaker.

** Part numbers with the "999" suffix are in stock and available for immediate shipment.

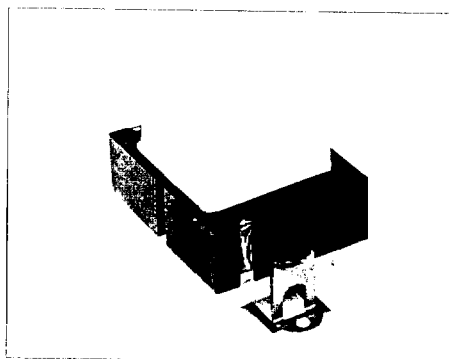


60VA & 75VA Quick Connect Transformers

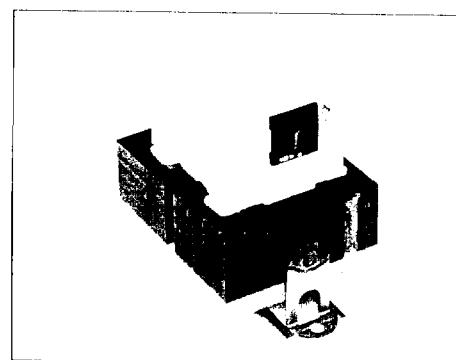
4000 Series - Class II U.L. 1585



4000-09J15BB*

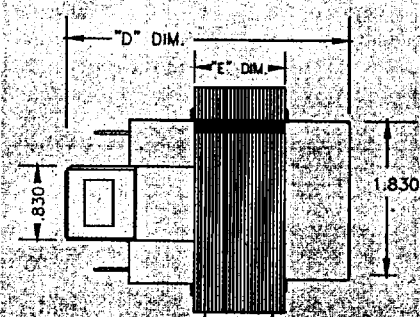
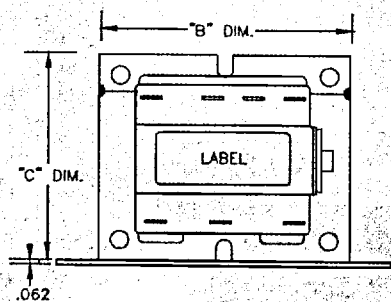
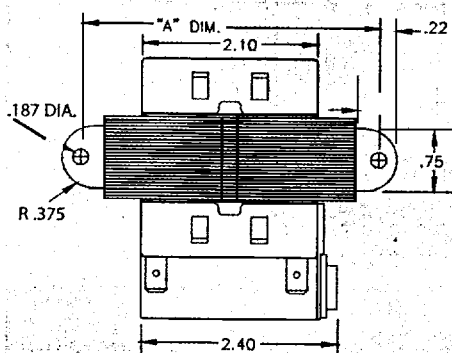


4000-01L15AE*

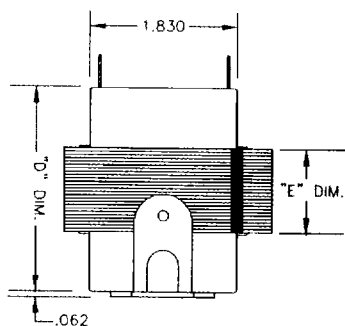
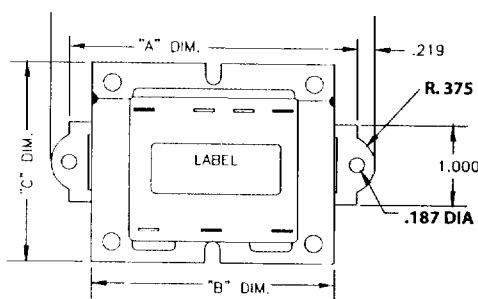
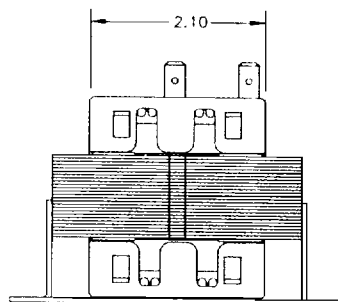


4000-09J15AE*

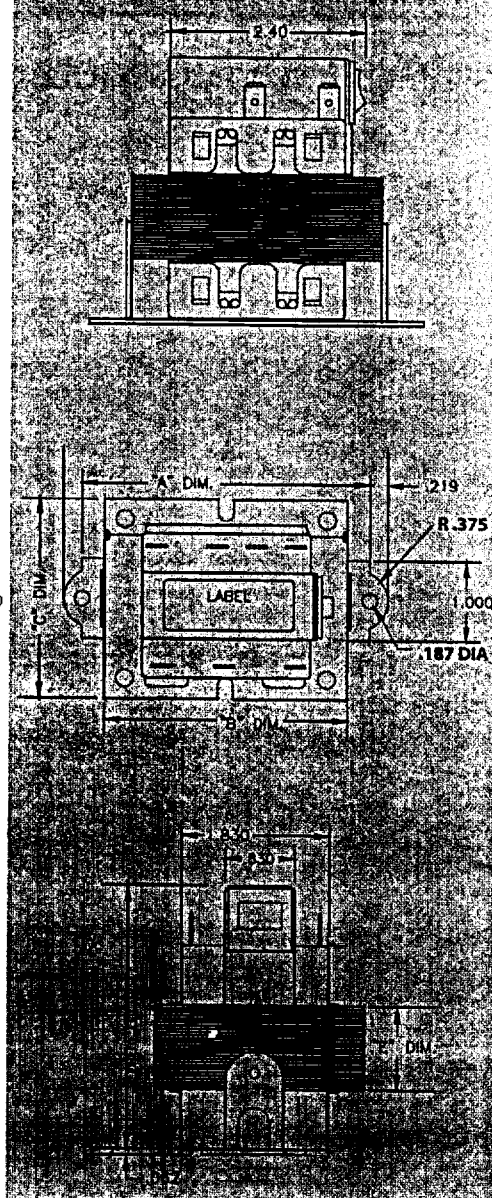
Type "BB" Same Side Termination



Type "AE" Laydown Termination Fused Version



Type "AE" Laydown Termination Circuit Breaker Version



Dimensions shown are in inches and apply to transformers listed on page 34.



Products Unlimited Corp.
Sales & Technical Support
815-626-0300