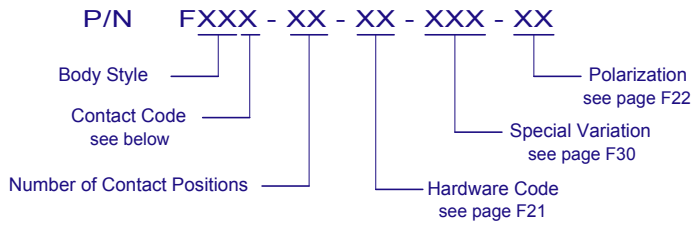
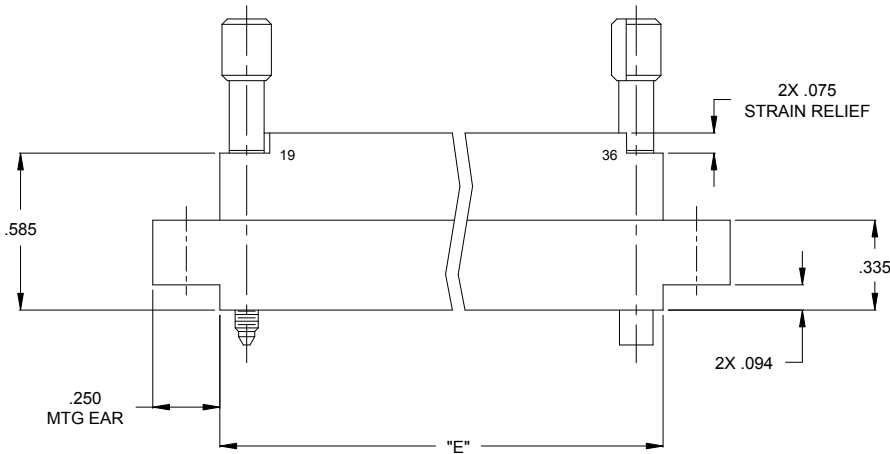
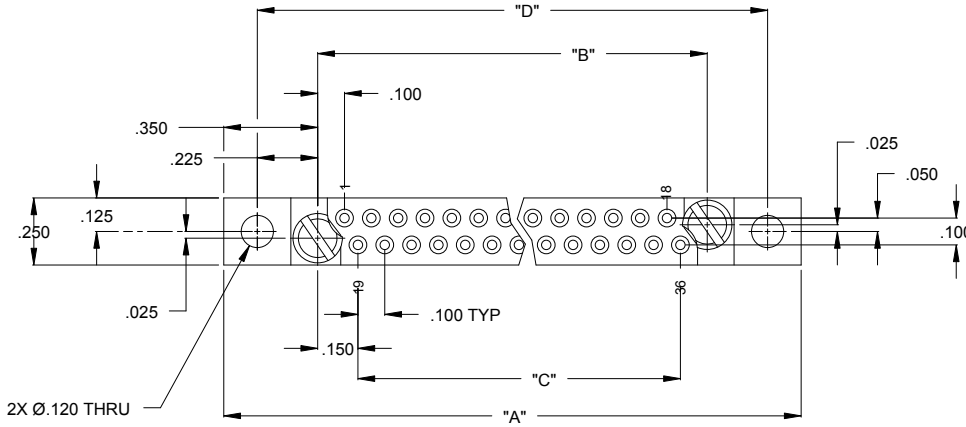


# .100 SERIES 2 ROW PLUG / RECEPTACLE

## CRIMP REMOVABLE, #22 AWG

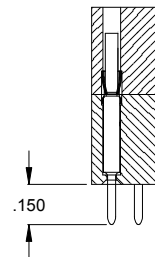


Dimensions					
No. of Cnt's	"A"	"B"	"C"	"D"	"E"
10	1.350	.650	.400	1.100	.850
14	1.550	.850	.600	1.300	1.050
20	1.850	1.150	.900	1.600	1.350
24	2.050	1.350	1.100	1.800	1.550
26	2.150	1.450	1.200	1.900	1.650
30	2.350	1.650	1.400	2.100	1.850
36	2.650	1.950	1.700	2.400	2.150
40	2.850	2.150	1.900	2.600	2.350
44	3.050	2.350	2.100	2.800	2.550
50	3.350	2.650	2.400	3.100	2.850
54	3.550	2.850	2.600	3.300	3.050
56	3.650	2.950	2.700	3.400	3.150
60	3.850	3.150	2.900	3.600	3.350
66	4.150	3.450	3.200	3.900	3.650
70	4.350	3.650	3.400	4.100	3.850

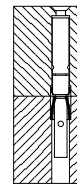


### CONTACT CODES:

P  
PIN CONTACT



S  
SOCKET CONTACT  
M55302 / 65-02



### MATING CONNECTORS:

FBR, FDR, FGR PLUG

FBR, FDR, FTW RECEPTACLE  
 FTY, FTD, FTB

- FKE - AS SHOWN WITH STRAIN RELIEF & WITH MTG EARS
- FKA - WITH STRAIN RELIEF & WITHOUT MTG EARS
- \*NEW\* FKV - WITHOUT STRAIN RELIEF & WITH MTG EARS
- \*NEW\* FKZ - WITHOUT STRAIN RELIEF & WITHOUT MTG EARS
- FKH - AS SHOWN WITH STRAIN RELIEF & WITH MTG EARS (RECESSED HARDWARE)
- FKF - WITH STRAIN RELIEF & WITHOUT MTG EARS (RECESSED HARDWARE)
- \*NEW\* FKJ - WITHOUT STRAIN RELIEF & WITH MTG EARS (RECESSED HARDWARE)
- \*NEW\* FKR - WITHOUT STRAIN RELIEF & WITHOUT MTG EARS (RECESSED HARDWARE)