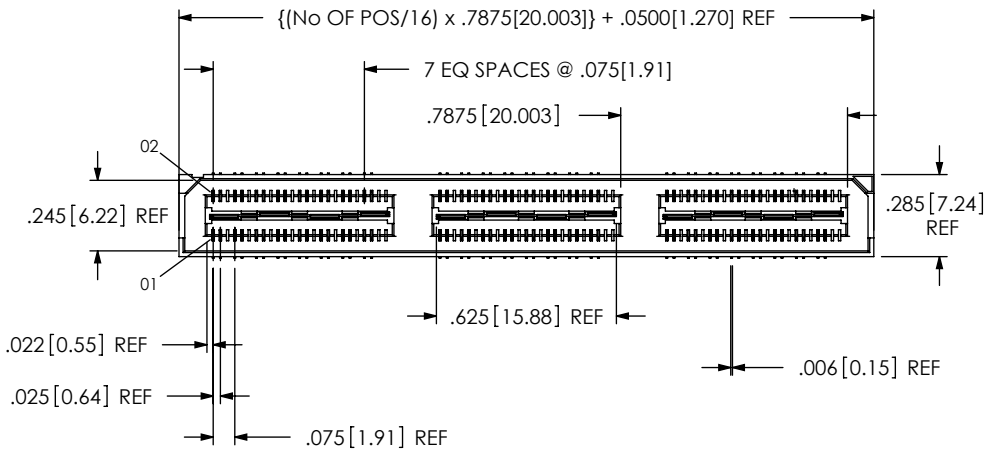


DO NOT SCALE FROM THIS PRINT



- No OF POSITIONS
 -016, -032, -048,
 .064.080
 (PER ROW)
 * SEE NOTES 10 & 11
- LEAD STYLE
 -01: .1430[3.632]
- PLATING SPECIFICATION
 -F: FLASH SELECTIVE GOLD WITH MATTE TIN TAILS (USE C-126-21-F & T-1G2-01-F) (SEE NOTES 7 & 9)
 -L: LIGHT SELECTIVE GOLD WITH MATTE TIN TAILS (USE C-126-21-L & T-1G2-01-L) (SEE NOTE 9)
 -H: HEAVY GOLD (USE C-126-21-H & T-1G2-01-G) (SEE NOTE 9)
 -STL: LIGHT SELECTIVE GOLD WITH TIN LEAD TAILS (USE C-126-21-STL & T-1G2-01-STL) (SEE NOTE 9)
 -FTL: FLASH SELECTIVE GOLD WITH TIN LEAD TAILS (USE C-126-21-FTL & T-1G2-01-FTL) (SEE NOTE 9)

- OPTION
 -A: ALIGNMENT PINS (SEE FIG. 2, SHEET 2) (USE QSS-25-01-D-XX-A)
 -LC: LOCKING CLIPS (SEE FIG. 1) (USE LC-08-TM-01) (SEE NOTE 12)
 -K: POLYIMIDE FILM PAD (SEE FIG. 3, SHEET 2) (USE K-850-650)
 -TR: TAPE & REEL (48 POS MAX) (32 POS MAX FOR -GP OPTION)
 -GP: GUIDE POSTS (SEE FIG. 4, SHEET 2) (USE QSS-25-01-D-XX-X-GP)
 -LS2: LOCKING SCREW (USE QSS-25-01-D-XX-LS2) (SEE FIG. 5, SHEET 3) (FOR MATING WITH QTS-...-RA..LS2)
- DIFFERENTIAL PAIRS

- ROW SPECIFICATION
 -D: DOUBLE (USE QSS-25-01-D-XX) (SEE TABLE 2)

☒ = NOT ENGINEERING APPROVED

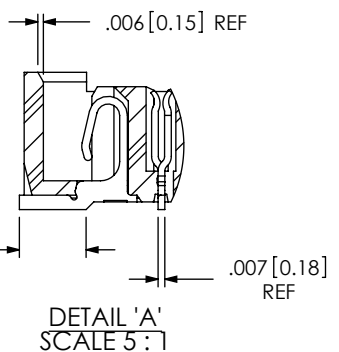
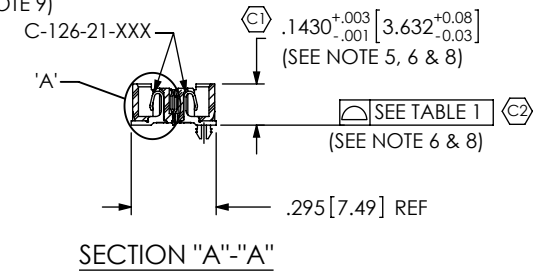
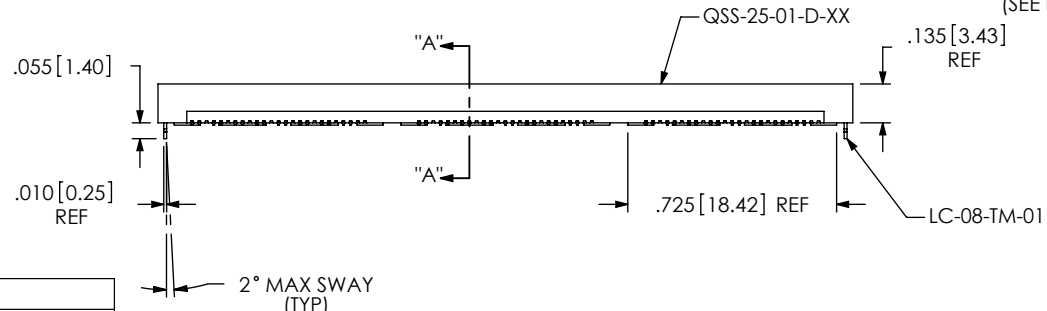


TABLE 2

POSITIONS	USE BODY
-016	QSS-25-01-D-01
-032	QSS-25-01-D-02
-048	QSS-25-01-D-03
-064	QSS-25-01-D-04
-080	QSS-25-01-D-05

NOTES:

- CONTACT RETENTION: 5 OZ MIN
- GROUND PLANE RETENTION: 8 OZ MIN
- © REPRESENTS A CRITICAL DIMENSION.
- PARTS ARE MOLD TO POSITION.
- MAX VARIANCE OF .002[.05].
- DIMENSION APPLIES TO CONTACTS AND GROUND PLANES, INDEPENDENT OF EACH OTHER.
- L PLATING CAN BE SUBSTITUTED FOR -F PLATING.
- GROUND PLANE PRESS HEIGHT MUST BE .003[.08] LESS THAN THE MAXIMUM HEIGHT OR .001[.03] GREATER THAN THE MINIMUM HEIGHT OF THE SIGNAL PIN.
- MAY SUBSTITUTE C-126-01-XXX FOR C-126-21-XXX.
- FOR NEW APPLICATIONS REQUIRING THESE POSITIONS, PLEASE CONTACT SAMTEC INTERCONNECT PROCESSING GROUP.
- FOR -064 AND -080 POSITIONS USE C-269-11-XXX. DO NOT SUB C-126-01-XXX
- DUE TO THE HIGH AMOUNT OF INSERTION FORCE NEEDED, THE -LC OPTION IS NOT COMPATIBLE WITH AUTO PLACEMENT. SAMTEC RECOMMENDS MANUAL PLACEMENT FOR ALL ASSEMBLIES WITH THE -LC OPTION.

FIG. 1
 -LC: LOCKING CLIP OPTION SHOWN

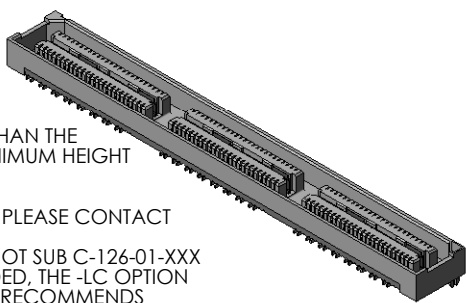


TABLE 1

No OF POSITIONS	COPLANARITY (INCLUDES GND PLANE)
-016 THRU -032	.004[.10]
-048 THRU -080	.006[.15]

UNLESS OTHERWISE SPECIFIED, DIMENSIONS ARE IN INCHES.
 TOLERANCES ARE:
 DECIMALS ANGLES
 .XX: ±.01[.3] 2°
 .XXX: ±.005[.13]
 .XXXX: ±.0020[.05]

PROPRIETARY NOTE
 THIS DOCUMENT CONTAINS INFORMATION CONFIDENTIAL AND PROPRIETARY TO SAMTEC, INC. AND SHALL NOT BE REPRODUCED OR TRANSFERRED TO OTHER DOCUMENTS OR DISCLOSED TO OTHERS OR USED FOR ANY PURPOSE OTHER THAN THAT WHICH IT WAS OBTAINED WITHOUT THE EXPRESSED WRITTEN CONSENT OF SAMTEC, INC.

MATERIAL: DO NOT SCALE DRAWING SHEET SCALE: 1.5:1
 INSULATOR: LCP, COLOR: BLACK
 CONTACT: PHOS BRONZE
 GROUND PLANE: PHOS BRONZE

F:\DWG\MISC\MKTG\QSS-XXX-XX-XXX-D-DP-XXX-MKT.SLDDRW

samtec

520 PARK EAST BLVD, NEW ALBANY, IN 47150
 PHONE: 812-944-6733 FAX: 812-948-5047
 e-Mail: info@SAMTEC.com code 55322

DESCRIPTION:
 .635mm DIFFERENTIAL PAIRS HS SOCKET ASSEMBLY

DWG. NO.
QSS-XXX-XX-XXX-D-DP-XXX

BY: KEVIN B 07/10/2000 SHEET 1 OF 3

FIG. 2
-A: ALIGNMENT PIN OPTION SHOWN

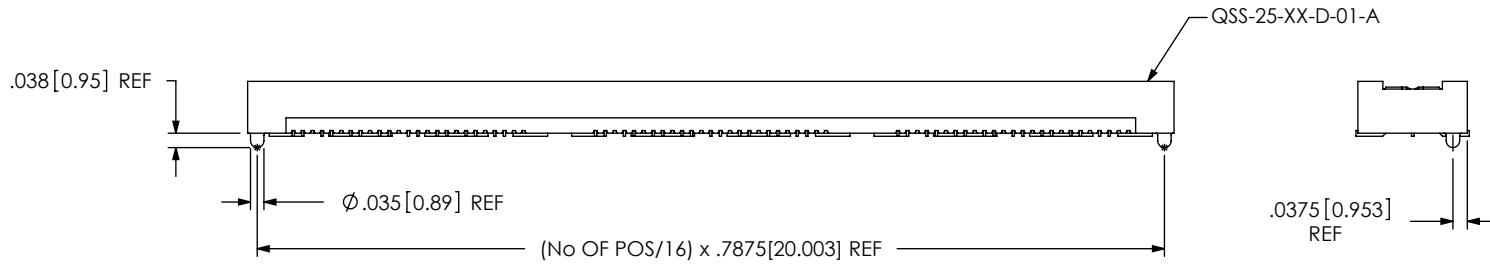
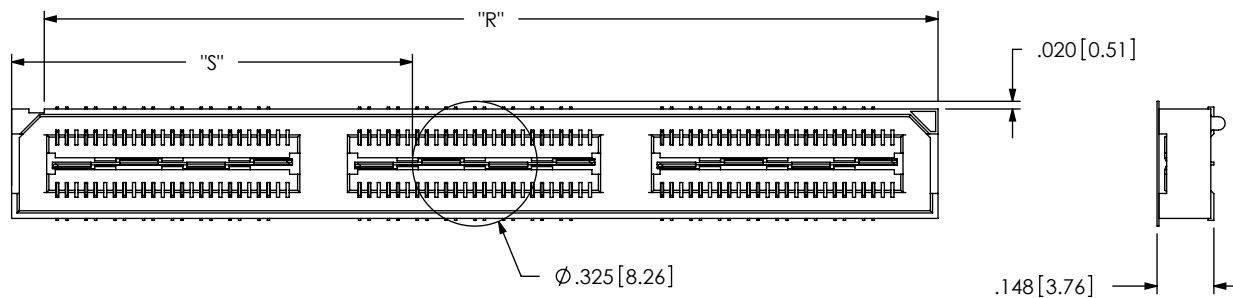


FIG. 3
-K: POLYIMIDE FILM PAD OPTION



NOTE: "R" = ((No OF POS/16) x .7875[20.003]) + .050[1.27] REF
 "S" = (("R" - .325[8.26]) / 2) ±.020[.51]

FIG. 4
-GP: GUIDE POST OPTION
(32 POS MAX FOR TAPE & REEL OFFERING)

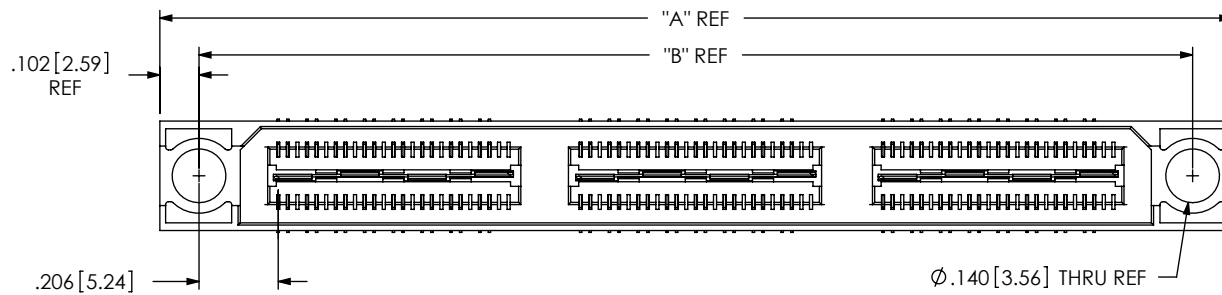
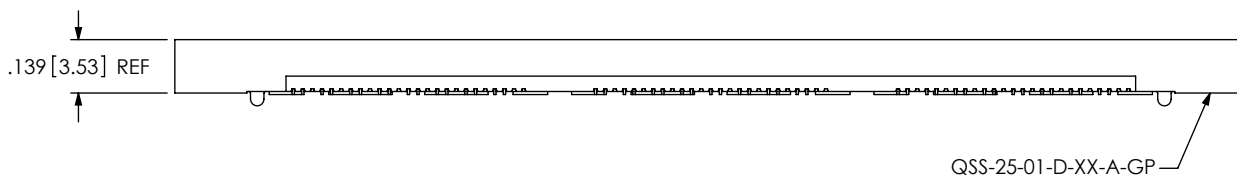


TABLE 3		
POSITIONS	"A" REF	"B" REF
-016	1.2165[30.899]	1.0125[25.718]
-032	2.0040[50.902]	1.8000[45.720]
-048	2.7915[70.904]	2.5875[65.723]
-064	3.5790[90.907]	3.3750[85.725]
-080	4.3665[110.909]	4.1625[105.728]



PROPRIETARY NOTE
 THIS DOCUMENT CONTAINS INFORMATION
 CONFIDENTIAL AND PROPRIETARY TO
 SAMTEC, INC. AND SHALL NOT BE REPRODUCED
 OR TRANSFERRED TO OTHER DOCUMENTS OR
 DISCLOSED TO OTHERS OR USED FOR ANY
 PURPOSE OTHER THAN THAT WHICH IT WAS
 OBTAINED WITHOUT THE EXPRESSED WRITTEN
 CONSENT OF SAMTEC, INC.

DO NOT SCALE DRAWING

SHEET SCALE: 2:1

samtec

520 PARK EAST BLVD, NEW ALBANY, IN 47150
 PHONE: 812-944-6733 FAX: 812-948-5047
 e-Mail: info@SAMTEC.com code 55322

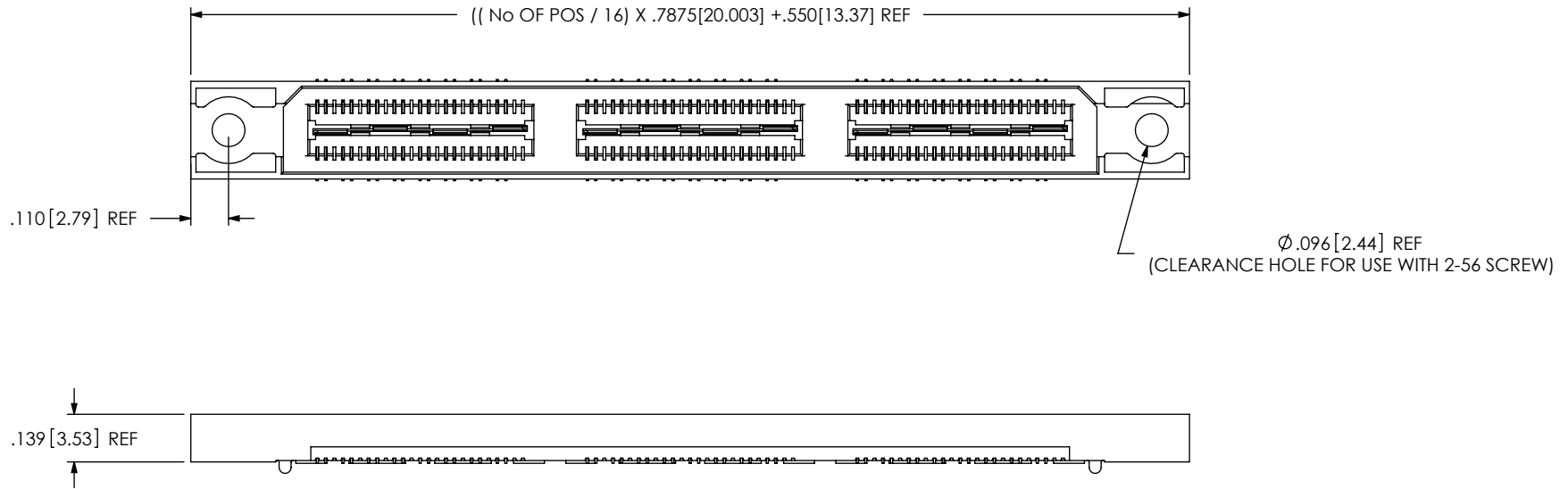
DESCRIPTION:
 .635mm DIFFERENTIAL PAIRS HS SOCKET ASSEMBLY

DWG. NO.
QSS-XXX-XX-XXX-D-DP-XXX

BY: KEVIN B 07/10/2000 SHEET 2 OF 3

FIG. 5

-LS2: LOCKING SCREW OPTION
 [DIFFERENT AS SHOWN, OTHERWISE SAME AS FIG. 1]



PROPRIETARY NOTE

THIS DOCUMENT CONTAINS INFORMATION CONFIDENTIAL AND PROPRIETARY TO SAMTEC, INC. AND SHALL NOT BE REPRODUCED OR TRANSFERRED TO OTHER DOCUMENTS OR DISCLOSED TO OTHERS OR USED FOR ANY PURPOSE OTHER THAN THAT WHICH IT WAS OBTAINED WITHOUT THE EXPRESSED WRITTEN CONSENT OF SAMTEC, INC.

DO NOT SCALE DRAWING

SHEET SCALE: 2:1

samtec

520 PARK EAST BLVD, NEW ALBANY, IN 47150
 PHONE: 812-944-6733 FAX: 812-948-5047
 e-Mail: info@SAMTEC.com code 55322

DESCRIPTION:
 .635mm DIFFERENTIAL PAIRS HS SOCKET ASSEMBLY

DWG. NO.
QSS-XXX-XX-XXX-D-DP-XXX

BY: KEVIN B 07/10/2000 SHEET 3 OF 3