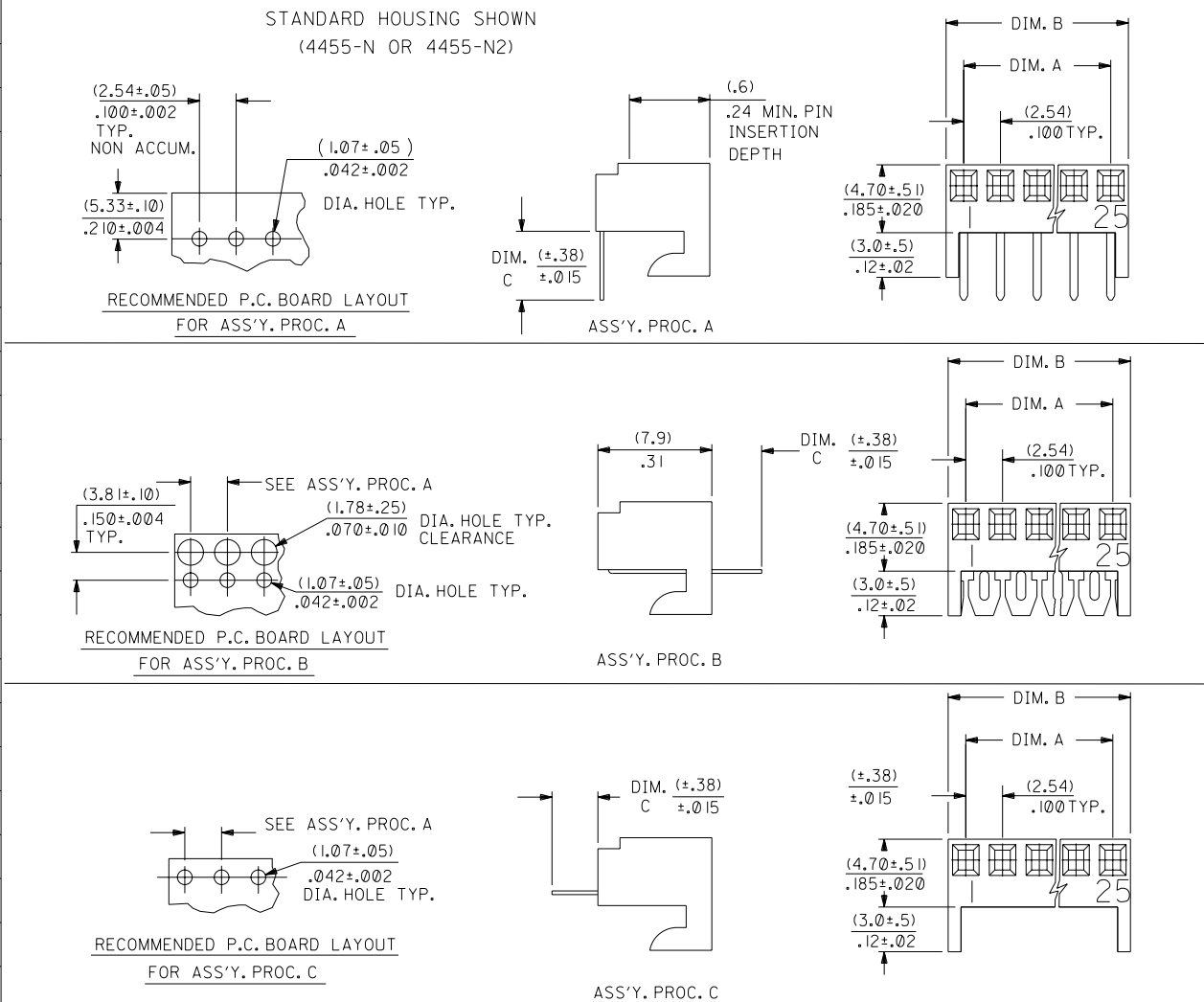


NO. OF CKTS.	DIM. A	DIM. B
1		(2.44± .15) .096± .006
2	(2.54± .10) .100± .004	(4.98± .15) .196± .006
3	(5.08± .10) .200± .004	(7.52± .15) .296± .006
4	(7.62± .10) .300± .004	(10.06± .15) .396± .006
5	(10.16± .13) .400± .005	(12.60± .18) .496± .007
6	(12.70± .13) .500± .005	(15.14± .18) .596± .007
7	(15.24± .15) .600± .006	(17.68± .20) .696± .008
8	(17.78± .15) .700± .006	(20.22± .20) .796± .008
9	(20.32± .15) .800± .006	(22.76± .20) .896± .008
10	(22.86± .20) .900± .008	(25.30± .25) .996± .010
11	(25.40± .20) 1.000± .008	(27.84± .25) 1.096± .010
12	(27.94± .20) 1.100± .008	(30.38± .25) 1.196± .010
13	(30.48± .20) 1.200± .008	(32.92± .25) 1.296± .010
14	(33.02± .20) 1.300± .008	(35.46± .25) 1.396± .010
15	(35.56± .23) 1.400± .009	(38.00± .28) 1.496± .011
16	(38.10± .23) 1.500± .009	(40.54± .28) 1.596± .011
17	(40.64± .23) 1.600± .009	(43.08± .28) 1.696± .011
18	(43.18± .23) 1.700± .009	(45.62± .28) 1.796± .011
19	(45.72± .23) 1.800± .009	(48.16± .28) 1.896± .011
20	(48.26± .25) 1.900± .010	(50.70± .30) 1.996± .012
21	(50.80± .25) 2.000± .010	(53.24± .30) 2.096± .012
22	(53.34± .25) 2.100± .010	(55.78± .30) 2.196± .012
23	(55.88± .25) 2.200± .010	(58.32± .30) 2.296± .012
24	(58.42± .30) 2.300± .012	(60.86± .30) 2.396± .012
25	(60.96± .30) 2.400± .012	(63.40± .38) 2.496± .015



SEE SHEET 4 FOR OTHER OPTIONS

A=4455- * * N * *

ASS'Y. PROC.
A=RIGHT ANGLE
B=BOTTOM ENTRY
C=TOP ENTRY

HOUSING OPTIONS
H=4455-N2
Z=4455-N

NO. OF CKTS.

TERMINAL CODE
A=4316-4
D=4316-3B

PLATING CODE
PER SDES-88.

- NOTES:
1. MATERIAL: NYLON 6/6, 94V-0.
 2. PARTS MUST CONFORM TO SOLDERABILITY SPEC I52
 3. PARTS ARE STACKABLE END TO END ON .100 CENTERS
 4. PARTS CONFORM TO PRODUCT SPEC. 10-07.
 5. TERMINALS KINKED PER SMES-42329-100.
 6. TERMINAL MATERIAL: BRASS (OR PHOS BRONZE)
- PLATING: (P913) 100 M.I. MIN TIN/LEAD
(565) SELECT GOLD 20 M.I. MIN. OVER NICKEL 30M.I. MIN WITH 10M.I. MIN GOLD FLASH
(587) SELECT GOLD 15 M.I. MIN.: SELECT TIN/LEAD 75 M.I. MIN.: WITH OVERALL NICKEL 50 M.I. MIN

CA4	REL ABNA565 UCR2000-0003 99-7-1 SAMIEC
CA3	REL 1999-0782 5-19-99 SAMIEC
CA2	ADD/REL AAN18913 UCR1999-0001 SAMIEC 98-7-

UNLESS OTHERWISE SPECIFIED TOLERANCES: ANGULAR: 1/2°

3 PLACE ±	INCH	METRIC
2 PLACE ±		
1 PLACE ±		

DRAFT WHERE APPLICABLE MUST REMAIN WITHIN DIMENSIONS

DRWG. BY: SAMIEC, CHK'D. BY: PATEL, APP'D. BY: LENZ, SCALE: :

REVISIONS: LTR. REVISIONS

FILE NAME: S4455X1

TITLE: HOUSING ASS'Y., P.C. TAIL, MINI KK, 4455 SERIES DWG.

PART NO.: SEE CHART

MOLEX INCORPORATED, U.S.A.

SHEET NO.: 1 OF 14, DATE: 10/05/84

DRWG. NO.: SDA-4455

THIS DRAWING CONTAINS INFORMATION THAT IS PROPRIETARY TO MOLEX INC. AND SHOULD NOT BE USED WITHOUT WRITTEN PERMISSION.

14	CA4
13	BZ1
12	BY
11	CA3
10	BY
9	BZ2
8	BY
7	BY
6	BZ3
5	BZ1
4	CA2
3	BY
2	BY
1	CA4

MFG. SH. REV.

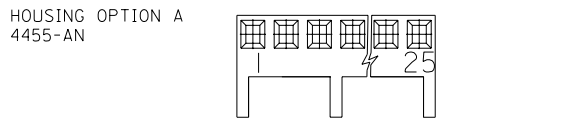
13	12	11	10	9	8	7	6	4455	4	3	2	1
ENG. NO.		HOUSING NO.		TERMINAL NO.		DIM. C	NO OF CKTS	PACKAGING		COMMENTS		
A-4455 -CZNA(P913)		4455 -N		4316 -4(P913)		.132 (3.35)	2-25	BULK		TOP ENTRY		
A-4455 -CZNA(565)		4455 -N		4316 -4(565)		.132 (3.35)	2-25	BULK		TOP ENTRY		
A-4455 -CZNA(587)		4455 -N		4316 -4(587)		.132 (3.35)	2-25	BULK		TOP ENTRY		

COLUMN NO. 1			COLUMN NO. 2			COLUMN NO. 3		
EDP NO.	ENG. NO.	NO OF CKTS	EDP NO.	ENG. NO.	NO OF CKTS	EDP NO.	ENG. NO.	NO OF CKTS
022-02-2025	-CZ02A(P913)	2	022-18-2023	-CZ02A(565)	2	022-18-2021	-CZ02A(587)	2
022-02-2035	-CZ03A(P913)	3	022-18-2033	-CZ03A(565)	3	022-18-2031	-CZ03A(587)	3
022-02-2045	-CZ04A(P913)	4	022-18-2043	-CZ04A(565)	4	022-18-2041	-CZ04A(587)	4
022-02-2055	-CZ05A(P913)	5	022-18-2053	-CZ05A(565)	5	022-18-2051	-CZ05A(587)	5
022-02-2065	-CZ06A(P913)	6	022-18-2063	-CZ06A(565)	6	022-18-2061	-CZ06A(587)	6
022-02-2075	-CZ07A(P913)	7	022-18-2073	-CZ07A(565)	7	022-18-2071	-CZ07A(587)	7
022-02-2085	-CZ08A(P913)	8	022-18-2083	-CZ08A(565)	8	022-18-2081	-CZ08A(587)	8
022-02-2095	-CZ09A(P913)	9	022-18-2093	-CZ09A(565)	9	022-18-2091	-CZ09A(587)	9
022-02-2105	-CZ10A(P913)	10	022-18-2103	-CZ10A(565)	10	022-18-2101	-CZ10A(587)	10
022-02-2115	-CZ11A(P913)	11	022-18-2113	-CZ11A(565)	11	022-18-2111	-CZ11A(587)	11
022-02-2125	-CZ12A(P913)	12	022-18-2123	-CZ12A(565)	12	022-18-2121	-CZ12A(587)	12
022-02-2135	-CZ13A(P913)	13	022-18-2133	-CZ13A(565)	13	022-18-2131	-CZ13A(587)	13
022-02-2145	-CZ14A(P913)	14	022-18-2143	-CZ14A(565)	14	022-18-2141	-CZ14A(587)	14
022-02-2155	-CZ15A(P913)	15	022-18-2153	-CZ15A(565)	15	022-18-2151	-CZ15A(587)	15
022-02-2165	-CZ16A(P913)	16	022-18-2163	-CZ16A(565)	16	022-18-2161	-CZ16A(587)	16
022-02-2175	-CZ17A(P913)	17	022-18-2173	-CZ17A(565)	17	022-18-2171	-CZ17A(587)	17
022-02-2185	-CZ18A(P913)	18	022-18-2183	-CZ18A(565)	18	022-18-2181	-CZ18A(587)	18
022-02-2195	-CZ19A(P913)	19	022-18-2193	-CZ19A(565)	19	022-18-2191	-CZ19A(587)	19
022-02-2205	-CZ20A(P913)	20	022-18-2203	-CZ20A(565)	20	022-18-2201	-CZ20A(587)	20
022-02-2215	-CZ21A(P913)	21	022-18-2213	-CZ21A(565)	21	022-18-2211	-CZ21A(587)	21
022-02-2225	-CZ22A(P913)	22	022-18-2223	-CZ22A(565)	22	022-18-2221	-CZ22A(587)	22
022-02-2235	-CZ23A(P913)	23	022-18-2233	-CZ23A(565)	23	022-18-2231	-CZ23A(587)	23
022-02-2245	-CZ24A(P913)	24	022-18-2243	-CZ24A(565)	24	022-18-2241	-CZ24A(587)	24
022-02-2255	-CZ25A(P913)	25	022-18-2253	-CZ25A(565)	25	022-18-2251	-CZ25A(587)	25

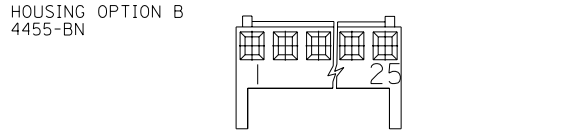
STANDARD PRODUCT
BRASS

SEE SHEET 1	SEE SHEET 1		DIMENSIONS SHOWN (METRIC) INCH		▽ = 0	▼ = 0	REVISE ONLY ON CAD SYSTEM
SEE SHEET 1	SEE SHEET 1		UNLESS OTHERWISE SPECIFIED TOLERANCES: ANGULAR ± 1/2°		TITLE HOUSING ASSEMBLY		
SEE SHEET 1	SEE SHEET 1		INCH METRIC		.100 CENTERS PC TAIL		
SEE SHEET 1	SEE SHEET 1		3 PLACE ±	±	MOLEX INCORPORATED SHEET NO. 3 DATE 9/30/94		
SEE SHEET 1	SEE SHEET 1		2 PLACE ±	±	L1SLE,ILL. 60532 U.S.A.		
SEE SHEET 1	SEE SHEET 1		1 PLACE ±	±	PART NO. SEE CHART DRWG. NO. SDA-4455		
SEE SHEET 1	BY SEE SHEET 1	DRAWING WHERE APPLICABLE MUST REMAIN WITHIN DIMENSIONS		THIS DRAWING CONTAINS INFORMATION THAT IS PROPRIETARY TO MOLEX INC. AND SHOULD NOT BE USED WITHOUT WRITTEN PERMISSION			
LTR. REVISIONS	LTR. REVISIONS	DRWG. BY K SAMIEC	CHKD. BY A PATEL	FILE NAME S4455X3	DIV. C	SIZE C	

13 12 11 10 9 8 7 6 4455 4 3 2 1

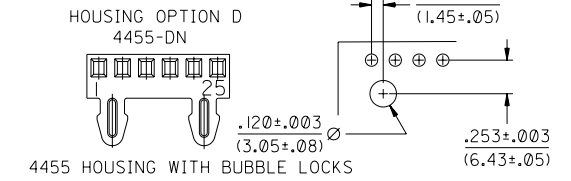


4455-N HOUSING WITH CENTER HOOK

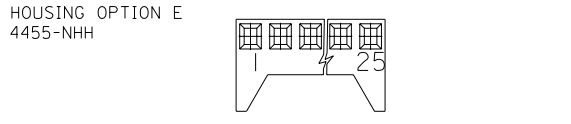


4455-N HOUSING WITH RAMP AND POLARIZING TABS

TWO BUBBLE LOCKS LOCATED AS SHOWN ON SIZES 4 THRU 28
ONE BUBBLE LOCK LOCATED BETWEEN CKTS 1 AND 2 ON CKT SIZES 2 AND 3



4455 HOUSING WITH BUBBLE LOCKS

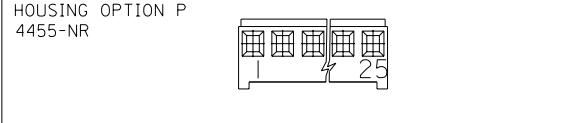


4455-N HOUSING WITH REINFORCED HOOKS

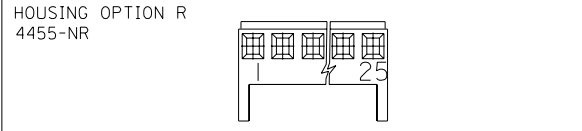
HOUSING OPTION H STANDARD HOUSING AS SHOWN WITH NOTCHED FLANGE



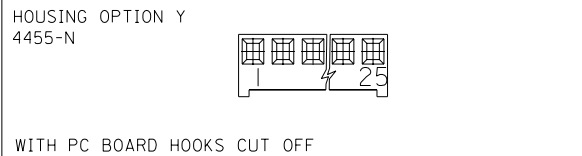
4455-N HOUSING WITH NOTCHED FLANGE



4455-N WITH RAMP (PC BOARD HOOKS CUT OFF)



4455-N WITH RAMP



WITH PC BOARD HOOKS CUT OFF

HOUSING OPTION Z 4455-N STANDARD HOUSING AS SHOWN

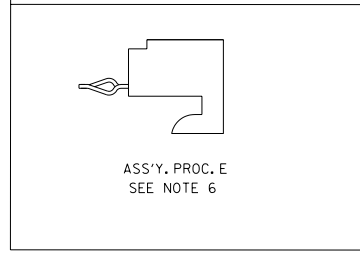
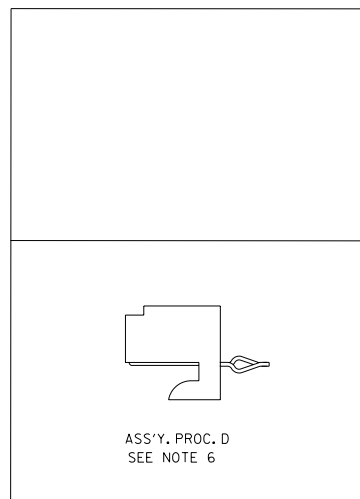
ASS'Y PROC.
A=RIGHT ANGLE
B=BOTTOM ENTRY
C=TOP ENTRY
D=BOTTOM ENTRY WITH KINKED TERM'S.
E=TOP ENTRY WITH KINKED TERM'S.

HOUSING OPTIONS
A=4455-AN
B=4455-BN
D=4455-DN
E=4455-NHH
H=4455-N2
L=4455-EN
P=4455-NR(HOOKS CUT OFF)
R=4455-NR
Y=4455-N (WITH HOOKS CUT OFF).
Z=4455-N

PLATING CODE
PERSDS-88.

TERMINAL CODE
A=4316-4 BRASS
B=6516-4 PHOS. BRONZE
D=4316-3 BRASS
G=4316-3 BRASS
J=6516-3B PHOS. BRONZE
L=6516-3C PHOS. BRONZE CAT EAR
M=6516-4A PHOS. BRONZE CAT EAR
S=30432-0200 PHOS.BRONZE HUMPBACK
T=4316-4A BRASS CAT EAR

NO. OF CKTS.



SEE SHT 1 FOR PCB LAYOUTS

SEE SHEET 1	DIMENSIONS SHOWN (METRIC) INCH	▽ = 0	▼ = 0	REVISE ONLY ON CAD SYSTEM
SEE SHEET 2	UNLESS OTHERWISE SPECIFIED TOLERANCES: ANGULAR ± 1/2°	TITLE HOUSING ASS'Y., P.C. TAIL, MINI KK 4455 SERIES DWG.		
SEE SHEET 3	3 PLACE ± INCH METRIC	PART NO. MOLEX INCORPORATED SHEET NO. 4 DATE 10/05/94		
SEE SHEET 4	2 PLACE ± ±	FILE NAME S4455X4 THIS DRAWING CONTAINS INFORMATION THAT IS PROPRIETARY TO MOLEX INC. AND SHOULD NOT BE USED WITHOUT WRITTEN PERMISSION.		
SEE SHEET 5	1 PLACE ± ±	DRWG. NO. SDA-4455		
SEE SHEET 6	DRAFT WHERE APPLICABLE MUST REMAIN WITHIN DIMENSIONS	DIV. C SIZE C		
CA2 SEE SHEET 1	DRG. BY K SAMIEC CHK'D. BY A PATEL			
BY SEE SHEET 1	APP'D. BY LENZ SCALE :			
LTR. REVISIONS	LTR. REVISIONS			

13 12 11 10 9 8 7 6 5 4 3 2 1

	13	12	11	10	9	8	7	6	4455	4	3	2	1
	ENG. NO.		HOUSING NO.		TERMINAL NO.		DIM. C	NO OF CKTS	PACKAGING		COMMENTS		
J	A-4455 -AZNB(P913)		4455 -N		6516 -4(P913)		.132 (3.35)	2-25	BULK				
	A-4455 -AZNB(565)		4455 -N		6516 -4(565)		.132 (3.35)	2-25	BULK				
	A-4455 -AZNB(587)		4455 -N		6516 -4(587)		.132 (3.35)	2-25	BULK				
I	A-4455 -BHNJ(P913)		4455 -N2		6516 -3B(P913)		.132 (3.35)	2-25	BULK				
	A-4455 -BHNJ(565)		4455 -N2		6516 -3B(565)		.132 (3.35)	2-25	BULK				
	A-4455 -BHNJ(587)		4455 -N2		6516 -3B(587)		.132 (3.35)	2-25	BULK				

F	COLUMN NO. 1			COLUMN NO. 2			COLUMN NO. 3			COLUMN NO. 4			COLUMN NO. 5			COLUMN NO. 6		
	EDP NO.	ENG. NO.	NO OF CKTS	EDP NO.	ENG. NO.	NO OF CKTS	EDP NO.	ENG. NO.	NO OF CKTS	EDP NO.	ENG. NO.	NO OF CKTS	EDP NO.	ENG. NO.	NO OF CKTS	EDP NO.	ENG. NO.	NO OF CKTS
	022-15-4025	-AZ02B(P913)	2	022-16-2024	-AZ02B(565)	2		-AZ02B(587)	2	022-14-2022	-BH02J(P913)	2	022-17-2021	-BH02J(565)	2		-BH02J(587)	2
	022-15-4035	-AZ03B(P913)	3	022-16-2034	-AZ03B(565)	3		-AZ03B(587)	3	022-14-2032	-BH03J(P913)	3	022-17-2031	-BH03J(565)	3		-BH03J(587)	3
	022-15-4045	-AZ04B(P913)	4	022-16-2044	-AZ04B(565)	4		-AZ04B(587)	4	022-14-2042	-BH04J(P913)	4	022-17-2041	-BH04J(565)	4		-BH04J(587)	4
	022-15-4055	-AZ05B(P913)	5	022-16-2054	-AZ05B(565)	5		-AZ05B(587)	5	022-14-2052	-BH05J(P913)	5	022-17-2051	-BH05J(565)	5		-BH05J(587)	5
	022-15-4065	-AZ06B(P913)	6	022-16-2064	-AZ06B(565)	6		-AZ06B(587)	6	022-14-2062	-BH06J(P913)	6	022-17-2061	-BH06J(565)	6		-BH06J(587)	6
E	022-15-4075	-AZ07B(P913)	7	022-16-2074	-AZ07B(565)	7		-AZ07B(587)	7	022-14-2072	-BH07J(P913)	7	022-17-2071	-BH07J(565)	7		-BH07J(587)	7
	022-15-4085	-AZ08B(P913)	8	022-16-2084	-AZ08B(565)	8		-AZ08B(587)	8	022-14-2082	-BH08J(P913)	8	022-17-2081	-BH08J(565)	8		-BH08J(587)	8
	022-15-4095	-AZ09B(P913)	9	022-16-2094	-AZ09B(565)	9		-AZ09B(587)	9	022-14-2092	-BH09J(P913)	9	022-17-2091	-BH09J(565)	9		-BH09J(587)	9
	022-15-4105	-AZ10B(P913)	10	022-16-2104	-AZ10B(565)	10		-AZ10B(587)	10	022-14-2102	-BH10J(P913)	10	022-17-2101	-BH10J(565)	10		-BH10J(587)	10
	022-15-4115	-AZ11B(P913)	11	022-16-2114	-AZ11B(565)	11		-AZ11B(587)	11	022-14-2112	-BH11J(P913)	11	022-17-2111	-BH11J(565)	11		-BH11J(587)	11
	022-15-4125	-AZ12B(P913)	12	022-16-2124	-AZ12B(565)	12		-AZ12B(587)	12	022-14-2122	-BH12J(P913)	12	022-17-2121	-BH12J(565)	12		-BH12J(587)	12
	022-15-4135	-AZ13B(P913)	13	022-16-2134	-AZ13B(565)	13		-AZ13B(587)	13	022-14-2132	-BH13J(P913)	13	022-17-2131	-BH13J(565)	13		-BH13J(587)	13
D	022-15-4145	-AZ14B(P913)	14	022-16-2144	-AZ14B(565)	14		-AZ14B(587)	14	022-14-2142	-BH14J(P913)	14	022-17-2141	-BH14J(565)	14		-BH14J(587)	14
	022-15-4155	-AZ15B(P913)	15	022-16-2154	-AZ15B(565)	15		-AZ15B(587)	15	022-14-2152	-BH15J(P913)	15	022-17-2151	-BH15J(565)	15		-BH15J(587)	15
	022-15-4165	-AZ16B(P913)	16	022-16-2164	-AZ16B(565)	16		-AZ16B(587)	16	022-14-2162	-BH16J(P913)	16	022-17-2161	-BH16J(565)	16		-BH16J(587)	16
	022-15-4175	-AZ17B(P913)	17	022-16-2174	-AZ17B(565)	17		-AZ17B(587)	17	022-14-2172	-BH17J(P913)	17	022-17-2171	-BH17J(565)	17		-BH17J(587)	17
	022-15-4185	-AZ18B(P913)	18	022-16-2184	-AZ18B(565)	18		-AZ18B(587)	18	022-14-2182	-BH18J(P913)	18	022-17-2181	-BH18J(565)	18		-BH18J(587)	18
	022-15-4195	-AZ19B(P913)	19	022-16-2194	-AZ19B(565)	19		-AZ19B(587)	19	022-14-2192	-BH19J(P913)	19	022-17-2191	-BH19J(565)	19		-BH19J(587)	19
C	022-15-4205	-AZ20B(P913)	20	022-16-2204	-AZ20B(565)	20		-AZ20B(587)	20	022-14-2202	-BH20J(P913)	20	022-17-2201	-BH20J(565)	20		-BH20J(587)	20
	022-15-4215	-AZ21B(P913)	21	022-16-2214	-AZ21B(565)	21		-AZ21B(587)	21	022-14-2212	-BH21J(P913)	21	022-17-2211	-BH21J(565)	21		-BH21J(587)	21
	022-15-4225	-AZ22B(P913)	22	022-16-2224	-AZ22B(565)	22		-AZ22B(587)	22	022-14-2222	-BH22J(P913)	22	022-17-2221	-BH22J(565)	22		-BH22J(587)	22
	022-15-4235	-AZ23B(P913)	23	022-16-2234	-AZ23B(565)	23		-AZ23B(587)	23	022-14-2232	-BH23J(P913)	23	022-17-2231	-BH23J(565)	23		-BH23J(587)	23
	022-15-4245	-AZ24B(P913)	24	022-16-2244	-AZ24B(565)	24		-AZ24B(587)	24	022-14-2242	-BH24J(P913)	24	022-17-2241	-BH24J(565)	24		-BH24J(587)	24
	022-15-4255	-AZ25B(P913)	25	022-16-2254	-AZ25B(565)	25		-AZ25B(587)	25	022-14-2252	-BH25J(P913)	25	022-17-2251	-BH25J(565)	25		-BH25J(587)	25

PHOS BRONZE		SEE SHEET 1	SEE SHEET 1	DIMENSIONS SHOWN (METRIC) INCH UNLESS OTHERWISE SPECIFIED TOLERANCES: ANGULAR ± 1/2°		▽ = 0	▼ = 0	REVISE ONLY ON CAD SYSTEM
		SEE SHEET 1	SEE SHEET 1	INCH METRIC		TITLE HOUSING ASSEMBLY		
		SEE SHEET 1	SEE SHEET 1	3 PLACE ±		.100 CENTERS PC TAIL		
		SEE SHEET 1	SEE SHEET 1	2 PLACE ±		MOLEX INCORPORATED SHEET NO. DATE		
		SEE SHEET 1	SEE SHEET 1	1 PLACE ±		LSLE,ILL. 60532 U.S.A. 5 9/30/94		
		SEE SHEET 1	SEE SHEET 1	DRAFT WHERE APPLICABLE MUST REMAIN WITHIN DIMENSIONS		PART NO. DRWG. NO.		
		SEE SHEET 1	SEE SHEET 1	DRG. BY: K SAMIEG CKD. BY: A PATEL		SEE CHART SDA-4455		
		SEE SHEET 1	SEE SHEET 1	APP'D. BY: LENZ SCALE		THIS DRAWING CONTAINS INFORMATION THAT IS PROPRIETARY TO MOLEX INC. AND SHOULD NOT BE USED WITHOUT WRITTEN PERMISSION.		
		LTR.	REVISIONS	LTR.		REVISIONS		DIV. C

	13	12	11	10	9	8	7	6	4455	4	3	2	1
J	ENG. NO.		HOUSING NO.		TERMINAL NO.		DIM. C	NO OF CKTS	PACKAGING		COMMENTS		
	A-4455 -ABNA(P913)		4455 -BN		4316 -4(P913)		.132 (3.35)	2-25	BULK				
	A-4455 -ADNA(P913)		4455 -DN		4316 -4(P913)		.132 (3.35)	2-25	BULK				
I	A-4455 -AENA(P913)		4455 -NHH		4316 -4(P913)		.132 (3.35)	2-25	BULK				
	A-4455 -ALNA(P913)		4455 -EN		4316 -4(P913)		.132 (3.35)	2-25	BULK				
	A-4455 -ALNM(P913)		4455 -EN		6516 -4A(P913)		.132 (3.35)	2-25	BULK				
	A-4455 -ALNB(563)		4455 -EN		6516 -4(563)		.132 (3.35)	2-25	BULK				

H													
G													

F	COLUMN NO. 1			COLUMN NO. 2			COLUMN NO. 3			COLUMN NO. 4			COLUMN NO. 5			COLUMN NO. 6		
	EDP NO.	ENG. NO.	NO OF CKTS	EDP NO.	ENG. NO.	NO OF CKTS	EDP NO.	ENG. NO.	NO OF CKTS	EDP NO.	ENG. NO.	NO OF CKTS	EDP NO.	ENG. NO.	NO OF CKTS	EDP NO.	ENG. NO.	NO OF CKTS
	022-15-4024	-AB02A(P913)	2	022-02-5024	-AD02A(P913)	2	022-15-2022	-AE02A(P913)	2		-AL02A(P913)	2		-AL02M(P913)	2	022-16-3024	-AL02B(563)	2
	022-15-4034	-AB03A(P913)	3	022-02-5034	-AD03A(P913)	3	022-15-2032	-AE03A(P913)	3		-AL03A(P913)	3		-AL03M(P913)	3	022-16-3034	-AL03B(563)	3
	022-15-4044	-AB04A(P913)	4	022-02-5044	-AD04A(P913)	4	022-15-2042	-AE04A(P913)	4		-AL04A(P913)	4		-AL04M(P913)	4	022-16-3044	-AL04B(563)	4
	022-15-4054	-AB05A(P913)	5	022-02-5054	-AD05A(P913)	5	022-15-2052	-AE05A(P913)	5		-AL05A(P913)	5	022-02-2057	-AL05M(P913)	5	022-16-3054	-AL05B(563)	5
E	022-15-4064	-AB06A(P913)	6	022-02-5064	-AD06A(P913)	6	022-15-2062	-AE06A(P913)	6		-AL06A(P913)	6		-AL06M(P913)	6	022-16-3064	-AL06B(563)	6
	022-15-4074	-AB07A(P913)	7	022-02-5074	-AD07A(P913)	7	022-15-2072	-AE07A(P913)	7	022-02-5076	-AL07A(P913)	7	022-02-2077	-AL07M(P913)	7	022-16-3074	-AL07B(563)	7
	022-15-4084	-AB08A(P913)	8	022-02-5084	-AD08A(P913)	8	022-15-2082	-AE08A(P913)	8		-AL08A(P913)	8		-AL08M(P913)	8	022-16-3084	-AL08B(563)	8
	022-15-4094	-AB09A(P913)	9	022-02-5094	-AD09A(P913)	9	022-15-2092	-AE09A(P913)	9		-AL09A(P913)	9		-AL09M(P913)	9	022-16-3094	-AL09B(563)	9
	022-15-4104	-AB10A(P913)	10	022-02-5104	-AD10A(P913)	10	022-15-2102	-AE10A(P913)	10		-AL10A(P913)	10		-AL10M(P913)	10	022-16-3104	-AL10B(563)	10
	022-15-4114	-AB11A(P913)	11	022-02-5114	-AD11A(P913)	11	022-15-2112	-AE11A(P913)	11		-AL11A(P913)	11		-AL11M(P913)	11	022-16-3114	-AL11B(563)	11
	022-15-4124	-AB12A(P913)	12	022-02-5124	-AD12A(P913)	12	022-15-2122	-AE12A(P913)	12		-AL12A(P913)	12		-AL12M(P913)	12	022-16-3124	-AL12B(563)	12
D	022-15-4134	-AB13A(P913)	13	022-02-5134	-AD13A(P913)	13	022-15-2132	-AE13A(P913)	13		-AL13A(P913)	13		-AL13M(P913)	13	022-16-3134	-AL13B(563)	13
	022-15-4144	-AB14A(P913)	14	022-02-5144	-AD14A(P913)	14	022-15-2142	-AE14A(P913)	14		-AL14A(P913)	14		-AL14M(P913)	14	022-16-3144	-AL14B(563)	14
	022-15-4154	-AB15A(P913)	15	022-02-5154	-AD15A(P913)	15	022-15-2152	-AE15A(P913)	15		-AL15A(P913)	15		-AL15M(P913)	15	022-16-3154	-AL15B(563)	15
	022-15-4164	-AB16A(P913)	16	022-02-5164	-AD16A(P913)	16	022-15-2162	-AE16A(P913)	16		-AL16A(P913)	16		-AL16M(P913)	16	022-16-3164	-AL16B(563)	16
	022-15-4174	-AB17A(P913)	17	022-02-5174	-AD17A(P913)	17	022-15-2172	-AE17A(P913)	17		-AL17A(P913)	17		-AL17M(P913)	17	022-16-3174	-AL17B(563)	17
	022-15-4184	-AB18A(P913)	18	022-02-5184	-AD18A(P913)	18	022-15-2182	-AE18A(P913)	18		-AL18A(P913)	18		-AL18M(P913)	18	022-16-3184	-AL18B(563)	18
	022-15-4194	-AB19A(P913)	19	022-02-5194	-AD19A(P913)	19	022-15-2192	-AE19A(P913)	19		-AL19A(P913)	19		-AL19M(P913)	19	022-16-3194	-AL19B(563)	19
C	022-15-4204	-AB20A(P913)	20	022-02-5204	-AD20A(P913)	20	022-15-2202	-AE20A(P913)	20		-AL20A(P913)	20		-AL20M(P913)	20	022-16-3204	-AL20B(563)	20
	022-15-4214	-AB21A(P913)	21	022-02-5214	-AD21A(P913)	21	022-15-2212	-AE21A(P913)	21		-AL21A(P913)	21		-AL21M(P913)	21	022-16-3214	-AL21B(563)	21
	022-15-4224	-AB22A(P913)	22	022-02-5224	-AD22A(P913)	22	022-15-2222	-AE22A(P913)	22		-AL22A(P913)	22		-AL22M(P913)	22	022-16-3224	-AL22B(563)	22
	022-15-4234	-AB23A(P913)	23	022-02-5234	-AD23A(P913)	23	022-15-2232	-AE23A(P913)	23		-AL23A(P913)	23		-AL23M(P913)	23	022-16-3234	-AL23B(563)	23
	022-15-4244	-AB24A(P913)	24	022-02-5244	-AD24A(P913)	24	022-15-2242	-AE24A(P913)	24		-AL24A(P913)	24		-AL24M(P913)	24	022-16-3244	-AL24B(563)	24
	022-15-4254	-AB25A(P913)	25	022-02-5254	-AD25A(P913)	25	022-15-2252	-AE25A(P913)	25		-AL25A(P913)	25		-AL25M(P913)	25	022-16-3254	-AL25B(563)	25

B													
A													

SEE SHEET I	SEE SHEET I	DIMENSIONS SHOWN (METRIC) INCH UNLESS OTHERWISE SPECIFIED TOLERANCES: ANGULAR ± 1/2° 3 PLACE ± 2 PLACE ± 1 PLACE ± DRAFT WHERE APPLICABLE MUST REMAIN WITHIN DIMENSIONS DRWG. NO. S4455X7 CHKD. BY: A PATEL SCALE:	DIMENSIONS SHOWN (METRIC) INCH UNLESS OTHERWISE SPECIFIED TOLERANCES: ANGULAR ± 1/2° 3 PLACE ± 2 PLACE ± 1 PLACE ± DRAFT WHERE APPLICABLE MUST REMAIN WITHIN DIMENSIONS DRWG. NO. S4455X7 CHKD. BY: A PATEL SCALE:	DIMENSIONS SHOWN (METRIC) INCH UNLESS OTHERWISE SPECIFIED TOLERANCES: ANGULAR ± 1/2° 3 PLACE ± 2 PLACE ± 1 PLACE ± DRAFT WHERE APPLICABLE MUST REMAIN WITHIN DIMENSIONS DRWG. NO. S4455X7 CHKD. BY: A PATEL SCALE:
SEE SHEET I	SEE SHEET I		SEE SHEET I	SEE SHEET I
SEE SHEET I	SEE SHEET I		SEE SHEET I	SEE SHEET I
SEE SHEET I	SEE SHEET I		SEE SHEET I	SEE SHEET I
SEE SHEET I	SEE SHEET I		SEE SHEET I	SEE SHEET I
SEE SHEET I	SEE SHEET I		SEE SHEET I	SEE SHEET I
LTR.	REVISIONS	LTR.	REVISIONS	

TITLE: HOUSING ASSEMBLY PART NO.: SEE CHART FILE NAME: S4455X7 THIS DRAWING CONTAINS INFORMATION THAT IS PROPRIETARY TO MOLEX INC. AND SHOULD NOT BE USED WITHOUT WRITTEN PERMISSION.	REVISE ONLY ON CAD SYSTEM SHEET NO. 7 DATE 10 / 5 / 94 DRWG. NO. SDA-4455 DIV. C SIZE C
--	--

	13	12	11	10	9	8	7	6	5	4	3	2	1
--	----	----	----	----	---	---	---	---	---	---	---	---	---

	13	12	11	10	9	8	7	6	4455	4	3	2	1						
J	ENG. NO.		HOUSING NO.		TERMINAL NO.		DIM. C	NO OF CKTS	PACKAGING		COMMENTS				J				
	A-4455 -BHNS(P913)		4455 -N		30432-0200		.140 (3.56)	2-25	BULK										
	A-4455 -CPNA(587)		4455 -NR		4316 -4(587)		.132 (3.35)	2-25	BULK										
I	A-4455 -CYNA(565)		4455 -N		4316 -4(565)		.132 (3.35)	2-25	BULK						I				
	A-4455 -CYNA(P913)		4455 -N		4316 -4(P913)		.132 (3.35)	2-25	BULK										
	A-4455 -CBNA(P913)		4455 -BN		4316 -4(P913)		.132 (3.35)	2-25	BULK										
	A-4455 -CRNA(P913)		4455 -NR		4316 -4(P913)		.132 (3.35)	2-25	BULK										
H															H				
G															G				
F	COLUMN NO. 1			COLUMN NO. 2			COLUMN NO. 3			COLUMN NO. 4			COLUMN NO. 5			COLUMN NO. 6			F
	EDP NO.	ENG. NO.	NO OF CKTS	EDP NO.	ENG. NO.	NO OF CKTS	EDP NO.	ENG. NO.	NO OF CKTS	EDP NO.	ENG. NO.	NO OF CKTS	EDP NO.	ENG. NO.	NO OF CKTS	EDP NO.	ENG. NO.	NO OF CKTS	F
	022-02-7027	-BH02S(P913)	2		-CP02A(587)	2	022-18-2026	-CY02A(565)	2	022-02-7023	-CY02A(P913)	2	022-15-4028	-CB02A(P913)	2	022-65-3020	-CR02A(P913)	2	
	022-02-7037	-BH03S(P913)	3		-CP03A(587)	3	022-18-2036	-CY03A(565)	3	022-02-7033	-CY03A(P913)	3	022-15-4038	-CB03A(P913)	3	022-65-3030	-CR03A(P913)	3	
	022-02-7047	-BH04S(P913)	4		-CP04A(587)	4	022-18-2046	-CY04A(565)	4	022-02-7043	-CY04A(P913)	4	022-15-4048	-CB04A(P913)	4	022-65-3040	-CR04A(P913)	4	
	022-02-7057	-BH05S(P913)	5	022-18-2057	-CP05A(587)	5	022-18-2056	-CY05A(565)	5	022-02-7053	-CY05A(P913)	5	022-15-4058	-CB05A(P913)	5	022-65-3050	-CR05A(P913)	5	
	022-02-7067	-BH06S(P913)	6		-CP06A(587)	6	022-18-2066	-CY06A(565)	6	022-02-7063	-CY06A(P913)	6	022-15-4068	-CB06A(P913)	6	022-65-3060	-CR06A(P913)	6	
	022-02-7077	-BH07S(P913)	7		-CP07A(587)	7	022-18-2076	-CY07A(565)	7	022-02-7073	-CY07A(P913)	7	022-15-4078	-CB07A(P913)	7	022-65-3070	-CR07A(P913)	7	
	022-02-7087	-BH08S(P913)	8		-CP08A(587)	8	022-18-2086	-CY08A(565)	8	022-02-7083	-CY08A(P913)	8	022-15-4088	-CB08A(P913)	8	022-65-3080	-CR08A(P913)	8	
	022-02-7097	-BH09S(P913)	9		-CP09A(587)	9	022-18-2096	-CY09A(565)	9	022-02-7093	-CY09A(P913)	9	022-15-4098	-CB09A(P913)	9	022-65-3090	-CR09A(P913)	9	
	022-02-7107	-BH10S(P913)	10		-CP10A(587)	10	022-18-2106	-CY10A(565)	10	022-02-7103	-CY10A(P913)	10	022-15-4108	-CB10A(P913)	10	022-65-3100	-CR10A(P913)	10	
	022-02-7117	-BH11S(P913)	11		-CP11A(587)	11	022-18-2116	-CY11A(565)	11	022-02-7113	-CY11A(P913)	11	022-15-4118	-CB11A(P913)	11	022-65-3110	-CR11A(P913)	11	
	022-02-7127	-BH12S(P913)	12		-CP12A(587)	12	022-18-2126	-CY12A(565)	12	022-02-7123	-CY12A(P913)	12	022-15-4128	-CB12A(P913)	12	022-65-3120	-CR12A(P913)	12	
	022-02-7137	-BH13S(P913)	13		-CP13A(587)	13	022-18-2136	-CY13A(565)	13	022-02-7133	-CY13A(P913)	13	022-15-4138	-CB13A(P913)	13	022-65-3130	-CR13A(P913)	13	
	022-02-7147	-BH14S(P913)	14		-CP14A(587)	14	022-18-2146	-CY14A(565)	14	022-02-7143	-CY14A(P913)	14	022-15-4148	-CB14A(P913)	14	022-65-3140	-CR14A(P913)	14	
	022-02-7157	-BH15S(P913)	15		-CP15A(587)	15	022-18-2156	-CY15A(565)	15	022-02-7153	-CY15A(P913)	15	022-15-4158	-CB15A(P913)	15	022-65-3150	-CR15A(P913)	15	
	022-02-7167	-BH16S(P913)	16		-CP16A(587)	16	022-18-2166	-CY16A(565)	16	022-02-7163	-CY16A(P913)	16	022-15-4168	-CB16A(P913)	16	022-65-3160	-CR16A(P913)	16	
	022-02-7177	-BH17S(P913)	17		-CP17A(587)	17	022-18-2176	-CY17A(565)	17	022-02-7173	-CY17A(P913)	17	022-15-4178	-CB17A(P913)	17	022-65-3170	-CR17A(P913)	17	
	022-02-7187	-BH18S(P913)	18		-CP18A(587)	18	022-18-2186	-CY18A(565)	18	022-02-7183	-CY18A(P913)	18	022-15-4188	-CB18A(P913)	18	022-65-3180	-CR18A(P913)	18	
	022-02-7197	-BH19S(P913)	19		-CP19A(587)	19	022-18-2196	-CY19A(565)	19	022-02-7193	-CY19A(P913)	19	022-15-4198	-CB19A(P913)	19	022-65-3190	-CR19A(P913)	19	
	022-02-7207	-BH20S(P913)	20		-CP20A(587)	20	022-18-2206	-CY20A(565)	20	022-02-7203	-CY20A(P913)	20	022-15-4208	-CB20A(P913)	20	022-65-3200	-CR20A(P913)	20	
	022-02-7217	-BH21S(P913)	21		-CP21A(587)	21	022-18-2216	-CY21A(565)	21	022-02-7213	-CY21A(P913)	21	022-15-4218	-CB21A(P913)	21	022-65-3210	-CR21A(P913)	21	
	022-02-7227	-BH22S(P913)	22		-CP22A(587)	22	022-18-2226	-CY22A(565)	22	022-02-7223	-CY22A(P913)	22	022-15-4228	-CB22A(P913)	22	022-65-3220	-CR22A(P913)	22	
	022-02-7237	-BH23S(P913)	23		-CP23A(587)	23	022-18-2236	-CY23A(565)	23	022-02-7233	-CY23A(P913)	23	022-15-4238	-CB23A(P913)	23	022-65-3230	-CR23A(P913)	23	
	022-02-7247	-BH24S(P913)	24		-CP24A(587)	24	022-18-2246	-CY24A(565)	24	022-02-7243	-CY24A(P913)	24	022-15-4248	-CB24A(P913)	24	022-65-3240	-CR24A(P913)	24	
	022-02-7257	-BH25S(P913)	25		-CP25A(587)	25	022-18-2256	-CY25A(565)	25	022-02-7253	-CY25A(P913)	25	022-15-4258	-CB25A(P913)	25	022-65-3250	-CR25A(P913)	25	
B															B				
A															A				
	13	12	11	10	9	8	7	6	5	4	3	2	1						

SEE SHEET 1	SEE SHEET 1	DIMENSIONS SHOWN (METRIC) INCH UNLESS OTHERWISE SPECIFIED TOLERANCES: ANGULAR ± 1/2°		REVISIONS ONLY ON CAD SYSTEM
SEE SHEET 1	SEE SHEET 1	INCH METRIC		TITLE HOUSING ASSEMBLY
SEE SHEET 1	SEE SHEET 1	3 PLACE ±	±	MOLEX INCORPORATED LITTLE ROCK, AR 72069
SEE SHEET 1	SEE SHEET 1	2 PLACE ±	±	SHEET NO. 11 DATE 10/6/94
SEE SHEET 1	SEE SHEET 1	1 PLACE ±	±	U.S.A.
SEE SHEET 1	SEE SHEET 1	DRAFT WHERE APPLICABLE MUST REMAIN WITHIN DIMENSIONS		PART NO. SD A-4455
SEE SHEET 1	SEE SHEET 1	DRWG. BY K. SAMIEC	CHK'D. BY A. PATEL	SCALE
SEE SHEET 1	SEE SHEET 1	APP'D. BY LENZ	SCALE	THIS DRAWING CONTAINS INFORMATION THAT IS PROPRIETARY TO MOLEX INC. AND SHOULD NOT BE USED WITHOUT WRITTEN PERMISSION
LTR.	REVISIONS	LTR.	REVISIONS	DIV. C SIZE C

ENG. NO.	HOUSING NO.	TERMINAL NO.	DIM. C	NO OF CKTS	PACKAGING	COMMENTS
A-4455 -CZNA(132)	4455 -N	4316 -4(132)	.132 (3,35)	2-25	BULK	
A-4455 -CZNA(568)	4455 -N	4316 -4(568)	.132 (3,35)	2-25	BULK	
A-4455 -CZNB(501)	4455 -N	6516 -4(501)	.132 (3,35)	2-25	BULK	
A-4455 -CZNB(568)	4455 -N	6516 -4(568)	.132 (3,35)	2-25	BULK	
A-4455 -CZNG(P913)	4455 -N	4316 -3(P913)	.401 (10,19)	2-25	BULK	
A-4455 -CZNB(516)	4455 -N	6516 -4(516)	.132 (3,35)	2-25	BULK	

H
G

COLUMN NO. 1			COLUMN NO. 2			COLUMN NO. 3			COLUMN NO. 4			COLUMN NO. 5			COLUMN NO. 6			
EDP NO.	ENG. NO.	NO OF CKTS	EDP NO.	ENG. NO.	NO OF CKTS	EDP NO.	ENG. NO.	NO OF CKTS	EDP NO.	ENG. NO.	NO OF CKTS	EDP NO.	ENG. NO.	NO OF CKTS	EDP NO.	ENG. NO.	NO OF CKTS	
	-CZ02A(132)	2	022-18-2025	-CZ02A(568)	2	022-17-3023	-CZ02B(501)	2	022-18-2024	-CZ02B(568)	2	022-02-7022	-CZ02G(P913)	2	022-16-2029	-CZ02B(516)	2	
	-CZ03A(132)	3	022-18-2035	-CZ03A(568)	3	022-17-3033	-CZ03B(501)	3	022-18-2034	-CZ03B(568)	3	022-02-7032	-CZ03G(P913)	3	022-16-2039	-CZ03B(516)	3	
	-CZ04A(132)	4	022-18-2045	-CZ04A(568)	4	022-17-3043	-CZ04B(501)	4	022-18-2044	-CZ04B(568)	4	022-02-7042	-CZ04G(P913)	4	022-16-2049	-CZ04B(516)	4	
	-CZ05A(132)	5	022-18-2055	-CZ05A(568)	5	022-17-3053	-CZ05B(501)	5	022-18-2054	-CZ05B(568)	5	022-02-7052	-CZ05G(P913)	5	022-16-2059	-CZ05B(516)	5	
	-CZ06A(132)	6	022-18-2065	-CZ06A(568)	6	022-17-3063	-CZ06B(501)	6	022-18-2064	-CZ06B(568)	6	022-02-7062	-CZ06G(P913)	6	022-16-2069	-CZ06B(516)	6	
	-CZ07A(132)	7	022-18-2075	-CZ07A(568)	7	022-17-3073	-CZ07B(501)	7	022-18-2074	-CZ07B(568)	7	022-02-7072	-CZ07G(P913)	7	022-16-2079	-CZ07B(516)	7	
	-CZ08A(132)	8	022-18-2085	-CZ08A(568)	8	022-17-3083	-CZ08B(501)	8	022-18-2084	-CZ08B(568)	8	022-02-7082	-CZ08G(P913)	8	022-16-2089	-CZ08B(516)	8	
	-CZ09A(132)	9	022-18-2095	-CZ09A(568)	9	022-17-3093	-CZ09B(501)	9	022-18-2094	-CZ09B(568)	9	022-02-7092	-CZ09G(P913)	9	022-16-2099	-CZ09B(516)	9	
	-CZ10A(132)	10	022-18-2105	-CZ10A(568)	10	022-17-3103	-CZ10B(501)	10	022-18-2104	-CZ10B(568)	10	022-02-7102	-CZ10G(P913)	10	022-16-2109	-CZ10B(516)	10	
	-CZ11A(132)	11	022-18-2115	-CZ11A(568)	11	022-17-3113	-CZ11B(501)	11	022-18-2114	-CZ11B(568)	11	022-02-7112	-CZ11G(P913)	11	022-16-2119	-CZ11B(516)	11	
	-CZ12A(132)	12	022-18-2125	-CZ12A(568)	12	022-17-3123	-CZ12B(501)	12	022-18-2124	-CZ12B(568)	12	022-02-7122	-CZ12G(P913)	12	022-16-2129	-CZ12B(516)	12	
	-CZ13A(132)	13	022-18-2135	-CZ13A(568)	13	022-17-3133	-CZ13B(501)	13	022-18-2134	-CZ13B(568)	13	022-02-7132	-CZ13G(P913)	13	022-16-2139	-CZ13B(516)	13	
	-CZ14A(132)	14	022-18-2145	-CZ14A(568)	14	022-17-3143	-CZ14B(501)	14	022-18-2144	-CZ14B(568)	14	022-02-7142	-CZ14G(P913)	14	022-16-2149	-CZ14B(516)	14	
	-CZ15A(132)	15	022-18-2155	-CZ15A(568)	15	022-17-3153	-CZ15B(501)	15	022-18-2154	-CZ15B(568)	15	022-02-7152	-CZ15G(P913)	15	022-16-2159	-CZ15B(516)	15	
	-CZ16A(132)	16	022-18-2165	-CZ16A(568)	16	022-17-3163	-CZ16B(501)	16	022-18-2164	-CZ16B(568)	16	022-02-7162	-CZ16G(P913)	16	022-16-2169	-CZ16B(516)	16	
	-CZ17A(132)	17	022-18-2175	-CZ17A(568)	17	022-17-3173	-CZ17B(501)	17	022-18-2174	-CZ17B(568)	17	022-02-7172	-CZ17G(P913)	17	022-16-2179	-CZ17B(516)	17	
	-CZ18A(132)	18	022-18-2185	-CZ18A(568)	18	022-17-3183	-CZ18B(501)	18	022-18-2184	-CZ18B(568)	18	022-02-7182	-CZ18G(P913)	18	022-16-2189	-CZ18B(516)	18	
	022-26-1191	-CZ19A(132)	19	022-18-2195	-CZ19A(568)	19	022-17-3193	-CZ19B(501)	19	022-18-2194	-CZ19B(568)	19	022-02-7192	-CZ19G(P913)	19	022-16-2199	-CZ19B(516)	19
	-CZ20A(132)	20	022-18-2205	-CZ20A(568)	20	022-17-3203	-CZ20B(501)	20	022-18-2204	-CZ20B(568)	20	022-02-7202	-CZ20G(P913)	20	022-16-2209	-CZ20B(516)	20	
	-CZ21A(132)	21	022-18-2215	-CZ21A(568)	21	022-17-3213	-CZ21B(501)	21	022-18-2214	-CZ21B(568)	21	022-02-7212	-CZ21G(P913)	21	022-16-2219	-CZ21B(516)	21	
	-CZ22A(132)	22	022-18-2225	-CZ22A(568)	22	022-17-3223	-CZ22B(501)	22	022-18-2224	-CZ22B(568)	22	022-02-7222	-CZ22G(P913)	22	022-16-2229	-CZ22B(516)	22	
	-CZ23A(132)	23	022-18-2235	-CZ23A(568)	23	022-17-3233	-CZ23B(501)	23	022-18-2234	-CZ23B(568)	23	022-02-7232	-CZ23G(P913)	23	022-16-2239	-CZ23B(516)	23	
	-CZ24A(132)	24	022-18-2245	-CZ24A(568)	24	022-17-3243	-CZ24B(501)	24	022-18-2244	-CZ24B(568)	24	022-02-7242	-CZ24G(P913)	24	022-16-2249	-CZ24B(516)	24	
	-CZ25A(132)	25	022-18-2255	-CZ25A(568)	25	022-17-3253	-CZ25B(501)	25	022-18-2254	-CZ25B(568)	25	022-02-7252	-CZ25G(P913)	25	022-16-2259	-CZ25B(516)	25	

B

SEE SHEET I	SEE SHEET I	SEE SHEET I	SEE SHEET I	SEE SHEET I	SEE SHEET I	SEE SHEET I	SEE SHEET I	SEE SHEET I	SEE SHEET I	SEE SHEET I	SEE SHEET I	SEE SHEET I	SEE SHEET I	SEE SHEET I	SEE SHEET I	SEE SHEET I	SEE SHEET I	SEE SHEET I	
DIMENSIONS SHOWN (METRIC) INCH UNLESS OTHERWISE SPECIFIED TOLERANCES: ANGULAR ± 1/2° 3 PLACE ± INCH METRIC 2 PLACE ± INCH METRIC 1 PLACE ± INCH METRIC										DRAFT WHERE APPLICABLE MUST REMAIN WITHIN DIMENSIONS		DIMENSIONS SHOWN (METRIC) INCH UNLESS OTHERWISE SPECIFIED TOLERANCES: ANGULAR ± 1/2° 3 PLACE ± INCH METRIC 2 PLACE ± INCH METRIC 1 PLACE ± INCH METRIC		DRAFT WHERE APPLICABLE MUST REMAIN WITHIN DIMENSIONS					
LTR. REVISIONS LTR. REVISIONS										DRW. BY: K. SAMIEC APP'D. BY: LENZ		CHK'D. BY: A. PATEL SCALE:		TITLE: HOUSING ASSEMBLY PART NO.: SEE CHART FILE NAME: S4455X12		SHEET NO.: 12 DATE: 10 / 6 / 94		DIV. C SIZE C	

