

SERIES 61

.250" PCB Barrier Terminal Strip

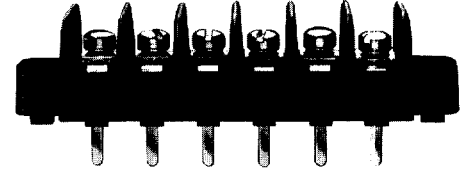
Description

The series 61 barrier terminal strip is our smallest, highest density product. The product series offers an alternative to European designs which require under-sized screwdrivers, often not carried by field technicians.

Made in the USA, all Beau terminal blocks embody the highest quality standards in the industry - using the finest materials and world class manufacturing processes. They meet or exceed all applicable industry standards.

Features

- **High density**, .250" spacing, uses minimum PCB area.
- **No special tools** are required for the 61 series tri-barrier terminal strip. A common No. 2 screwdriver is used to terminate the wires.
- **Mold to exact length**, with no ugly saw cuts, Beau terminal strips make your products look more professional. The terminal block is the one component that your customer is sure to see.



PRODUCT RATINGS

#3-48 FILLISTER HEAD SCREW

UL	Class B	10 Amps @ 300 V	18 AWG
	Class C	10 Amps @ 150 V	18 AWG
CSA	Class B	10 Amps @ 150 V	18 AWG
	Class C	10 Amps @ 150 V	18 AWG

#3-48 WIRE CLAMP SCREW

UL	Class B	10 Amps @ 300 V	18 AWG
	Class C	10 Amps @ 150 V	18 AWG
CSA	Class B	10 Amps @ 150 V	18 AWG
	Class C	10 Amps @ 150 V	18 AWG
	Class D	10 Amps @ 150 V	18 AWG

APPROVALS

UL	File No. E48521
	Guide No. XCFR2
CSA	File No. 025562

TECHNICAL SPECIFICATIONS

ELECTRICAL

DWV	10500 VDC
IR	>5000 Megohms

MECHANICAL

Tightening torque	3 in-lbs.
Maximum torque	3.5 in-lbs.
Wire strip length	5/16"
Wire Range	18 to 22 AWG

ENVIRONMENTAL

Continuous Use Temp	
RTI electrical	130°C
RTI mechanical w/o impact	140°C

MATERIALS

Insulator	Thermoplastic, UL94V-0, black
Terminal	Brass, tin-lead plate
Screws	#3-48, phillips/slotted, brass, nickel plate

OPTIONS

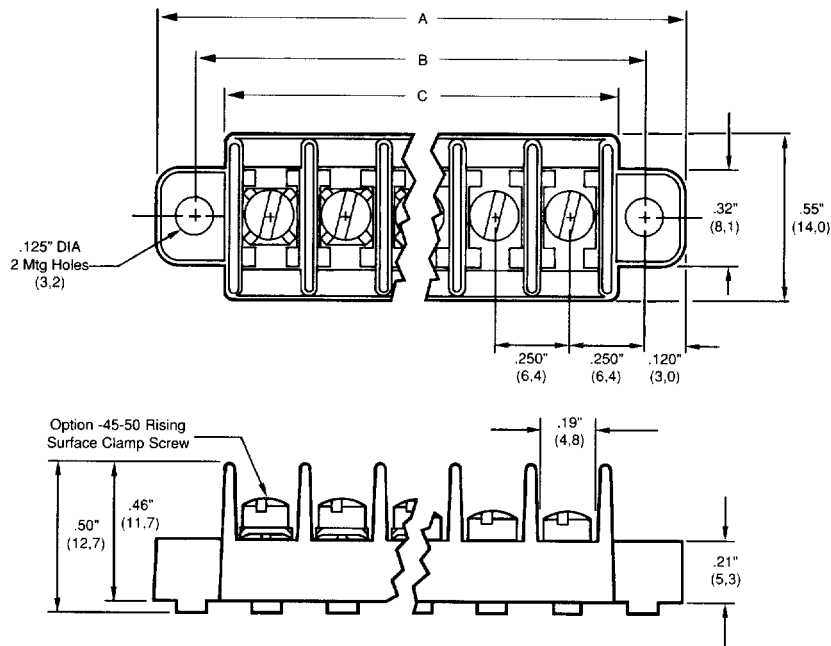
-45	Slotted screw
-50	Clamp washer, phillips/slotted screw
-58	No screws, barrier only
-59	Screws supplied unassembled
-C	No mounting ends
-W	Supplied without standoff pads

HOW TO ORDER

6	1	X	X	X	X	X
SERIES	TERMINAL STYLE	NO. OF POLES	OPTIONS			
	1 5	2 to 32	(Dash #s above and opposite page)			

*Consult factory for combinations of screw options.

SERIES 61

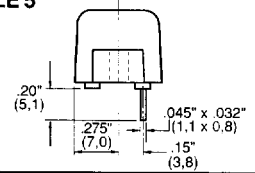


TERMINAL STYLES

STYLE 1
No PC
Terminal



STYLE 5
PC



No. of Circuits	A		B		C	
	in.	mm	in.	mm	in.	mm
2	.99	25,1	.75	19,1	.57	14,5
3	1.24	31,5	1.00	25,4	.82	20,8
4	1.49	37,8	1.25	31,8	1.07	27,2
5	1.74	44,2	1.50	38,1	1.32	33,5
6	1.99	50,5	1.75	44,5	1.57	39,9
7	2.24	56,9	2.00	50,8	1.82	46,2
8	2.49	63,2	2.25	57,2	2.07	52,6
9	2.74	69,6	2.50	63,5	2.32	58,9
10	2.99	75,9	2.75	69,9	2.57	65,3
11	3.24	82,3	3.00	76,2	2.82	71,6
12	3.49	88,6	3.25	82,6	3.07	78,0
13	3.74	95,0	3.50	88,9	3.32	84,3
14	3.99	101,3	3.75	95,3	3.57	90,7
15	4.24	107,7	4.00	101,6	3.82	97,0
16	4.49	114,0	4.25	108,0	4.07	103,4
17	4.74	120,4	4.50	114,3	4.32	109,7
18	4.99	126,7	4.75	120,7	4.57	116,1
19	5.24	133,1	5.00	127,0	4.82	122,4
20	5.49	139,4	5.25	133,4	5.07	128,8
21	5.74	145,8	5.50	139,7	5.32	135,1
22	5.99	152,1	5.75	146,1	5.57	141,5
23	6.24	158,5	6.00	152,4	5.82	147,8
24	6.49	164,8	6.25	158,8	6.07	154,2
25	6.74	171,2	6.50	165,1	6.32	160,5
26	6.99	177,5	6.75	171,5	6.57	166,9
27	7.24	183,9	7.00	177,8	6.82	173,2
28	7.49	190,2	7.25	184,2	7.07	179,6
29	7.74	196,6	7.50	190,5	7.32	185,9
30	7.99	202,9	7.75	196,9	7.57	192,3
31	8.24	209,3	8.00	203,2	7.82	198,6
32	8.49	215,6	8.25	209,6	8.07	205,0