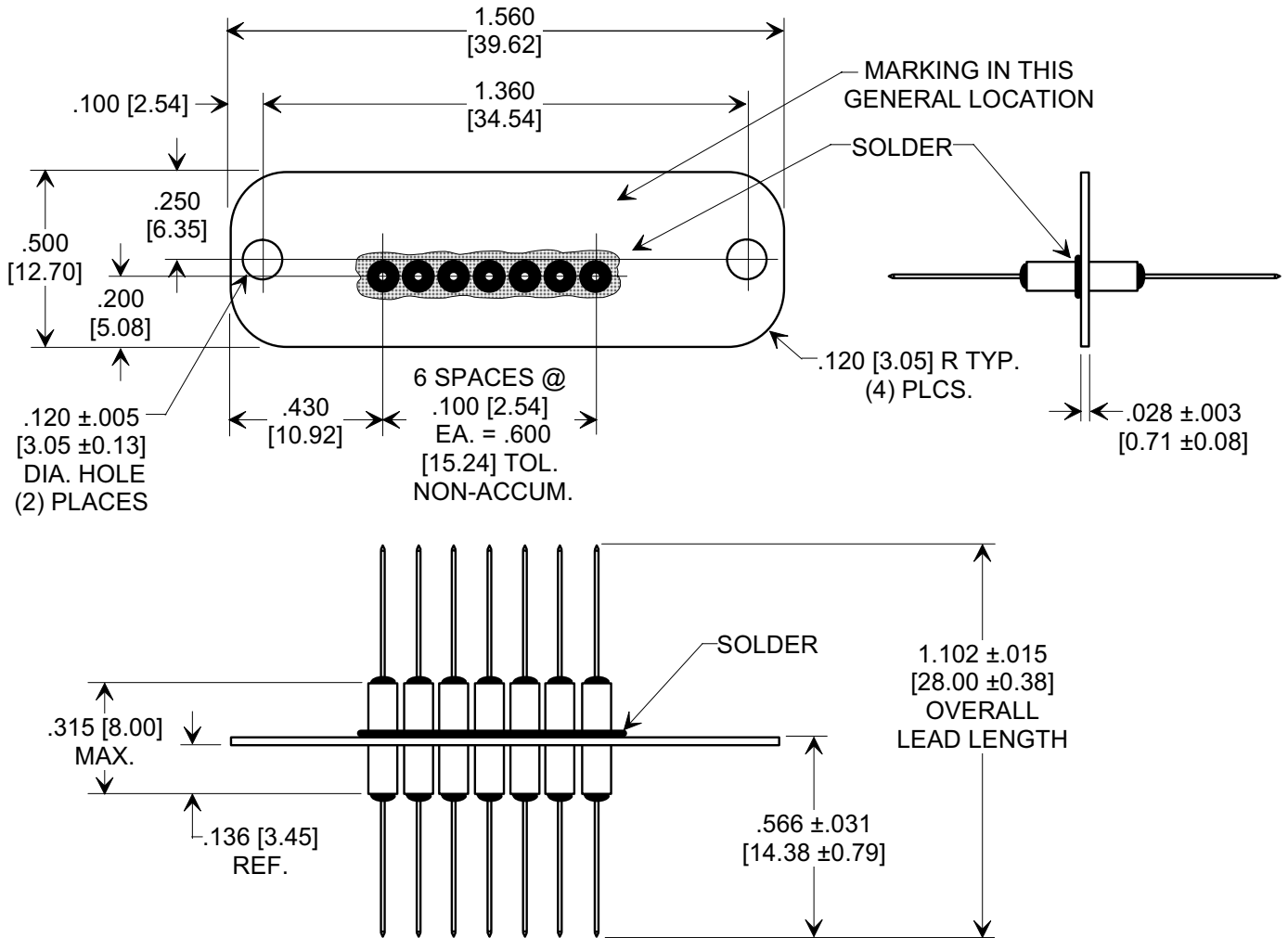
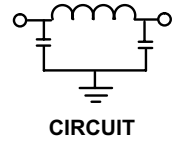


MARKETING SALES DRAWING

DIMENSIONS IN INCHES - DO NOT SCALE THIS DRAWING
 DIMENSIONS IN METRIC - []

Electrical Testing
 per Tusonix standard
 test plans and Mil-Std-202
 Test Methods.



NOTE:

- MATERIALS:
 PLATE: .028" ± .003 [0.71 ± 0.08] BRASS, MATTE TIN FINISH.
 LEADS: .025" ± .002 [0.63 ± 0.05] DIA. PHOSPHOR BRONZE, GOLD OVER NICKEL FINISH.
- MARKING TO BE TUSONIX PRODUCTION PART NUMBER AND DATE CODE.

Cx (pF)	CIRCUIT	WVDC (+125°C)	IR (MIN.)	CURRENT I _{dc} (A)	MINIMUM NO LOAD INSERTION LOSS @ 25°C (dB) PER MIL-STD-220		
					10 MHz	100 MHz	1 GHz
800/1,200	π	100	10 G Ω	5	2	24	55

X-2015 Rev-0 REVISION RECORD Original Release C.O. WAS SK 7387-001. SM 02-17-99 19990205-1-04	0	--TOLERANCES-- Unless Otherwise Specified DECIMAL ± .010 [0.25] ANGLES ±	Title FILTER PLATE 7 POSITION		
	1		Drawn S.M. 06-19-99		
	TUSONIX		Approved B.Mc. 06-19-99		
	TUCSON, ARIZONA		A	7907-000	