

TITLE: SPECIFICATION CONTROL DRAWING.

PART IDENTIFIER: B2-900-50-25

DESCRIPTION: SURFACE MOUNT BALUN TRANSFORMER

ASSEMBLY DWG: 2001284

1.0 SPECIFICATIONS:

1.1 ELECTRICAL:

- 1.1.1 FREQUENCY RANGE: 0.8 - 1.0 GHZ.
- 1.1.2 INPUT POWER: 100 WATTS.
- 1.1.3 TEMPERATURE RANGE: -55°C TO 125°C.
- 1.1.9 SCHEMATIC: SEE SHEET 2, FIGURE 2.

1.2 MECHANICAL:

- 1.2.1 OUTLINE DWG: SEE SHEET 2, FIGURE 1.
- 1.2.1.1 PINOUT:

| | PORTS | |
|--------|-------|------|
| INPUT | 1 | 4 |
| OUTPUT | 3, 4 | 1, 2 |
| GROUND | 2 | 3 |

- 1.2.2 WORKMANSHIP: PER MIL-PRF-55342.

1.3 ENVIRONMENTAL:

- 1.3.1 OPERATING TEMPERATURE RANGE: -55°C TO +125°C.

2.0 UNIT MARKING: EMCT, PART ID AND PIN 1 DESIGNATION.
LEGIBILITY AND PERMANENCY PER MIL-STD-130.

3.0 QUALITY ASSURANCE:

3.1 100% DCR FOR CONTINUITY

| PORTS | VALUE |
|--------|---------|
| 1 TO 4 | ≤ 0.6Ω |
| 2 TO 3 | ≤ 0.2Ω |
| 1 TO 3 | > 100KΩ |

3.2 SAMPLE INSPECT PER ANSI/ASQC Z1.4, GENERAL INSPECTION LEVEL II, AQL=1.0

- 3.2.1 VISUAL AND MECHANICAL EXAMINATION FOR CONFORMANCE TO OUTLINE DRAWING REQUIREMENTS.

3.3 TEST DATA REQUIREMENTS:

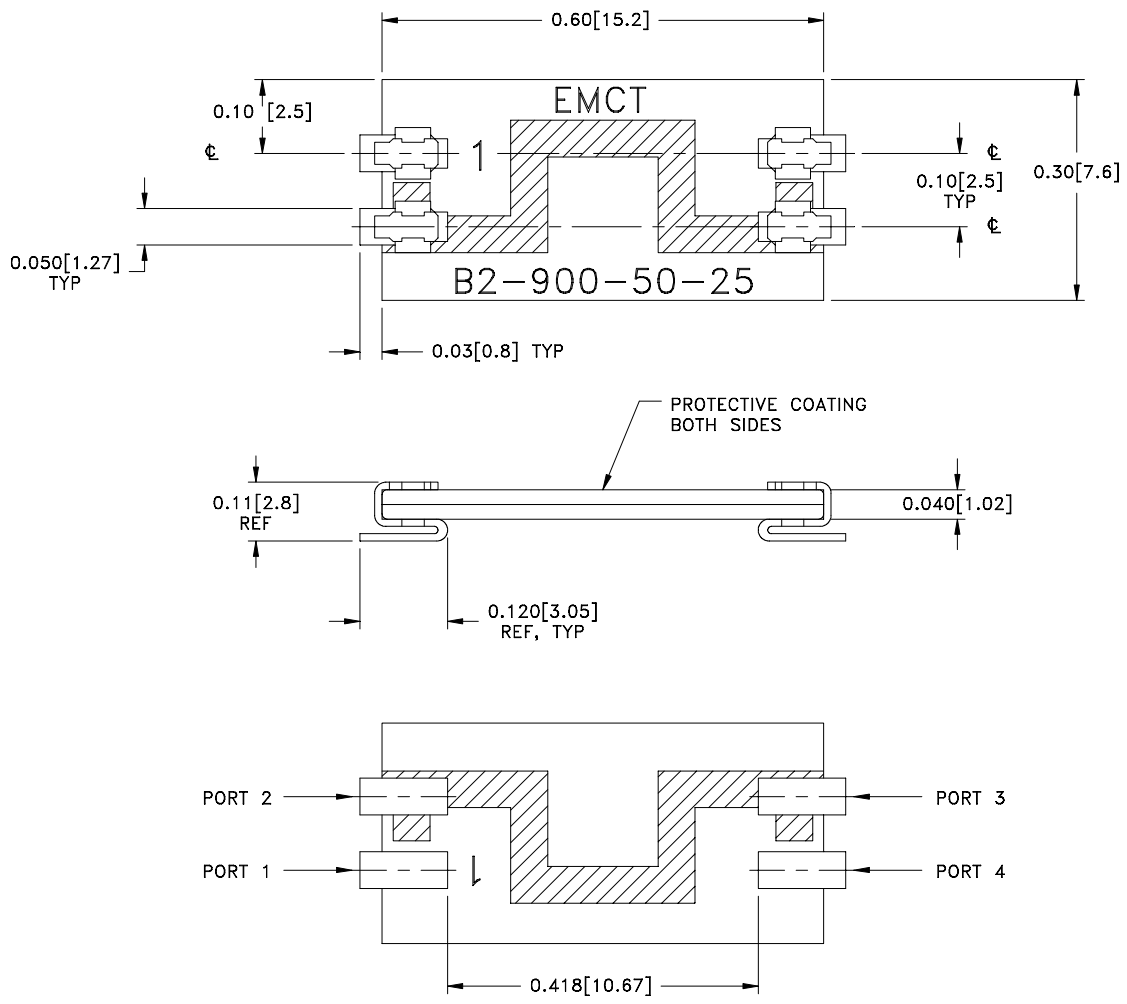
- 3.3.1 NO TEST DATA REQUIRED FOR CUSTOMER.
- 3.3.2 DATA RETENTION - 24 MONTHS.

4.0 PACKAGING: STANDARD PACK PER MC0023.

| | | | | | | | | | |
|-------------------------------|--|--------------------------|--|------------|--|----------------|------------|-----------|--|
| ENG | | PUR | | MFG | | PLAN | | SM | |
| CC | | | | QA | | | | | |
| EMC TECHNOLOGY, INC | | CAGE CODE # 24602 | | | | DWG # | 1009045000 | | |
| 1971 OLD CUTHBERT ROAD | | CHANGE NOTICE | | EN 02-012 | | REV LVL | E | | |
| CHERRY HILL, NJ 08034 | | | | | | SHEET | 1 OF 2 | | |

PART ID REF
B2-900-50-25

FIGURE 1

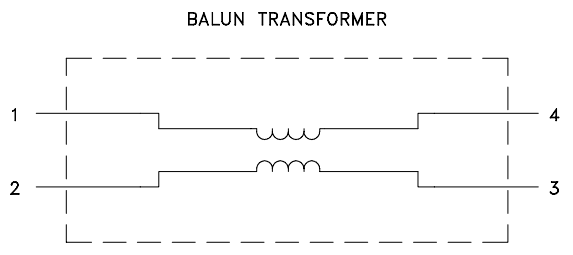


MECHANICAL SPECIFICATIONS:

- SUBSTRATE:
MATERIAL - ALUMINA 96%, MIL-I-10.
- TERMINAL:
MATERIAL - SOLDERABLE PLATINUM SILVER, NICKEL BARRIER,
SOLDER PLATE Pb90 Sn10.
- EDGE CLIP:
MATERIAL - PHOSPHOR BRONZE.

METRIC EQUIVALENTS GIVEN IN [mm] ARE FOR REFERENCE INFORMATION ONLY

FIGURE 2



EMC TECHNOLOGY INC
1971 OLD CUTHBERT RD
CHERRY HILL NJ 08034
PHONE NO. (856) 429-7800
FAX NO. (856) 429-1807

UNLESS OTHERWISE SPECIFIED DIMENSIONS ARE IN INCHES TOLERANCES
FRACT ---
ANG ---
XX ±0.01
XXX ±0.005
XXXX ---

THESE DRAWINGS AND SPECIFICATIONS ARE THE PROPERTY OF EMC TECHNOLOGY INC AND SHALL NOT BE DUPLICATED OR USED AS BASIS FOR THE MANUFACTURE OR SALE OF PARTS OR DEVICES WITHOUT PERMISSION.

| | | | | |
|-----------|---------------|----------------|------------|-------------|
| CAGE CODE | SCALE | DRAWN BY | CHECKED BY | APPROVED BY |
| 24602 | 6:1 | CME 01/17/2002 | | DAR 1/22/02 |
| REV | CHANGE NOTICE | DRAWING NO | SHEET | |
| E | EN 02-012 | 1009045000 | 2 OF 2 | |