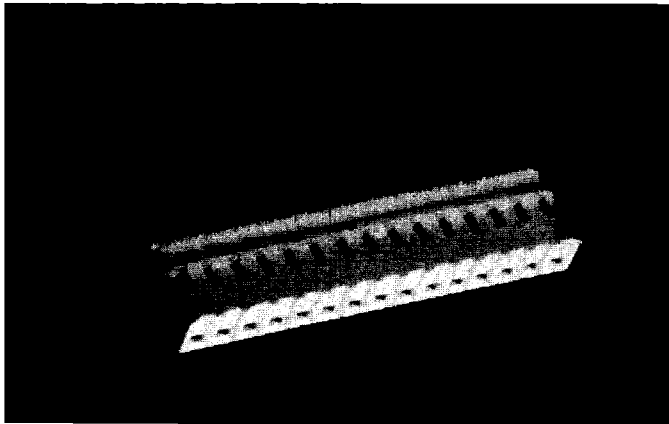


# .156" (3.96mm) IDC Connector



Consult Term-Acon Section C for mating headers

See page 75C for Application Tooling.

## 3360 Series

A reliable economical method providing wire to board termination using discrete wire or ribbon cable. Optimum performance is obtained by the 3 point contact. This high current connector handles up to 18 gauge UL1015 wire with a maximum O.D. of .110". Optional protective cover available.

Maximum wire insulation diameter - .110 (2.79)

Wire sizes - Color coding stripe

#28 AWG - Green

#26 AWG - Blue

#24 AWG - Black

#22 AWG - Red

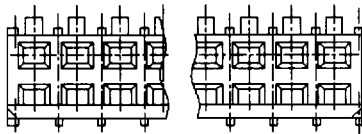
#20 AWG - Brown

#18 AWG - Orange

Insulator Material: Nylon 94V-0

Contacts: Tin/lead plated, copper alloy

Current Rating: 12.5 AMP



### PART NUMBER CODING

**3360-XXX-4XX**

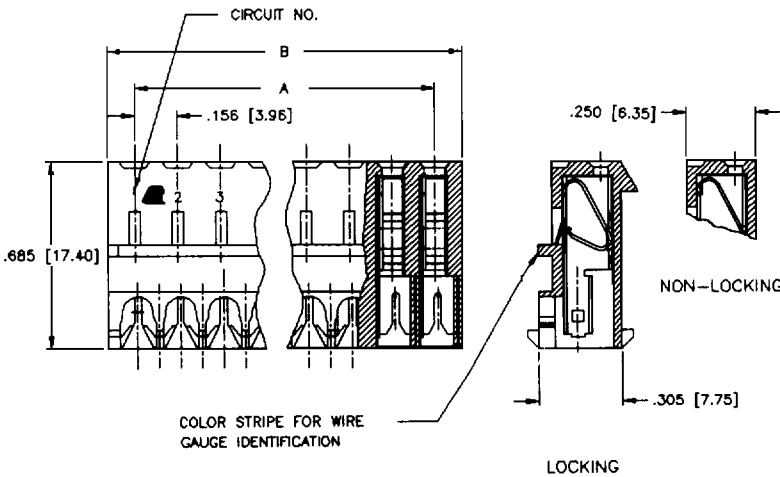
WIRE GAUGE (i.e. 18, 20, 22, 24, 26, 28)

NUMBER OF POSITIONS

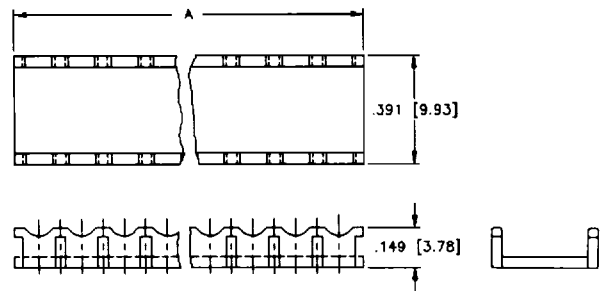
HOUSING STYLE

0 = W/O LOCKING RAMP

1 = W/LOCKING RAMP



### Optional Protective Cover



PART NUMBER	NO. OF POSITIONS	DIM A	"B" ±.010 (±.254)
3360-X02-4XX	2	.156 (3.96)	.356 (9.04)
3360-X03-4XX	3	.312 (7.92)	.512 (13.00)
3360-X04-4XX	4	.468 (11.89)	.668 (16.97)
3360-X05-4XX	5	.624 (15.85)	.824 (20.93)
3360-X06-4XX	6	.780 (19.81)	.980 (24.89)
3360-X07-4XX	7	.936 (23.77)	1.136 (28.85)
3360-X08-4XX	8	1.092 (27.74)	1.292 (32.82)
3360-X09-4XX	9	1.248 (31.70)	1.448 (36.78)
3360-X10-4XX	10	1.404 (35.66)	1.604 (40.74)
3360-X11-4XX	11	1.560 (39.62)	1.760 (44.70)
3360-X12-4XX	12	1.716 (43.59)	1.916 (48.67)
3360-X13-4XX	13	1.872 (47.55)	2.072 (52.63)
3360-X14-4XX	14	2.028 (51.51)	2.228 (56.59)
3360-X15-4XX	15	2.184 (55.47)	2.384 (60.55)

PART NUMBER	DIM A
3300-002-500	.336 (8.53)
3300-003-500	.492 (12.50)
3300-004-500	.648 (16.46)
3300-005-500	.804 (20.42)
3300-006-500	.960 (24.38)
3300-007-500	1.116 (28.36)
3300-008-500	1.272 (32.31)
3300-009-500	1.428 (36.27)
3300-010-500	1.584 (40.23)
3300-011-500	1.740 (44.20)
3300-012-500	1.896 (48.16)
3300-013-500	2.052 (52.12)
3300-014-500	2.208 (56.08)
3300-015-500	2.364 (60.05)