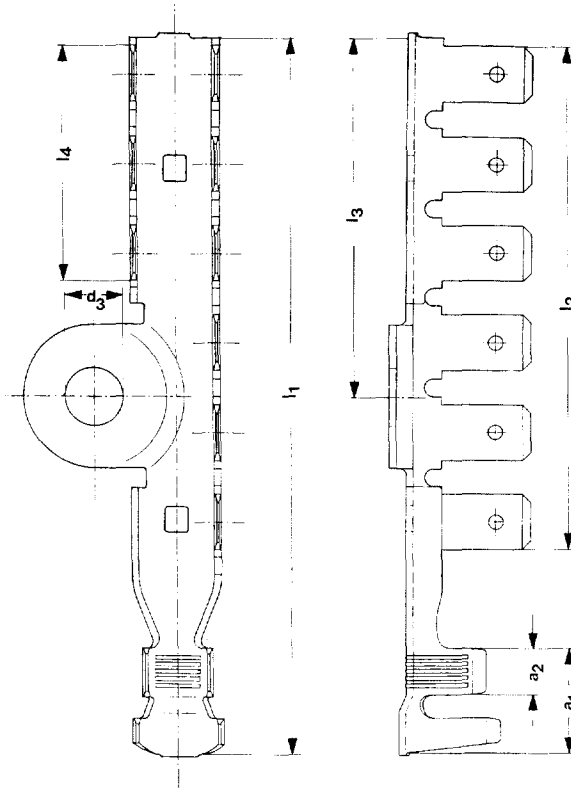


Steckverteiler
mit Steckerbreite 6,3 mm
Maße im Steckbereich
DIN 46244 Teil 1



Multiple tabs
with tab width 6.3 mm
Dimensions in the tab sector
DIN 46244 part 1

Typ 1



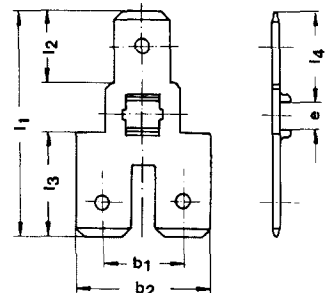
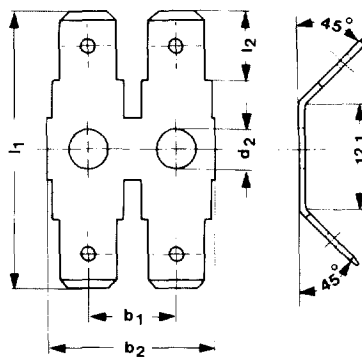
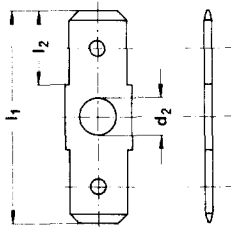
Typ	Nenn- quer- schnitt gmm	Steck- dicke	Steck- breite	a1	a2	b1	d2	L1	L2	Mat- dicke	Form E=Einzel B=Band	Teile-Nr.	Werkstoff	Oberfläche	Verb- vor- schub
1	16	0.80	6.60	12.00	5.50	10.00	6.40	80.00	36.00	0.80	B	25492.201.179	CuSn	frSn 3	
											E	05492.201.011	CuSn	Sn 3	

16210.002

Typ 1

Typ 2

Typ 3



Typ	Steck- dicke	Steck- breite	b1	b2	d2	e	L1	L2	L3	L4	Mat- dicke	Form E=Einzel B=Band	Teile-Nr.	Werkstoff	Oberfläche
1	0.80	6.30			4.00		22.90	8.00			0.80	E	11532.123.003	CuZn	
												E	11532.123.011	CuZn	Sn 3
												E	11532.411.031	Stahl	Ni 3
1	0.80	6.30			4.20		22.90	8.00			0.80	E	11477.123.003	CuZn	
												E	11477.123.011	CuZn	Sn 3
2	0.80	6.30	10.00	16.70	4.60		31.50	8.00			0.80	E	12926.123.003	CuZn	
3	0.80	6.30	9.00	15.30		3.00	25.00	8.00	11.50	10.00	0.80	E	11817.123.003	CuZn	
												E	11817.123.011	CuZn	Sn 3