



# Insulated Terminals Teflon\* Unassembled

\*Teflon is a registered trademark of Dupont

## Bifurcated One Side

Refer to Figure 4484

## Unassembled Teflon

Part No.	Board Thick	Mounting Hole Dia. <sup>+003</sup> / <sub>-001</sub>	X	Y	Z	Swage Tool	DWV
4484A	.031	.126	.060	.134	.312	4484	1900
4484B	.062	.126	.060	.134	.312	4484	1900

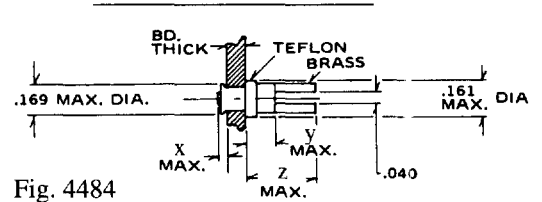


Fig. 4484

Refer to Figure 4443

Part No.	Board Thick	Mounting Hole Dia. <sup>+003</sup> / <sub>-001</sub>	X	Y	Z	Swage Tool	DWV
4443A	.031	.142	.100	.140	.312	4443	2000
4443B	.062	.142	.100	.140	.312	4443	2000
4443C	.094	.142	.100	.140	.312	4443	2000
4443D	.125	.142	.100	.140	.312	4443	2000

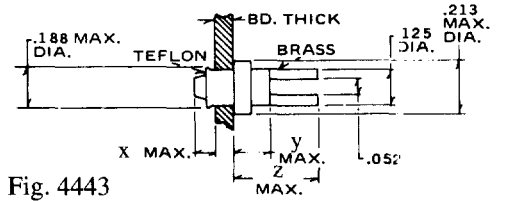


Fig. 4443

Refer to Figure 4473

Part No.	Board Thick	Mounting Hole Dia. <sup>+003</sup> / <sub>-001</sub>	X	Y	Z	Swage Tool	DWV
4473A	.031	.154	.100	.140	.312	4473	2700
4473B	.062	.154	.100	.140	.312	4473	2700
4473C	.094	.154	.100	.140	.312	4473	2700
4473D	.125	.154	.100	.140	.312	4473	2700

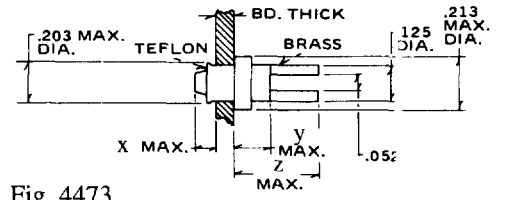


Fig. 4473

## Bifurcated One Side

Refer to Figure 4489

## Round Pin

Part No.	Board Thick	Mounting Hole Dia. <sup>+003</sup> / <sub>-001</sub>	X	Y	Z	Swage Tool	DWV
4489A	.031	.126	.060	.134	.312	4489	1900
4489B	.062	.126	.060	.134	.312	4489	1900

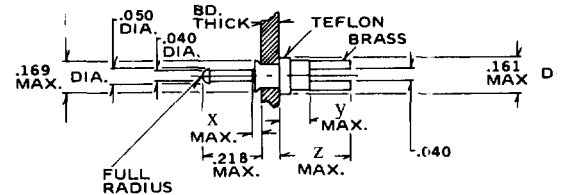


Fig. 4489

Standard Plating Suffix to Part Number

Terminal

-7 (Au over Cu)

See Page 93 for all plating options.

TOLERANCE: .xxx ±.010, .xx ±.016 (ALL DIMS. BEFORE PLATING)

Winchester Electronics

400 Park Road • Watertown, Ct 06795-0500 • Phone: (860)945-5000 • FAX: (860)945-5191 • E-MAIL: useco@litton-wed.com