

Tous droits réservés. Toute réimpression ou communication, sans l'autorisation écrite du propriétaire, est formellement interdite. Toute réimpression sans l'autorisation écrite du propriétaire, est formellement interdite.

BERG
ELECTRONICS

All rights reserved. Reproduction or use in any form without written authority from the proprietor. Copyright BERG ELECTRONICS Inc.

DESCRIPTION : ABOVE PCB, DECK AND PUSH ROD LOCATION ARE AS VIEW BY USER.

| PRODUCT NO. | PUSH ROD LOCATION | | STAND-OFF HEIGHT | Ⓑ MATING RECEPTACLE | P.C.B SIDE | RECOMMENDED P.C.B LAYOUT | MOUNT STYLE TO PCB AND PUSH ROD SIDE |
|---------------|---------------------|----------------------|------------------|---|------------|-----------------------------|--------------------------------------|
| Ⓐ 61532-***** | DECK CLOSEST TO PCB | DECK FARTHEST TO PCB | | | | | |
| 000CA | LEFT | RIGHT | 0.0 | 100 POSITIONS (2x50) 0.8mm RECEPTACLE PART NO. 73277-101000 | ABOVE | SEE DRAWING NO.: TA-1050 | |
| 020CA | LEFT | RIGHT | 2.0 | | | | |
| 022CA | LEFT | RIGHT | 2.2 | | | | |
| 040CA | LEFT | RIGHT | 4.0 | | | | |
| 043CA | LEFT | RIGHT | 4.3 | | | | |
| 050CA | LEFT | RIGHT | 5.0 | | | | |
| 100CA | RIGHT | LEFT | 0.0 | | | | |
| 120CA | RIGHT | LEFT | 2.0 | | | | |
| 122CA | RIGHT | LEFT | 2.2 | | | | |
| 140CA | RIGHT | LEFT | 4.0 | | | | |
| 143CA | RIGHT | LEFT | 4.3 | | | | |
| 150CA | RIGHT | LEFT | 5.0 | | | | |
| 200CA | RIGHT | RIGHT | 0.0 | | | | |
| 220CA | RIGHT | RIGHT | 2.0 | | | | |
| 222CA | RIGHT | RIGHT | 2.2 | | | | |
| 240CA | RIGHT | RIGHT | 4.0 | | | | |
| 243CA | RIGHT | RIGHT | 4.3 | | | | |
| 250CA | RIGHT | RIGHT | 5.0 | | | | |
| 300CA | LEFT | LEFT | 0.0 | | | | |
| 320CA | LEFT | LEFT | 2.0 | | | | |
| 322CA | LEFT | LEFT | 2.2 | | | | |
| 340CA | LEFT | LEFT | 4.0 | | | | |
| 343CA | LEFT | LEFT | 4.3 | | | | |
| 350CA | LEFT | LEFT | 5.0 | | | | |

ORDERING INFORMATION

| NAME | PART NO. | Q'TY |
|----------------------|--------------|------|
| Ⓐ EJECT HEADER ASS'Y | 61532-***** | 1 |
| Ⓑ MATING RECEPTACLE | 73277-101000 | 2 |

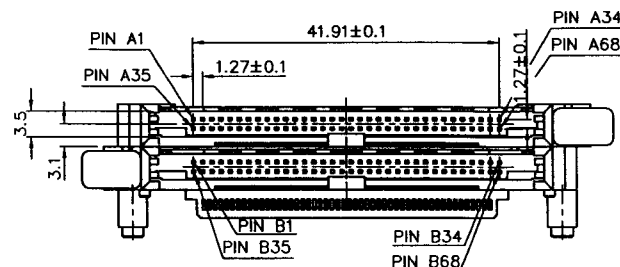
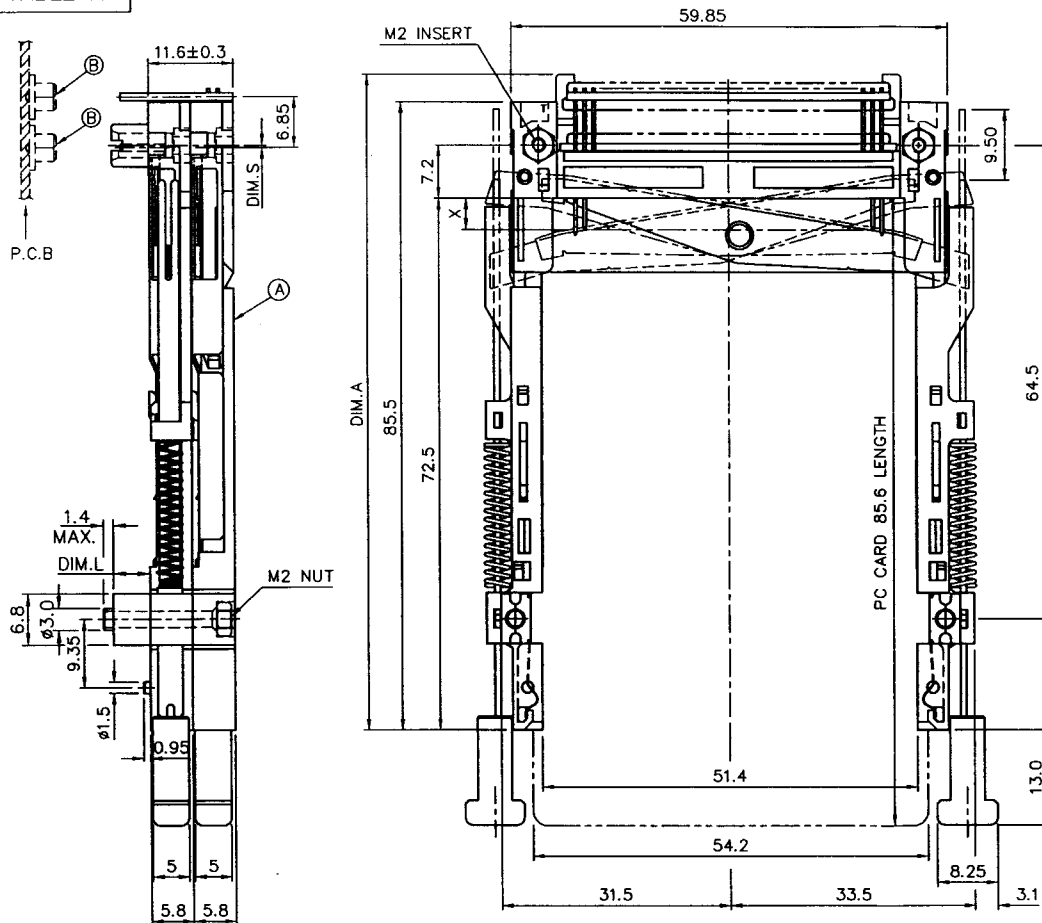
| mat'l code | | | | tolerance unless otherwise specified | | CUSTOMER COPY | | BERG ELECTRONICS | |
|------------|----------|----|----------|--------------------------------------|-----------------------|---------------|----------------|---|--------|
| rev. | ecn no. | dr | date | linear | ± 0.30 | projection | title | CARDBUS UPGRADABLE SPRING BACK, TYPE 1/2/3 | |
| A | T60288 | W | 07/25/96 | angles | ± 2° | unit | product family | | |
| B | T60452 | W | 11/11/96 | | | mm/inch | size | dwg no. | code |
| C | T60488 | W | 12/10/96 | | | scale | A3 | 61532 | TWN |
| D | T70224 | W | 06/11/97 | dr | WENDY CHEN 07/25/96 | 1:1 | | | sheet |
| | | | | enr | JOSEPH HSIAD 07/25/96 | | | | 1 OF 6 |
| | | | | chr | JOSEPH HSIAD 07/25/96 | | | | |
| | | | | appd | JENN TSAO 07/25/96 | | | | |
| sheet | revision | D | D | D | D | D | A | | |
| index | sheet | 1 | 2 | 3 | 4 | 5 | 6 | | |

Tous droits strictement réservés. Reproduction ou communication à des tiers sans autorisation écrite du propriétaire.
 Copyright © BERG ELECTRONICS
 Droits de reproduction BERG ELECTRONICS by

BERG
ELECTRONICS

All rights strictly reserved. Reproduction or issue to third parties in any form without written authority from the proprietor.
 Copyright © BERG ELECTRONICS
 Reproduction by BERG ELECTRONICS

PRODUCT NO.
SEE TABLE A



P/N: 61532-0**CA
(ABOVE P.C.B/LAYOUT SEE TA-1050)

TABLE A

| PRODUCT NO. | STAND-OFF(DIM. L) | DIM. S | DIM. A |
|-------------|-------------------|--------|--------|
| 61532-050CA | 5.0 mm | -0.3 | 89.25 |
| -043CA | 4.3 mm | -0.3 | 89.25 |
| -040CA | 4.0 mm | -0.3 | 89.25 |
| -022CA | 2.2 mm | 1.0 | 90.55 |
| -020CA | 2.0 mm | 1.0 | 90.55 |
| -000CA | NONE | 5.5 | 95.05 |

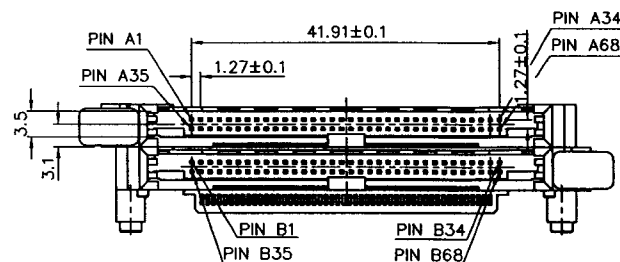
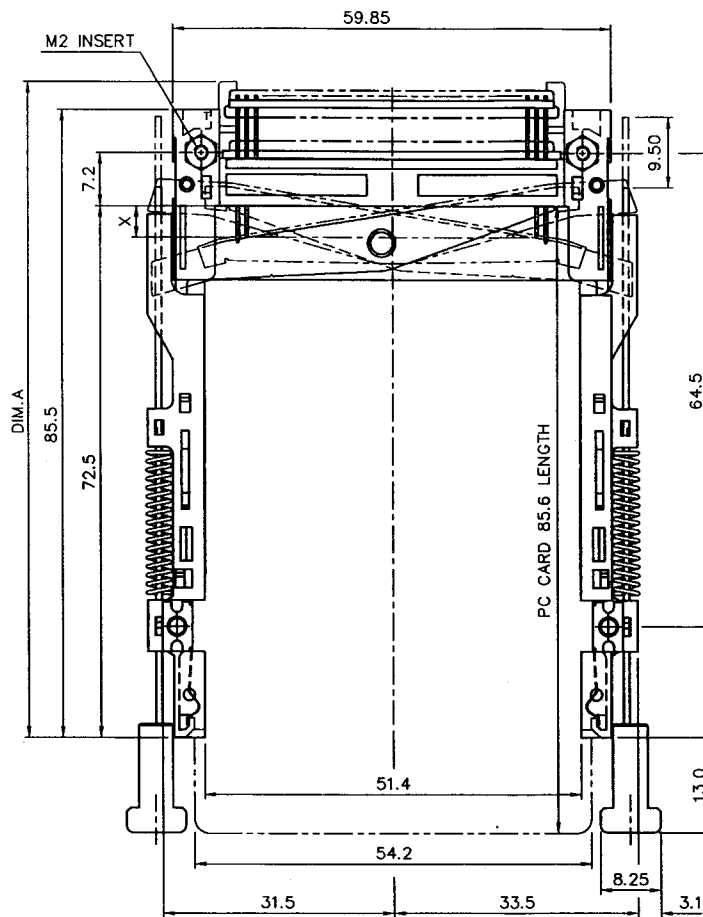
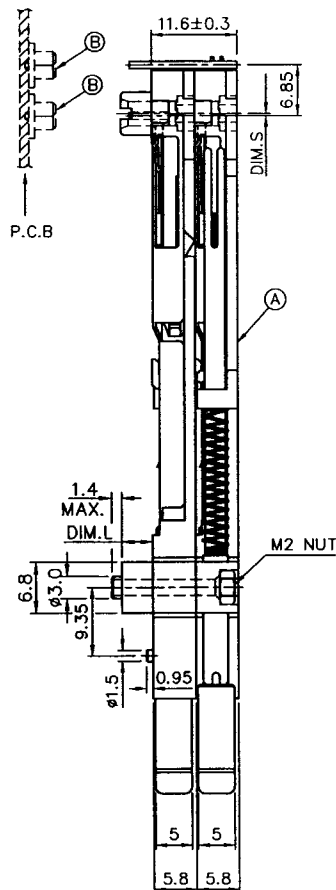
| mat'l code | | | | tolerance unless otherwise specified | | CUSTOMER COPY | | BERG ELECTRONICS | |
|------------|----------|-----|----|--------------------------------------|--------|-----------------------|------------|--|---------|
| rev. | ecn | no. | dr | date | linear | ± 0.30 | projection | title | code |
| D | | | | | angles | ± 2° | projection | CARDBUS UPGRADABLE SPRING BACK, TYPE 1/2/3 | TWN |
| | | | | | dr | WENDY CHEN 07/25/96 | unit | product family | code |
| | | | | | enr | JOSEPH HSIAO 07/25/96 | mm/inch | size | dwg no. |
| | | | | | chr | JOSEPH HSIAO 07/25/96 | scale | A3 | 61532 |
| | | | | | appd | JENN TSAO 07/25/96 | 1:1 | sheet | 2 OF |
| sheet | revision | | | | | | | | |
| index | sheet | | | | | | | | |

Tous droits strictement réservés. Reproduction ou communication à des tiers sans autorisation écrite de BERG ELECTRONICS.

All rights strictly reserved. Reproduction or issue to third parties in any form without written authority from the proprietor.

BERG
ELECTRONICS

PRODUCT NO.
SEE TABLE A



P/N: 61532-1**CA
(ABOVE P.C.B/LAYOUT SEE TA-1050)

TABLE A

| PRODUCT NO. | STAND-OFF(DIM. L) | DIM. S | DIM. A |
|-------------|-------------------|--------|--------|
| 61532-150CA | 5.0 mm | -0.3 | 89.25 |
| -143CA | 4.3 mm | -0.3 | 89.25 |
| -140CA | 4.0 mm | -0.3 | 89.25 |
| -122CA | 2.2 mm | 1.0 | 90.55 |
| -120CA | 2.0 mm | 1.0 | 90.55 |
| -100CA | NONE | 5.5 | 95.05 |

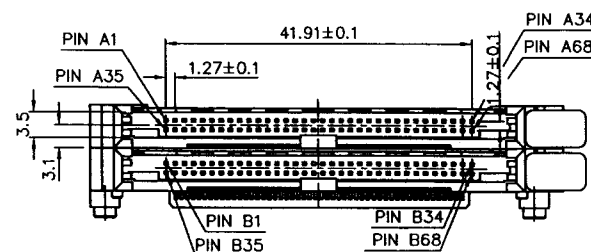
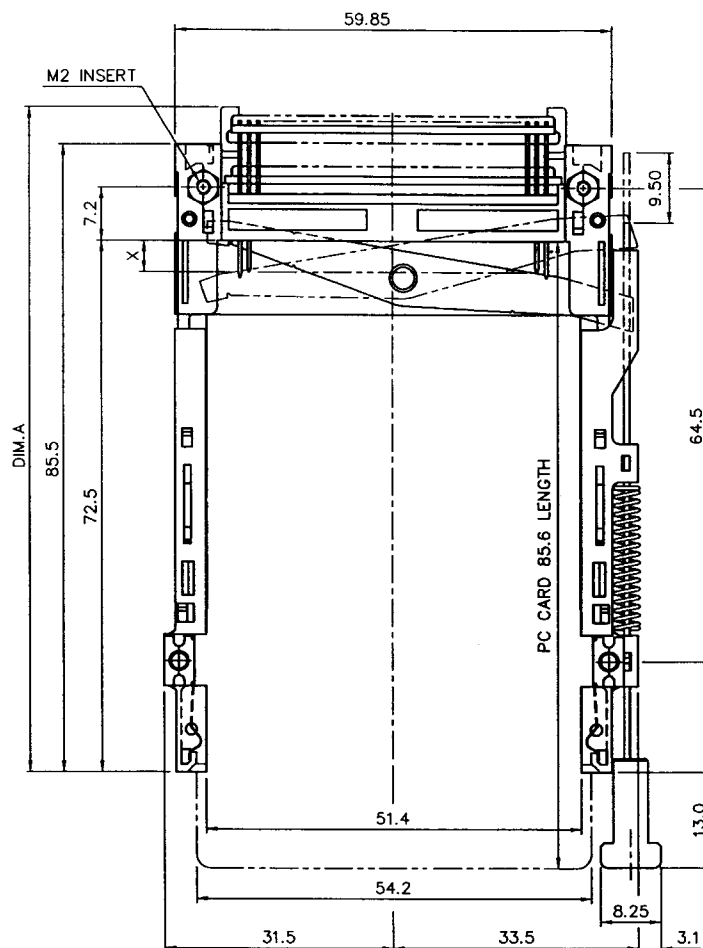
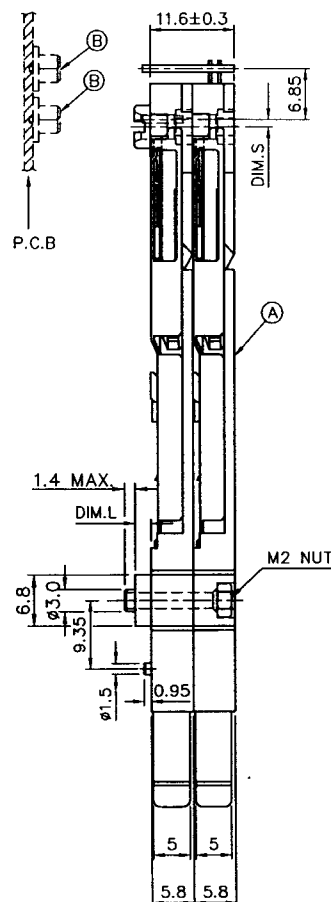
| | | | | | | | | | |
|------------|----------|-----|----|--------------------------------------|--------|---------------|------------|--|-------|
| mat'l code | | | | tolerance unless otherwise specified | | CUSTOMER COPY | | BERG ELECTRONICS | |
| rev. | ecn | no. | dr | date | linear | ± 0.30 | projection | title CARDBUS UPGRADABLE SPRING BACK, TYPE 1/2/3 | |
| D | | | | | angles | ± 2° | unit | product family | code |
| | | | | | | | mm/inch | size | TWN |
| | | | | | | | scale | dwg no. | sheet |
| | | | | | | | 1:1 | 61532 | 3 OF |
| sheet | revision | | | | | | | | |
| index | sheet | | | | | | | | |

Tous droits strictement réservés. Reproduction ou communication à des tiers int
 propriété de e BERG ELECTRONICS.
 Droits de reproduction BERG ELECTRONICS by

BERG
 ELECTRONICS

All rights strictly reserved. Reproduction or leave to third parties in any for
 whatever is not permitted without written authority from the proprietor.
 Copyright BERG ELECTRONICS IN

PRODUCT NO.
 SEE TABLE A



P/N : 61532-2**CA
 (ABOVE P.C.B/LAYOUT SEE TA-1050)

TABLE A

| PRODUCT NO. | STAND-OFF(DIM. L) | DIM. S | DIM. A |
|-------------|-------------------|--------|--------|
| 61532-250CA | 5.0 mm | -0.3 | 89.25 |
| -243CA | 4.3 mm | -0.3 | 89.25 |
| -240CA | 4.0 mm | -0.3 | 89.25 |
| -222CA | 2.2 mm | 1.0 | 90.55 |
| -220CA | 2.0 mm | 1.0 | 90.55 |
| -200CA | NONE | 5.5 | 95.05 |

| | | | | | | | | | |
|------------|----------|-----|----|--------------------------------------|--------|----------------------|------------|--------------------------|--|
| mat'l code | | | | tolerance unless otherwise specified | | CUSTOMER COPY | | BERG ELECTRONICS | |
| rev. | ecn | no. | dr | date | linear | ± 0.30 | projection | title CARDBUS UPGRADABLE | |
| D | | | | | angles | ± 2° | unit | SPRING BACK, TYPE 1/2/3 | |
| | | | | | dr | MENDY CHEN 07/25/96 | mm/inch | product family | |
| | | | | | enqr | JOSEPH HSIA 07/25/96 | scale | size dwg no. | |
| | | | | | chr | JOSEPH HSIA 07/25/96 | 1:1 | A3 61532 | |
| | | | | | appd | JENN TSAO 07/25/96 | | code TWN | |
| sheet | revision | | | | | | | sheet 4 OF | |
| index | sheet | | | | | | | | |

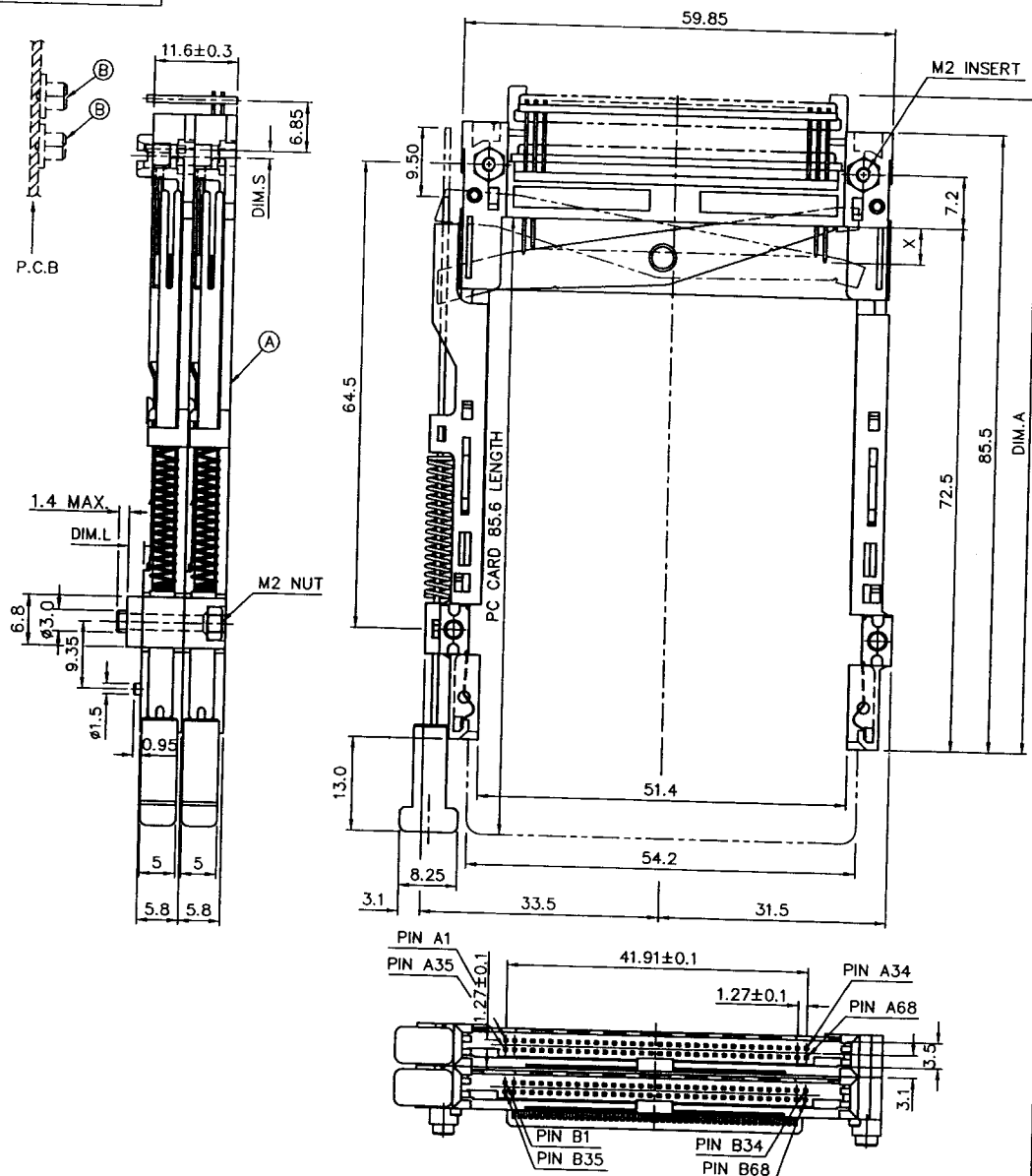
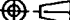


TABLE A

| PRODUCT NO. | STAND-OFF(DIM. L) | DIM. S | DIM. A |
|-------------|-------------------|--------|--------|
| 61532-350CA | 5.0 mm | -0.3 | 89.25 |
| -343CA | 4.3 mm | -0.3 | 89.25 |
| -340CA | 4.0 mm | -0.3 | 89.25 |
| -322CA | 2.2 mm | 1.0 | 90.55 |
| -320CA | 2.0 mm | 1.0 | 90.55 |
| -300CA | NONE | 5.5 | 95.05 |

| | | | | | | | | | |
|-------------|----------------|-----|----|------|---|----------|---|--|------------|
| mat'l code | | | | | tolerance unless otherwise specified | | CUSTOMER COPY | BERG ELECTRONICS | |
| rev. | ecn | no. | dr | date | linear | ± 0.30 | projection  | title CARDBUS UPGRADABLE SPRING BACK, TYPE 1/2/3 | |
| D | | | | | | ± .2" | | | |
| | | | | | | | | | |
| | | | | | | | | | |
| | | | | | | | | | |
| | | | | | | | | | |
| | | | | | dr WENDY CHEN | 07/25/96 | unit | product family | |
| | | | | | engr JOSEPH HSIAO | 07/25/96 | mm/inch | size | |
| | | | | | chr JOSEPH HSIAO | 07/25/96 | scale | dwg no. | |
| | | | | | appd JENN TSAO | 07/25/96 | 1:1 | A3 | 61532 |
| sheet index | revision sheet | | | | | | | | code TWN |
| | | | | | | | | | sheet 5 OF |

PART NUMBER DESCRIPTION :

61532-□□□□

BUTTON COLOR
A : BLACK

C : 13.0 mm

STAND-OFF

00 : 0.0 mm
20 : 2.0 mm
22 : 2.2 mm
40 : 4.0 mm
43 : 4.3 mm
50 : 5.0 mm

PUSH ROD

TOP MOUNT

0 : RIGHT-LEFT
1 : LEFT-RIGHT
2 : RIGHT-RIGHT
3 : LEFT-LEFT

NOTES:

- 8.0mm MIN CARD EJECT.
- EJECT TRAVEL: 9.50mm
- MATERIAL:
 - 3.1 EJECT HEADER ASS'Y
PLASTIC HOUSING: LCP UL94V-0 BLACK
PIN: PHOSPHOR BRONZE
PCB: FR4
PLASTIC GUIDE: POLYPHTHARAMID UL94V-0 BLACK
PLATE: STAINLESS
EMI CONTACT: PHOSPHOR BRONZE
 - 3.2 RECEPTACLE
PLASTIC: LCP 94V-0 NATURAL
PIN: BeCu
- FINISH (PIN)
UNDER PLATING: 0.5um MIN Ni
CONTACT AREA: 0.1um MIN GOLD OVER
0.5um MIN Pd-Ni
SOLDER TAIL: 2.5umMIN Sn-Pb
- PUSH ROD LOCATION AND P.C.B. ARE AS APPEARS INSTALLED
- DIM "X"

| | | |
|----------|---------|------------------|
| 4.25±0.1 | 3.5±0.1 | 5.0±0.1 |
| OTHERS | 36,67 | 1,17,34,35,51,68 |
- DO NOT TOUCH AND KEEP CLEAN THE SURFACES OF PCB OF HEADER ASS'Y.
- P.C.B LAYOUT AND PIN ASSIGNMENT REFERED TO PART NUMBER TA-1050.

| mot'l code | | | | tolerance unless otherwise specified | | CUSTOMER COPY | BERG ELECTRONICS | |
|------------|----------|----|------|---|----------------------|------------------|--------------------------------------|--|
| rev. | ecn no. | dr | date | linear | ±0.30 | projection | title | |
| A | | | | angles | ± 2° | | CARDBUS EJ HEADER SMT, TYPE 1/2/3 | |
| | | | | dr | WENDY CHEN 07/25/96 | unit | product family | |
| | | | | enqr | JOSEPH HSIA 07/25/96 | mm/inch | code | |
| | | | | chr | JOSEPH HSIA 07/25/96 | scale | size | |
| | | | | oppd | JENN TSAO 07/25/96 | 1:1 | A3 | |
| sheet | revision | | | | | | 61532 | |
| index | sheet | | | | | | 6 OF | |
| | | | | | | | TWN | |