

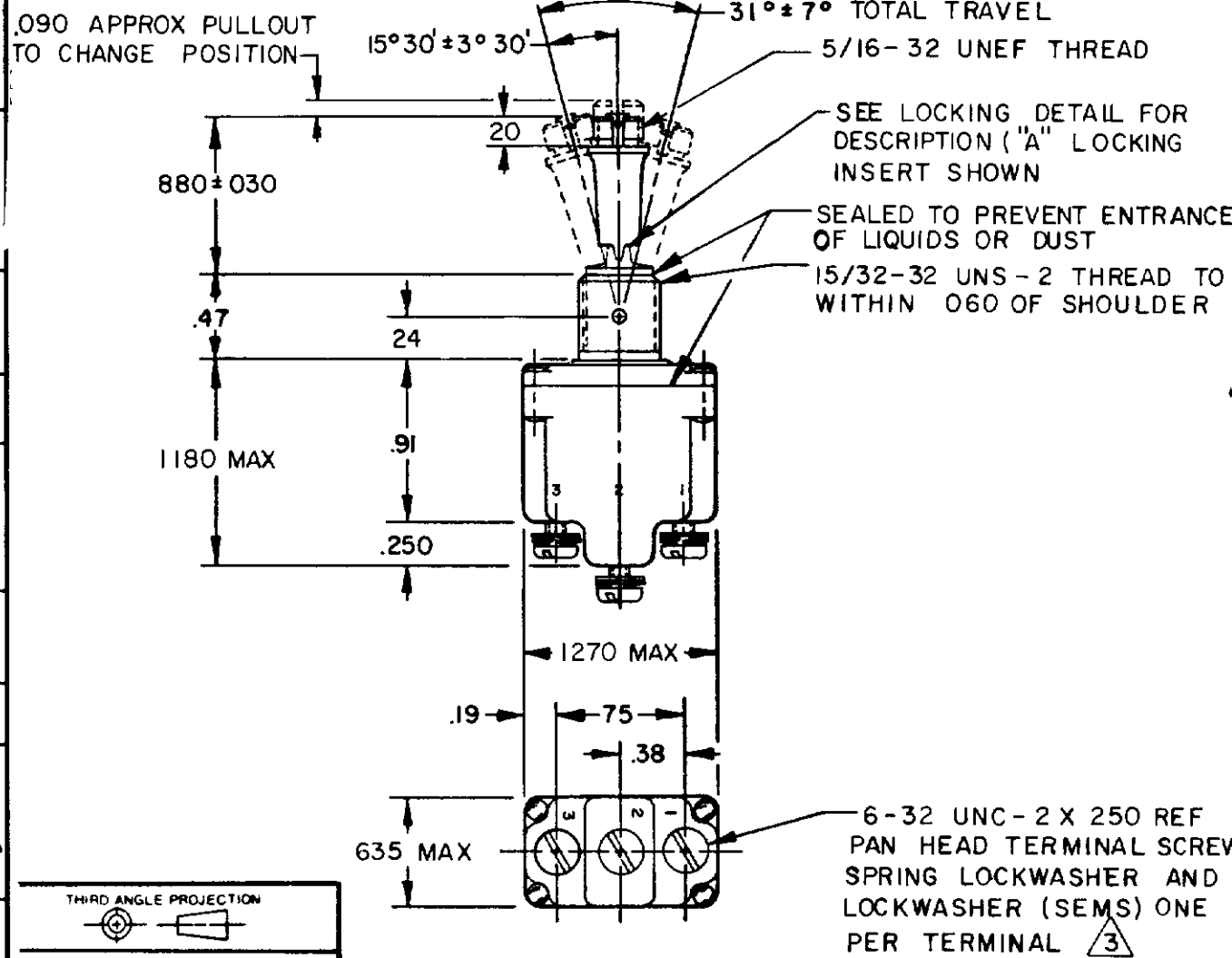
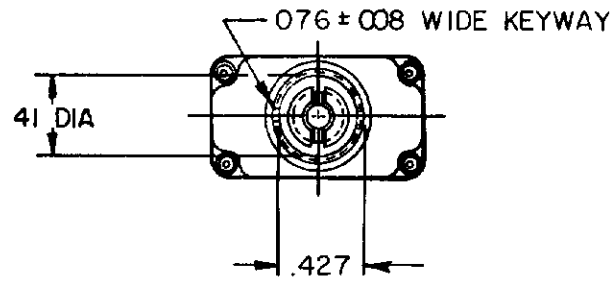
MICRO SWITCH

FREEPORT ILLINOIS U S A
A DIVISION OF HONEYWELL
FED. MFG. CODE 91929

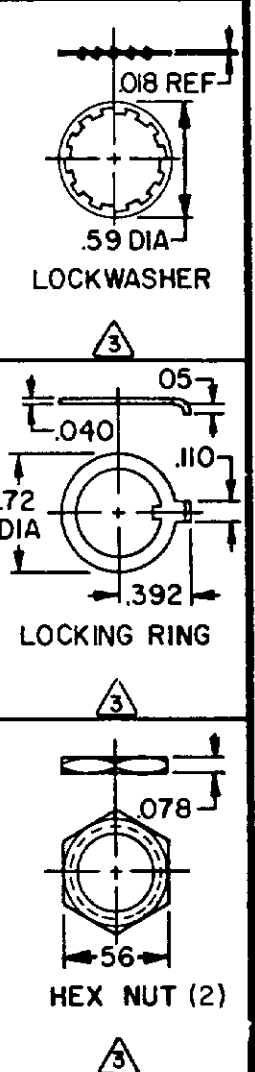
SWITCH-TOGGLE

CATALOG LISTING 1TL141 SERIES CHART 1

THIS DRAWING COVERS A PROPRIETARY ITEM AND IS THE PROPERTY OF MICRO SWITCH. A DIVISION OF HONEYWELL. THIS DRAWING IS NOT TO BE COPIED OR USED WITHOUT THE APPROVAL OF MICRO SWITCH.



CIRCUIT MADE WITH TOGGLE LEVER IN	CURRENT CAPACITY (AMPS)	
	RESISTIVE LOAD DC VOLTS	LAMP LOAD 28 VDC
"A" LOCKED IN THREE POSITIONS	20	75
"B" LOCKED IN CENTER AND EXTREME POSITION (KEYWAY SIDE)	5	15
"D" LOCKED OUT OF CENTER POSITION	6	5
"E" LOCKED IN CENTER POSITION	3	15
"F" LOCKED IN EXTREME POSITION (OPPOSITE KEYWAY)	10	7
"G" LOCKED IN EXTREME POSITION (KEYWAY SIDE)	15	75
"H" LOCKED OUT OF CENTER AND EXTREME POSITION (KEYWAY SIDE)	5	15
"J" LOCKED OUT OF CENTER AND EXTREME POSITION (OPPOSITE KEYWAY)	6	4
"K" LOCKED IN CENTER AND EXTREME POSITION (OPPOSITE KEYWAY)	2	10
"L" LOCKED OUT OF EXTREME POSITION (KEYWAY SIDE)	7	15
"M" LOCKED OUT OF AND INTO EXTREME POSITION (OPPOSITE KEYWAY)	15	75
"N" LOCKED OUT OF EXTREME POSITION (OPPOSITE KEYWAY)	5	15
"P" LOCKED OUT OF AND INTO EXTREME POSITION (KEYWAY SIDE)	6	4



- NOTES:
- SWITCHES ARE CAPABLE OF WITHSTANDING A TEMPERATURE OF 160°F CONTINUOUSLY AT FULL RATED LOAD
 - CIRCUIT DESIGNATION AND MICRO SWITCH CATALOG LISTING MARKED ON SIDE OF SWITCH
 - FURNISHED UNASSEMBLED
 - FOR TERMINAL COVER, SEE MICRO SWITCH CATALOG LISTING 5PA7
 - KEYWAY SHOWN ON LEFT SIDE
 - SUFFIX LETTER MUST BE ADDED FOR DESIRED TYPE OF TOGGLE LOCKING. SEE CHART FOR AVAILABLE LOCKING COMBINATIONS
 - APPLIES ONLY TO "ON" AND "MOMENTARY ON" POSITIONS

CATALOG LISTING
1TL141 SERIES CHART 1
PAGE 1 OF 1
RELEASE NO CO-78465 REPLACES 1TL141 SERIES
M
ISSUE 11
CHECK
REVISIONS
A OBS CO34888
GLH 21 APR 75
B RE-IN CO78465
MAM 10 JUN 94
CHECK
KAG 28 JUN 94
CHECK
MAM 10 JUN 94
DRAWN

THIRD ANGLE PROJECTION

SCALE FULL

DO NOT SCALE PRINT

TOLERANCES
APPLY TO DIMEN UNLS. CONVERSIONS ARE ONLY FOR REFERENCE. UNLESS NOTED, TOLERANCES ARE ±

DIM	TOL	DIM	TOL
ONE PLACE	± .1	XX	± 0.010
TWO PLACES	± .05	XXX	± 0.0010
THREE PLACES	± .005	XXXX	± 0.0005

DESIGN UNITS
METRIC
US CUSTOMARY

RAW MATERIAL-COMMERCIAL STANDARD
MICRO SWITCH STANDARDS APPLY

DIMENSIONS ARE TO BE MET BEFORE
PROTECTIVE COATINGS ARE APPLIED

WEIGHT 08 LBS APPROX