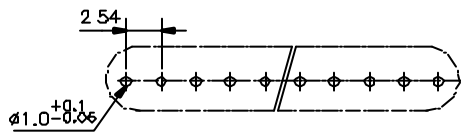
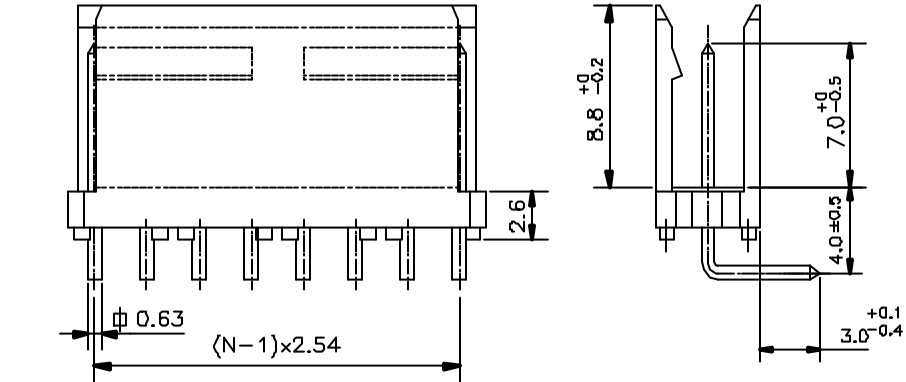
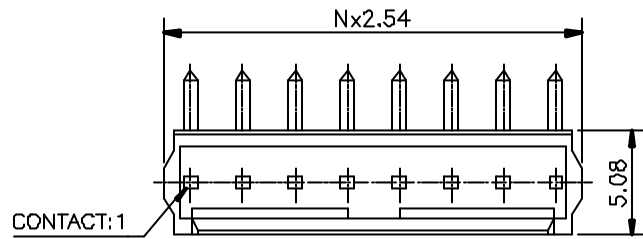
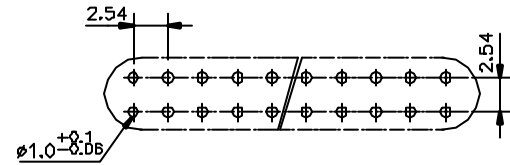
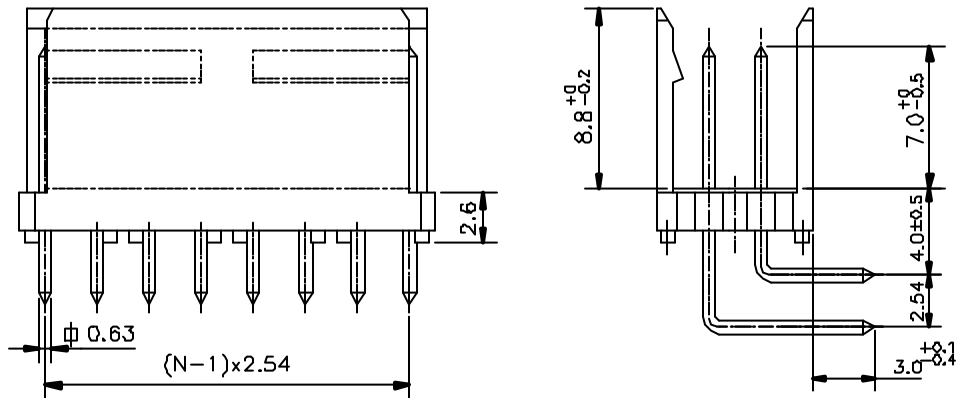
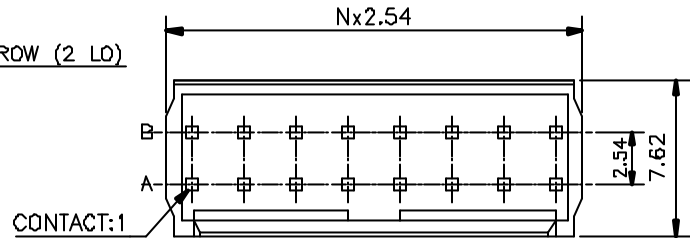


SINGLE ROW (1 LO)



PCB DRILLING DETAILS

DOUBLE ROW (2 LO)



PCB DRILLING DETAILS

ORDERING INFORMATION

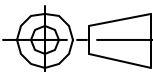
8614 SERIES	8614 - 10 - XX - X - XX - X	PLATING
20- SHROUDED MALE		1 - TIN LEAD
NO OF CONTACTS		2 - 0.2 μAu
2 TO 25, 4 TO 50		3 - 0.75 μAu SELECTIVE
NO. OF ROWS		4 - 0.2 μAu SELECTIVE
1 - SINGLE ROW		5 - 1.27 μAu SELECTIVE
2 - DUAL ROW		6 - 0.75 μAu
LO - RIGHT ANGLE SOLDER		7 - GOLD FLASH
		8 - 1.27 μAu SELECTIVE
		9 - 0.4 μ FULL GOLD
		10 - FULL GOLD FLASH

TECHNICAL SPECIFICATION

INSULATOR MATERIAL	: SELF EXTINGUISHING THERMOPLASTIC (UL94 V0)
CONTACT MATERIAL	: COPPER ALLOY
MAXIMUM VOLTAGE	: 1000 V rms.
NOMINAL CURRENT	: 3A AT 20°C
INSULATION RESISTANCE	: > 5000 MΩ
CONTACT RESISTANCE	: ≤ 20 mΩ
CLIMATIC CATAGORY	: -55°C TO +125°C / 21 DAYS EXPOSURE TO- INDUSTRIAL ENVIRONMENT HUMIDITY TEST AS HE-14.

ALL DIMENSIONS ARE IN MM
DO NOT SCALE DRAWING
GEN TOLERANCE
LINEAR ±0.1
ANGULAR ±1°

SCALE



TITLE
SHROUDED MALE CONNECTOR
(RIGHT ANGLE SOLDER)

MATERIAL

SEE TECHNICAL SPEC.

8614

REF.

DRN Mini.K.V

CHD Jai.K.A

APPD P.S.Johns

DATE 6/12/98

DRG NO: C/8614/0082

SHEET 1 OF 1

Q	6/12/98	First issue		
INDEX	DATE	REVISION DESCRIPTION	CHD BY	APPD