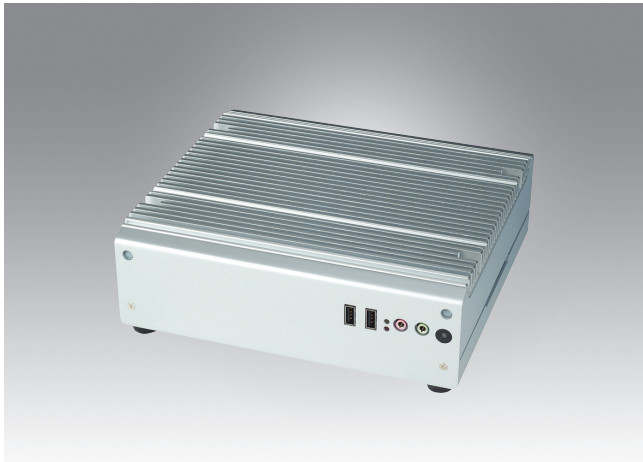


# ARK-3202V

## Mobile Intel® Atom™ N270 Fanless Solution with Dual Display and Multiple I/O



### Features

- Intel® Atom™ N270 Processor at 1.6 GHz
- Dual display and support for wide screen with high resolution
- Supports 2 GbE, 5 x USB 2.0 ports and 5 COM ports
- Optional WLAN and HSDPA modules for advanced in-vehicle solutions
- In-vehicle power design and IGN support, compliant with ISO-7637-2
- GPS on-board for in-vehicle applications
- Works with both 12 and 24-volt systems
- IP40 rating

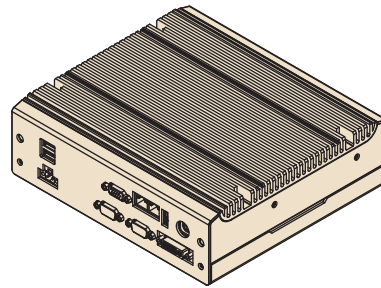
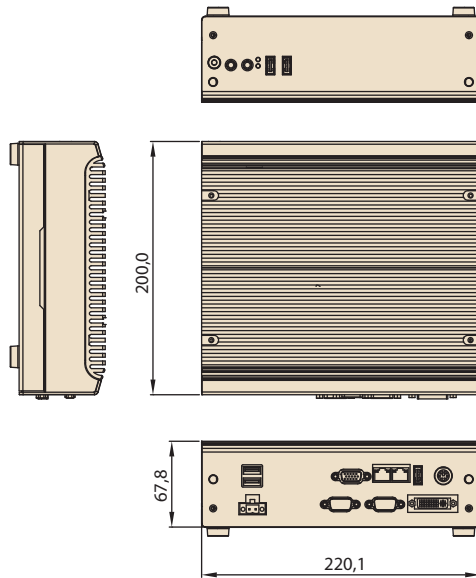


### Specifications

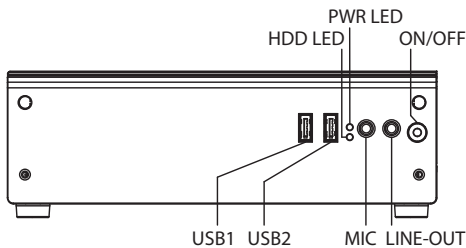
|                   |                                    | ARK-3202V-S6A1E   |
|-------------------|------------------------------------|---|
| Processor System  | CPU                                | Intel Atom N270   |
|                   | Max. speed                         | 1.6 GHz   |
|                   | System Chipset                     | Intel 945GSE + ICH7-M Chipset   |
|                   | Front Side Bus                     | 400/533MHz  |
|                   | BIOS                               | Award 4 MB SPI BIOS   |
| Memory            | Technology                         | DDR2 400/533 MHz (945GSE)   |
|                   | Max. Capacity                      | 2 GB  |
|                   | Socket                             | 1 x 200-pin SODIMM  |
| Graphics          | Chipset                            | Integrated graphics built in Intel 945GSE   |
|                   | Interface                          | CRT Interface<br>DVI (Optional)<br>36-bit LVDS interface(Optional)  |
| Ethernet          | LAN 1                              | 10/100/1000 Mbps Ethernet controller, support Wake On LAN   |
|                   | LAN 2                              | 10/100/1000 Mbps Ethernet controller, support Wake On LAN   |
| Audio             | Amplifier                          | 2.2W amplifier  |
|                   | Interface                          | Spkr-out, Mic-in  |
| IO interface      | Serial Interface                   | 2 x RS-232 & 3 x RS-232/422/485 w/ Auto Flow Control  |
|                   | USB Interface                      | 5 x USB ports, Compliant with USB 2.0   |
| Other             | GPS                                | GPS onboard   |
|                   | Watchdog timer                     | 255-level timer interval, setup by software   |
| Expansion         | Mini PCIe                          | 2 x Mini PCIe (with one SIM socket)   |
| Storage           | SSD                                | Supports CompactFlash socket for type I/II CompactFlash disk  |
| Software Support  | Microsoft Windows                  | XP Professional, XP Embedded  |
|                   | Linux                              | Fedora 9.0  |
| Power Requirement | Power Type                         | AT/ATX  |
|                   | Power Input Voltage                | 9 V <sub>DC</sub> ~ 32 V <sub>DC</sub> (for In Vehicle)   |
|                   | Minimum Power Input                | 9V-32V, 7.2A-2.0A   |
|                   | Power Adapter                      | AC to DC, DC19 V/3.42 A, 65 W (Optional)  |
| Power Consumption | Typical                            | Typical 13.3W (CPU is Intel Atom N270 1.6 GHz and w/o expansion)  |
|                   | Max.                               | Max. 17.1W (CPU is Intel Atom N270 1.6 GHz and w/o expansion)   |
| Mechanical        | Construction                       | Aluminum housing  |
|                   | Mounting                           | Desk/wall-mounting  |
|                   | Dimensions (W x H x D)             | 220 mm x 68 mm x 200 mm (8.66" x 2.67" x 7.87")   |
|                   | Weight                             | 3 kg (6.6 lb)   |
| Environment       | Operating Temperature              | With Industrial Grade CompactFlash disk: -20 ~ 60° C (-4 ~ 140° F)  |
|                   | Storage Temperature                | -40 ~ 85° C (-40 ~ 185° F)  |
|                   | Relative Humidity                  | 95% @ 40° C (non-condensing)  |
|                   | Vibration Loading During Operation | With CompactFlash disk: 5 Grms, IEC 60068-2-64, random, 5 ~ 500 Hz, 1 Oct./min, 1 hr/axis. MIL-810 STD 514.5C-3 |
|                   | Shock During Operation             | With CompactFlash disk: 50 G, IEC 60068-2-27, half sine, 11 ms duration   |
|                   | EMC                                | CE/FCC Class A, CCC, BSMI   |
|                   | Safety Certifications              | UL, CCC, BSMI   |
|                   | In-Vehicle Certification           | E-Mark E13, ISO-7637-2  |

## Dimensions

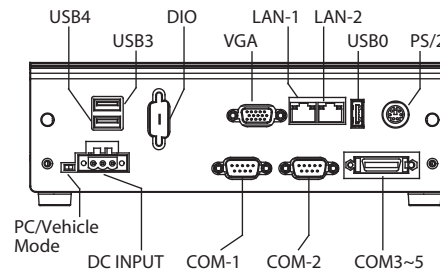
Unit: mm (inch)



### Front Panel External I/O Mechanical Layout/Drawing



### Rear Panel External I/O Mechanical Layout/Drawing



## Packing List

| Part Number    | Description   |
|----------------|---|
| -              | 1 x ARK-3202V Unit                                  |
| -              | 1 x Driver/Utility CD/Manual                        |
| -              | 1 x User Manual (Simplified Chinese)                |
| 1960014487T00C | 2 x Desk/Wall mount plate                           |
| 1700018432     | 1 x 2-pin Phoenix DC power connector                |
| 1700018308     | M Cable SCSI 26P(M)/D-SUB 9P(M)X3 COM, 10CM         |
| 1750001782     | 1 x Antenna GPS Active 5v 38 x 40 with 5M SMA cable |

## Ordering Information

| Part Number     | Description  |
|-----------------|--|
| ARK-3202V-S6A1E | Intel Atom N270 1.6 GHz Compact Embedded Box IPC, w/ 2 x GbE, 5 x USB 2.0, 5 x COM, 2 x Mini PCIe, GPS, VGA, Audio |

## Optional Items

| Part Number  | Description  |
|--------------|--|
| 1757003659   | AC-to-DC Adapter, DC19 V/3.42A 65W, with Phoenix Power Plug, 0 ~ 40° C for Home and Office Use |
| 1757002682   | AC-toDC adaptor DC19V/3.42A 65W, 0-40C, for Japan with PSE                                     |
| 1700001947   | Power cable 2-pin 180 cm, USA for ARK-338X   |
| 1700001948   | Power cable 2-pin 180 cm, Europe for ARK-338X  |
| 1700001949   | Power cable 2-pin 180 cm, UK for ARK-338X  |
| 1700008921   | Power cable 3-pin 180cm, Japan for 1757002682  |
| 1652004519   | 3pin terminal block for ARK-3202V DC input, use with 1757002682                                |
| 1700009398   | LVDS power cable for ARK-3202  |
| AM0-HSDPA01E | 3.5G HSPPA Module  |

## Embedded OS

| Part Number | Description              |
|-------------|--------------------------|
| 2070009503  | WES 2009 ENG/FR/GE/IT/SP |
| 2070009504  | WES2009 ENG/CHT/CHS/JPN  |
| 2070010050  | Win CE 6.0 Pro           |