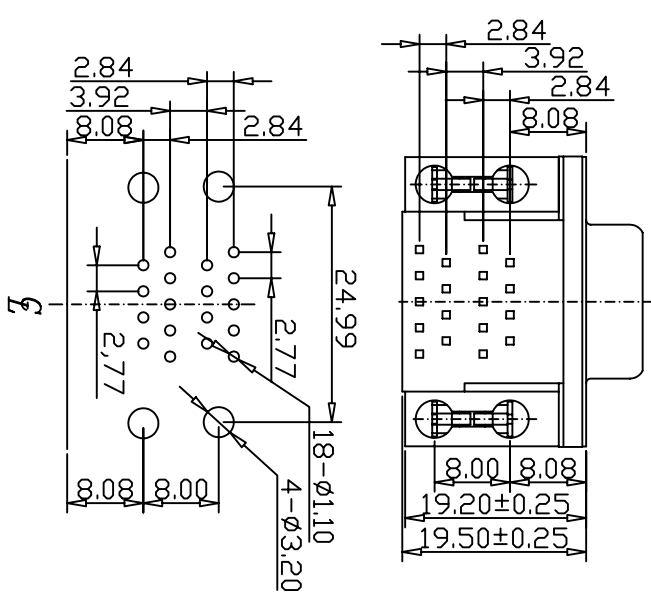
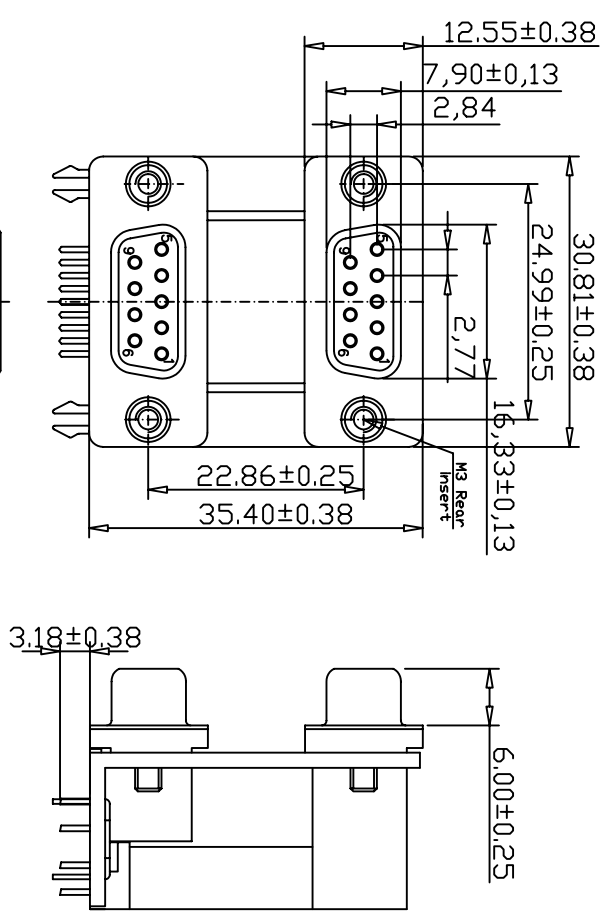


This document is the property of Amphenol Corporation and is intended for use only in the specific application for which it was prepared. It is not to be distributed, reproduced or used, in whole or in part, without the prior consent of Amphenol Corporation. All rights are reserved. No part of this document is to be used for any other purpose without the prior consent of Amphenol Corporation.



RECOMMENDED P.C.B LAYOUT
(Tolerance +/-0.03)

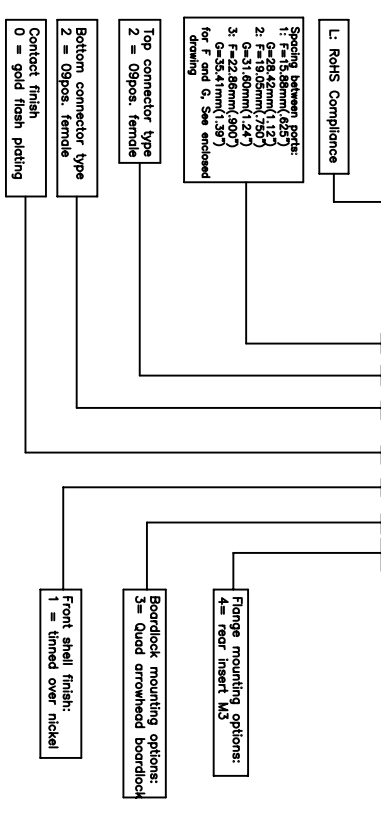
REVISONS		DATE	APPROVED
SMI	EDN	DESCRIPTION	
A		28/02/07	Michael

D-SUB TECHNICAL DATA

SHELL : Steel, 50u" min nickel
 BODY : Glass filled thermoplastic, high temperature.
 Flame retardant to UL94 V-0 Color Black
 CONTACTS : Brass
 gold flash over 50u" min nickel on mating area.
 100u" min tin over 50u" min nickel on solder area
 BOARDLOCK : Brass. 100u" min tin over 50u" min nickel
 SCREWLOCK : Brass. 100u" min nickel
 BRACKET : Brass. 100u" min. tin over 50u" min nickel
 ELECTRICAL : Voltage rating :250 V Rms to 60 Hz
 Current rating :3A
 Withstanding Voltage >1000 V Rms to 50 Hz for one minute
 Insulation resistance >5000 M Ohms
 Contact resistance 20 mohms max.
 CLIMATIC : Temperature range -55 °C up to 105°C
 MECHANICAL : Insertion force per contact<3.41N Max
 Extraction force per contact 0.21N Min..
 MARKING : Amphenol...(Series No.)
 Commercial reference
 Manufacturing date

PRODUCT CODE

L 17H 322 0134



UNLESS OTHERWISE SPECIFIED	APPROVAL	DATE
TOLERANCES	DRAWN	DATE
U.S.	CHECKED	BY/PAW/DT
METRIC	BY/PAW/DT	
-.X	+/-.	
-.XX	+/-.	
-.XXX	+/-.	
ANGLES	+/-.	
ANGLES	+/-.	
2		

FOR MATERIALS AND FINISHES	ANGLE OF PROJECTION	SIZE	DRAWING NO.	REV.
REMOVE SHARP EDGES		A4	C	A
THIRD ANGLE		SCALE	NONE	SHEET 1 OF 1
AMPHENOL				

Amphenol

D-SUB contacts, Dual port
L17H Series