

RS2596

150KHz, 3A PWM Buck DC/DC Converter

General Description

The RS2596 is Monolithic IC that design for a step-down DC/DC Converter, and own the ability of driving a 3A load without additional transistor component.

The output version included 3.3V, 5V, 12V and an adjustable type. It operates at a switching frequency of 150KHz thus allowing smaller sized filter components than what would be needed with lower frequency switching regulators. Other features include a guaranteed $\pm 4\%$ tolerance on output voltage under specified input voltage and output load conditions, and $\pm 15\%$ on the oscillator frequency. Regarding protected function, thermal shutdown is to prevent over temperature operating from damage, and current limit is against over current operating of the output switch.

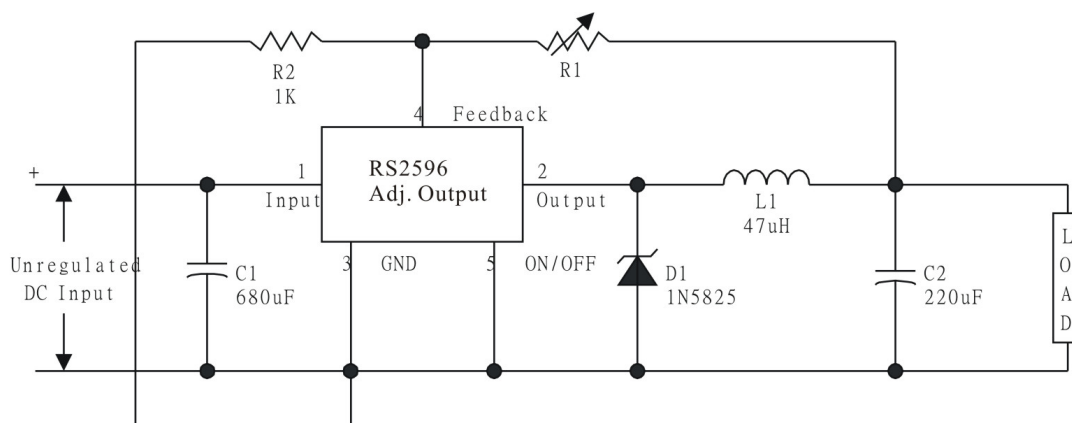
Features

- 3.3V, 5V, 12V and adjustable
- Adjustable version output voltage range: 1.23-37V
- $\pm 4\%$ max over line and load conditions
- 150KHz $\pm 15\%$ fixed switching frequency
- TTL shutdown capability
- Operating voltage can be up to 40V
- Output load current: 3A
- TO220-5 and TO263-5 packages
- Low power standby mode
- Thermal-shunt down and current-limit protection
- Built-in switching a transistor on chip, requires only 4 external components

Applications

- Simple High-efficiency step-down regulator
- Positive to negative converter
- On-card switching regulators

Application Circuits



Adjustable Output Voltage Versions

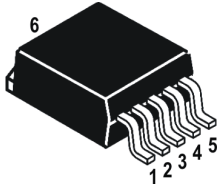


This integrated circuit can be damaged by ESD. Orister Corporation recommends that all integrated circuits be handled with appropriate precautions. Failure to observe proper handling and installation procedures can cause damage.

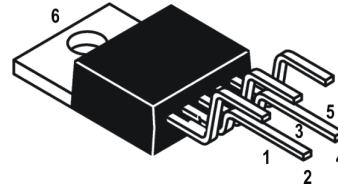
ESD damage can range from subtle performance degradation to complete device failure. Precision integrated circuits may be more susceptible to damage because very small parametric changes could cause the device not to meet its published specifications.

Pin Assignments

TO-263-5



TO-220-5



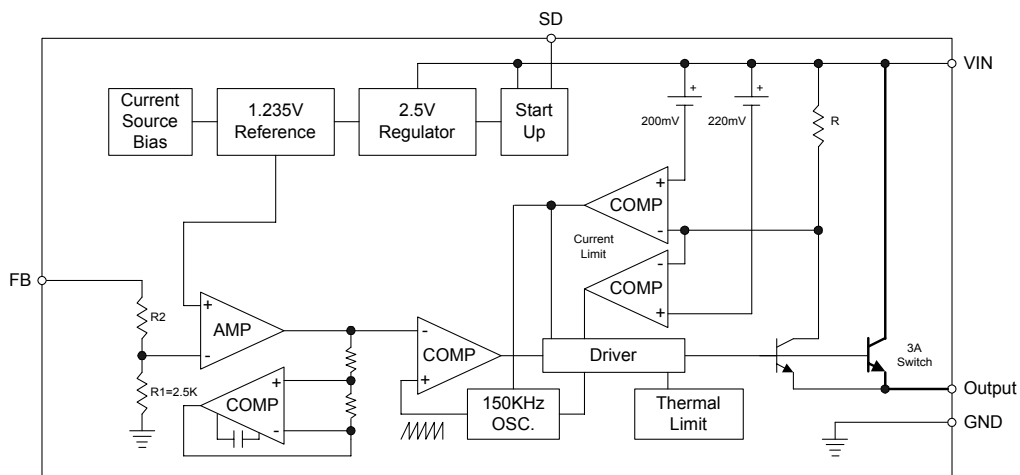
PACKAGE	PIN	SYMBOL	DESCRIPTION
TO-263-5	1	VIN	Regulator Input Pin
	2	VOUT	Regulator Output Pin
	3, 6	GND	Ground Pin
	4	FB	Output Voltage Feed Back Control Pin
	5	SD	ON/OFF Shutdown Pin

PACKAGE	PIN	SYMBOL	DESCRIPTION
TO-220-5	1	VIN	Regulator Input Pin
	2	VOUT	Regulator Output Pin
	3, 6	GND	Ground Pin
	4	FB	Output Voltage Feed Back Control Pin
	5	SD	ON/OFF Shutdown Pin

Ordering Information

DEVICE	DEVICE CODE
RS2596-XX Y Z	<p>XX is nominal output voltage (for example, AD=ADJ, 33 = 3.3V, 50 = 5.0V, 12 = 12V). Y is package designator : U : TO-263-5 E : TO-220-5 Z is Lead Free designator : P: Commercial Standard, Lead (Pb) Free and Phosphorous (P) Free Package G: Green (Halogen Free with Commercial Standard)</p>

Block Diagram



Absolute Maximum Ratings ^(Note1)

Parameter	Symbol	Value	Unit
Supply Voltage	V_{CC}	40	V
On/Off Pin Input Voltage	V_{SD}	-0.3~+25	V
Feedback Pin Voltage	V_{FB}	-0.3~+25	V
Output Voltage to Ground	V_{OUT}	-1	V
Power Dissipation	P_D	Internally Limited	W
Operating Temperature	T_{opr}	0~+70	°C
Storage Temperature	T_{stg}	-65~+150	°C
Operating Junction Temperature Range	T_J	-40~+125	°C
Operating Voltage	V_{OP}	+4.5~+40	V

Electrical Characteristics (Continued)

Specifications with boldface type apply over for full operating temperature range, the other type are for $T_J=25^{\circ}\text{C}$ ^(Note 2)

Part No.	Parameter	Symbol	Conditions	Min.	Typ. (Note3)	Max. (Note4)	Unit
RS2596-3.3V	Output Voltage	V_{OUT}	$5V \leq V_{IN} \leq 40V, 0.2A \leq I_{LOAD} \leq 3A$	3.168 3.135	3.3	3.342 3.465	V
	Efficiency	η	$V_{IN}=12V, I_{LOAD}=3A$	-	72	-	%
RS2596-5.0V	Output Voltage	V_{OUT}	$7V \leq V_{IN} \leq 40V, 0.2A \leq I_{LOAD} \leq 3A$	4.800 4.750	5.0	5.200 5.250	V
	Efficiency	η	$V_{IN}=12V, I_{LOAD}=3A$	-	79	-	%
RS2596-12V	Output Voltage	V_{OUT}	$15V \leq V_{IN} \leq 40V, 0.2A \leq I_{LOAD} \leq 3A$	11.52 11.40	12.0	12.48 12.60	V
	Efficiency	η	$V_{IN}=25V, I_{LOAD}=3A$	-	90	-	%
RS2596-ADJ	Reference Voltage	V_{FB}	$4.5V \leq V_{IN} \leq 40V, 0.2A \leq I_{LOAD} \leq 3A$ V_{OUT} programmed for 3V	1.193	1.230	1.267 1.280	V
	Efficiency	η	$V_{IN}=12V, I_{LOAD}=3A$	-	72	-	%

All Output Voltage Versions Electrical Characteristics

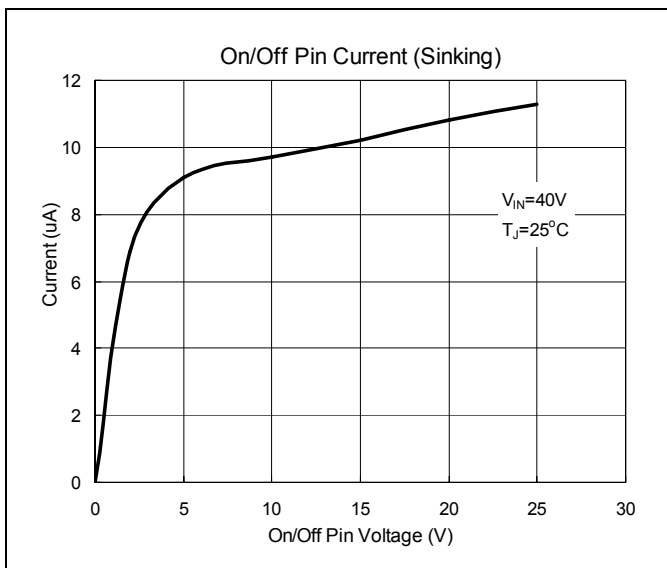
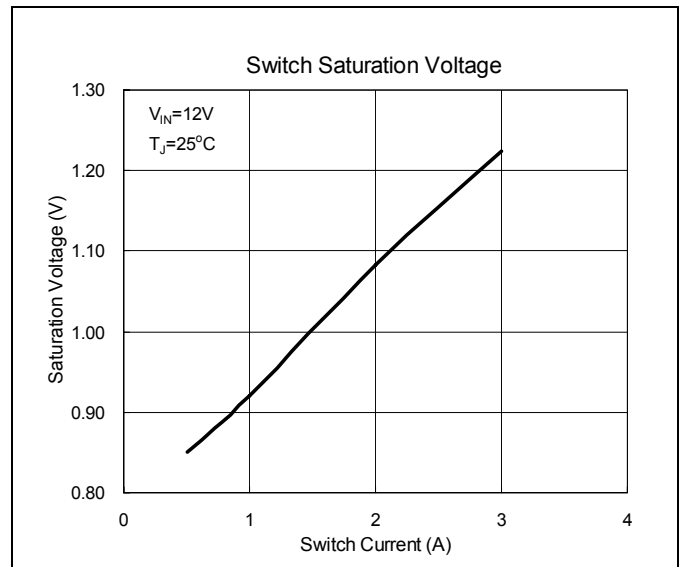
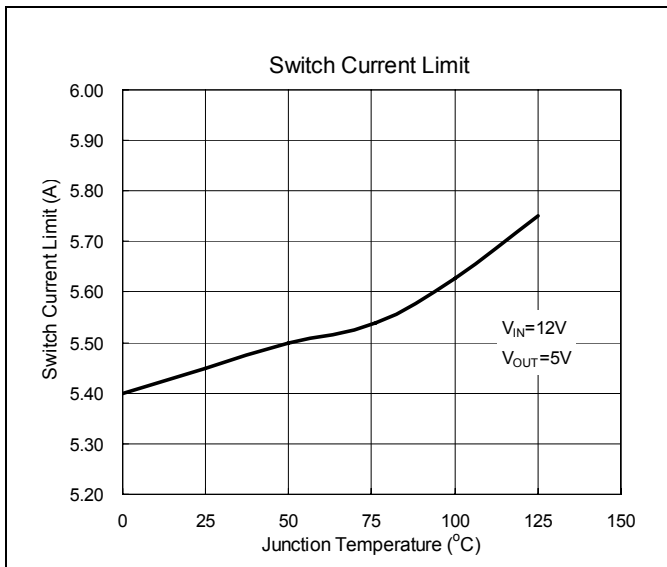
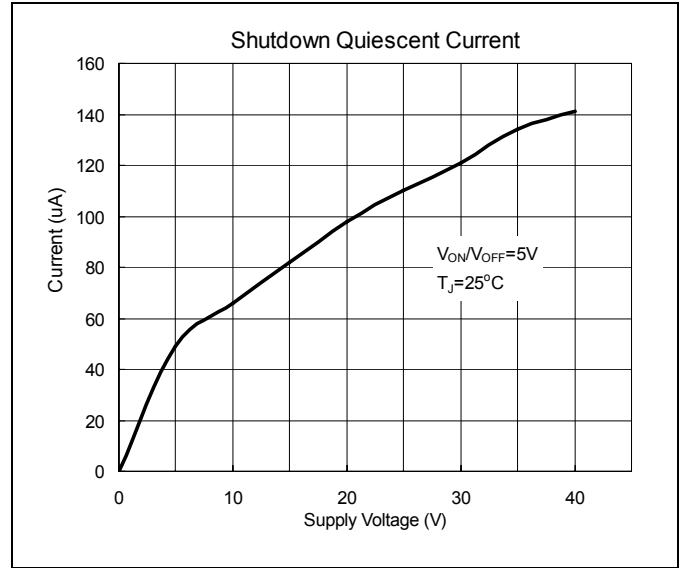
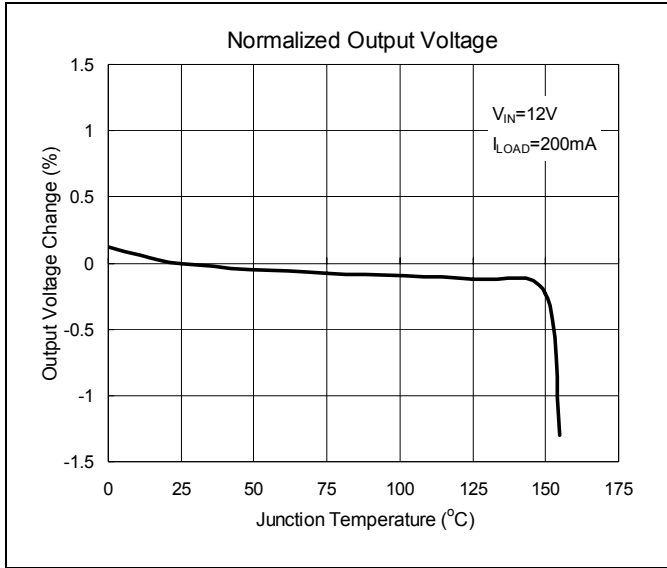
Specifications with **boldface type** apply over for full operating temperature range, the other type are for $T_j=25^{\circ}\text{C}$
 (Unless otherwise specified, $V_{IN}=12\text{V}$ for the 3.3V, 5V, and adjustable version and $V_{IN}=24\text{V}$ for the 12V version, $I_{LOAD}=500\text{mA}$)

Parameter	Symbol	Test Condition	Min.	Typ.	Max.	Unit	
Device Parameters							
Feedback Bias Current	I_b	Adjustable Version Only, $V_{FB}=1.3\text{V}$	-	40	50 100	nA	
Oscillator Frequency	f_o	(Note 5)	127 110	150	173 173	KHz	
Saturation Voltage	V_{SAT}	$I_{OUT}=3\text{A}$ (Note 6,7)	-	1.16	1.4 1.5	V	
Max. Duty Cycle (ON) Min. Duty Cycle (OFF)	DC	(Note 7) (Note 8)	-	100 0	-	%	
Current Limit	I_{CL}	Peak Current (Note 6,7)	3.6	-	5.5 6.9	A	
Output Leakage Current	I_L	Output=0V (Note 6,8)	-	-	50	μA	
Quiescent Current	I_Q	(Note 8)	-	5	30	mA	
Standby Quiescent Current	I_{STBY}	ON/OFF pin=5V (Note 9)	-	85	200 300	μA	
Thermal Resistance	θ_{JC}	TO220-5L	Junction to Case	-	2.5	-	$^{\circ}\text{C}/\text{W}$
		TO263-5L		-	3.5	-	
	θ_{JA} (Note 10)	TO220-5L	Junction to ambient	-	28	-	$^{\circ}\text{C}/\text{W}$
		TO263-5L		-	30	-	
ON/OFF Control							
ON/OFF Pin Logic Input Threshold Voltage	V_{IH}	Low (Regulator ON)	-	1.4	0.6	V	
	V_{IL}	High (Regulator OFF)	2.0		-		
ON/OFF Pin Input Current	I_{IH}	$V_{LOGIC}=2.5\text{V}$ (Regulator OFF)	-	6	15	μA	
	I_{IL}	$V_{LOGIC}=0.5\text{V}$ (Regulator ON)	-	0.02	5		

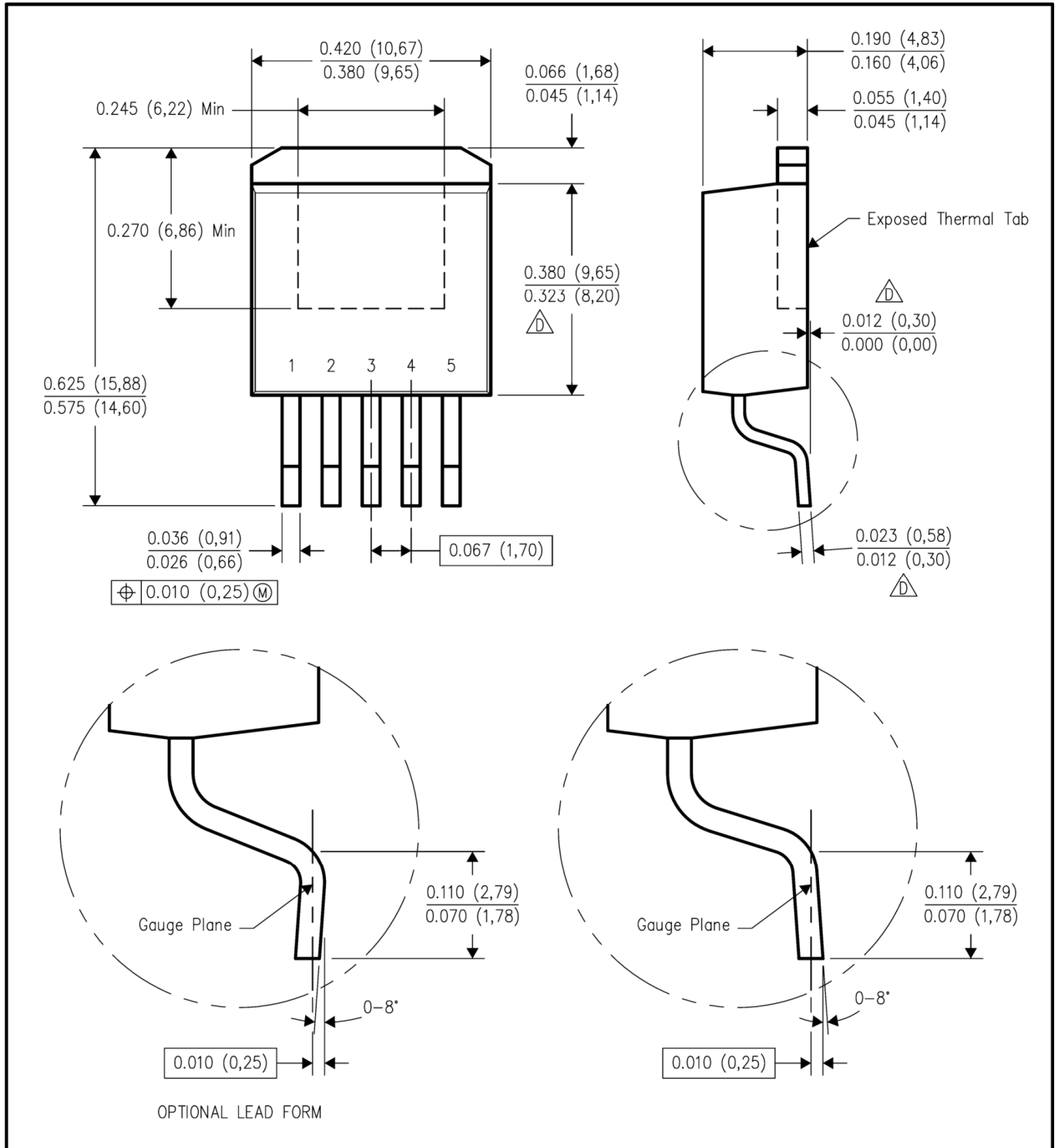
NOTE:

1. Absolute Maximum Ratings indicate limits beyond which damage to the device may occur. Operating Ratings indicate conditions for which the device is intended to be functional, but do not guarantee specific performance limits. For guaranteed specifications and test conditions, see the Electrical Characteristics.
2. External components such as the catch diode, inductor, input and output capacitors, and voltage programming resistors can affect switching regulator system performance.
3. Typical numbers are at 25°C and represent the most likely norm.
4. All limits guaranteed at room temperature (standard type face) and at temperature extremes (bold type face). All room temperature limits are 100% production tested. All limits at temperature extremes are guaranteed via correlation using standard Statistical Quality Control (SQC) methods. All limits are used to calculate Average Outgoing Quality Level (AOQL).
5. The switching frequency is reduced when the second stage current limit is activated.
6. No diode, inductor or capacitor connected to output pin.
7. Feedback pin removed from output and connected to 0V to force the output transistor switch ON.
8. Feedback pin removed from output and connected to 12V for the 3.3V, 5V, ADJ. version, and 15V for the 12V version, to force the output transistor switch OFF.
9. $V_{IN}=40\text{V}$.
10. Junction to ambient thermal resistance. (With copper area of approximately 3in^2)

Characteristics Curve



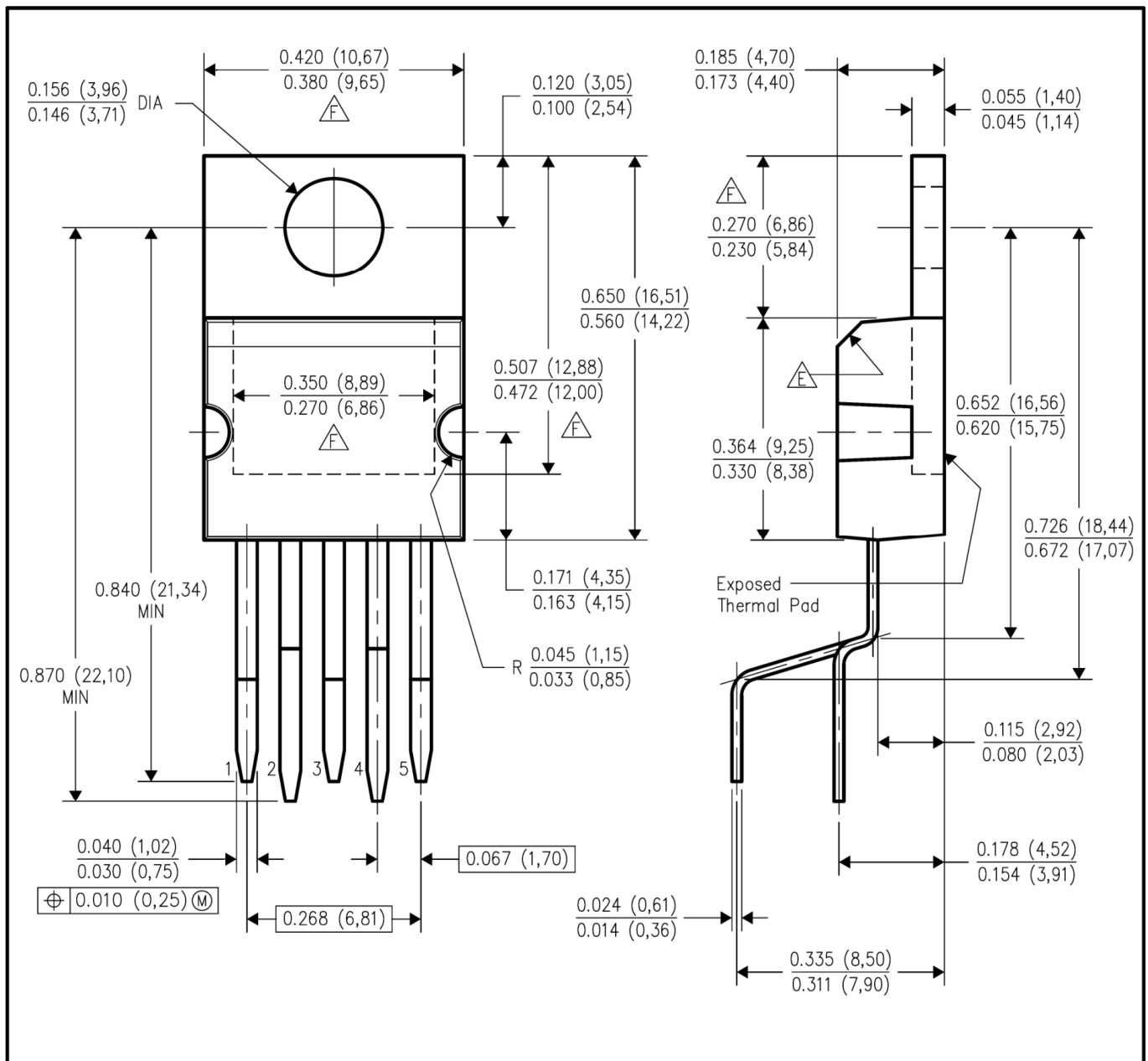
TO-263-5 Dimension



NOTES:

- A. All linear dimensions are in inches (millimeters).
- B. This drawing is subject to change without notice.
- C. Body dimensions do not include mold flash or protrusion. Mold flash or protrusion not to exceed 0.005 (0.13) per side.
- D. Falls within JEDEC TO-263 variation BA. Except minimum lead thickness, maximum seating height, and minimum body length.

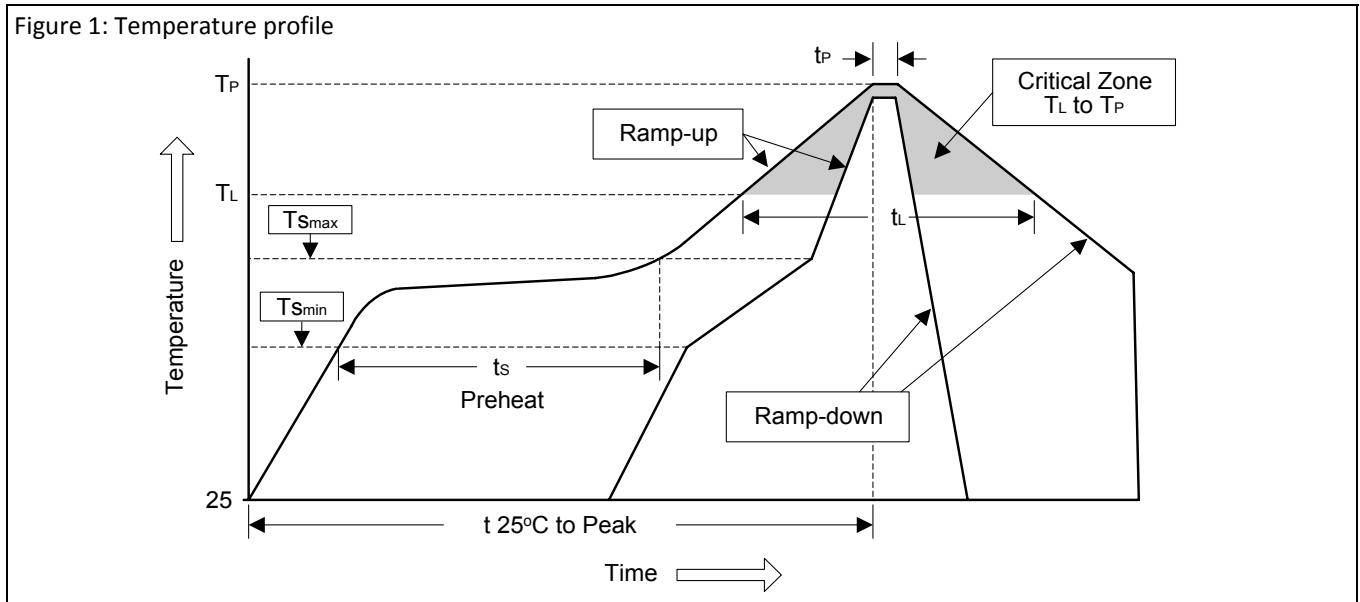
TO-220-5 Dimension



Soldering Methods for Orister's Products

1. Storage environment: Temperature=10°C~35°C Humidity=65%±15%
2. Reflow soldering of surface-mount devices

Figure 1: Temperature profile



Profile Feature	Sn-Pb Eutectic Assembly	Pb-Free Assembly
Average ramp-up rate (T_L to T_P)	<3°C/sec	<3°C/sec
Preheat		
- Temperature Min (T_{Smin})	100°C	150°C
- Temperature Max (T_{Smax})	150°C	200°C
- Time (min to max) (t_s)	60~120 sec	60~180 sec
T_{Smax} to T_L		
- Ramp-up Rate	<3°C/sec	<3°C/sec
Time maintained above:		
- Temperature (T_L)	183°C	217°C
- Time (t_L)	60~150 sec	60~150 sec
Peak Temperature (T_P)	240°C +0/-5°C	260°C +0/-5°C
Time within 5°C of actual Peak Temperature (t_P)	10~30 sec	20~40 sec
Ramp-down Rate	<6°C/sec	<6°C/sec
Time 25°C to Peak Temperature	<6 minutes	<8 minutes

3. Flow (wave) soldering (solder dipping)

Products	Peak temperature	Dipping time
Pb devices.	245°C ±5°C	5sec ±1sec
Pb-Free devices.	260°C +0/-5°C	5sec ±1sec

Important Notice:

© Orister Corporation

Orister cannot assume responsibility for use of any circuitry other than circuitry entirely embodied in an Orister product. No circuit patent licenses, copyrights, mask work rights, or other intellectual property rights are implied.

Orister reserves the right to make changes to their products or specifications or to discontinue any product or service without notice. Except as provided in Orister's terms and conditions of sale, Orister assumes no liability whatsoever, and Orister disclaims any express or implied warranty relating to the sale and/or use of Orister products including liability or warranties relating to fitness for a particular purpose, merchantability, or infringement of any patent, copyright or other intellectual property right. In order to minimize risks associated with the customer's applications, adequate design and operating safeguards must be provided by the customer to minimize inherent or procedural hazards. Testing and other quality control techniques are utilized to the extent Orister deems necessary to support this warranty. Specific testing of all parameters of each device is not necessarily performed.

Orister and the Orister logo are trademarks of Orister Corporation. All other brand and product names appearing in this document are registered trademarks or trademarks of their respective holders.