

## HIGH POWER 1000 WATT BIDIRECTIONAL COUPLERS

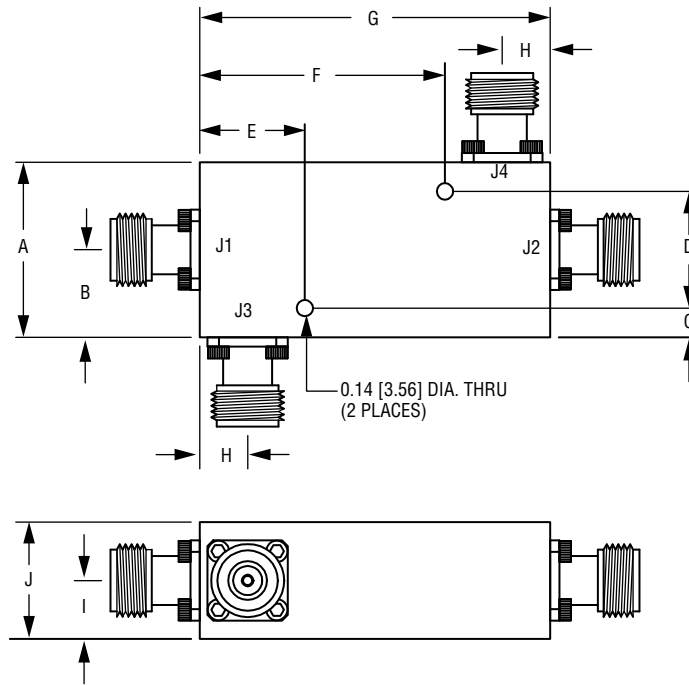
FREQ. (GHz)	MODEL NUMBER	COUPLING (dB)	FREQ. FLATNESS (±dB)	INSERTION LOSS (dB, Max.)	DIRECTIVITY (dB, Typ.)	VSWR (Max.)		POWER (Watts, Max.)			OUTLINE
						PRI. LINE	SEC. LINE	AVG. FORWARD	AVG. REVERSE	PEAK (kW)	
0.02–0.1	CD2-200-101-30NK	30 ±0.5	0.75	0.3	25	1.15:1	Note 1	1000	1000	10	2
	CD2-200-101-40NK	40 ±0.5	0.75	0.2	25	1.15:1	Note 1	1000	1000	10	2
0.1–0.5	CD2-101-501-30NK	30 ±0.5	0.6	0.4	25	1.15:1	Note 1	1000	1000	10	1
	CD2-101-501-40NK	40 ±0.5	0.6	0.3	25	1.15:1	Note 1	1000	1000	10	1
0.225–0.4	CD2-225-401-30NK	30 ±0.5	0.25	0.25	25	1.15:1	1.2:1	1000	1000	10	1
	CD2-225-401-40NK	40 ±0.5	0.25	0.2	25	1.15:1	1.2:1	1000	1000	10	1
0.4–1	CD2-401-102-30NK	30 ±0.5	0.3	0.2	25	1.15:1	1.2:1	1000	1000	10	2
	CD2-401-102-40NK	40 ±0.5	0.3	0.2	25	1.15:1	1.2:1	1000	1000	10	2
0.8–1.6	CD2-801-162-30NK	30 ±0.5	0.3	0.2	24	1.15:1	1.2:1	1000	1000	10	2
	CD2-801-162-40NK	40 ±0.5	0.3	0.2	24	1.15:1	1.2:1	1000	1000	10	2
1–2	CD2-102-202-30NK	30 ±0.5	0.75	0.2	24	1.15:1	1.2:1	1000	1000	10	1
	CD2-102-202-40NK	40 ±0.5	0.75	0.2	25	1.15:1	1.2:1	1000	1000	10	1

See outline drawings on pages 40 and 41.

**NOTES:**

1. Coupled ports on these models use a compensation network which has a poor VSWR. These units are matched and aligned for use in a 50 ohm impedance system.
2. Standard connectors are type "N" female on all ports. Other connectors are available upon request. (Consult factory for power rating)
3. High power terminations are internal to all units except the 0.2 – 5.2 GHz models.

# HIGH POWER 1000 WATT BIDIRECTIONAL COUPLER OUTLINE DRAWING

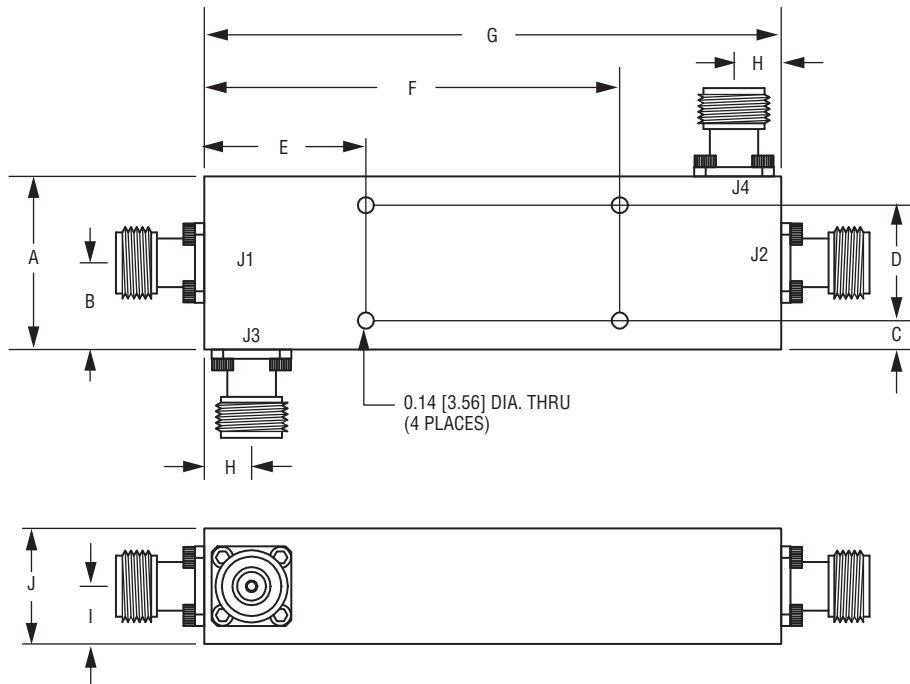


MODEL NUMBER	DIMENSION									
	A	B	C	D	E	F	G	H	I	J
<b>OUTLINE 1</b>										
CD2-101-501-30NK	1.80	0.90	0.45	0.90	1.00	2.50	3.50	0.58	0.50	1.05
CD2-101-501-40NK	[45.72]	[22.86]	[11.43]	[22.86]	[25.40]	[63.50]	[88.90]	[14.73]	[12.70]	[26.67]
CD2-225-401-30NK	1.375	0.688	0.25	0.875	1.00	2.50	3.50	0.65	0.56	1.12
CD2-225-401-40NK	[34.925]	[17.475]	[6.35]	[22.225]	[25.40]	[63.50]	[88.90]	[16.51]	[14.22]	[28.45]
CD2-102-202-30NK	1.80	0.90	0.30	1.20	1.00	2.50	3.50	0.58	0.65	1.30
CD2-102-202-40NK	[45.72]	[22.86]	[7.62]	[30.48]	[25.40]	[63.50]	[88.90]	[14.73]	[16.51]	[33.02]

NOTE: DIMENSIONS SHOWN IN BRACKETS [ ] ARE IN MILLIMETERS.



# HIGH POWER 1000 WATT BIDIRECTIONAL COUPLER OUTLINE DRAWING



MODEL NUMBER	DIMENSION									
	A	B	C	D	E	F	G	H	I	J
<b>OUTLINE 2</b>										
CD2-200-101-30NK	1.375	0.688	0.25	0.875	1.50	6.00	7.50	0.55	0.575	1.16
CD2-200-101-40NK	[34.925]	[17.475]	[6.35]	[22.225]	[38.10]	[152.40]	[190.50]	[13.97]	[14.605]	[29.46]
CD2-401-102-30NK	2.50	1.28	0.25	1.89	2.10	5.10	7.20	0.51	0.50	1.10
CD2-401-102-40NK	[63.50]	[32.51]	[6.35]	[48.01]	[53.34]	[129.54]	[182.88]	[12.95]	[12.70]	[27.94]
CD2-801-162-30NK	1.60	0.805	0.40	0.80	1.50	4.00	5.50	0.67	0.60	1.30
CD2-801-162-40NK	[40.64]	[20.447]	[10.16]	[20.32]	[38.10]	[101.60]	[139.70]	[17.02]	[15.24]	[33.02]

NOTE: DIMENSIONS SHOWN IN BRACKETS [ ] ARE IN MILLIMETERS.