

Coaxial Frequency Mixer

ZX05-C60+ ZX05-C60

Level 7 (LO Power +7 dBm) 1600 to 6000 MHz



CASE STYLE: FL905

Connectors	Model	Price	Qty.
SMA	ZX05-C60-S(+)	\$37.95 ea.	(1-24)

+ RoHS compliant in accordance with EU Directive (2002/95/EC)

The +Suffix identifies RoHS Compliance. See our web site for RoHS Compliance methodologies and qualifications.

Maximum Ratings

Operating Temperature	-40°C to 85°C
Storage Temperature	-55°C to 100°C
RF Power	50mW
IF Current	40mA

Coaxial Connections

LO	1
RF	2
IF	3

Features

- rugged construction
- small size
- low conversion loss
- high L-R isolation
- protected by US Patents 6,790,049 & 7,027,795

Applications

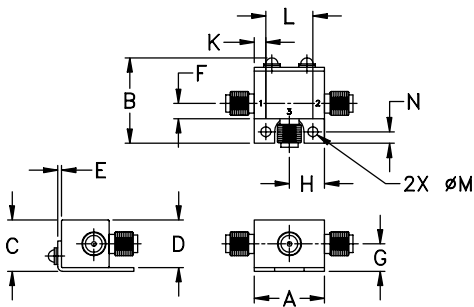
- cellular
- PCS
- instrumentation
- satellite communication

Electrical Specifications (T_{AMB}=25°C)

FREQUENCY (MHz)	CONVERSION LOSS (dB)	LO-RF ISOLATION (dB)		LO-IF ISOLATION (dB)		IP3 at center band (dBm)			
		Typ.	Min.	Typ.	Min.				
LO/RF	IF								
$f_c - f_u$	\bar{X} σ Max.								
1600-6000	DC-2000								
1600-4400	DC-2000	6.3	0.2	8.3	32	20	17	—	9
4400-6000	DC-2000	6.2	0.3	8.5	23	17	18	—	8

1 dB COMP.: +1 dBm typ.
Conversion loss specification at 30 MHz IF

Outline Drawing



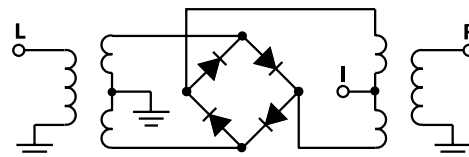
Outline Dimensions (inch/mm)

A	B	C	D	E	F	G	
.74	.90	.54	.50	.04	.16	.29	
18.80	22.86	13.72	12.70	1.02	4.06	7.37	
H	J	K	L	M	N	wt	
.37	--	.122	.496	.106	.122	grams	
9.40	--	3.10	12.60	2.69	3.10	20.0	

Typical Performance Data

Frequency (MHz)		Conversion Loss (dB)	Isolation L-R (dB)	Isolation L-I (dB)	VSWR RF Port (:1)	VSWR LO Port (:1)
RF	LO	LO +7dBm	LO +7dBm	LO +7dBm	LO +7dBm	LO +7dBm
1600.10	1630.11	6.47	32.80	18.08	2.24	4.87
1825.69	1855.70	5.69	40.54	20.58	2.44	2.90
2051.27	2081.28	5.51	34.62	20.26	2.50	2.41
2276.85	2306.86	5.25	31.37	19.11	2.20	2.03
2502.44	2532.45	5.28	31.45	17.13	1.94	1.84
2728.02	2758.03	5.49	33.47	17.11	1.91	2.05
2953.61	2983.62	6.00	33.21	17.20	2.93	2.31
3179.19	3209.20	6.36	33.41	16.92	2.73	2.49
3404.78	3434.79	6.76	35.02	16.07	2.69	2.72
3630.36	3660.37	6.83	34.77	14.78	2.89	3.16
3855.95	3885.96	6.87	34.23	14.48	2.74	3.95
4081.53	4111.54	7.12	33.97	15.29	2.74	3.79
4307.12	4337.13	6.75	35.18	17.32	2.85	4.45
4532.70	4562.71	6.18	33.14	18.24	2.71	4.84
4871.08	4901.09	6.24	30.72	20.71	2.92	2.16
5096.66	5126.67	5.53	25.15	23.32	1.73	1.14
5322.25	5352.26	5.72	22.88	25.07	2.00	1.54
5547.83	5577.84	5.40	22.00	22.46	1.69	2.03
5773.42	5803.43	5.85	21.83	14.93	1.43	3.10
5999.00	5968.99	6.36	21.97	13.20	1.90	6.57

Electrical Schematic



Mini-Circuits®
ISO 9001 ISO 14001 CERTIFIED

ALL NEW
minicircuits.com

P.O. Box 350166, Brooklyn, New York 11235-0003 (718) 934-4500 Fax (718) 332-4661 For detailed performance specs & shopping online see Mini-Circuits web site



The Design Engineers Search Engine Provides ACTUAL Data Instantly From MINI-CIRCUITS At: www.minicircuits.com

RF/IF MICROWAVE COMPONENTS

REV. C
M98898
ZX05-C60
RVN/TD/CP/AM
070117
Page 1 of 2

Performance Charts

