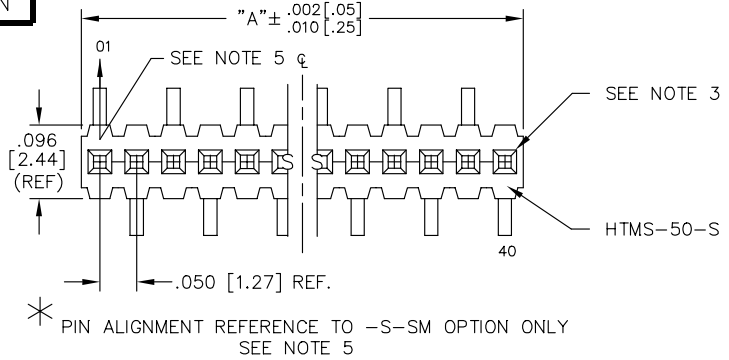


REV. N

DIMENSIONS ARE IN INCHES		UNLESS OTHERWISE NOTED	TOLERANCES ARE:	TITLE:	DWG NO:
ONE PLACE DECIMALS ± .1 [3]	THREE PLACE DECIMALS ± .005 [1.13]		ANGLES ± 2°	HI-TEMP TERMINAL MICRO-STRIP(SINGLE ROW)	HTMS-1XX-XX-X-S-XX-SM-X
TWO PLACE DECIMALS ± .01 [3]	FOUR PLACE DECIMALS ± .0020 [0.051]				SHEET 1 OF 1



HTMS-1XX-XX-X-S-XX-SM-X

OPTION
-P: PICK & PLACE PAD (USE PPP-11)

OPTION
-SM: SURFACE MOUNT

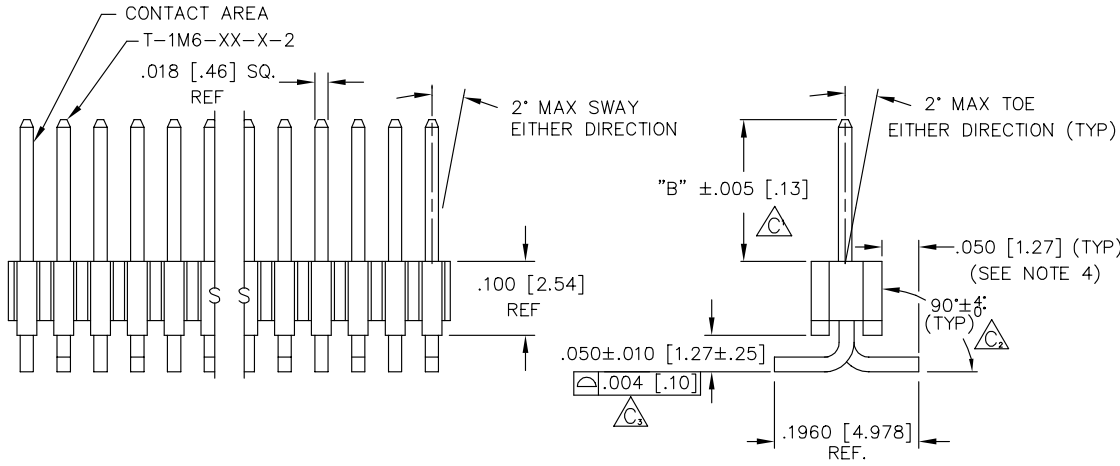
OPTION
-POLARIZING SPECIFICATION
XX INDICATES POS. TO BE OMITTED

BODY SPECIFICATION
-S: SINGLE (USE HTMS-50-S)

PLATING SPECIFICATION
-G: GOLD (USE T-1M6-XX-G-2)
-T: TIN (USE T-1M6-XX-T-2)
-S: SELECTIVE (USE T-1M6-XX-S-2)
-F: FLASH SELECTIVE GOLD (USE T-1M6-XX-F-2) (LEAD STYLE SPEC -01,-51, & 52 ONLY)

LEAD STYLE SPEC
SEE TABLE 1

BODY LENGTH SPEC
EXPRESSED IN # POS PER ROW
(-02 THRU -40)
"A" = 'XX' x .050 [1.27]

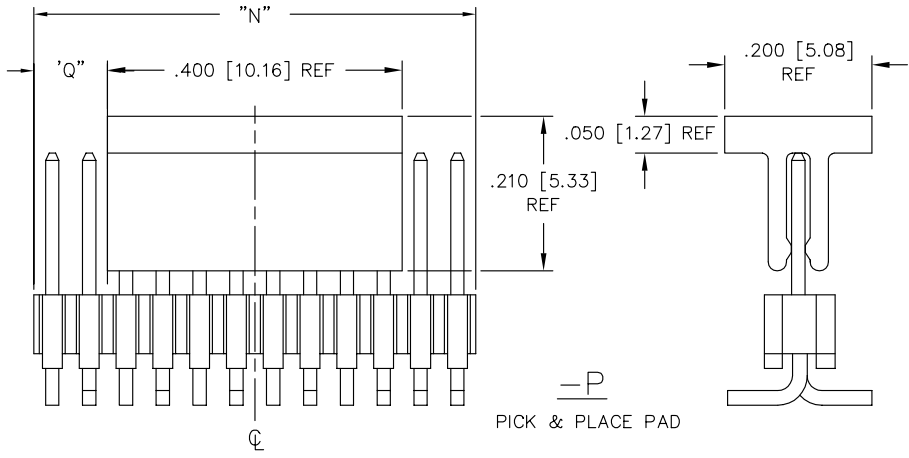


- NOTES:
1. MAX ALLOWABLE BOW: .005 [0.13] INCH/INCH.
 2. TERMINAL PUSHOUT FORCE: 2 lbs. MIN.
 3. MAX PIN ROTATION IN BODY: 2°.
 4. SHEAR TAIL TO DIMENSION GIVEN.
 5. FIRST POSITION TO POINT UPWARD ON TOP VIEW AS SHOWN.
 6. Δ REPRESENTS A CRITICAL DIMENSION FOR STATISTICAL PROCESS CONTROL USE.
 7. TUBE POSITIONS -05 THRU -50 ONLY FOR THIS LEAD STYLE.
 8. .003 [0.08] MAX BURR
 9. CUT FLASH: .010 [0.25] MAX

AVAILABLE ON 9 - 40 POSITION ONLY

"N" = USE MEASURED DIMENSION

"Q" = $\{("N" - .400 [10.16]) / 2\} \pm .020 [0.51]$



LEAD STYLE	PACKAGING TUBE (SEE NOTE 8)	PLUG
-01,-02,-03, -51,-52,-53,-54	PT-1-24-02-29	TP-24
-55,-56,-57	PT-1-24-10-29	TP-24
-01-P	PT-1-24-05-29	TP-03

LEAD	TERMINAL SPEC.	'B'
-01	T-1M6-13-X-2	.230 [5.84]
-02	T-1M6-04-X-2	.100 [2.54]
-03	T-1M6-04-X-2	.125 [3.18]
-21	N/A	.230 [5.84]
-51	T-1M6-13-X-2	.190 [4.83]
-52	T-1M6-13-X-2	.205 [5.21]
-53	T-1M6-05-X-2	.285 [7.24]
-54	T-1M6-15-X-2	.335 [8.51]
-55	T-1M6-16-X-2	.390 [9.91]
-56	T-1M6-16-X-2	.405 [10.29]
-57	T-1M6-16-X-2	.430 [10.92]
-58	N/A	.485 [12.32]
-59	N/A	.535 [13.59]
-60	N/A	.605 [15.37]

Do not scale from this print

PLOT SCALE 1=.1333

MISC\MKTG
HTMSS-MK

samtec

520 PARK EAST BLVD. NEW ALBANY, INDIANA 47150
PHONE (812) 944-6733 P.O. BOX 1147
CODE 55322

MADE BY: GREG REIDINGER 2-12-92
CHECKED BY: ECKERT

ENG APPROVAL
P/AE

HTMS-1XX-XX-X-S-XX-SM-X
SHEET 1 OF 1

PROPRIETARY NOTE
THIS DOCUMENT CONTAINS INFORMATION CONFIDENTIAL AND PROPRIETARY TO SAMTEC INC. AND SHALL NOT BE REPRODUCED OR TRANSFERRED TO OTHER DOCUMENTS OR DISCLOSED TO OTHERS OR USED FOR ANY PURPOSE OTHER THAN THAT FOR WHICH IT WAS OBTAINED WITHOUT THE EXPRESSED WRITTEN CONSENT OF SAMTEC INC.