

Power Line Filters DC - Higher Current

12-PMF & 12 PMB DC Series

Features

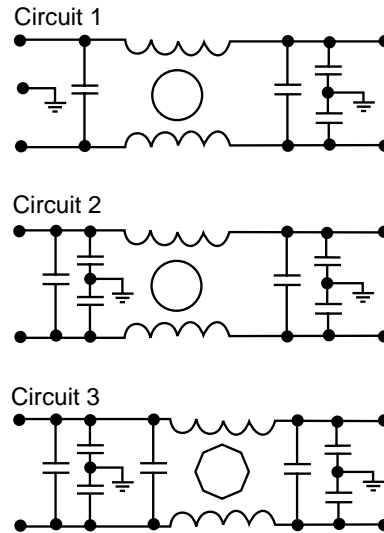
- Space-saving, compact designs
- Suitable for products that must conform to FCC regulations
- Excellent attenuation for high voltage impulse
- Metal case provides effective shielding
- Excellent filtering characteristics for both normal mode and common mode
- Epoxy molded for internal component reliability
- Structure provides effective shielding for noise generated externally and internally
- Designed to be in accordance with VDE 0565 Part 3
- Operating temperature: -40°C to +85°C

Applications

- Digital equipment
- Computers and peripherals
- Measuring instruments
- Equipment requiring very high impulse attenuation
- Factory automation equipment
- Industrial equipment such as UPS, inverters and converters
- Telecommunications equipment



Circuit Diagram



Specifications

Model	Rated Voltage (@ 50/60Hz)	Rated Current	Circuit Diagram	Figure	Temperature Rise (Max.)		
12-PMF-006-DC-C	48/250 VDC	6A	1	A	30°C		
12-PMF-010-DC-C		10A					
12-PMF-015-DC-C		15A					
12-PMF-020-DC-C		20A					
12-PMF-025-DC-D		25A				1	B
12-PMB-025-DC-F							
12-PMB-030-DC-F		30A				1	C
12-PMB-035-DC-F		35A					
12-PMB-040-DC-F		40A					
12-PMB-040-DC-B		50A				1	D
12-PMB-050-DC-B		60A					
12-PMB-060-DC-B		80A	2	E			
12-PMB-080-DC-G							
12-PMB-080-DC-C		100A	3	F			
12-PMB-100-DC-C							
12-PMB-120-DC-C							
12-PMB-140-DC-C		140A	2	G			
12-PMB-180-DC-E		180A					
12-PMB-200-DC-E		200A					
12-PMB-260-DC-E		260A	2				

Note: Test voltage: 1500VAC one minute, line to earth
Insulation resistance: 300 Mohm min. at 500VDC
Voltage drop: 1V max.

Discharge time: 0.4 sec. max.
Weight: 8.82 ounces (250 grams)

Power Line Filters DC - Higher Current

12-PMF & 12-PMB DC Series

Figure B

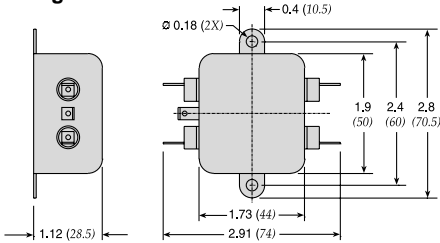


Figure C

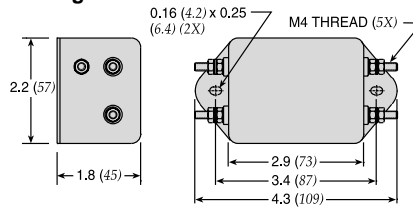


Figure A

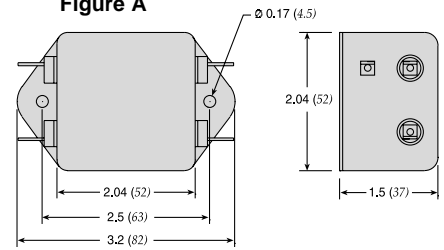


Figure D

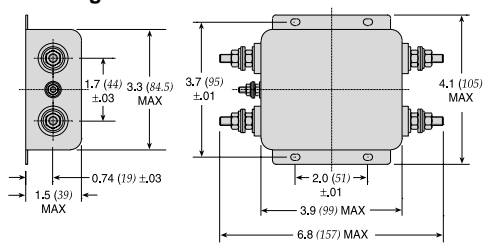


Figure E

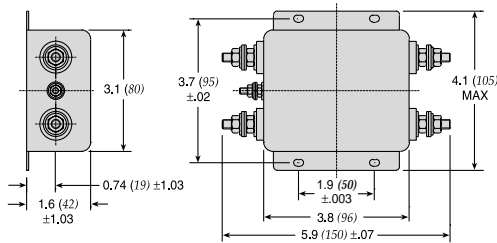


Figure F

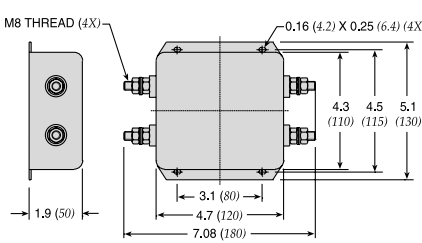
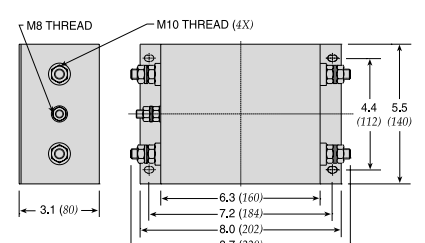
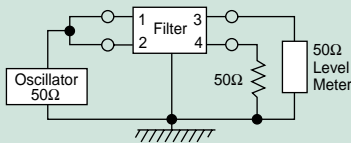


Figure G

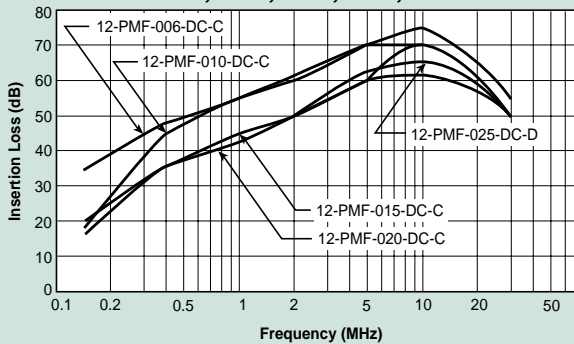


Dimensions in inches (mm)

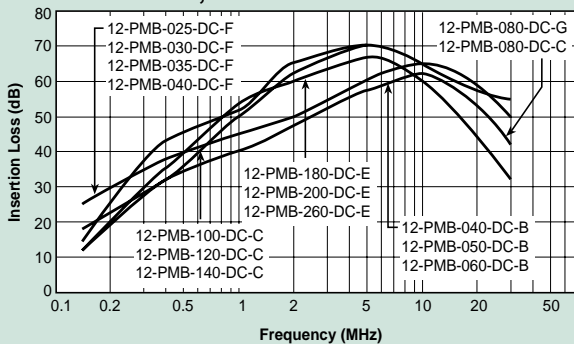
Common Mode



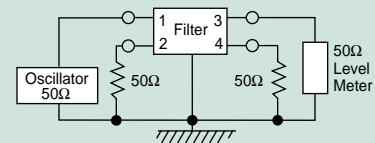
12-PMF-006;-010;-015;-020;-025



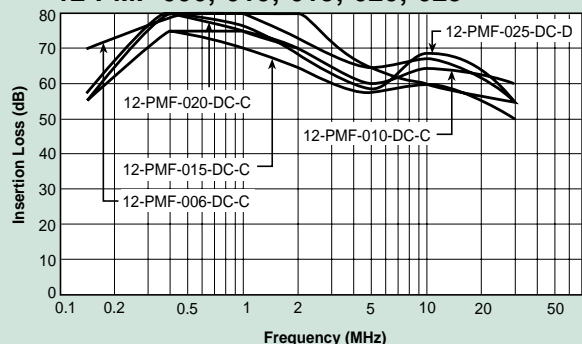
12-PMB-025; thru -260



Normal Mode



12-PMF-006;-010;-015;-020;-025



12-PMB-025; thru -260

