

HD-20 Filtered Right Angle Stacked Connectors

Plug over Plug

Material and Finish:

Shell—Steel, tin plated

Housing—94V-0 rated thermoplastic, black

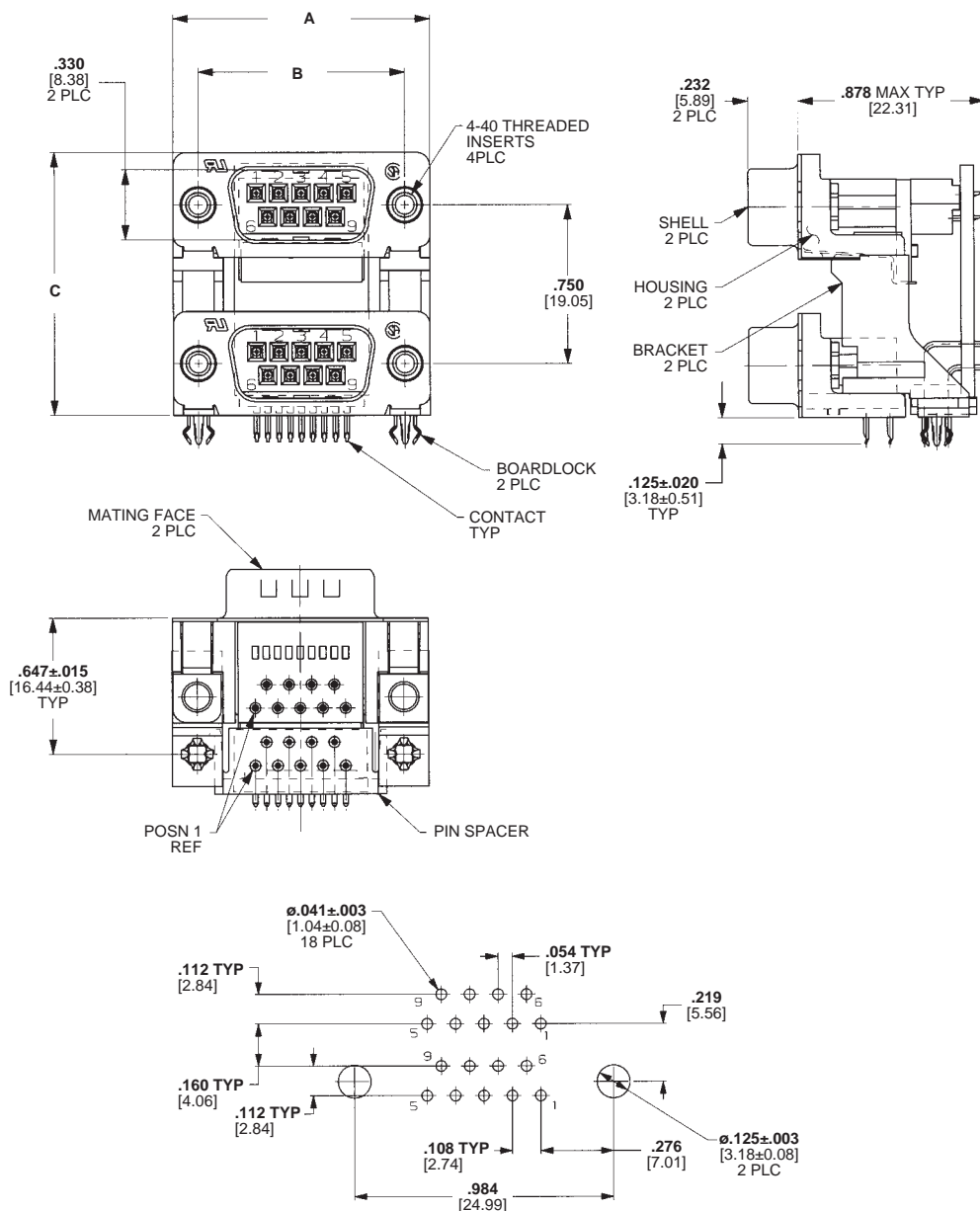
Threaded Inserts—Brass, unplated

Female Screwlocks—Zinc

Socket Contacts (Posted)—

Phosphor bronze, plated as follows:
.000030 [0.00076] gold on mating end,
tin-lead on termination end, with entire
contact .000050 [0.00127] (min.)
nickel underplated

9-Position HD-20 Plug over 9-Position HD-20 Plug



Contact Arrangement and PC Board Mounting Specifications

Shell size	No. of Positions	Dimensions			Capacitance pF	Part Number
		A	B	C		
1	9/9	1.222 [31.40]	.984 [24.99]	1.244 [31.60]	1500	93710-1
		1.222 [31.40]	.984 [24.99]	1.244 [31.60]	820	93710-2
		1.222 [31.40]	.984 [24.99]	1.244 [31.60]	470	93710-3
		1.222 [31.40]	.984 [24.99]	1.244 [31.60]	220	93710-4
		1.222 [31.40]	.984 [24.99]	1.244 [31.60]	100	93710-5

Notes: Unfiltered Part Number 750593-4