

Higher performance modules

A range of chassis mount IEC 60320 inlet power entry modules providing a high level of suppression with a low leakage current. Typical applications include business, consumer and medical equipment, VDU's, computers and many general purpose applications.

- Current ratings from 1A to 3A
- High performance to size ratio
- Medical versions available
- Earth line choke options available

Mechanical Specifications

Manufacture: metal case with built-in power line connector according to IEC 60320 & EN 60320. Internal components sealed with self-extinguishing resin.

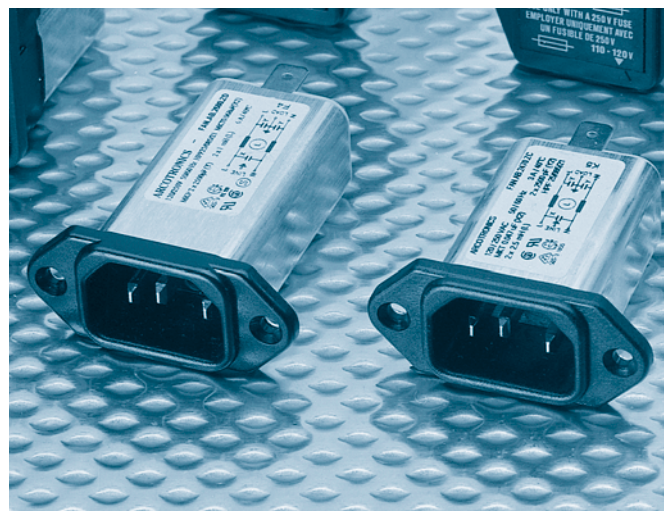
Connections: IEC 60320 - Standard plug (INPUT);
faston 2.8 x 0.5mm or 6.3 x 0.8mm (OUTPUT);
ground terminal connected to case.

Filter Range

Code	I _R (A)	L (mH)	CX ₁ (μF)	CX ₂ (μF)	Cy (pF)	I _L (mA)	R (MΩ)	H (mm)
F.AN.- - .3100.ZD	3	2x6min		0.1	2x 150	2x0.014	2.2	50
▲F.AN.- - .3136.ZA	1	2x10	0.068	0.068	2x2500	2x0.23		50
▲F.AN.- - .3136.ZB	3	2x2.5	0.068	0.068	2x2500	2x0.23		50
F.AN.- - .3136.ZC	2.5	2x6	0.068	0.068	2x3200	2x0.29	2.2	50
F.AN.- - .3136.ZD	1	2x10	0.068	0.068	2x2500	2x0.23	1	50

A = Faston 2.8 x 0.5 mm
B = Faston 6.3 x 0.8 mm
A = Standard Version
M = Medical Version

▲ Available with earth line chokes (without approvals)



Electrical Specifications

Rated voltage (V_R): max 250V, 50/60Hz

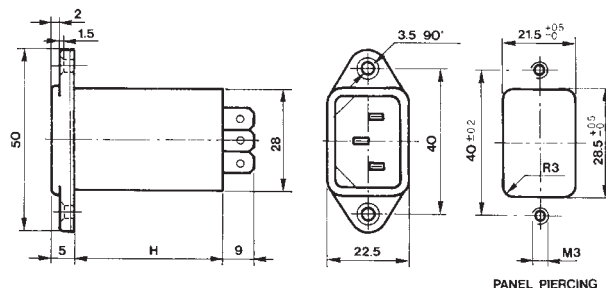
Rated current (I_R): referred to room temperature = 40°C

Leakage current (I_L): at 220V, 50Hz, max value

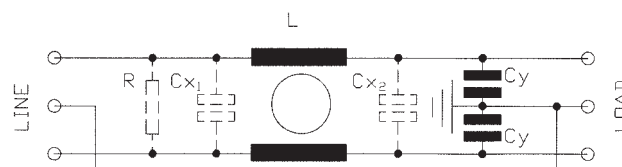
Voltage test (2s.): line to ground 3000Vdc or 1800Vac
line to line 1700Vdc

Climatic category: HPF (25/085/21):
Temperature range: -25°C to +85°C

Dimensions (mm) and connections



Circuit diagram



Insertion loss (typical): — Asymmetrical (line to ground) - - - Symmetrical (line to line)

